

Rough and Tumble To Hold Harvest Celebration

KINZERS — Sudden blasts of a steam whistle, an occasional "pop" of a hit-'n-miss early gas engine, the tantalizing smell of apples being pressed into cider and much more awaits visitors who join Rough and Tumble Museum on October 10 and 11 for its "Time of Harvest."

Both days, starting at 10 a.m., will be filled with activities. There will be apple cider in the making,

shingle cutting, apple butter boiling and potato chips made in an open kettle, all powered with steam. The steam-powered saw mill will be in operation — fascinating to watch and delightful to smell — as well as a stone crusher and two operating steam-powered railroads.

Chet and Jean Ramsey will be demonstrating their extensive collection of antique music boxes,

and Eugene Klinger is willing to explain the many various features of his collection of early American woodworking tools.

Other featured exhibits include woodcutting as it was done before the invention of the chain saw, and the olden-days way of harvesting corn. The ladies will appreciate the "Maytag Man" more than ever after seeing a demonstration of how grandma had to do her washing.

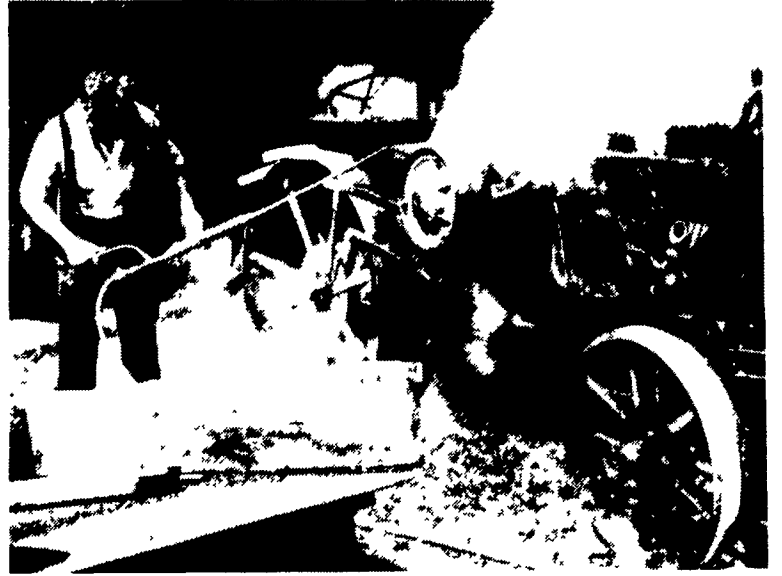
Special tours will be offered during the day through the stationary steam engine building. Take the time to look and listen to these "gentle giants." Their size and jobs were impressive, yet running they make only a gentle swishing sound. Also impressive was the fact these machines had to be tended 24 hours a day when they were in use.

There will be steam and air horns gathered by enthusiasts in operation during the "Time of Harvest." You can learn a little about how and where they were used.

By midday visitors can walk or take an oxen-powered hay ride to the lunch stands where they are sure to find something to delight the palate.

Rough and Tumble Museum is located midway between Lancaster and Coatesville on US Route

30 at Kinzers, Pa. There is plenty of free parking and admission to the grounds is \$2 for adults and \$1 for children between six and twelve. For further information, please call R & T at 442-4249.



Steam powered technology from days of yore will be featured at the "Time of Harvest" celebration scheduled at the Rough and Tumble Museum next month.

PDA Offers Seed Guidelines

HARRISBURG — Determining the quality of seed before planting is a vital step in crop production, the state Department of Agriculture reminds Pennsylvania farmers.

"High quality seed contributes to good production and profits," said Richard Deppen, chief of the Seed Division in the Bureau of Plant Industry. "Inferior quality seed can reduce yield and introduce troublesome weeds that may persist in the field for years," he said.

If the farmer has produced and stored the seed, he should submit a representative sample to a laboratory to be analyzed for pure seed, other crop seed, inert matter, germination and noxious or other harmful weed seeds, Deppen said.

When purchasing seeds from a

neighbor or through a newspaper or magazine advertisement, the farmer should ask to see a copy of a seed laboratory report. Seed offered for sale must be properly labeled under the Pennsylvania Seed Act.

"The best assurance for higher yields and more profit is to start with quality seed," Deppen stressed. "Use seed that is certified, is a recommended variety and is treated for protection against disease."

The department's seed laboratory will furnish a complete analysis for quality and germination for a \$9.50 fee. For more information, farmers may contact the Pennsylvania State Seed Laboratory, Bureau of Plant Industry, 2301 N. Cameron St., Harrisburg 17110, or call 717-787-4843.

KEN CLUGSTON
665-6775

VERNON SEIBEL
665-2782

CRAFT-BILT CONSTRUCTION INC.

FARM-HOME BUILDING

R.D.#2 MANHEIM, PA.

PH: 665-4372

BUILDING & REMODELING FOR—

DAIRY
SWINE
BEEF

RESIDENTAL
POLE BUILDINGS
STORAGE

FRANK A. FILLIPPO, INC.

**- WANTED -
DISABLED & CRIPPLED
COWS, BULLS & STEERS**

Competitive Prices Paid

**Slaughtered under
government inspection**

**Call: Frank Fillippo -
Residence - 215-666-0725
Elam Ginder - 717-367-3824
C.L. King - 717-786-7229**

Don't Go In Circles...Take The Road To Success

**Bou-Matic®
MODEL BM 1500
Feeding Computer**

**Dart-Kool
BULK MILK COOLERS**

**Bou-Matic® FLO-STAR®
Milking Claw**

Let The FLO-STAR® Claw Show
You How To Move Your Milk!

**Bou-Matic®
SERIES 2000V
Automatic
Detachers**

**Bou-Matic®
AGRI-COMP® 2030
Farm Management
Computer**

Road To Success

See Us At The
**WEST LAMPETER
COMMUNITY FAIR**
Sept. 24-26

PROMPT SERVICE
Serving Lancaster, Chester, York, Cecil & Hartford Counties

W & J DAIRY SALES

1202 Lloyds Rd., Oxford, PA 19363

(717) 529-2569

5 3/4%

ANNUAL PERCENTAGE RATE
FINANCING

**Ford compact tractors.
At this rate, they may be
the best buy going.**

Compact tractors don't come any better than the 13 to 38-horsepower* Ford 1000 Series diesels. And now these high-quality units are an even better value.

Choose from seven models, all available with two or four-wheel drive: Ford 1110, 1210, 1310, 1510, 1710, 1910 and 2110.

Buy and take delivery between July 14 and November 30, 1986. We'll help qualified buyers arrange low 5 3/4% financing for up to five years through Ford Credit.

**Save 50% on 3-year
Extended Service Protection.**

During this special sale period, you may also purchase Ford Extended Service Plan protection for three years or 2,500 operating hours, whichever comes first...for only half of the regular cost.

This is a limited time offer.
Stop in soon for details!

*Gross engine horsepower



See Us At The
WEST LAMPETER FAIR
Sept. 24-26

LANCASTER FORD TRACTOR, INC.

1655 Rohrerstown Road, Lancaster, PA
Flory Mill Exit off Rt. 283
(717) 569-7063

Your Lancaster County Reliables

