

Livestock market and auction news

Penns Valley Livestock

Centre Hall, Pa.
Tuesday, Sept. 16

Report supplied by Auction
Beef Cows: Utility and Commercial 37.85-40.75; Cutters 35.50-37.50; Canners 31.00-34.75; Shells 30.00.

Heifers: Good 53.50-55.80; Commercial 40.00-46.50.

Steers: Choice 57.85-60.00; Good 50.50-54.00; Standard 44.00-48.50.

Bulls: Good 45.50-47.10.

Feeder Cattle: 300-500 lbs. large frame 51.00-58.00; 300-500 lbs. small frame 46.00-51.00; 500-700 lbs. large frame 44.00-48.00; 500-700 lbs. small frame 44.00-49.00.

Veal Calves: Choice 62.00-76.00; Good 54.00-61.00; Standard 43.00-51.00; Utility 37.00-42.00.

Farm Calves: Bulls 70.00-81.00; Heifers 61.00-70.00.

Hogs: 56.50-58.75.

Sows: 46.50-51.50.

Boars: 40.00-41.50.

Shoats: 25-30 lbs. per head

30.00-35.00; 30-35 lbs. per head

35.00-44.00; 35-50 lbs. per head

44.00-51.00.

Lambs: 67.00-71.00.

Goats per head: 12.00-28.00.

Valley Livestock

Athens, Pa.

Monday, Sept. 15

Report supplied by auction
Holstein Hfr. Calves 55.00-61.00.
Veal Calves 65.00-79.00.

Vealer Bull Calves 60.00-69.00.

Slaughter Calves 48.00-52.00.

Grassers & Feeders 38.00-50.00.

Lambs 50.00-74.00.

Sheep 18.00-30.00.

Hogs, 200 to 250 48.00-54.50.

Boars 42.00-50.00.

Boars 38.00-44.00.

Pigs Each 18.00-45.00.

Heifers 37.00-43.75.

Steers Med. 38.00-44.00.

Steers, feeder 40.00-55.00.

Bulls 43.00-51.25.

Cows, utility 38.00-40.75.

Cows, fat 36.00-38.00.

Cows, medium 34.00-36.00.

Cows, poor or small 28.00-33.00.

Cattle Market real good.

Calf Market steady.

Horses None.

Ponies to 90.00.

Goats each 12.00-38.00.

Remarks: Real active market on all livestock.

Feeder Sale 1st Monday of Each Month.

Dairy Sale 3rd Thursday of Each Month.

Peoria Cattle

Thursday, Sept. 18, 1986

Report Supplied by USDA

Compared with last week's close slaughter steers opened steady to .50 higher and closed steady to weak.

Slaughter heifers closed firm to .50 higher except good heifers weak to 1.00 lower.

Cows closed steady to weak, instances 1.00 lower.

Bulls mostly 1.00 lower.

Bulk of receipts Monday with not enough sales of any class Wednesday for a market test.

Supply mainly good to average choice slaughter steers and heifers with 7% cows.

Estimated receipts this week 1650 as compared with actual receipts of 1774 a week and 1585 a year ago.

SLAUGHTER STEERS: Choice 2-4, mostly 3 1050-1250 lbs. 59.50-60.50, load 61.00; 975-1050 lbs. 58.50-60.00.

Mixed good and choice 2-3 1000-1200 lbs. 56.00-59.00.

Good 2-3 52.00-57.00.

Mixed good and choice 2-3 holsteins 1300-1425 lbs. 52.25-53.75.

Part load standard and good 2-3 holsteins 1090 lbs. 48.00.

SLAUGHTER HEIFERS: Choice 2-4, mostly 3 950-1150 lbs.

59.00-60.00, part load 60.50; 875-950 lbs. 58.00-59.50. Mixed good and choice 2-3 900-1100 lbs. 56.00-59.00. Good 2-3 51.00-56.00.

COWS: Breaking utility 2-3 33.00-35.00. Cutter and boning utility 1-2 33.00-37.00, few high dressing 37.00-39.00. Canner and low cutter 30.00-34.00.

BULLS: YG 1-2 1500-2050 lbs. 44.00-50.00; 1300-1500 lbs. 43.00-45.00.

Morrison Cove Livestock

Martinsburg, Pa.

Sept. 15, 1986

Report supplied by auction

CATTLE 220. STEERS: H.

Choice & Prime 60.50-62.75, Choice 59.00-60.25; Good 55.00-58.75; Standard 42.50-51.25.

HEIFERS: Choice 56.50-58.25, Good 47.50-54.25.

COWS: Utility & Commercial 40.25-42.75; Cutters 36.50-40.00; Canner & Low Cutter 30.50-37.25.

BULLOCKS: Good & Choice 48.50-52.75. BULLS: Yield Grade No. 1 43.50-47.25. FEEDER CATTLE: Steers Good 56.50-64.50; Standard 42.00-53.00. Bulls Good 54.00-62.50, Standard 35.00-51.00. Heifers Good 51.00-56.50, Standard 37.50-47.50.

CALVES 261: Vealers Prime None; Choice 65.00-71.00; Good 57.50-61.00; Standard & Good 50.00-56.00; 90-110 lbs. 45.00-60.00; 65-90 lbs. 37.50-44.50; Holstein bulls 90-135 lbs. 60.00-93.00; Holstein Heifers 90-130 lbs. 47.00-60.00.

HOGS 97. Barrows & Gilts US No. 1-2 210-250 lb. 60.50-62.00; US No. 1-3 210-260 lb. 58.00-60.00.

SOWS: US No. 1-3 50.00-56.50.

FEEDER PIGS 37: US No. 1-3 20-35 lbs. 27.50-41.00 per head, No. 1-3 35-50 lbs. 44.00-51.00 per head.

SHEEP 7: Slaughter lambs Choice 90-120 lbs. 64.00-67.50; SI. Ewes 12.00-27.00.

GOATS 11: 15.00-41.00 per hd.

ATTENTION GRAIN PRODUCERS

You Can Sell Your Corn
By Locking In The Basis And
Pricing It Anytime
Prior To Delivery

Call For Updates On
Price And Basis:
717-761-2740
800-382-1356



CFS PFA COMMODITY FUTURES SERVICE, INC.

Seeking Profits In Commodities Trading?

- Hedging
- Speculating
- Managed Account
- Commodity Options

Call Forney Longenecker,
Commodities Investment Executive,
At (717) 295-8914

SHEARSON
LEHMAN BROTHERS
29 E. King St.
Lancaster, PA 17603



ATTENTION FARMERS

EVERY MONDAY
HATFIELD PACKING CO. and
MOYER PACKING CO.

Will Receive Your
Hogs and Cattle at the
DANVILLE LIVESTOCK MARKET
RD 4, Danville, PA

- We will receive your hogs from 8 AM to 12 Noon every Monday. Your hogs will be weighed and paid for immediately.
- We will also accept your sows & boars.
- Your cattle will be received from 12:30 to 5 P.M. We will either pay you for your cattle immediately or you may sell them dressed weight.
- There will not be a commission or yardage fee deducted from your check.
- You may call our office Monday morning and we will be able to tell you the base price for hogs for the day.

MELVIN M. LEHMAN - Owner
Danville Buying Station
Phone: 717-275-2880

CRIPPLED AND DISABLED

Cows, Steers & Bulls
For Slaughter Under
USDA Inspection

Call Wayne Taylor

717-866-6289

215-286-9400

Lebanon, Berks,
Lancaster & Chester
Counties

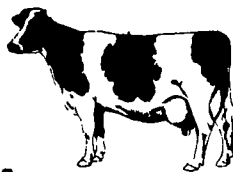
TOP PRICES
FOR DOWN, CRIPPLED
AND AS IS
COWS, BULLS & STEERS

Slaughtered Under
Federal Inspection
Paid On Dressed Weight

Tom Mulvaney
Livestock Trucking
(201) 454-4247

HANDLING:
Warren, Hunterdon, Sussex
And Somerset Counties, New Jersey

IN PENNA:
Northampton,
Lehigh And Parts
Of Carbon, Monroe
& Schuylkill Counties



ANNOUNCING

Is It Possible?

take a

closer look!

ATTENTION FARMERS

11:00 AM

Fenceposts

HAY

STRAW

GRAIN

Firewood

NEW
auction

Wood Shavings
Sawdust
Ear Corn

The Livestock Cooperative Auction Market is pleased to announce that beginning on September 23, 1986 a new added event at the auction will be a hay, straw and ear corn sale. This sale will be held each week and will start promptly at 11:00 AM. Sales will be by weight (certified weight slips required) or by the bale. Persons interested in buying or selling may receive information by contacting the Livestock Cooperative Auction Market, located on Stiger Street, Hacketts-town, NJ at 201-852-0444 during regular business hours.

Call today

SWINE PRODUCTION SALES AND SERVICE

Complete Feeding
Programs and Services

Feeding Programs to
Meet Your Individual
Needs

Computerized
Record Keeping
System

Providing Veterinarian
Service

PA. Toll Free
1-800-468-5524



419 W. High Street
Elizabethtown, PA
17022

Supplying Farm Fresh
Feeder Pigs

Marketing and Hedging
Services

Marketing of Genesis
Breeding Stock

Developing Individual
Financial Programs

Direct Dial
(717) 367-1525