

Good's Hay

Leola, Pa.
 Wednesday, Sept. 17, 1986
 Report Supplied by Auction
 52 loads.
 Alfalfa, 71.00-120.00; Timothy, 76.00-93.00; Mixed Hay, 65.00-98.00; Straw, 57.00-101.00; Corn, 60.00-80.00; Orchard Grass, 69.00.

Leinbach's Hay

Shippensburg, PA
 Tuesday, Sept. 16, 1986
 Report supplied by Auction
 32 loads.
 Alfalfa, 68.00-97.00; Mixed Hay, 63.00-94.00; Timothy, 67.00-90.00; Orchard Grass, 65.00-80.00; Straw, 50.00-65.00; Ear Corn, 63.00-71.00; Wood, 25.00 pick-up load.

Belleville Hay

Belleville, PA
 Wednesday, Sept. 17
 Report supplied by Auction
 6 loads Alfalfa, 62.50-85.00; 12 loads Mixed Hay, 35.00-77.50; 1 load Straw, 70.00; 2 loads Ear Corn, 52.50-67.50.

Keister's Hay

Middleburg, PA
 Tuesday, Sept. 16
 Report supplied by auction
 14 loads Hay, Mixed Hay, 52.50-85.00; 2 loads Straw, 50.00-87.50; 12 of Ear Corn, 57.50-67.50; 2 of Rye, 2.95-3.10.

Dewart Hay

Dewart, PA.
 Monday, Sept. 15, 1986
 Report Supplied by Auction
 18 loads Hay, 39.00-70.00; 5 loads Wood, 25.00-40.00 per ld.; Ear Corn, 57.00-59.00.

Chambersburg Hay

Chambersburg, PA
 Thursday, Sept. 18
 Report supplied by Auction
 2 loads of fourth cutting Alfalfa, 78.00 and 96.00; Mixed Hay, 85.00.

Greencastle Livestock

Greencastle, Pa.
 Monday, Sept. 15
 CATTLE 692. SLAUGHTER STEERS: Choice & Prime 60.00-63.75, few to 65.00; Good & Choice

56.00-61.75; Good & Choice — Holstein 50.50-56.00; Standard & Good Holstein — 45.00-50.50.

SLAUGHTER HEIFERS: Choice 58.00-61.00, few to 62.75; Good & Choice 52.50-58.75; Standard & Good 47.00-53.50.

COWS: Utility & Commercial 37.00-41.75, few to 44.75; Cutter & Boning Utility 35.00-41.00, few to 42.75; Canner & Low Cutter 35.50 & down.

BULLS—ALL WEIGHTS: Yield Grade 1 48.00-52.00; few to 54.00; Yield Grade 2 42.00-48.50.

STOCKER CATTLE—ALL WEIGHTS. Steers — Medium & Good 58.00-68.00; Heifers — Medium & Good 48.00-58.00; Bulls — Medium & Good 52.00-60.50; Steers — Holstein 42.00-46.00.

CALVES 515. Good & Choice — 125 to 250 pounds 70.00-85.00 few to 90.00; Medium & Good — 125 to 250 pounds 58.00-72.00; Medium & Good — 80 to 120 pounds 45.00-55.00; Light & Cull — all weights 47.50 & down; Holstein Bulls — return to farm up to 81.00; Holstein Heifers — return to farm up to 60.00.

LAMBS, SHEEP & GOATS 79. Choice Lambs 64.00-68.50; Medium

& Good Lambs 59.00-66.00; Light & Cull Lambs 55.00-66.00; Sheep, Ewes & Bucks 20.00-31.00; Goats — all sizes (by head) 18.00-50.00.

HOGS 131. No. 1-3 Butcher Hogs — 190-225 pounds 60.00-61.00; No. 1-3 Butcher Hogs — 225-250 pounds 60.50-62.00; No. 1-3 Butcher Hogs — 250-300 pounds 56.00-60.00; Good Butcher Sows — 400 pounds up to 61.00; Good Butcher Sows — 400 pounds up to 60.00; Heavy Boars — over 300 pounds 41.00-46.00; Pigs— all sizes (by head) 20.00-38.00.

Sale every Monday afternoon at 3:30 p.m.; Hay & straw sale every Monday at 1:00 p.m.

Special Feeder Cattle Sale Friday, Oct. 3rd at 7:00 P.M.

Oklahoma Cattle

Wednesday, Sept. 17
 Report supplied by USDA
 Cattle and calves: Estimate 1,800. Same Day Last Week 864; Auction Sales Totaled 791. Tuesday's Final Auction Count 8,277.

Limited Test Feeder Steers and Heifers steady. Demand good for thin Feeders for grazing purposes; fair for all others. Slaughter Cows 50 cents to 1.00 higher. Slaughter Bulls steady. Slaughter Cattle demand good; packer and country buyers competing for numbers. Bulk supply medium frame 1 thru 2 250-600 lb. feeder steers and heifers. Cows and bulls near 25% of

auction sales.
 FEEDER STEERS: Medium frame 1 265-325 lb. 80.75-85.00; 400-475 lb. 71.50-79.00; 500-600 lb. 64.30-70.00, 595 lb. full 63.30; few 600-800 lb. 61.80-61.90. Medium & Large Frame Mixed 1-2 205 lb. thin & gaunt 89.50; pkg. 355 lb. 72.50; 500-600 lb. 62.00-66.20. Medium and Large Frame 2 600-700 lb. 55.00-59.70, lot 620 lb. thin 60.60.

FEEDER HEIFERS: Medium Frame 1 250-300 lb. 68.75-74.00; 325-350 lb. 65.25-69.10; 400-460 lb. 61.00-65.60; pkg. 565 lb. fleshy 57.25. Medium Frame Mixed 1-2 170 lb. 75.00; 365 lb. 64.00; 475-650 lb. 55.90-58.80. Medium and Large Frame 2 230 lb. Longhorn crosses 69.25; 350-550 lb. 54.00-57.00; 600-700 lb. 53.60-55.60.

SLAUGHTER COWS: Boning Utility 1-2 36.90-39.80. Lot mixed cutter and boning utility 41.20. Cutter 1-2 35.50-38.00. Canner and low Dressing cutter 31.00-35.50.

SLAUGHTER BULLS: YG 1 1200-1700 lb. 43.00-48.00.

REPLACEMENT OR FEEDER COWS: Small and Medium Frame 1-2 medium aged 37.25-38.00; aged 35.25-37.80, lot in canner flesh 31.20.

FOR THE WEEK: Feeder Steers under 625 lb. and Heifers under 550 lb. steady to 1.00 lower; heavier weights both classes 1.00-2.00 lower. Slaughter cows .75-1.00 higher. Slaughter bulls firm to 1.00 higher.

Green Dragon Livestock Sales



Location: Ephrata RD 4. 1 mile N. on North State St., Ephrata.

COWS COWS COWS SALE EVERY FRIDAY

Lots of good Northern Feeder & Stockers. Slaughter Cows - Bull Steer, Veal-lamb.

11:00 A.M.-Beef Sale 200-300 each week.
 1:00 P.M.-Dairy Sale.
 7:00 P.M.-Small Animal Sale.
 For Special Sales and Herd Dispersals on farm or at our barn or other market information call: Office 717-733-2444, Home 717-838-4318.

WALTER H. RISSER, Proprietor

All out of state and new buyers must have cash or certified check or current letter of credit from bank.

FRIDAY, SEPTEMBER 26

ON THE FARM MONTHLY

BRED GILT SALE

1:00 P.M.

Sale To Start Promptly Every 4 Weeks

20 Head Due Between Oct. 1-7
 25 Head Due Between Oct. 7-19

Located 18 miles south of Lancaster, Pa., 6 miles south of Quarryville, take Rt. 272 to Little Britain, turn north, follow Little Britain Road to Jackson Road, right. 2nd farm, OR take Rt. 222, out of Quarryville to Cedar Hill Road to Little Britain Road to Jackson Road, left. Watch for sale arrows.

50 to 60 Head

WHITE DIAMOND GILTS

Here Now a new cross again. Large White & Landrace, first generation true F-1 gilts. Parent stock originated from Lieske Bros. Minnesota. Very productive in litter size and feed conversion.

Vaccinated for Lepto, Erysipias, Rhinitis, E'Coll, Pasteurella

Hand mated with Breeding Dates

Local Trucker Available
 No Hogs Sold On Commission

JOHN B. STOLTZFUS

R.D. 1, Kirkwood, Pa.
 Abe Diffenbach, Auctioneer AU225L

NEXT SALE DATE OCTOBER 24, 1:00 P.M.

D & H Cattle Transport

Local and Long Distance Hauling With A 24 Ft Gooseneck Trailer

Call Don At
717/284-2580
 Lancaster, Pa

KING'S AUCTION

KIRKWOOD

Hay, Straw and Grain Auction

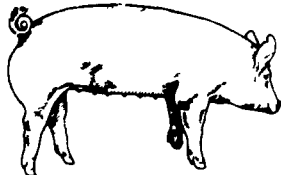
EVERY TUESDAY

12:00

Located Rt. 472 5 miles south of Quarryville or 6 miles north of Oxford at Shaub's Auction House

Lloyd H. Kreider, Auctioneer AU-00613L

No out of state checks
ALL TRUCKERS AND FARMERS WELCOME



EMERY'S BUYING STATION

OPEN TO RECEIVE YOUR MARKET HOGS AT THE GREEN DRAGON MARKET RD 4, EPHRATA, PA 17522 1 MILE NORTH OF EPHRATA ON NORTH STATE STREET.

HOURS: MONDAY, TUESDAY, and WEDNESDAY 6:00 A.M. to 11:30 A.M.
 215-458-5677 Residence
 717-733-9648 Office

YOU ARE PAID FOR YOUR HOGS IMMEDIATELY

Ken & Lois Emery, Proprietors

ATTENTION FARMERS

The New Way To Market Your Livestock

HATFIELD PACKING CO. AND MOYER PACKING CO.
 Will Receive Hogs Will Receive Cattle

At The

BLAIR-BEDFORD BUYING STATION

RD 1 Martinsburg, Pa.

MONDAYS - Hogs 8 AM to 11:30 AM
 Cattle & Calves 8 AM to 3 PM

THURSDAYS - Cattle & Calves 8 AM to 3 PM

- No commission or yardage fees deducted from check
- Livestock weighed and paid for immediately
- You may call our office sale day for prices

DALE R. HOOVER - Owner

Business 814-793-3077
 Residence 814-793-2657

F & S OF VIRGINIA HAY AUCTION

NEW MARKET, VA

EVERY TUESDAY, AT 11:30 A.M.

Open to everyone to buy & sell.

Drought Stricken area in the heart of the Shenandoah Valley Horse Country, Dairy & Beef Cattle Country. 3% Commission will be charged to the sellers.

Auction will be conducted at the F & S Auto Auction, located on Rt. 11 North, 2 miles North of New Market, VA and 3 miles South of Mount Jackson, VA.

Our policy is cash, certified check or bank approved letter.

For more information call:
 703-740-8005 or 703-298-9187.



HAY & STRAW SALE

12:00 Noon
 Every Wednesday
 Westend of Avondale at the intersection of Baltimore Pike and Route 41.

Harvey Z. Martin
 215-268-3604 (Office)
 215-445-5303 (Residence)

ATTENTION

Dairy Buyout Farmers

- * Get the most for your herd
- * Go direct - Farm to Packer
- * Any size herd - all weights and grades of cows
- * Trucking provided
- * Paperwork handled quickly and efficiently

TAYLOR PACKING CO., INC

P.O. Box 188
 Wyalusing, PA 18853
717-746-1309