

Pennsylvania Dairy Princess Will Be Crowned Tonight In Harrisburg



These 36 county dairy princesses will compete for the State Dairy Princess title at the Marriott Inn, Harrisburg, tonight. The coronation ceremonies will begin with a hospitality hour at 5:30 p.m., followed by dinner at 6:30 p.m. and will climax with the selection of the dairy industry's new representative.

The contestants pictured here are, front row from left, Yonna Taylor, Bradford County; Laurie Smith, Blair County; Julie Tewksbury, Susquehanna County; Teresa Gawrys, Clarion-Venango County; Deborah Kann, York County; Karen Leslie, Beaver-Lawrence County; Sherry Gregor, Cumberland County; Heidi O'Neal, Bedford County; and Julie Worobey, Wayne County.

Second row from left: Melissa Pavlock, Elk County; Lynn Marie Hembury, Sullivan County; Leigh Ann Kimmel, Indiana County; Jill Minor, Washington-Greene County; Dawn Lampman, Potter County; Debra Marie Hall, Franklin

County; Karen Shertzer, Juniata County; Carol Kurtz, Berks County, Shanna Jo Cunningham, Huntingdon County and Anna Baccus, Warren County.

Third row from left: Susan Kay Fisher, Mifflin County; Jennifer Yaple, Clearfield County; Diana Moyer, Bucks County; Lisa Ruth, Montgomery County; Tammy Jones, Mercer County; Becky Hipple, Lycoming County; Melissa Walker, Somerset County; and Jennifer Weimer, Adams County.

Fourth row from left: Lydia Reed, Jefferson County; Francine Palm, Perry County; Christine Adams, Wyoming-Lackawanna County; Pamela Kindig, Lancaster County; Donna Bickel, Chester County; Teresa Herman, Tioga County; Marsha Anthony, Crawford County; Susan Waite, Sun-Area; Dora Kay Hetinger, Centre County; and Darla Bisbee, Erie County. 1985-86 State Dairy Princess Beth Heald stands at front center.

(Con
Leban
Lebano
at the Or
Society 21
Joyce E

Member
met at th
Heisey, Mc
Anna I
secretary's
Dannemar
report.
Mary Sh
review of
"It's My T
Hostesse
Margaret
Houseal.
Farm v
celebrate

Lancast
its 22nd
shey Farr
on Sept.
and guest
Mrs. C
ducted de

The Sep
Society 7
of the
Emigsvill
and one
tended.
Anna Z
Beatrice
game.
The gro

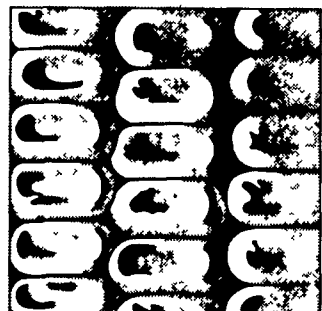
CG-462



Disease tolerance.



High yielding ability.



Rapid drydown.