

Farm Women

Lancaster Society 22

Barbara Pizzarello, director of the House of His Creation, was the featured speaker for the September meeting of the Society of Farm Women #22. She described the philosophy of the group homes for pregnant teenagers, saying, "The focus is on the Christian family. We try to welcome them and make them family."

There are two homes, one in Coatesville with nine girls and one in Lititz with six girls. Pizzarello pointed out that 57 percent of the funding for the homes comes from individuals, 30 percent comes from churches and the remainder comes from foundations, with 2 percent provided by the girls and their parents. Their budget is \$¼ million annually.

Since its founding in 1973, the homes have helped 400 "hurting"

girls, Pizzarello said. These girls have come from 36 states and a few from foreign countries. Included in the family life are daily devotions and Bible study.

Society members contributed gifts of canned goods and a ham to the home.

Hostess for the meeting was Alma Rohrer, with co-hostess Mary Young. Members made plans to participate in the Farm Women day celebration on Oct. 14, and in Christmas in October on Oct. 20. They will also help with bingo at Conestoga View on Sept. 18.

Next meeting will be on October 14 at 7 p.m. at the home of Ann Diller. Husbands will be entertained with an evening of table games.

Lancaster Society 26

Lancaster Society 26 entertained Society 23 Aug. 28 at Wenger Clinic.

Lois Brubaker led devotions. Olive Yoder presented a program

called "A Mother's Walk in Life."

Vice president Lucille Brubaker conducted the business meeting. Annie Ginder will host the next meeting on Sept. 25.

Members of Lancaster Society 10 met Sept. 6 at the home of Mary Weider. Ida Kunkle led devotions.

The Ways and Means Committee suggested the group have two tables at Christmas in October at the Farm and Home Center Oct. 20 and 21. All members present agreed.

Members were reminded that Lancaster County Farm Women Day will be celebrated Oct. 14 with a breakfast at Willow Valley from 9:30 a.m. to noon.

The county convention will be Nov. 1 at the Farm and Home

Berks Society 7

Members of Berks Society 7 met recently at Kauffman's Bar B Q Ranch.

The group planned entertainment for its 20th anniversary celebration at 8 p.m. Oct. 13 at the Conrad Weiser High School cafeteria. All Berks County farm women groups are invited. An RSVP before Sept. 29 is requested. Send them to Lillian Grajewski, R1 Wernersville, Pa., 19565.

Lancaster Society 10

Center.

Society 10 will give \$50 to the County Project, which is the American Red Cross this year.

The Program Committee has planned the following events for next year: June 1987, a visit to

Donegal Presbyterian Church; August 1987, lawn fair at Conestoga View; and December 1987, Sight and Sound in Strasburg.

The next meeting will be held at the home of Jennie Shoemaker.

Berks Society 5

Berks Society 5 held a progressive dinner Sept. 6 in conjunction with its monthly meeting. Members met at the home of Mrs. Carol Stoudt, R1 Rehrersburg, for salad, then proceeded to the home of Mrs. Sylvia Scharff, R2 Bernville, for soup and then dessert provided by hostess Sandy Rauenzahn.

During the business meeting following the meal, members selected secret pal names for Christmas. Members decided to again buy Christmas gifts for the residents of Twin Spruce Home in Myerstown and for residents of Independence Terrace in Womelsdorf.

Upcoming events for Society 5 include the Berks County Farm Women Convention, Oct. 4 at the Berks County Ag Center and Berks

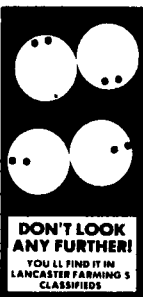
Society 7's 20th anniversary celebration Oct. 13 at 8 p.m. at Conrad Weiser High School.

Members will hold a ham on roll sale Oct. 18. Sandwiches will be made at the home of Mrs. Celeste Manbeck, R1 Womelsdorf. Members are to contact either Mrs. Karen Mohn or Mrs. Sandy Rauenzahn with orders by Sunday, Oct. 12.

Because members will attend Society 7's anniversary celebration, the society will not meet in October.

The next meeting of Berks Society 5 will be held Nov. 11. Members will tour Christmas Village beginning at 7 p.m. and will proceed to the home of Mrs. Marlene Sattazahn, Womelsdorf, for the business meeting.

(Turn to Page B21)



INVITATION MUNCY CHIEF FIELD DAYS

At Muncy, PA

SEPTEMBER 25 & 26, 1986

COME & SEE CROP PRODUCTION, NURSERY & FIELD TRIALS - REFRESHMENTS

MUNCY CHIEF HYBRIDS, INC.



Call For Our Sept. Special



Heavy Duty Replacement Chain

UNBEATABLE CHAIN AT UNBEATABLE PRICE



Heat Treated



All Chain 10 Yr. Warranty

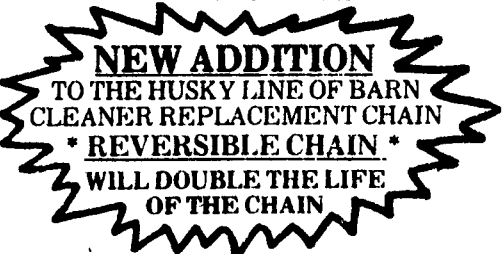
Will Fit: • Starline • Klinzing • Berg • Cornell • Jamesway • Acorn • Farmway • Better-Bilt • Farm-O-Matic • Badger • Patz • Hedlund • Clay • Barn-O-Matic



HOOK AND EYE

FORAGE LINKS

This Chain Will Replace Most Brands of Chain



NEW ADDITION TO THE HUSKY LINE OF BARN CLEANER REPLACEMENT CHAIN * REVERSIBLE CHAIN * WILL DOUBLE THE LIFE OF THE CHAIN

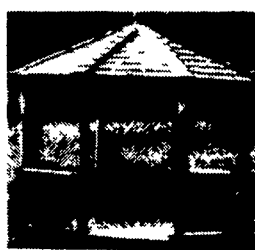
24 Hrs. - 7 Days A Week - Refrigeration Service Installation, Sales And Service

RAY SHENK

505 E. Woods Drive

Lititz, PA 17543

(717) 626-1151



Gazebos made to order. Also custom built storage sheds. Dealer Inquiries Welcome



Pressure treated wood with cedar shake shingles or Painted choice of color with asphalt shingles. 8 - 10 - 12 - 14 ft. wide You pick your own size

Your choice of 3 styles

Mini Barn Quaker Shed A Frame

Large variety of colors and sizes to choose from.

Lykens Valley Structures

RD 2, Box 59, Millersburg, PA 17061
Leave message at: 717-692-2645
No Sunday Calls

HERSHEY

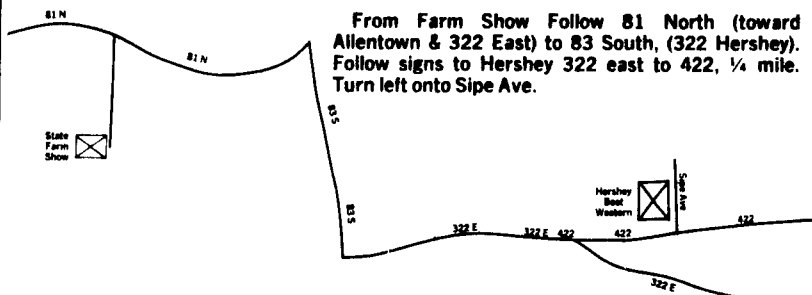


Located 15 minutes from Farm Show Complex
Rt. 422 & Sipe Avenue, PO Box 364
Hershey, PA 17033

Special Farm Show Rates

Single \$35.00
Double \$38.00
\$4.00 Additional Per Person

Complimentary Continental Breakfast
Hershey Chocolate Bar and Morning Newspaper Included
(Nine Restaurants within ¼ mi, one open 24 hrs.)



For reservations call:

PA 1-800-222-1987
CT, NY, NJ, DE, DC & MD 1-800-233-0338
OR: 717-533-5665
ASK FOR FARM SHOW RATES

A.T.V. Fall Introduction



Free Refreshments! Friday, Sept. 26 10 to 8
Door Prizes! Saturday, Sept. 27 10 to 4

See The All New Suzuki Line-Up For '87 Including The First "True 4-Wheel Drive ATV"

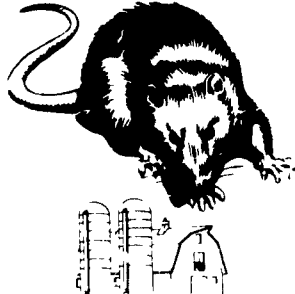
ALL MODELS AT DISCOUNT PRICES

TRANS-AM CYCLE SALES INC.

933 Lititz Pike Lititz, Pa.

Phone 717-626-4765

ATTENTION FARMERS... FREE ESTIMATES ON RODENT CONTROL



RODENTS carry diseases which can endanger the health of your poultry flocks. Your business is raising them. Ours is protecting them.

We Specialize In Sanitizing And Disinfecting Poultry Houses



Lancaster, PA 397-3721
Lewistown, PA 248-0983
State College, PA 237-7607

Since 1928 Pest control is too important to trust to anyone else