



HAY MARKETS

Pa. Grain

Monday, Sept. 15

Report supplied by PDA

COMPARED WITH LAST MONDAY'S MARKET FOR SOUTHEASTERN, CENTRAL AND SOUTH CENTRAL PA.: Corn steady to .20 lower; Wheat unevenly steady; Barley and Oats mostly steady; Ear Corn steady to \$.50 lower.

Southeastern Pennsylvania

Corn No. 2-y range 1.65-1.95, average 1.80; *Contract for Harvest 1.57-1.77; @Wheat No. 2 range 2.35-2.60, few reported 2.75, average 2.53; Barley No. 3 range 1.25-1.40, average 1.33; Oats No. 2 range .90-1.15, average 1.00; *Soybeans No. 1 range 4.40-4.50, average 4.45; *Gr. Sorghum #2 *Contract for Harvest 1.65; Ear Corn range 46.00-61.00, average 53.92.

Central Pennsylvania

Corn No. 2-y range 1.70-2.00, average 1.86; @Wheat No. 2 range 2.30-2.50, average 2.39; Barley No. 3 range 1.25-1.40, average 1.30; Oats No. 2 range .70-.95, average .87; *Soybeans No. 1 range 4.20-4.80, average 4.42; *+Buckwheat range 8.00, average 8.00; Ear Corn 47.00-55.00, average 50.46.

South Central Pennsylvania

Corn No. 2-y range 1.60-2.20, mostly 1.75-2.10, average 1.92; @Wheat No. 2 2.20-2.50, average 2.34; Barley No. 3 range 1.20-1.40, few reported 1.60, average 1.37; Oats No. 2 .90-1.00, few reported 1.20, average 1.00; Ear Corn range 50.00-60.00, average 54.88.

Western Pennsylvania

Corn No. 2-y range 1.60-2.25, mostly 1.88-2.05, average 1.95; @Wheat No. 2 range 2.20-2.40, average 2.30; Oats No. 2 range .80-1.00, average .90; Ear Corn range 55.00-60.00, average 56.67.

Southeastern, Central & South Central Summary

Corn No. 2-y range 1.70-2.00, average 1.84; @Wheat No. 2 range 2.30-2.60, average 2.43; Barley No. 3 range 1.25-1.40, average 1.33; Oats No. 2 range .80-1.10, average .95; Soybeans No. 1 range 4.20-4.80, average 4.43; Ear Corn 46.00-61.00, average 52.97.

Month Ago

Corn No. 2-y range 2.19; @Wheat No. 2 range 2.43; Barley No. 3 range 1.32; Oats No. 2 range .93; Soybeans No. 1 range 4.64; Ear Corn range 63.48.

Year Ago

Corn No. 2-y average 2.48; Wheat No. 2 average 2.60; Barley No. 3 1.51; Oats No. 2 average .98; Ear Corn average 66.52.

Regional Hay

Eastern, Pa.
On-Farm Sales

HAY & STRAW MARKET FOR EASTERN PA. (All Hay No. 2 and better prices paid by dealers at the farm and per ton.) - Hay and Straw mostly steady.

Alfalfa 80.00-100.00; Mixed Hay 60.00-90.00; Timothy 60.00-90.00; Straw 50.00-70.00; Mulch 25.00-40.00.

Lancaster Co.
Auctions

SUMMARY OF LANCASTER CO. HAY AUCTION For Week Ending Sept. 12, 1986 - PRICES PER TON: LOADS-149 Hay, 32 Straw and 51 Ear Corn.

Alfalfa 70.00-114.00; Mixed Hay 60.00-124.00; Timothy 77.00-120.00; Straw 62.00-111.00; Ear Corn 59.00-73.00.

Central Pa.
Hay Auction

SUMMARY OF CENTRAL PA. HAY AUCTION For Week Ending Sept. 12, 1986 - PRICES PER TON: LOADS-41 Hay, 8 Straw, and 27 Ear Corn.

Alfalfa 60.00-99.00; Mixed Hay 50.00-92.00; Timothy 68.00-89.00; Straw 42.00-67.50; Ear Corn 55.00-70.00.

Frederick Co. Hay

Buckeystown, Md.

Thursday, Sept. 18, 1986

Report Supplied by Auction

29 loads. Market steady to \$10 lower on all grades, demand fair.

Alfalfa, 5 loads, good to fancy, 127.00-140.00, 5 fair to good 95.00-125.00, 1 damaged 56.00; Timothy: 4 fair to good 110.00-125.00; Clover/Timothy Mix, 2 Fancy 120.00-122.00, 2 good 90.00; Mixed Alfalfa and Grass: 2 good 116.00-125.00, 1 fair 79.00; Straw: 4 loads bright, 80.00-87.00.

Carroll Co. Hay

Westminster, MD

Tuesday, Sept. 16

Report supplied by Auction

11 loads.

Very good Alfalfa, 135.00; Timothy, 87.00-117.00; Mixed Hay, 73.00-107.50; other Grass Hay, 76.00.

Soybean and Foxtail Hay, 64.00-65.00; Wheat Straw, 80.00-90.00; Oat Straw, 82.00.

Will be selling Firewood starting next week.

Green Dragon Hay

Ephrata, PA

Friday, Sept. 12

Report supplied by Auction

68 loads.

Mixed Hay, 39.00-142.00; Timothy, 77.00-145.00; Alfalfa, 45.00-99.00; Orchard Grass, 47.00-105.00; Clover, 75.00. Straw, 46.00-100.00; Corn, 63.00-73.00; Rye, 3.25 bu. Barley Seed, 3.30 bu.; Oats 1.35-1.60 bu.

New Holland Hay

New Holland, PA

Monday, Sept. 15

Report supplied by Auction

106 loads.

Alfalfa, 69.00-115.00, 1 at 159.00; Mixed Hay, 50.00-110.00; Timothy, 68.00-132.00; Clover, 1 at 50.00; Grass, 53.00-78.00.

Straw, 68.00-123.00; Ear Corn, 67.00-77.00; Oats, 1.55-2.10 bu.; Rye, 2.85-3.10 bu.

F & S Hay

New Market, Va.

Tuesday, Sept. 16, 1986

16 loads.

Alfalfa 121-140; Alfalfa mix 121-130; Routh Timothy (1 load) 85; Clover (1 load) 95; Bromegrass (1 load) 126; Rye Straw (1 load) 80; Peanut hulls (1 load) 147.

LIVESTOCK HAULING

Dependable Service

6 Possum Bottom Tractors

and Trailers

Call Anytime

Vintage Sales Stables, Inc.

L. Robert Frame Manager

Office 717-442-4181

Office & Home: 215-458-5060

Office & Home: 215-458-8518

48% Soybean Meal, \$219.00

Distillers Grains, \$170.00

Per Ton — Delivered

EVEN LOWER PRICES FOR LARGER QUANTITIES.

Buy up to 11 tons and save more! No extra charge to blend these ingredients.

NOTE: We can sell for less because we sell only to people who pay promptly.

WALKER COMPANY

Gap, PA 17527

717-442-4169 (Collect)

NEW HOLLAND SALES STABLES, INC. - THE ACTION AUCTION

MONDAY

FAT HOGS

EARLY BIRD HOG SALE

7:30 AM

For Your Protection Your Hogs Must Be Identified

10:00 AM

HORSES



MULES

11:00 AM



**HAY
STRAW
GRAIN**

1:30 PM

**BEEF SALE
CALF, SHEEP,
GOATS**



WEDNESDAY

12:00 NOON

DAIRY



COWS

HEIFERS, BULLS

NEW HOLLAND SALES STABLES, Inc.

12 Miles East of Lancaster
on Route 23, New Holland, Penna

The Action Auction

717-354-4341

Mgr. - Abe Diffenbach - 717-393-4464

Norman Kolb - 717-397-5538

Field Representatives

Alan Diffenbach 717-656-9806

Luke Eberly 215-267-6608 - 738-1865

WEDNESDAY

FEEDER PIG

SALE

1:30 P.M.



We endeavor to keep our barns cleaner than yours. State graded until 12 Noon

THURSDAY

10:00 AM

BULLS -

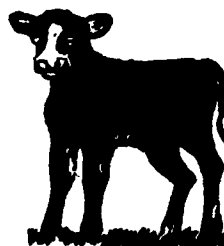
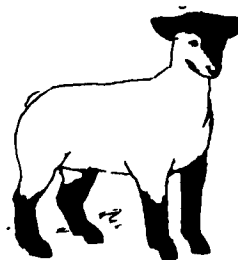


**STEERS -
BEEF COWS**



2:30 P.M.

CALVES



**SHEEP
GOATS**

Market your livestock thru New Holland Sales, your neighbor does

Pick-up your check before you leave