

## Public Auction Register

Closing Date Monday 5:00 P.M.  
of each week's publication

SAT. OCT. 18 - 12 Noon  
Exceptional 113 Acre  
Crop & Beef Cattle Farm.  
Take Rt. 234 from  
Biglerville Square East off  
Rt. 34, 1 mi. to Guernsey  
Rd. thence N. 1/2 mi. to  
Guernsey and The Quaker  
Run Rd. going N. 1/2 mi. to  
sale in Butler Twp.,  
Adams Co., PA. Hansford  
& Ruth Snead, Owners.  
Clair R. Slaybaugh, Auct.

SAT. OCT. 18 - 1PM  
Discovery '86 Angus Club  
Calf & Select Show Heifer  
Sale. To be held at the  
Lebanon Area  
Fairgrounds, Lebanon,  
PA. Presented by: PA  
Angus Association.  
Managed by: Harry H.  
Bachman, Auct.

SAT. OCT. 18 - 5:30PM  
Consignment Auction of  
Older Farm Toys at  
Lancaster Mennonite  
School Gym, Rt. 30 E. of  
Lanc., PA. Farm Toy Show  
Same Day 8:30AM. 717-  
768-3554.

TUES. OCT. 21 - 11AM  
Complete Purebred Herd

Dispensal located 5 mis S.  
of New Holland, 4 mis. E.  
of Intercourse. New  
Holland, RD 2. Terms by:  
J.S. Diener & Sons Paul  
Snyder, Auct.

TUES. OCT. 21 - 7PM  
Special Fall Feeder Cattle  
& Feeder Pig Sale. At  
Carlisle Livestock Market,  
Inc. Exit 12 off I-81.  
THURS. OCT. 23 - 9:30AM  
Inventory Reduction, new  
air hand tools, air tanks &  
compressors (all sizes),  
milk tanks & milkers.  
Located 1 1/2 mi. Southeast  
of Kirkwood, PA on  
Cooper Dr. Stoltzfus

### PENNSYLVANIA ELITE AYRSHIRE SALE

At The Pennsylvania All-American Dairy  
Show, Harrisburg, Pa.

**SEPTEMBER 23, 1986** 1:00 P.M.

40 Head of Top Quality 'Selected'  
Animals from Pennsylvania, New York,  
New England and Canada.

Featuring

9 Young Cows - Fresh or due soon  
11 Fresh Heifers - Top Quality  
14 Bred Heifers - A Great Group  
6 Yearlings & Calves - Some Show  
Prospects

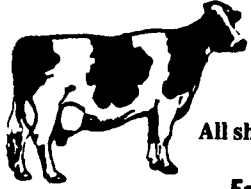
Sale Managed by  
**Englan Select Sales Inc.**

Box 85, Madison, N.Y. 13402

315-893-7951

## KISH VALLEY DAIRY SALES DAIRY SHOW

Cash Prizes and Ribbons will be given in seven classes:  
Holstein Milker • Holstein Dry • 3 Yr Old Milker  
3 Yr Old Dry • 2 Yr Old Milker • 2 Yr Old Dry  
Mixed Breed



**THURSDAY, SEPTEMBER 25, 1986**

Show at 9:30 a.m.

Sale at 12:30 p.m.

All show cattle must be consigned by Wednesday,  
September 24, 1986 no later than 5 p.m.

For more information contact:

Sherman Glick  
(717) 935-5195  
Home (717) 248-0960

Charles C. Myers  
(717) 898-0983

## PUBLIC AUCTION

WEDNESDAY  
OCTOBER 1, 1986  
10:30 A.M.

ROBERT "BOB" HUBER ESTATE

LOCATION: Route 4 Pine Grove, Pine Grove Twp., Schuylkill  
County, Pa. From I81 go east on Rt. 443 from exit 31 to Pine  
Grove, turn left onto Mill St. at the Armory, bear left on Y onto  
Long Stretch Road 1 mile to farm on left.

### TRACTORS

JOHN DEERE 4020 DIESEL- wide front- 18.4-34 rear rubber- 4380 hrs.  
2 JOHN DEERE 3020 DIESELS- Row Crops  
JOHN DEERE 1020 utility gas with hyd. loader- 1325 hours

JOHN DEERE 327 BALER w/40 bale ejector  
new- used for 365 bales

### TILLAGE & PLANTING EQUIPMENT

JOHN DEERE 7000 6 row corn planter w/insecticide & monitor - real  
clean; JD 450 5 bottom semi mtd. plow; JD 4 bottom semi mtd. plow; JD 28  
& 36 disc transport harrows; JD Van Brunt 17 disc grain drill; Vicon 3 pt.  
spin spreader; Century transport sprayer w/boom; 4 section spring tooth  
harrow.

### HAY & HARVESTING EQUIPMENT

DION 3 beater forage wagon on HD gear; EZ 2 beater forage wagon; 3  
wooden side hay wagons; NH 469 mower conditioner; 2 McCurdy gravity  
bin wagons on JD 1065A gears w/11L-15 tires; IH 56 hopper blower; NH 256  
Rolabar 5 bar rake; flat bed wagon; NH 36 crop chopper; NEW IDEA 323 1  
row corn picker and Zimmerman bale elevator.

### OTHER EQUIPMENT & FARM RELATED ITEMS

NEW HOLLAND 355 grinder mixer; INT. 550 single beater manure  
spreader w/hyd. tailgate; INT. 155 single beater manure spreader; 4"  
grain auger; round bottom transport cattle feeder; MGS 2 axle trailer  
w/sides; 2 fuel tanks w/pumps; tractor tire chains; small air compressor;  
bag cart; 2 hole corn sheller; few hand tools; fence chargers;  
wheelbarrows; come-a-long; shovels; forks; circ. saw; pipe threader and  
other unlisted items.

### CROPS & DAIRY EQUIPMENT

Quantity of hay and straw; appx. 60 acres of standing corn; 2 DeLaval 35#  
sterling units; SS pails; Surge dumping station; barn fans; cow clipper,  
medecine, etc.

AUCTION ORDER: Small items, farm equipment, crops.

Auction by  
**DORIS HUBER- EXECUTRIX**

HARRY H. BACHMAN- Auctioneer  
(717)867-1809 AU-000033-L

TERMS: CASH- Checks by approval only

Be Sure- Bring Bank Letter of Credit

Note- Auction Only Because Of Untimely Death of Mr. Huber.

FOOD- Pine Grove Church of the Brethren

Hardware. Auctioneer,  
Steve & Steve, Jr.  
Petersheim.

FRI. OCT. 24 - In Cum-  
berland Co., 7 mis. E. of  
Shippensburg, 3 mis. W.  
of Newville. Le-Ida Farms  
Holstein Production Sale.

Kling's Auction Service.  
Sale Mgrs. Dave Rame,  
Pedigrees.

FRI. OCT. 24 - 9AM  
Michigan's Fall Draft  
Horse Auction at Lake  
Odessa Livestock Auction,  
Lake Odessa, MI.

## PUBLIC SALE

Of Antiques, Bottle Collection,  
Household Goods  
STRASBURG

TUES., SEPTEMBER 23, 1986

At 4 P.M.

Located at 110 Washington St.,  
Strasburg, Lancaster Co., Pa.

### Antiques

Sideboard; Trestle Desk; Cane Seat Rocker  
& Chairs; Wicker Rocker; Oak Headboard;  
Twin Brass Bed; Dresser; Oak Planters; High  
Chair; Singer Treadle Sewing Machine; Oak  
Whiskey Keg; Picture Frames; Brass Bucket;  
Copper Weathervane; Tin Candelabra; Bells;  
Records; Glassware; Books; Feed Bags.

**BOTTLES:** Whiskey Flasks; Milk Bottles  
(embossed) (1 qt.), Sealtest, 5c Store, Cream  
Top, Millside Farm, Spring Mountain - PINT  
SIZE: Wayne Stauffer (Willowbrook Farm,  
Neffsville - Spruce Villa - 1/2 Pint - Walnut  
Grove, Spruce Villa, Borden's - Printed 1/2  
Pints.

500 Assorted Bottles (dated); Larkins Bottle.  
Wooden Buckets; Pie Boards; Sensenich  
Propeller; Pitcher Pump & Trough; Battery  
Charger.

**SCALES:** Grocer's, Balance.

Dingelstucks; Wilbur Chocolate Molds; Hay  
Hooks; Brunnerville Pump Trough; Cigar  
Boxes; Bag Wagon; JACKS: Steamroller,  
Truck, Car, Model T, Buggy Jack; Cast Iron  
Milk Can; Tin Milk Cans; Log Roller; Pa. R.R.  
Tie Carrier; Schwanen Sense.

### Old Wooden Wheelbarrow

Quoits; Clocks; Coal Bucket; Kerosene  
Lamp & Lanterns; Hall Plane; Broad Axes;  
Chisels; Steel Wheels; Pulleys; Single Tree;  
Meat Cleavers; Meat Hooks; Ox Yoke; Rat  
Tail Nuts; Ladle; Antique Hinges; Iron Ket-  
tles; Apple Butter Stirrer; Wrought Iron Tools;  
Ice Tong; Sandstone Grinder; Heavy Chains.

Terms by:  
**RANDY & AUDREY LONG**

T. Glen Horst, Auct.  
AU000438L - 859-1331  
Timothy G. Horst, Auct.  
AU001767L - 738-1245

## Dairy and Livestock Sales



## PUBLIC SALE

OF VALUABLE 57 ACRE DAIRY  
FARM WITH STREAM  
ZONED R-H AND R.M. WITH  
ROAD FRONTAGE

**TUESDAY, OCTOBER 7, 1986**  
at 2:00 p.m.

Located one mile north of Quarryville,  
seven miles south of Strasburg, turn off  
Rt. 222 on Carmargo Road. Go to Stone  
Road, turn left, first farm on right. Eden  
Township, Lancaster County, Penn-  
sylvania.

2 1/2 Story frame dwelling with siding, kitchen  
with new oak cabinets, dining room, living and  
family room, laundry with 1/2 bath, mud room.  
Second floor- four bedrooms, wall to wall  
carpet, full bath; full basement, oil fired hot  
water heat with summer and winter hookup,  
two wells with pressure system, fully insulated,  
storm window and doors, summer house.

Frame bank barn with 72'x56' extension, 78  
Show Ease stalls, 2" stainless steel pipeline,  
7 1/2 H.P. milker pump, 1,000 gal. Girton tank,  
compressor, dar-kool heat recovery, 400 amp.  
double throw switch, controlled fans, barn  
cleaner, plunger hydro. Ram manure system,  
38'x80' manure storage shed, 16'x60' concrete  
stave silo with star line unloader, 20'x70'  
concrete stave with badger drive ring, 36'x48'  
VIP heifer barn with head gates, 72'x48' free  
stall barn with bunk feeder, 8 1/2 ton chore time  
bin with flexible auger, 5,000 bushel ear corn  
storage. Three car garage, concrete floor,  
overhead doors with attached four bay open  
front equipment shed. Ten percent down day of  
sale, balance on or before February 28, 1987.  
Open for inspection Saturday, September 20 &  
27 from 2:00-4:00 p.m. or for appointment call  
717-786-3598.

AUCTIONEERS NOTE: Buyer will have op-  
portunity to rent 60 additional acres.

Terms by:

**EARL & MARIAN NEFF**

AUCTIONEERS:  
Robert E. &  
Jeffrey R. Martin  
656-7770  
AU000580L  
Frank Steller  
James N. Clymer- Attorney

## Pa. All-American Invitational

## BROWN SWISS SALE

SEPTEMBER 22 -  
7:00 P.M.  
Farm Show Complex  
Small Arena

### 30 Head Quality Brown Swiss Sell

11 Fresh Cows or Springers  
7 Project Calves

8 Yearlings  
4 Mature Cows

3 From "EX" Dams  
4 More with EX Gr Dams  
+ 1 All-American Gr  
Dam that has 2x over  
1,000F  
12 VG Dams

8 Dams have records  
over 20,000M up to  
25,000M 1,000F  
16 Dams have records  
over 700F  
5 Dams have records  
over 800F

1 Dam has record over  
967F  
1 Dam has record over  
1000F  
3 Gr.Dams have records  
over 1,000F

Dean & Brenda Daubert  
JOHNNY D 2 YR. OLD  
Fresh in July  
Gr dam 20 127M 859F next Dam  
2 EX and 2x over 21 000M

David Ketner  
JUBILATION  
Fresh 2 Yr Old  
Dam B King dtr with 48% F  
Gr dam VG 88 EX MS 17 976M  
4 7857F

Joseph Irons  
3 YR. OLD IMPROVER  
Due 11 25 to Titan  
Dam VG 86 and 3x over 17 000M

Mark Gieron  
JUBILATION BRED HEIFER  
Due in Feb  
Dam Big Fancy Talisman dtr  
Gr dam 4 EX Elite Cow  
26 000M 4 0% 1 047F

Gary Lee Mase  
GENESIS SR. YRLG  
Bred to Babaray  
Dam 2 EX 22 647M 879F  
Gr Dam has 6 2 28 561M 1 057F

Granddaughter Sells  
Wayne E Sinker  
TALISMAN JR. YRLG  
Bred to Simon  
Dam is VG 86 ES Stretchy Billy  
Gr dam 2 EX All Am 1977 5 yr  
27760 3 9 1080F

James & Rita Kennedy  
3 YR. OLD B. KING  
Bred to Regal  
Dam VG 87 23 453M 4 0% 967F

Blair Yurkann  
5 YR. OLD IMPROVER  
Who has 16 020M 645F  
Due sale time to Masterkey

Jeffrey Stainer  
BALISON SUMMER YRLG  
Dam VG 89 M Stretch 5 0 over  
25 000M 1 000F

Brian Sherman  
FANCY 3 YR OLD BALISON  
Sells Fresh  
Dam 2 yr 16 410M 5 0% F Also  
Selling A Classic 2 yr old milking  
50 lb/day Dam VG 87 18 120M  
746F

Richard Wenger  
A VG-85 GALAXY  
Due 10 3 to Macho 2 10 14 646M  
4 5% F 655F Dam VG 87 Del with  
17 472M 4 4% F 760F

Donald Cole  
JOHNNY D SR. CALF  
Dam VG 85 Toro dtr 2 2  
17 955M 765F Gr dam 2 EX  
21 379M 849F

Leonard Queitzech  
DIPLOMAT SUMMER YRLG  
Dam Performer daughter with 2  
yr 5 333M 637F

Kerry Boyd  
MASTERKEY JR CALF  
Dam Telstar with 20 151M 743F  
CI +655M +25F Gr dam 84 pt  
Delegate with 21 297M 799F

William Daubert  
BIG STRONG 3 YR OLD  
Improver Dtr  
1 11 16 495M 627F  
Sells Fresh Dam 17 271M 684F

Mark Gieron  
Ron & Hilda Moore  
IN YRLG. BY PROUD BENJAMIN  
Dam 2 EX Elite Cow

Don & Carl Trimble  
JUBILATION  
Bred to Target  
Bred to Target due in Feb Dam  
A VG 87 Beautician dtr. with 2  
yr 1 000M 760F

Janet Irons  
NORVIC TELSTAR DTR  
Due sale time to Elegant Paul  
Dam 18 350M 790F

Gary Mase  
JOHANN STYLISH SR CALF  
Dam Fancy Jubilant 2 yr old  
Gr dam VG 88 with 24118M 895F

Donald Cole  
JOHNNY D SR CALF  
Dam VG 87 Improver with  
16 294M 630F

Teressa Irons Dixon  
BIG B KING DTR  
Due in Oct to Elegant Pau Dam  
12 638M 4 7% F 595F

Dean & Brenda Daubert  
B KING SR CALF  
Dam VG 85 Toro dtr 2 2  
17 955M 765F Gr dam 2 EX  
21 379M 849F

Lloyd Lohr  
SENDING 2 BIG BRED HEIFERS  
Both due at sale time to Rapture  
El Regal

Sale Managed by PA Brown Swiss Assn.  
For Catalogs Contact: Dean Daubert  
RD2, Box 269, Bernville, PA 19508 Phone: 215-488-6508