

## Public Auction Register

Closing Date Monday 5:00 P.M.  
of each week's publication

TUES. SEPT. 23 - 4PM  
Antiques, Bottle  
Collection, HH. 110  
Washington St.,  
Strasburg, Lanc. Co., PA.  
Terms by: Randy & Audrey  
Long, T. Glenn & Timothy  
G. Horst, Aucts.

TUES. SEPT. 23 - 7PM  
Special Fall Feeder Cattle  
& Feeder Pig Sale. At the  
Carlisle Livestock Market,  
Inc. Exit 12 off I-81.

WED. SEPT. 24 - 9:30AM  
Antiques, HH. Just off Rt.  
322 in Brickerville, Lanc.  
Co., PA. Approx. 1/4 mi. E.  
of Rt. 501 & Rt. 322 in-  
tersection. By: Beatrice

Eckman, T. Glenn &  
Timothy G. Horst, Aucts.

WED. SEPT. 24 - 10AM  
Heavy Eq. 55 Sipe Rd.,  
Etters, PA.  
Harrisburg/York Area.  
Take I-83 S. from  
Harrisburg to Exit 13,  
take 382 W., immediately  
turn left on Sipe Rd. to  
sale site. Timco Const.,  
Inc., Owners. Dick  
Crittenden Auct. Co.

WED. SEPT. 24 - 10AM  
Building Supplies.  
Millhurst Mills, Freehold,  
NJ. Dir: 3 mis. W. of  
Freehold Circle 1 block off  
Rt. 33 Southside. Peter  
Costanzo Aucts., Inc.

## TOYS WESTERN MARYLAND TOYS

### FARM TOY AUCTION AND SHOW

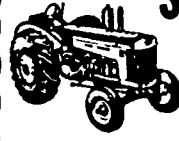
SATURDAY, OCTOBER 4, 1986

At 6 P.M. Show 9 A.M.  
HAGERSTOWN FAIRGROUNDS  
HAGERSTOWN, MARYLAND

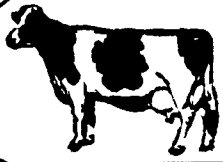
250+ Farm tractors, construction, peddle tractors, farm  
machinery, and other related toys will be sold.  
Show 9 A.M. - 5 P.M.

40+ Vendors - There's still room for a few more vendors!

Auctioneer J. Rodger Wildeson 717-263-5702  
James G. Cochran 301-432-2844



### NEW HOLLAND SALES STABLES, INC.



Located 12 Miles East of Lancaster, Pa,  
just off Rt. 23, New Holland.  
**SPECIAL DAIRY SALE CONSIGNMENTS**  
For  
**WEDNESDAY, SEPTEMBER 24, 1986**

Herd Dispersal from Cumberland County.

32 cows in all stages of production. Some recently fresh. 6 springers due October.  
7 bred heifers, 10 small calves and open heifers.

- 1 load fresh and springer cows consigned by Norman and David Kolb.
- 1 load fresh and springer cows consigned by Merle Brenneman.
- 1 load fresh and springer cows consigned by Marvin Eshleman.
- 1 load fresh and springer cows consigned by Raymond Smucker.
- 1 load fresh and springer cows consigned by H.D. Matz.
- 1 load fresh cows consigned by Dale Hostetter.
- 1 load fresh cows consigned by Alfred Albright.

For More Information Contact:

Abe Diffenbach  
717-354-4341

Norman Kolb  
717-397-5538

## PUBLIC SALE OF FARM EQUIPMENT, HOUSEHOLD GOODS AND CATTLE SATURDAY, OCT. 4, 1986 10:00 A.M.

LOCATION: Cumberland Co., Pa.- Traveling I-81 take Exit 12.  
Follow Rt. 465 South to Alexander Spring Rd. Turn right and  
follow approx. 1/2 mile to sale on right. Sale signs posted day of  
sale.

### FARM EQUIPMENT

John Deere A gas tractor; M.H. 444 gas tractor; 2 row Oliver corn planter  
(3 pt. hitch); JD side delivery rake; JD grain drill; cultipacker; 2 section  
harrow; flat bed wagon; 2 3 furrow disc plows; fence stretchers; 2 work  
benches; fencer; wagon load of misc. items.

Vehicles- 1971 Jeep V-6; 1971 Jeep V-6 engine (as is); 1969 Ford station  
wagon (as is); Corvair engine; misc. Corvair parts; automobile parts;  
used tires.

### HOUSEHOLD GOODS

Record player; coffee table; dining room table; porch chair; Apt. size  
Magic Chef refrigerator; Misc. dishes & glassware.

### CATTLE & HORSE

5 yr. old mare- broke to drive; 6 steers- approx. 200 to 225 lbs.

Sale by:

**ROGER & HELEN HOWE**  
Alex. Spring Rd.  
Carlisle, Pa.  
Ph. 249-7503

Auctioneers:

Melvin Sensenig 776-5054

Lamar Sensenig 532-9160

Lic. #AU-001803-L

Clerks: Eberly & Weaver

Terms: Cash or good check

I.D. Required

Lunch Stand Reserved-

Not Responsible For Accidents

## FARMER LIQUIDATION AND

### CONSIGNMENT SALE JOHN MCGILL EQUIPMENT

MC GILL EQUIPMENT, R.D. 3, BOX 485-C  
MT. PLEASANT, PA 15666  
PHONE: Office (412) 547-1851  
or Garage (412) 547-8138

Just off Route 119 at Scottdale Exit -  
left at Long John Silvers

SATURDAY, SEPT. 27, 1986

New Tools Starting At 9:30 a.m.

Machinery Starting At 11:00 a.m.

Farmer Dallas McCune Will Be Selling  
His Machinery Around 1:00 p.m.

25 TRACTORS: John Deere, Farmall, Ford,  
Oliver, Massey Ferguson, David Brown, Allis  
Chalmers, Motor Bikes and Lawn Mowers.

FARM EQUIPMENT: Mowers, Corn  
Pickers, Rakes, Haybines, Round Baler,  
Vermeer Balers, Rotary Mowers, Blades,  
Combines, Plows, Discs, Harrows, Corn  
Planters, Grain Drills, Gravity Boxes, Manure  
Spreaders, Hammermills, Forks, Sprayers,  
Elevators, High Lifts, Chisel Plows, Forage  
Harvesters, Hay Wagon;

NEW Brush Hog, Blades, Post Digger, Rock  
Rake, 3 pt. Disc, Spinner Seeders. All types of  
Farm Equipment.

Some industrial equipment expected. Lots of  
miscellaneous items.

Items listed may change due to daily  
business.

FARMERS AND DEALERS: Bring in your  
equipment to this sale. All Consignments  
welcome!

AUCTIONEERS:

Edgar Bohrer, Gene McGill

Lunch at Sale

Not responsible for accidents.

## PUBLIC SALE

OF REAL ESTATE  
AND PERSONAL PROPERTY  
SATURDAY, SEPT. 27, 1986

TIME: 12:30 P.M.

8 Mi. West of Gettysburg, Pa., Adams Co.  
Will be held at the old mill, north end of  
Orrtanna on Main Street next to Knouse  
Foods. Watch for sale signs.

REAL ESTATE

At 2:30 P.M.

Lot located in Highland Township consist-  
ing of approximately 1.5 acres, 171 ft.  
frontage and depth of 260 ft. Property  
containing 3 story mill 30x60, with water  
wheel in basement and grinding stone  
unit still in mill. 5 room mill house, needs  
repair, and 2 room cottage; 2 wells and  
sewer going through property, also trout  
stream running through property.  
For inspection on mill call 642-8677, by  
appointment only.

### PERSONAL PROPERTY

600 Ford tractor; 3 pt. 6 ft. rotary mower; 3 pt.  
8 ft. disc; 3 pt. weeder; NI 4 bar side rake on  
steel; 1952 GMC 1 ton truck with 500 gal. sewer  
tank and pump; 1965 Corvair convertible runs,  
needs restored; single row corn planter; 5 ton  
floor jack; small electric cement mixer; 30 hp.  
Leroy power unit; lawn tractor cart; small  
orchard & garden sprayer 30 gal. tank, like  
new; sod cutter; power washer; metal power  
ban saw, like new; cider mill press; complete  
broom making outfit, broom corn; electric ball  
pitcher; 1 1/2 hp gas motor; 5 hp gas motor  
water cooled; 2 butchering kettles; old shovel  
plow; Lawn sweeper; forced hot air furnace;  
air conditioner for R.V.; lavatory; bath tub;  
laundry tub; lawn mowers; snow moble; tape  
player; cash register; metal office desk; van  
seats; sofa; wringer washer; 20 in. gas stove;  
40 in. electric stove; Quasar VCR; Sears  
dishwasher, like new; old horse saddles;  
magnetic sign maker; rubber tire  
wheelbarrow; windows; lot of small tools,  
shovels etc.; 400 ft. dry cedar lumber; 100 ft.  
dry walnut lumber; other lumber; misc. items  
not mention.

INSPECTION OF PERSONAL PROPERTY  
SALE DAY ONLY:

TERMS OF REAL ESTATE: 20% Down at  
time of sale - Balance on or before 30 days -  
Other terms at sale.

TERMS OF PERSONAL PROPERTY: Cash,  
must have drivers license for bidding No.  
Not responsible for accidents.

AUCTIONEER: D. Edwin Benner

PA License No. AU000582

CLERKS: Susan Benner & Rodney Wolf

Refreshment rights reserved

## PUBLIC AUCTION

Located 5 miles west of Cham-  
bersburg, PA and 1 1/2 miles east of St.  
Thomas, PA on Route 30.

FRIDAY EVENING,  
SEPTEMBER 26, 1986  
At 7:00 P.M.



60 Head of Registered and High  
Grade

Holstein Dairy Cattle 60

Consisting of 20 fresh in past 60 days; 10 dry  
cows; balance in different stages of lactation.  
This is a good young herd including 20 first calf  
heifers, well uddered, good production & plenty  
of dairy quality.

40 Registered animals such as Triple Threat,  
Very, Molly Chief, Gernini, Penn State Ivanhoe  
Star, Legacy, Krone, & Elevation Chief Elmer.

Featuring such cows & heifers:

A good plus Valiant daughter w/a 2 yr. old  
record of 19,875 M. & 645 fat. Her Elevation  
daughter also sells.

A 3 yr. old Sexation w/a 2 yr. old record of  
19,000.

Another 3 yr. old Sexation w/a 2 yr. old  
record of 16,800 M & 580 fat.

A Betty Chief dtr. due to Joe in Nov.

A GP Elmer dtr., just fresh

A Penn State Ivanhoe Star Dtr.

A Sexation heifer due by sale date.

A Chairman dtr.

A Sterk R.A. Ijon heifer bred to Joe.

2 1/2 yr. old son of Valiant herd sire also sells.

Bangs & T.B. tested within 30 days for in-  
terstate shipment. Sale held in tent - Loading  
chute available.

TERMS: Cash - not responsible for accidents

**GREGORY A. MELLOTT**

Phone (717) 369-2650

AUCTIONEER: Robert C. Mullendore

AU-000644-L

CLERK: C.L. Metz

PEDIGREES: Merle Woodring

Lunch Rights Reserved

## FRED BURLETON DISPERSAL

Skaneateles, New York (Onondaga  
Co.)



FRIDAY,  
SEPTEMBER 26, 1986  
11:30 A.M.

Sale to be held on the farm on Rt. #41 -  
10 miles south of Skaneateles & 14 miles  
north of Homer (Exit #12 off I-81).

159 - REGISTERED & HI-GRADE  
HOLSTEINS - 159

86 Mature Cows (56 Registered & 30 Grade)  
of which 16 are fresh; 20 handling or springing;  
4 due Jan.; 12 due Feb.; 10 March; p 4 April;  
Balance in all stages. Most all of the heifers are  
Reg. 14 super Bred Heifers (9 handling or  
springing - 5 short bred); 25 super Breeding  
size heifers; 8 short yearlings; 13 heifers (4 to 9  
mos. & Vacc.); 11 started Calves; 2 good  
Registered Service Bulls. This real good  
homebred herd presently has 15,000 RHA &  
3.7% fat. Records to 25,000 milk. 11 head have  
over 100,000 lbs. lifetime; over 70% of herd  
have dams from 100,000 to 160,000 lifetime.  
Udders, size, and condition the way you like  
them. Always used good ABS & Eastern Sires,  
Sires represented: Frosty, Willow, Strephon,  
Jupiter, Bootmaker, Marvex, Cavalier,  
Astronaut, and Barrett, etc. On DHIA Test for  
many years. They have pregnancy examined,  
Blood & TB Tested, and are eligible for im-  
mediate interstate shipment day of sale.  
Catalogs at ringside. A real good herd to buy  
replacements from.

### MACHINERY

Very sharp Ford 4000 diesel Tractor, 16.9x30  
Rubber, has 772 Ford front end loader; 2  
Buckets; 2 Manure Spreaders (N.H. 675 tan-  
dem Axle & J.D. 54), both have hyd. Endgate;  
(2) 70 lb. universal Milkers; 14" Jamesway  
Volumatic III Silo Unloader w/Ring Drive; 5  
Patz Blue Feed Carts; 3 Wic Grain Carts; J.D.  
A-18 Power Washer.

P.S. - A real good dispersal! Cows sell at  
12:00 noon.

TERMS - Cash or good checks w/Proper ID

Owner **FRED BURLETON**  
315-673-3997

MEL MANASSE

Sales Manager & Auctioneer

Whitney Point, New York

607-692-4540 or toll free

NYS 1-800-MANASSE

Lunch Available