

Livestock market and auction news

Shippensburg Wholesale Produce Auction

(Leinbach's)
Shippensburg, PA
Tuesday, Sept. 11, 12, 15 & 16
Report Supplied by Auction
Price quotes are only #1 and Firm Produce.
Apples 3.50-4.20 1/2 bu.
Broccoli 5.00-11.25 1 1/9 bu.
Cabbage 3.75-7.75 50 lb. bag.
Cantalopes .20-.70 ea.
Cauliflower 1.75 ea.
Corn (white) .90-2.35 doz.; (Yellow) .60-1.60 doz.
Cucumbers 3.75-6.20 1 1/9 bu.
Eggplant 2.10-4.50 1 1/9 bu.
Gourds 3.00-7.75 1/2 bu.
Grapes 3.25-5.35 1/2 bu.
Honeydews .50-.80 ea.
Indian Corn .75-1.75 bunch.
Lima Beans 11.75-22.00 1 1/9 bu.
Peaches 3.00-5.25 1/2 bu.
Pears 2.50-3.25 1/2 bu.
Peppers lg. bell- 5.25-6.50 1 1/9 bu.; md. bell 4.00-5.25.
Plums 3.25-6.50 1/2 bu.
Potatoes 3.75-4.25 50 lb.; 2.00-2.50 20 lb.; .90-.95 10 lb.
Pumpkins (neck) .30-1.10 ea.; (face) .35-2.90 ea.
String Beans 5.00-9.25 1/2 bu.
Sweet Potatoes 3.50-4.00 1/2 bu.
Tomatoes lg. 5.00-12.50 25 lb.; md. 4.50-11.25 25 lb.
Watermelon .04-10 lbs.
Zucchini Squash 4.00-6.25 1/2 bu.

Omaha Weekly

Thursday, Sept. 18
Report Supplied by USDA
Slaughter steers and heifers on Wednesday regained some of Monday and Tuesday's decline to close weak to mostly .50 lower than last week's levels. Packers were quite cautious starting the week in anticipation of a bearish cattle on feed report. This, coupled with a downturn in carcass beef prices were the primary factors for early week decline. However, most packers were in need of cattle for current slaughter needs and by late Tuesday, a very good packer demand was responsible for recovering early week downturns.
Slaughter cows 1.00-2.00 higher than last week, slaughter bulls steady.
Estimated 5 day receipts this week 6,800 compared to actuals last week of 5,737 and last year of 6,823. Slaughter steers accounted for 30 percent of receipts this week; slaughter heifers 30 percent

slaughter cows 8 percent; feeder cattle 31 percent.

SLAUGHTER STEERS: Closing sales choice 2-4 1075-1300 lbs. **59.50-61.00** Mixed good and choice 2-3 1050-1200 lbs. 58.50-59.50.

SLAUGHTER HEIFERS: Closing sales choice 2-4 950-1100 lbs. 58.50-60.00. Mixed good and choice 2-3 925-1050 lbs. 56.50-58.50.

Average of LS 214 detailed price quotations for choice 900-1100 lb. slaughter steers this week 59.25, 1100-1300 lbs. 60.25. Average cost of all slaughter steers this week 59.25, average weight 1175 lbs. compared to 60.01 and 1170 lbs. last week. Average cost of all slaughter heifers this week 58.87, average weight 1049 lbs. compared to 59.22 and 1048 lbs. last week.

SLAUGHTER COWS: Breaking utility and commercial 2-4 37.50-41.50, high dressing to 44.50. Cutter and boning utility 1-3 38.00-43.00. Canner and low cutter 35.50-38.00.

SLAUGHTER BULLS: 1-2 1500-2100 lbs. 45.25-49.25.

Leola Produce Auction

Leola, PA
Tuesday, Sept. 16, 1986
Report Supplied by Auction
Due to zoning restriction, we sell Lancaster Co. brand produce only.
Apples: Red Delicious 3" & larger 7.00-10.50 bu.; Red Delicious 2 1/2" & larger 4.50-6.00 bu.; Yellow Delicious 4.50-6.00 bu.
Broccoli: 3.50-6.50 (mostly 12 and 14 ct.)
Cabbage: .25-.38 hd.; 4.75-5.25 bu.
Cauliflower: .50-.75 hd.
Corn: (white) .65-1.00 doz.
Cucumbers: 6.00-10.00 1 1/9 bu.
Eggplant: 3.25-6.00 1 1/9 bu.
Gourds: 15.00-20.00 1 1/9 bu., waxed and assorted.
Indian Corn: .65-.90 bunch (lg.); .55-.75 bunch (sm. Indian Fingers)
Lima Beans: 14.00-20.00 1 1/9 bu.
Peaches: 7.00-8.50 1/2 bu. (lg.); 3.50-5.50 1/2 bu. (sm.-md.)
Peppers: (green lg.) 6.00-7.00 1 1/9 bu.; (green sm.-md.) 4.50-6.00 1 1/9 bu.
Potatoes: 3.50-4.20 (50 lb. #1) (lg. neck) 1.00-2.50 ea.; (sm. neck) .50-1.00.
Pumpkins: (face lg.) 1.00-2.15 ea.; (face sm.-md.) .40-.85 ea.; Jack Be Little, ornamental 25.00-30.00 bu.
Radishes: 3.00-6.00 30 bunch per box.

Red Beets: 5.00-8.00 bunch 15 ct.
String Beans: (green) 12.00-20.00 1 1/9 bu.; (yellow) 10.00-15.00.
Tomatoes: (cherry) 4.25-5.00 12 pt. flat; (lg.) 7.00-12.00 25#; (sm.-md.) 4.00-8.50 25#.
Turnips: 5.00-6.00 1 1/9 bu.
Zucchini: 2.50-5.50 1/2 bu. green; 7.00-9.00 1/2 bu. golden.

Joliet Weekly

Thursday, Sept. 18
Report supplied by USDA
Sales this week 660; last week 655; a year ago 1,132. Trading slow to moderate for the week. Slaughter Steers and Heifers ended the week mostly steady.
SLAUGHTER STEERS Choice 2-4 1100-1300# 61.00-62.75; two loads 63.50. Mixed Good and Choice 2-3 1050-1200# 59.50-60.75.
SLAUGHTER HEIFERS: Choice 2-4 1000-1050# 60.00-61.00; mixed good and choice 2-3 900-1050# 57.00-59.00.

Solanco Hogs

(Continued from Page A30)
Group C
1 Troy Landis 2 Matt Weik 3 Dannel Hess
Champion Light Heavy
Scott Wagner
Reserve Champion
Jim Landis
Heavyweight Division
Group A
1 Beth Kauffman 2 Keith Miller 3 Mike Phillips
Group B
1 Dannel Hess 2 Matt Weik 3 Troy Landis
Champion Heavyweight
Beth Kauffman
Reserve Champion
Dannel Hess
Grand Champion Hog
Beth Kauffman
Reserve Grand Champion
Rob Rohrer
Junior Fitting
1 Mike Phillips 2 Kyle Wenger 3 Ryan Rohrer
Junior Showmanship
1 Amy Martin 2 Mike Phillips 3 Ryan Rohrer
Senior Fitting
1 Keith Miller 2 Steve Wagner 3 Dannel Hess
Senior Showmanship
1 Steve Wagner 2 Dannel Herr 3 Rob Rohrer

Solanco Steers

(Continued from Page A30)
4-H and FFA shows, as well as showmanship and fitting results.
FFA Steers
Lightweight
1 Tracey Landis 2 Jeff Craig 3 Larry Killian
Mediumweight
1 Fritz Frey 2 Tracey Landis 3 Fritz Frey
Heavyweight
1 Jeff Byers 2 Anna Marie Frey 3 Mike Craig
Champion FFA Steer
Fritz Frey
Reserve Champion
Tracey Landis
4-H Steers
Lightweight
1 Anna Marie Frey 2 Tracey Landis 3 Jeff Craig
Mediumweight
1 Jimmy Landis 2 Fritz Frey, 3 Terry Craig
Heavyweight
1 Stacey Linton 2 Heidi Frey 3 Brad Linton
Champion 4-H Steer
Jimmy Landis
Reserve Champion

Leesport Livestock

Leesport, PA
Wednesday, Sept. 17, 1986
Report Supplied by PDA
CATTLE 313. Supply included 45 feeder cattle... Compared with last Wednesday's market: Slaughter steers grading Choice .50 to \$1.50 higher; Cows mostly \$1 higher. Few High Choice slaughter steers 64.00-66.50, Choice 1050-1350 lbs. 60.00-66.25, Good 52.00-60.00; few Choice holsteins 51.75-55.75, few Good 48.50-50.75, few Standard 42.75-46.25. Few Choice slaughter heifers 54.10-61.50, few Good 49.25-52.25. Breaking Utility and Commercial slaughter cows 37.25-41.00, few 42.00, Cutter and Boning Utility 35.25-39.25, Canner and Low Cutter 32.25-35.50, Shells down to 30.00. Few Good slaughter bullocks 48.25-53.25. Yield Grade No. 1, 1050-1600 lbs. slaughter bulls 46.75-54.75, few No. 2, 860-1100 lbs. 39.75-45.50. Feeder Cattle: Medium Frame No.

1, 390-650 lbs. steers 58.50-68.50. One Lot Medium Frame No. 1, 590 lbs. bulls 60.00.
CALVES 161. Few Choice 72.00-94.00, few Good 60.00-66.00, Standard and Good 70-100 lbs. 40.00-46.00, Utility 50-75 lbs. 30.00-35.00. Farm Calves: Holstein bulls 90-130 lbs. 50.00-85.00. Few Beef Cross bulls and heifers 85-100 lbs. 87.00-100.00.
HOGS 405. Barrows and gilts \$1 lower. Few US No. 1-2 225-240 lbs. 61.75-63.25, 1-3 215-245 lbs. 58.50-60.50, 2-4 235-275 lbs. 56.50-58.50. US No. 1-3 250-400 lbs. sows 51.50-53.50, 400-700 lbs. 53.00-57.00. Boars 45.00-47.50.
FEEDER PIGS 213. US No. 1-3 25-50 lbs. feeder pigs 127.00-152.00, few 1-3 55-70 lbs. 69.00-104.00 — all per hundredweight.
SHEEP 29. Choice 70-90 lbs. spring slaughter lambs 67.00-79.00. Slaughter ewes 12.00-30.00.
GOATS 27. Large kids 20.00-34.00 — all per head.



Reserve hog show honors went to Rob Rohrer of Nottingham.

Stacey Linton
Grand Champion Steer
Fritz Frey
Reserve Grand Champion
Jimmy Landis
Junior Showmanship
1 Jeff Byers 2 Terry Craig 3 Tim Craig
Senior Showmanship
1 Tracey Landis 2 Anna Marie Frey 3 Jimmy Landis



The harder you look at production costs, the more you'll appreciate 2nd Century Dairy Products.

Whether cows are dry, just freshened or in full production, our high-quality line of pelleted protein-vitamin-mineral concentrates can help them utilize your grain and forage most efficiently. 2nd Century Dri-trate®, Fresh-trate® and Mintrate® products can pay off for you in total herd performance and profitability. Our century-old commitment to quality and service backs 2nd Century Dairy Products.

Perry Meinnert
21 Lancaster Estates
Mt. Joy, PA 17552

717-653-4404



Pete Croust
717-738-1326
557 Sunnybrook Dr.
Apt. 1 RR4
Ephrata, PA 17522

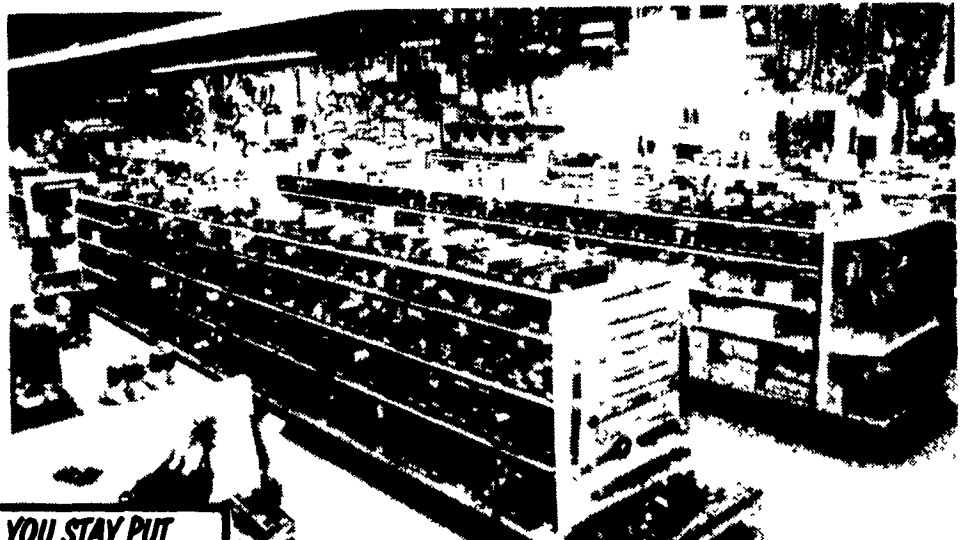
Doug Shaab
717-295-5320
608 W Chestnut St
Lancaster, PA 17603

HOOPER
C.B. HOOPER & SON INC
INTERCOURSE, PA
(717) 768-8231

The Saving Place

HOOPER
HOOPER EQUIPMENT INC
MIDDLETOWN, DE
(302) 378-9555

WE SHIP PARTS DAILY
Via UPS - PPSH - BUS - AIR FREIGHT, ETC.



YOU STAY PUT
Pick Up Your Phone And Place Your Parts Order With Us

CALL US...
It Could Be We Have It

Case
Authorized UPS Station