

# Cumberland Co. DHIA

(Continued from Page D18)

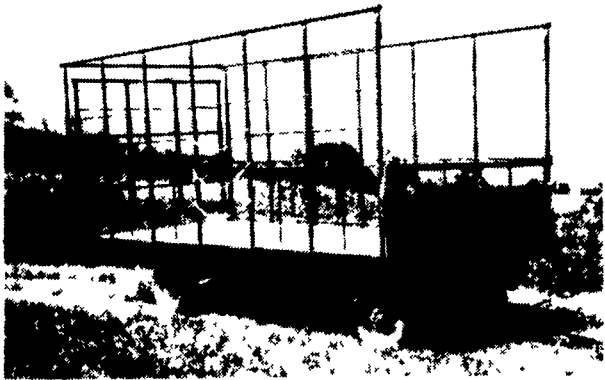
Jack C Rolar				
Jackie	7	22,187	3 5	770
12	7	18,102	4 2	767
Paul O Dyarman				
Trixie	3	15,003	4 5	675
Lorrie	7	17,276	3 8	652
Harry & Paul Hoch				
Beauty	3	15,357	4 4	677
J Glenn Glesner				
33	4	17,685	4 2	741
David E Gettle				
Eloise	5	24,757	3 7	924
Fred B McGillvray				
Elsa	3	21,540	3 3	715
Twiligh	2	20,803	3 3	685
Blizard	6	19,107	3 4	658
J Shephard Wolff				
Betsy	3	24,312	3 4	826
Jo	5	21,139	3 4	710
Herbert B Shughart				
Kiwi	4	21,804	3 3	713
Elsa	7	21,952	3 0	659
Frank J Yost				
Leah	3	16,512	4 3	704
Aschombe Dover Dairy				
R 457	3	20,086	4 2	844
R 405	6	20,473	3 7	755
R 396	6	18,927	3 9	739
R 429	3	18,827	3 8	716
139	6	23,449	3 0	714
R 322	2	18,841	3 8	711
R 317	2	20,021	3 3	658
303	2	18,871	3 5	652
Leroy Showaker & Son				
Music	4	20,436	4 6	938
Nora	7	19,481	4 1	793
Manda	5	20,181	3 9	777

John F Stamy III				
24	7	18,214	3 7	668
178	3	19,620	3 3	655
Carl Kelso Jr				
25	7	19,311	3 8	725
102	6	19,124	3 5	678
139	5	24,427	2 8	677
Leroy Chestnut				
7	3	19,439	3 5	671
Sandrod Farms				
2	5	18,792	4 1	770
21	7	18,014	4 1	734
43	5	22,919	3 2	733
76	3	18,660	3 6	664
Berkheimer Farms				
5	5	19,689	4 1	799
45	4	17,995	4 4	793
95	9	20,103	3 7	750
133	3	20,209	3 4	697
141	4	16,342	4 0	658
Glenn W Myers				
Della	3	20,296	3 9	791
Kenneth Zeigler Sons				
Tessie	8	19,584	4 4	871
Pistol	8	19,254	3 7	716
Terry	2	18,615	3 5	654
Allen B Martin				
54	3	18,998	4 3	821
39	4	23,701	3 2	762
55	3	19,815	3 5	702
48	5	20,314	3 3	662
Clifford Chamberlin				
Rose	7	18,473	3 8	697
Ann	2	17,224	3 8	663
George P Wickard				
Sally	6	24,885	3 5	879
Cotton	4	18,061	4 6	833
Vicky	5	19,646	3 5	691
Daniel L Martin Jr				
105	4	17,650	3 8	671

## Lancaster Farming Saturday, September 20, 1986-D19

J David Martin				
Maggie	3	22,690	3 2	720
Belle	6	19,454	3 3	651
Kenneth P Swartz				
Raven	4	18,260	3 9	719
Glenn Newswanger				
20	2	18,751	3 6	683
Francis R Mains #2				
32	8	20,090	3 6	715
Lamar & Carol Sensenig				
Pam	4	21,706	3 4	740
Bubbling Spring				
Bobbie	3	15,954	4 2	664
Amos Z Sauder				
Rosmary	3	19,492	3 8	738
Highland Vue Farms				
Darcie	3	19,496	4 5	882
Lucille	5	21,236	3 8	797
Angie	4	20,186	3 5	709
Ann	4	16,692	4 2	697
Babe	4	14,318	4 9	696
Sheba	4	19,042	3 4	656
Lawrence R Martin				
Hazel	6	17,066	3 9	670
Sugar	5	16,223	4 0	652
Sto-Ebe Farm				
4	7	16,081	4 3	691
Bradley C Berdel				
37	4	21,270	3 5	734
William L McCulloch				
312	4	14,389	4 7	682
Alvin M Martin				
Candy	4	20,681	3 6	746
Cristy	1	21,882	3 3	730
32	6	18,438	3 7	690
51	2	20,282	3 4	682
67	5	19,372	3 5	671
27	2	19,242	3 4	657
89	3	17,317	3 8	657
Steven P Kline				
Lilly	9	16,695	4 2	706
Pam	6	17,456	4 0	692
Cindy	5	18,855	3 4	650
M Thomas Sheaffer				
Matt	6	18,293	3 7	685
#Madora	4	16,205	4 2	678
Libby	4	18,174	3 6	662
Donald M Leatherman				
Emmy	2	20,054	3 5	709
Lee A Hoover Jr				
Sarah	3	22,675	3 8	872
Robert E Keefer				
206	5	19,845	3 8	756
196	6	20,801	3 4	706
141	3	20,752	3 3	675

## BEST BUY of the YEAR



- 6" Steel Main Beam
- 2" Vertical Tubing Drilled so that the 1" Horizontal tubing extends Full Length of Wagon
- Front-Side and Rear Loading and Unloading
- 2x8 Pressure Treated Lumber Floor
- 2x6 Oak Cross Beams
- Beds are 8' wide, available in 16, 18 or 21' lengths. Racks are 90" high.
- NEW FEATURE: 6" Channel across back for pushing wagon without damaging bed.

### FOR FURTHER INFORMATION, CALL YOUR LOCAL DEALER:

**LOST CREEK IMPLEMENT**  
Oakland Mill, PA  
717-463-2161

**MELROSE FARM SERVICE**  
Greencastle, PA  
717-597-3138

**KELLER BROS.**  
Lebanon, PA  
717-949-6501

**DUNKLE & GREIB**  
Mill Hall, PA  
717-726-3115

**WALTER G. COALE, INC.**  
Churchville, MD  
301-734-7722

**TOBIAS EQUIPMENT CO., INC.**  
Halifax, PA  
717-362-3132

**NORTHEAST DISTRIBUTING**  
West Clifford, Pa.  
717-222-9020

**VALLEY IMPLEMENT SALES**  
Harrisonburg, VA  
703-434-9961

**CHAMBERSBURG FARM SUPPLY**  
Chambersburg, PA  
717-264-3533

**OXFORD GREENLINE, INC.**  
Oxford, PA  
215-932-2753

**PAUL SHOVER'S, INC.**  
Loysville, PA  
717-789-3117

**A.B.C. GROFF**  
New Holland, PA  
717-354-4731

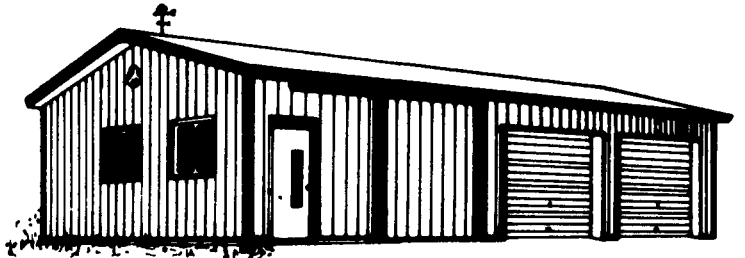
**CARLISLE FARM SERVICE**  
Carlisle, PA  
77-243-4419

**CLARK'S FARM SUPPLY**  
Williamsport, PA  
717-494-0060

## MORTON BUILDINGS

Since 1903

- Horse Barns
- Riding Arenas
- Garages
- Warehouses
- Offices
- Shops
- Equipment Storage
- Aircraft Hangars



For literature call Morton, IL

**800/447-7436**

Illinois customers call 800/426-6686

## MORTON BUILDINGS, INC.



WEATHER VANE  
with every  
building  
purchased

1185 York Rd  
Gettysburg, PA 17325  
Rd #10, Box 76  
Meadville, PA 16335  
State College, Box 361  
Centre Hall, PA 16828  
Box 126  
Phillipsburg, NJ 08865  
1918 Industrial Drive  
Culpeper, VA 22701  
P O Box 187  
Harrington, DE 19952

### MORTON BUILDINGS

Call or write today to arrange to see and hear more reasons why you should own a Morton Building.

Ph 717/334-2168

Ph 814/336-5083

Ph 814/364-9500

Ph 201/454-7900

Ph 703/825-3633

Ph 302/396-8100

Manufactured By

## CLW MANUFACTURING, INC.

R.D. #2, Box 8  
Newburg, Pa. 17240  
717-423-6794