

**FOR SALE**

- (2) 250 bu. J&M bin wagons, on 8 ton easy trail gears, used once, \$1,250 each
- (1) 300 bu. McCurdy bin wagon w/new fert. auger, on 10 ton gear, \$1,900
- (1) 7"x41' Westfield PTO auger, used once, \$1,200.

717-776-7672

- 6 NI 323 Corn Pickers, very good cond. \$2650 - \$4150
- 6 NH 402 Crimpers \$500 - \$800
- 1 NH 311 Baler S.S., new w/new eng. \$7300
- 1 NH 311 Baler S.S. new, \$6,000
- 2 NH 256 Rakes, new, \$2,000
- 4 Mc PTO Corn Binder, (1 w/decals) \$600-\$1,050
- 1 NH 310 S.S. Baler, good cond. \$2,200
- 1 NI #14 Manure Spreader, on rubber, like new \$1,200

**PEQUEA MANUFACTURING**

3230 E. Gordon Rd.  
Gordonville, PA 17529  
Answering Service 717-768-3197

**TRIPLE H EQUIPMENT**

Peach Bottom, Pa.  
717-548-3775 or 717-548-2094

**Vermeer**

- (2) 605 J Auto Weave Balers (New)
- (1) 605 F Baler (Used)
- (1) 605 E Baler (Used)
- (1) 605 D Baler (Used)
- (2) 107 No-Til Drills (New)
- (1) R23 Twin Rake, Hydraulic
- (1) R8A Single Rake, Hydraulic

**Vicon NEW VICON EQUIPMENT**

- (5) KM 321 Mower Conditioners, 10' 6"
- (4) KM 281 Mower Conditioner, 9' 5"
- (3) KM 241 Mower Conditioners, 7' 10"
- (2) OM 281 Mower Conditioners
- (1) OM 241 Mower Conditioner
- (2) RC 330 Tedder Rakes
- (1) RS 310 Tedder
- (1) RS 510 Tedder, 3 Pt. Hitch
- (1) RS 610 Pull Type Tedder
- (3) TS 1002 Seeder Spreaders
- (3) LS 200M Sprayer, 21' Booms
- (4) LS 400M Sprayer, 28' Booms
- (3) LS 630M Sprayer, 28' Booms
- (1) LS 870M Sprayer
- (1) LS 1410T Sprayer
- (1) LS 1910T Sprayer
- (1) LS 1410T Sprayer, Truck Mount
- (2) 4 Wheel Finger Rakes

**NEW H&S EQUIPMENT**

- (1) Super 7+4 Forage Box, Tandem Axles
- (1) 8x18 Self Unload Bale Rack

**USED EQUIPMENT**

- JD 38 Chopper, 2 Row Head & Hay Head
- AC Forage Box
- JD FB17-7 Grain Drill
- New Idea 7' Cutter
- NI 2 Row Corn Picker, Wide Row
- Patz 16 Ft. Silo Unloader

Two IH 403 Gas Combines  
(1) Hydrostatic (1) Gear Shift  
with bean and wide row corn head  
Also extra parts  
After 6, 302-875-7007

**power pro equipment**

**SAVE! SAVE! SAVE!**  
Brand New  
**Badger BN542**  
Blower w/Magnet - One Only  
**\$1,800**

**USED EQUIPMENT**

- Bobcat 743 Diesel Skid Loader
- OMC 1700 Skid Loader, Mechanics Special ..... \$3,000
- OMC Model 320 Skid Loader
- NI 214 Spreader ..... \$500
- New BushHog 12 Ft. Disk Harrow

If You Are Looking For A Good  
Skid Steer Loader - Give Us A Call

**POWER PRO EQUIPMENT**

p.o. box 567, route 322  
milroy, pa

717-667-6504



**ZIMMERMAN**

**NEW- HEAVY DUTY FORAGE BOXES BUILT FOR YEARS OF RUGGED SERVICE**



SAVE! BUY DIRECT FROM MANUFACTURER

**SERIES HD 700**

New hydraulic head assembly is designed to be compact for low maintenance Heavy duty low speed high torque motor eliminates one step down in gear reduction

**SERIES PTO 600**

PTO unit is driven by a gear box, safety clutch, shear pin and heavy duty variable speed drive leading to 3-step down reduction apron chain

All lumber is high quality pressure treated southern yellow pine #1 dense (select) Many heavy duty features at critical areas make these forage boxes the most rugged ever built

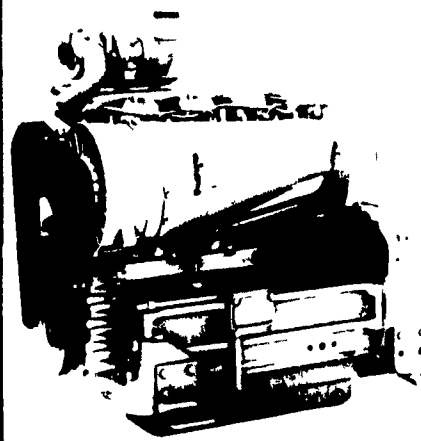
**BURKMAN MANUFACTURING**

P.O. BOX 637, EPHRATA, PA 17522  
Call Ivan Burkholder 717/354-2606  
Service And Repairs On All Makes Of Forage Boxes

**FARM EQUIPMENT**

**ADIM-SAME Diesels: Your Growing Partner**

Rugged, simple cast-iron construction that's built to last! Trouble-free air-cooling with fewer components reduces maintenance, repairs, downtime. Air-cooled internal oil spray cools critical parts, extends engine life. Fuel-efficient for low operating cost. Time-tested since 1927. More than competitively priced. DISTRIBUTOR INQUIRIES INVITED.



24 thru 160 HP

**SAME DIESEL ENGINES**



BY INTER TECH OF TAMPA INCORPORATED

6700 South Florida Ave  
Suite J  
Lakeland FL 33803

Ph (813) 646-6767  
Telex 510 801 0754

**TRACTORS**

AC 7030	AC 7010D	AC XT190D	IH 806
AC 7060	AC 200	AC 180D	JD 2010
AC 7040D	AC 210	AC D19D	MF 65G
AC 7045D	Oliver Super 77	AC D14	Case 1490
AC 7050D	AC 7000D	AC 5050D	JD 450 Crawler
AC 7020D		AC 5040D	Oliver 1650D

Used Hay Wagons

Used Batch And Continuous Flow Dryers

Used Gehl Mower Conditioner

**SPECIAL**

9 Ton Heavy Duty Tag-A-Long Trailer

USED COMBINES (LIKE NEW)

A C Models G-C-N-L-F

These Combines are in Excellent Condition

NI 708 UNI-SYSTEM, HYDRO DRIVE w/717 COMBINE, CORNHEAD & GRAINHEAD

**GRUMELLI FARM SERVICE**

Quarryville, Pa.  
717-786-7318



1500-gal. Tank Will Load in Approx. 1 1/2 Min.

Check These Outstanding Features on the SLURRY BUGGY

A liquid manure spreader that loads and unloads and has no chains, bearings, fans, augers, or moving parts that touch manure.

- ✓ Tanks are made of 5/16 thick metal
- ✓ Large air cooled vacuum pump
- ✓ Pump has not only a primary trap but also a large secondary moisture trap
- ✓ Pump has an air precleaner
- ✓ A 6 inch hydraulic operated brass valve for unloading
- ✓ Has 3 different manure spreading patterns
- ✓ Tank has a float level indicator and sight glass
- ✓ A 20 inch rear manhole for easy access to tank
- ✓ Priced at \$5 625

**Optional Features:**

- Heavy Duty tool bar with tooth spring loaded injection
- 6 inch side valve large flotation tires

Farmers rebuild your tanker with one of our new pumps (192 cfm @ 10 HG)

We have 6" and 8" Tapered brass valves for your Liquid Manure Handling Needs

\$1,275

**SLURRY BUGGY EQUIPMENT**

R. D. 2, Box 148

Ephrata, Pa. 17522

(717) 859-3869

**Eckroth Bros. Farm Equipment**

RD 2 Box 24A, New Ringgold, PA 17960

717-943-2131

7:30-5:30 Mon.-Fri. 7:30-4:00 Sat.



**USED EQUIPMENT**

**USED TRACTORS**

- MM G-900
- JD A w/cultivator
- JD Model B w/Cultivators
- Farmall H
- Case 1270
- Ford 9N
- IH 444, Gas
- IH 684, Nice
- IH 574 Diesel
- IH 354 Tractor

**NEW GEHL EQUIPMENT**

- 960 Forage Box w/roof
- 1540 Forage Blower

**USED COMBINES**

1980 Int. 1460 w/1100 hrs., excellent condition

- Int. 1440 Combine
- Int. 715 Diesel w/4 row narrow head, nice
- MF 750 w/grain head
- Int. 715, late model

**USED EQUIPMENT**

- Int. 710 5 F Auto. Reset Plow
- Int. 720 6F Plow
- Int. #56 Blower
- Int. 440 Baler w/Thrower
- 900 Badger Blower
- IH 510 16x7 Comb. Grain Drill
- NI 2 Row Narrow, Pull Type Picker w/12 Roll Husking Bed
- 13' 3 Pt. Chisel Plow
- Int. 1300 Sickle Bar Mower