

REAL ESTATE

FREE CATALOG

#56 Farms, Homes & Businesses in 15 States.
American Farm Digest
 3546 Watson Rd.
 St. Louis, MO 63139
800-325-9943

Snyder County

130 acres, 90 tillable, 3 BR home, pond, barn for steers. \$175,000.

115 acres, fruit farm, 2 homes, barn. Will subdivide.

130 acres, 105 tillable, 2 homes, barn for steers.

145 acres, 100 tillable, 12 room home, and barn.

125 acres, house, barn, and cabin. Exceptional 2 story home with stables & pasture. Very private. 4 acres. \$159,900.

Union County

56.5 Acres, 45 tillable, 2 1/2 story log home, barn, straw shed, silo and other outbuildings. Very private. \$88,900

18 acre mini farm, house, barn, workshop. Union Co. Would be ideal for nursery or horses. \$79,500.

Integrity Real Estate
 717-837-1061

WIMPLE ASSOCIATES
COBLESKILL AREA

6 YEAR OLD BARN holds 60 head and milks 48 in large ties on pipeline. Barn has 18x50 silo w/unloader, Patz cleaner and mow elevator. 5 bay machine shed and storage barn. Lots of handmade woodwork in the 5 bedroom Colonial with exposed beams INCLUDES: 60-65 Holsteins, tractor w/cab, tractor w/loader, long line of machinery for \$220,000. CALL WIMPLE'S SLOANSVILLE OFFICE: 518-875-6355

SOUTHERN NEW YORK

PERFECT HAY FARM near the Pennsylvania line has 375 acres with 220 tillable. Large stream through the pasture. Good alfalfa land. Nice 2 story home with excellent views. 20x80 pole barn with 20x60 ell. \$128,000 with 9 1/2% terms. For appt call 607-792-3355 or WIMPLE'S SLOANSVILLE OFFICE: 518-875-6355

- FREE DAIRY CATALOGUES -

SHOPPING FOR A GREAT

FAMILY DAIRY®

Well Check Your List With These Ingredients!!

- 233 acres, 207 tillable — Owner won conservation awards for land improvement.
- Excellent 66 tie stall barn w/2" pipeline & additional heifer areas (Super barn to work in).
- 20x90 Harvestore & 18x50 silos plus 2 machinery buildings.
- Extra special 4 bedroom home w/new kitchen & in immaculate condition.
- 85 head Holsteins; 50% Registered, 17,000 lb. DHIA w/over \$120,000 gross milk sales.
- Super lineup of mainly John Deere equipment w/excellent care & maintenance.
- \$325,000 for total package with everything you've been searching for in a showplace dairy farm.

M. Subik

Homestead Realty

Auriesville Road RD 1
 Fultonville, N.Y. 12072

518-922-6301

518-922-8899

NORTHERN FRANKLIN COUNTY

Hilltop setting, bi-level home w/2 fireplaces, 2 baths & many other deluxe features, terrific view of the Cumberland Valley from this 33 acre site w/tillable limestone soils, additional land available.

FRANKLIN COUNTY FARM

92 acre general farm w/limestone soils, 2 story house, bank style barn & other outbuildings, all buildings in good condition.

FRANKLIN COUNTY

93 acre farm that borders a stream, 17 acres of wooded land, house, bank style barn & outbuildings.



ERA Garman Realty

999 Lincoln Way East
 Chambersburg, PA 17201

717-264-7999

GRADE A DAIRY FARM

Franklin County, Virginia 279 acres gently rolling farm land, 154 acres crops, 42 acres pasture, 3 acres farmstead, balance wooded. Numerous dairy buildings, milk parlor 52x18' block construction, 11 Herring bone stall recently remodeled w/1,000 gal. milk tank and cooler, 2 Harvestore silos, 20x27, 20x70, 1 concrete Stave silo 20x70, 700,000 gal. manure lagoon w/gravity pump. All farm eq. and acre commercial catfish pond. 1,800 sq. ft. main dwelling built in 1975, two tenant houses. Both rented.

Priced to sell at a price well below its replacement cost. Call for many more details on this farm and others in this area.

Harris Ferguson, REALTOR

703-721-8900

Meadow Springs Land & Realty

703-483-5566

INVEST IN THE

FINGER LAKES N.Y.

The following properties in Seneca County are in the area of Seneca and Cayuga Lakes, minutes from Cornell and Ithaca College, Watkins Glen and Grapevineyards and the former SAMPSON Naval Training Base.

INVESTERS DELIGHT - 1450' lake frontage west shore Cayuga Lake & approx. 17 wooded acres undeveloped. Owner financing possible \$435,000.

COUNTRY LIVING with 18 acres & a stream running through. 4 bdrm spacious home (needs some work) & a separate rented cottage as income, large commercial type 3 bay gar & hay barn. Sellers anxious. \$65,000.

SMALL TRAILER PARK with 4 modern sites & a seller owned 1984 mobil 14x70. Village water. Development more sites available on 25 acres. Owner financing possible \$84,500.

Large 10 room vacant farmhouse (Handiman's Delight) but livable modern gar. and many farm bldgs. 15 acres, sacrifice @ \$49,500.

125 Acre SHEEP FARM in operation 100 ac. tillable, 25 woods, misc. farm bldgs. Also a like new modern 2 story 5 bedroom home, 2 baths. View of Seneca Lake financing to qualified buyer \$160,000.

INCOME PROPERTY from a modern tenant house, a 1980 14x70 rented mobil and rented farm land. You the owner occupy a modern Colonial 11 rms and enjoy an in-ground pool, 3 car garage, asphalt drive. Near golf course and both seneca & Cayuga Lakes. Owner financing possible.

Odomirok Realty

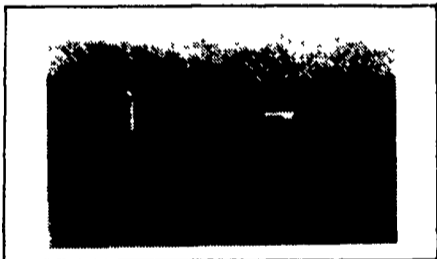
Main Street, Ovid, N.Y. 14521

607-869-2363

Virginia

101 acres of level to gently rolling fields with 60 acres in cropland 5 acres in woods and 36 acres in pasture and farmstead. Hand some two story brick house with large front porch shaded by maples. Pleasantly situated and convenient to farm buildings. Nice brook flows through pastures.

\$185,000



Contact For Further Information On This and Other Fine Virginia Farms and Properties.

MEAD ASSOCIATES

INCORPORATED
 Real Estate Services

JAMES WM. MOORE
 Accredited Farm & Land Broker
 Home 703/463-7050

G. OTIS MEAD III
 Accredited Farm & Land Broker
 Home 703/463-2740

21 North Main Street, Lexington, Virginia 24450 Telephone 703/463-7168



BUSINESS PROPERTY

For Sale by Owner

One Mile North of Shippensburg, PA
 U.S. Route 11

717-532-5511

POTTER COUNTY

• 116 Acre, hunting ground 30 acres open, balance wooded, borders 2 roads & river. Possible Owner financing \$50,000

LEHIGH COUNTY

• 100 Acre dairy farm, 80 tillable, features 90 cow free stall barn w/freshening area and bulk feeder, 36 stall milking barn w/pipeline milker, bulk tank, barn cleaner. Lovely 2 1/2 story home, large kitchen, DR, LR, laundry, 5 BR, 2 baths, full attic & basement, (2) 20x60 Harvestore silos, 20x80 concrete w/unloader. Stream & pasture, level land, \$300,000

TIOGA COUNTY

• 800 Acre Dairy Farm 400 T 2 very good, lovely homes 83 stall dairy, barn. Steel pipe line, 1000 gal tank and barn cleaner (2) 16x60 and (1) 14x40 silos with unloaders. Large heifer barn \$365,000 Full line of machinery and cattle available

• 122 Acre, 100 T dairy farm, 47 tie stalls with 24 free stalls, 800 gallon tank, barn cleaner, pipeline milker, 20x60 concrete silo with unloader, good house with kitchen, dining room, 2 living rooms, 3 bedrooms and bath \$110,000

• 126 Acre farm, 70 T, 45 pasture, balance wood land. Land only. Near above farm \$65,000

SCHUYLKILL COUNTY

• 234 acre woodland tract, joins state gamelands, borders Rt 81 & secondary road, Pine Grove area, good hunting area, call for details, \$175,000

BRADFORD COUNTY

• 5 acre Dairy Farm Modern 74 stall dairy barn Bulk tank, steel pipe line, barn cleaner, 20x32 Harvestore silo and 20x60 concrete silo. Manure storage. Modern Ranch home with 4BR's, Kit, DR, LR, Bath and Den \$145,000 Also second house available

• 500 Acre Dairy Farm, 450 tillable, features 184 freestall dairy barn, 125 stall heifer barn, double-8 milking parlor, two 1,000 gal bulk tanks, two 100' bunk feeders, three 24x60 and one 20x60 concrete silos w/unloaders, lovely 4 BR home w/kitchen, LR, FR, office, den, laundry & bath. 2nd home 3 BRs & bath. Spring fed pond & much more. Call for details, \$650,000 Cattle & machinery available

• 188 Acre, 130 T Dairy farm with large double 13 room house, 3 car garage, 86 stall barn, 1,000 gal tank, pipeline milker, barn cleaner, large machinery shed, \$165,000 Cattle & machinery available under separate contract

SUSQUEHANNA COUNTY

• 565 Acre dairy farm Features 145 stall barn, heifer barn, large machinery shed, 2 1/2 story house with kitchen dining room, living room, office family room, laundry, 3 bedrooms, 1 1/2 baths. 2nd House Modern 3 bedroom with kitchen, dining room, living room and bath. Apartment with modern kitchen, living room dining room, 3 bedrooms 1 1/2 baths. 3rd House New 2 bedroom, kitchen, living room and bath \$750,000



BERKS CO.

• 140 Acre Farm features lovely 2 1/2 story stone home, modern kitchen, dining room, living room, center hall, 4 large bedrooms & bath, large bank barn, 2 large machinery sheds, small horse barn, large storage bins, gently rolling land with pond & stream, \$460,000

• 70 Acre farm features 50,000 bird automated high rise laying house with packing room, large steer barn, corn cribs, lovely 2 1/2 story stone home with kitchen, dining room, living room, family room and 4 bedrooms, 2 baths \$550,000

OTHER FARMS AVAILABLE

Please Call and Tell Us Your Preference

PAUL M. LONGACRE

Rt. 100 Hereford, PA 18056

Ph: 215-679-5919