

New Wilmington Hay
New Wilmington, PA
Friday, Sept. 5
Report supplied by Auction
22 loads hay.
Alfalfa 80.00-100.00; Mixed Hay, st crop, 43.00-58.00; 1 at 76.00; 2nd crop 77.00-92.50; Timothy 60.00-75.00; Clover 45.00-55.00; Trefoil/Timothy, 1 load, 89.00; Ear Corn 50.00-72.00, mostly 55.00-5.00; Oats, 2 loads \$.90/bu.; Straw, 1 load, 58.00.

Dewart Hay

Dewart, PA.
Monday, Sept. 8, 1986
Report Supplied by Auction
Hay, 46.00-77.00; Straw, 1 at 42.00; Wood, 30.00-31.00 per ld.; Corn, 49.00-59.00.

Debotts Auction

Leesburg, Va.
Wednesday, Sept. 10, 1986
Report supplied by Auction
2 loads Alfalfa, 145 and 155 per ton.

Frederick Co. Hay

Buckeystown, Md.
Thursday, Sept. 11, 1986
Report Supplied by Auction
27 loads. Market steady on all grades.
Alfalfa, 11 loads, fair to good, 101.00-147.00; Alfalfa Mixed, some with moisture, 4 at 92.00-120.00; Timothy, 5 good, 117.00-133.00, 1 fair, 105.00; Clover and Timothy mix, 2 loads, 93.00-95.00; Straw, Wheat, 1 load, 90.00; Oat Straw, 12.00; Rye, 1 load, 3.00 bu.
One load Dry Sawdust, 25.00.

Chambersburg Hay

Chambersburg, PA
Thursday, Sept. 11
Report supplied by Auction
3 loads Hay. Mixed Hay, 90.00; Brome Grass, 74.00; Alfalfa Clover Mix, 112.00; Corn 61.00.

Belleville Hay

Belleville, PA
Wednesday, Sept. 10
Report supplied by Auction
10 loads Mixed Hay, 42.50-97.50; 4 loads Straw, 35.00-65.00; 5 loads Ear Corn, 55.00-65.00

F & S Hay

New Market, Va.
Tuesday, Sept. 9, 1986
Wheat Straw, \$72 per ton; Mixed Hay, \$105-150/ton. Light run but a lot of buyers.

St. Louis Cattle

Thursday, Sept. 11
Report supplied by USDA
Receipts This Week 2,900
Week Ago 2,200
Year Ago 2,800
Compared to last week's close, slaughter steers and heifers weak to .50 lower. Cows firm to 1.00 higher. Bulls steady. Slaughter supply mainly Choice steers and heifers. Around 10% cows.
SLAUGHTER STEERS: Mixed

Choice and Prime 2-4 1075-1350 lbs. 60.00-60.50, several 60.00; package 2-3 61.00; 3-4 1000-1200 lbs. 57.00-58.50. Choice 2-4 975-1350 lbs. 59.00-60.00. Mixed Good and Choice 2-3 900-1250 lbs. 57.50-59.50. Good 2-3 900-1250 lbs. 55.50-57.50. Mixed Good and Choice 2-3 1050-1350 lb. Holsteins 52.00-53.25. Mostly Good 2-3 950-1500 lbs. 46.00-51.00. Standard to Good 2-3 1100-1500 lbs. 42.50-46.00.

SLAUGHTER HEIFERS: Mixed Choice and Prime 2-4 900-1100 lbs. 58.50-59.00, load mostly Choice, few Prime 2-3 1050 lbs. 60.00; 3 to mostly 4's 850-1050 lbs. 53.50-56.00. Choice 2-4 850-1125 lbs. 57.00-58.50. Mixed Good and Choice 2-3 800-1025 lbs. 55.50-57.00. Good 2-3 750-975 lbs. 52.00-55.00.

COWS: (Closing Week Sales) Breaking Utility and Commercial 2-4 35.00-38.00. Cutter and Boning Utility 1-2 37.00-38.00. High-

yielding cutter and boning Utility 1-2 38.00-39.00, few up to 40.00. Canner and low Cutter 1-2 34.00-37.00. Shelly canner 1-2 29.00-34.00.
BULLS: YG 1-2 1050-2100 lbs. 42.00-47.00. Individual YG 1 48.00.

Wednesday's weekly sheep auction. Receipts around 600 head. Slaughter lambs 7.00-9.00 lower. Slaughter ewes scarce. Feeder lambs steady to 1.00 lower. Quality vastly improved.

SLAUGHTER LAMBS: Choice and prime shorn with no. 1-2 pelts 90-120 lbs. 62.50-64.50; 120-135 lbs. 58.00-63.00. Woolled, Choice and Prime 90-120 lbs. 60.00-64.00; Choice 61.00-61.50.

SLAUGHTER EWES: Few Cull 15.00-21.50.

FEEDER LAMBS: Choice and Fancy 70-90 lbs. 60.00-65.00, package fancy 79 lbs. 69.00. Good 50-70 lbs. 55.00-60.50.

Green Dragon Livestock Sales

Location: Ephrata RD 4. 1 mile N. on North State St., Ephrata.



COWS COWS COWS SALE EVERY FRIDAY

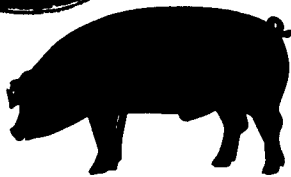
Lots of good Northern Feeder & Stockers. Slaughter Cows - Bull Steer, Veal-lamb.
11:00 A.M.-Beef Sale 200-300 each week.
1:00 P.M.-Dairy Sale.
7:00 P.M.-Small Animal Sale.

For Special Sales and Herd Dispersals on farm or at our barn or other market information call: Office 717-733-2444, Home 717-838-4318.

WALTER H. RISSER, Proprietor
All out of state and new buyers must have cash or certified check or current letter of credit from bank.



GWALTNEY of SMITHFIELD, LTD.



RECEIVING HOGS: LANCASTER COUNTY FARMERS

MONDAYS: McCoy's Branch Office, Bareville
WEDNESDAYS: (Next to Bawells Butcher Shop) & FRIDAYS: on Butler Rd. 717-656-9668

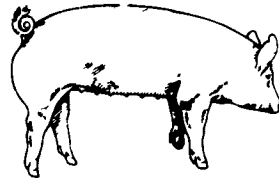
TUESDAYS: B & R Cattle
THURSDAYS: Marietta 717-426-3258

YORK COUNTY FARMERS

MONDAYS: Stewartstown 717-993-2564

TUESDAYS: Thomasville 717-792-2248 or 9836

Contact for information:
Ed Herrmann, 717-284-3203
or Charlie Kauffman, 215-593-5674
Future forward contracts available



EMERY'S BUYING STATION

OPEN TO RECEIVE YOUR MARKET HOGS

AT THE GREEN DRAGON MARKET
RD 4, EPHRATA, PA 17522
1 MILE NORTH OF EPHRATA
ON NORTH STATE STREET.

HOURS: MONDAY, TUESDAY, and WEDNESDAY 6:00 A.M. to 11:30 A.M.
215-458-5677 Residence
717-733-9648 Office

YOU ARE PAID FOR YOUR HOGS IMMEDIATELY

Ken & Lois Emery, Proprietors

KING'S AUCTION KIRKWOOD

Hay, Straw and Grain Auction
EVERY TUESDAY 12:00
Located Rt 472 5 miles south of Quarryville or 6 miles north of Oxford at Shaub's Auction House

Lloyd H. Kreider, Auctioneer AU-000513L
No out of state checks
ALL TRUCKERS AND FARMERS WELCOME

HAY & STRAW SALE

12:00 Noon
Every Wednesday
Westend of Avondale at the intersection of Baltimore Pike and Route 41.

Harvey Z. Martin
215-268-3604 (Office)
215-445-5303 (Residence)

MELHORN SALES, SERVICE, TRUCKING CO.

1010 W. Main St., Mount Joy, PA 17552

The only full service company, in this area, to handle the total needs of the poultrymen.

Which Includes:

- Area distributor of a complete line of Bio-Guard Poultry & Swine sanitation products. Including: sow shampoo, field disinfectants, hatchery disinfectants, egg wash.
- DEKALB chicks & started pullets sold by Nelson Groff & Harold Mishler.
- Complete loading & unloading of pullets & spent hens.
- New modern dollie equipment to move your pullets fast and efficiently with minimum stress to the pullets.

Place Your Confidence In A Full Service Company That Wants To Be Worthy Of Your Business

For More Information Phone:
717-653-1102

Monday - Friday 8:30 AM - 4:00 PM

