



MELVIN KOLB, INC.

SPECIAL SEPTEMBER HOLSTEIN SALE

Thursday, September 18th, 1986

7:30 P.M.



"The Place to Buy Quality Cows!"

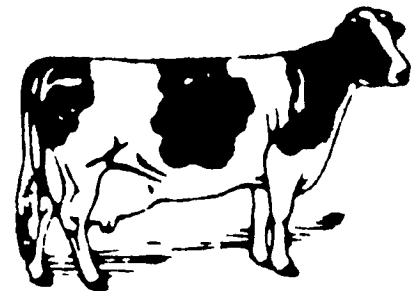
LOCATION: At my Maryland Farm, located 1/2 mile northwest of WOODSBORO, Route 550, in Frederick County. 301-898-7663 or 301-898-7720

175 PUREBREDS & GRADES, COWS & HEIFERS 175



- 25 Big fancy Grade 1st. calf heifers milking 60 lbs. to 70 lbs. per day, the right kind!
- 50 Top Fresh Grade cows milking over 100 lbs. per day.
- 25 fresh 1000 lb. heifers, milking well.
- 25 fresh Purebred heifers with lots of Quality & Excellent Pedigrees, giving plenty of milk.

- 25 fresh Purebred cows, quality and pedigrees to spare.
- Load of top springers and fresh heifers from CT.
- Purebred Service Age Bull, with good pedigree.
- 2 fresh Jerseys.
- Several Purebred heifer calves from top dams.



SPECIAL MENTION

- + A MD-NEW-HOPES REBEL ELEVATION dau. just fresh 3-0 282d 16,228m 3.8% 610f, milking 90 lbs.
- + A GP,84 STARGAZER dau. 3-0 303d 19,838m 3.8% 744f, fresh 14 days w/86 lbs. at 5.0% for tester.
- + A VG,85 KIT BUILDER dau., at 2-3 365d 17,011m 3.8% 638f, dam is EX-90-3E 352d 24,484m 890f, grandam is EX with 24,000m.
- + A 2 yr. old LAWCREST MARVEX-TWIN dau., her dam GP Matt Tippy dau. has 16,528m 4.1%, grandam a Snowman dau with recs over 18,000m, 3rd dam is GP over 22,000m, 4th dam GP over 22,000m, 5th dam GP with 4 recs over 800f. The Marvex is due saletime to Joyland Forcaster Starlite.
- + A GP 4 yr. old GIL-TEX-B MILKMASTER-TWIN dau., due Sept. 10th to Giltex Teletype, recs at 2-5 336d 13,050m 3.7% 485f, her dam a VG Milestone dau. at 5-1 295d 22,250m 4.2% 924f, grandam is VG at 8-0 300d 19,000m 636f, next dam GP,82 at 9-2 305d 22,540m 711f.

- + A GP,82 WHITTIER-FARMS ASTRO GALAXY dau. at 365d 23,040m 4.0% 920f, dam is GP,84 Transmitter dau. over 19,000m, next dam an Astronaut with 17,000m 3.7%.
- + A 3 yr. old BELLEVERNON STARGAZER dau., her dam a Lindy dau. at 2-0 2x 305d 14,920m 3.9% 579f, next dam at 5-04 2x 305d 17,250m 4.2% 717f.
- + A 2 yr. old LEADFIELD COLUMBUS-ET dau., her dam a Triple Threat dau. went EX-90 with 4-10 23,417m 3.8% 881f, Grandam is VG,88 at 8-1 20,235m 3.4% 685f.
- + A 3 yr. old OCEAN-VIEW-SEXATION dau. fresh.
- + A Big fancy close QUALITY ULTIMATE.
- + A 3 yr. old REMVALE ELEVATION SAXON dau.
- + A Big fancy JEMINI dau., will score VG, now milking 85 lbs!
- + A 2 yr. old A BIRCH-HOLLOW ROYALTY dau.
- + An open 2 yr. old Leadfield Columbus-ET dau.
- + A 2 yr. old fancy ROTATE dau.
- + 3 Purebred Columbus daughters with high pedigrees.
- + Many more real ones not mentioned in this ad,

FARMERS: If you need milk come to this Sale. We have what you need!



WIN A PB HEIFER CALF

DOOR PRIZE: Purebred Heifer Calf... must be a buyer to be eligible to win.



ALL-U-CAN EAT!!!

FREE LUNCH FOR ALL DAIRY FARMERS!

FREE TRANSPORTATION FOR LANCASTER CO. AMISH: Please phone 569-2106 or 569-6800.



Auctioneer: Robert Mullendore AU-000644-L
Pedigrees: Henry Kettering
Sale Managers: Thomas & Mel Kolb