

Lancaster Co. DHIA

(Continued from Page D17)

Music	3	5-8	305	23,608	3 6	846
Kathy	3	2-10	305	19,736	4 1	807
Liz	3	4-11	305	22,108	3 6	806
Janice	3	3 11	305	22,279	3 6	795
Robert Kauffman Jr						
Jerrie	3	4-2	305	25,932	3 9	1005
Omar Smoker						
Kit 10	3	6-0	305	23,872	4 2	992
Robert W Ulrich Jr						
Fancy	4	4-11	305	19,003	5 1	970
John K Peters						
Pearl	3	5 10	305	23,926	4 0	964
D Lamar Witmer						
Daniel	3	4-9	305	27,473	3 5	961
Rosbel	3	5 3	244	21,516	3 9	840
Marla	3	2-10	305	21,252	3 8	811
Nelson W Nolt						
118	3	4-9	305	20,661	4 6	959
95	3	7-0	291	21,008	4 1	855
11	3	11-0	305	24,030	3 4	813
Jonas O Sensenig						
5	3	5 1	305	24,026	4 0	950
41	3	5-1	305	28,979	3 1	900
30	3	3-9	305	20,820	4 1	851
12	3	5-6	305	19,718	4 2	820
28	3	5-9	305	21,602	3 8	812
7	3	5-6	305	21,036	3 8	789
John & Barb Brubaker						
Dee 69	3	4 9	281	23,170	4 1	946
Chris 15	3	5-0	305	21,707	3 8	827
Jesic 12	3	4 3	305	18,735	4 1	772
Weaver Homestead Farm						
60	3	3-6	305	28,494	3 3	944
33	3	2 1	304	22,268	4 1	923
84	3	2 3	285	19,748	4 5	883
27	3	3-4	275	23,263	3 6	827
3	3	4 1	305	22,731	3 6	821
56	3	2 2	289	22,647	3 5	802
76	3	2 1	305	20,763	3 9	800
Glenn R Binkley						
18	3	4-10	305	24,301	3 9	943
Nelson H Wenger						
Denise	3	5-0	305	23,404	4 0	942
Marvin Z Weaver						
18	3	5 3	305	25,152	3 7	939
2	3	3 10	305	22,174	3 7	830
John M Harnish						
Jane	3	5 8	305	22,175	4 2	931
Pixie	3	4 6	305	20,174	3 9	777
John H Howard						
Heather	3	4-1	305	21,637	4 3	931
Domino	3	2-4	305	20,697	3 8	779
Loren L Zimmerman						
Lisa	3	5 10	282	24,833	3 7	928
Mint	3	4-10	305	23,273	3 7	863
Tillie	3	3 3	305	19,914	4 2	841
Elsie	3	4 1	305	19,583	4 3	833
Elmie	3	6 8	297	22,688	3 6	818
Fay	3	6 7	305	22,853	3 6	817
G Hershey Hostetter						
Indigo	3	4-11	305	24,163	3 8	921
Ida	3	3-2	305	20,881	3 8	785
R Edwin Harnish						
Misty 3	3	8 8	305	23,926	3 8	919
131 14	3	4 7	305	20,702	3 9	815
Ramona	3	3 2	305	19,152	4 1	778
C Victor Groff						
Roxy	3	3 3	305	22,232	4 1	919
94	3	3 9	305	19,879	4 0	793
Marvin K Witmer						
Midge	3	4 2	305	25,601	3 6	913
Kenneth E Zurin						
157	3	4 0	305	24,914	3 7	913
163	3	4 0	305	23,606	3 5	825

JLE Acres						
Nina	3	4-9	305	19,431	4 7	913
Valerie	3	4-10	305	21,821	4 0	849
Edith	3	4-6	305	24,276	3 5	848
Sov	3	4-8	305	22,383	3 6	801
Eva	3	4 1	305	17,281	4 5	778
Robert & Linda Sensenig						
48	3	6 1	305	21,185	4 3	912
Raymond W Horning						
Donna	3	5 2	305	25,205	3 6	910
Daisy	3	3-10	305	24,882	3 4	858
Marybel	3	4-10	305	27,897	3 0	825
Kreider's & Nickle						
51	3	4-5	305	21,540	4 2	910
135	3	4-4	295	23,227	3 8	890
Glenn F Shenk						
Girle	3	6-6	305	21,895	4 2	909
Gerda	3	3 7	305	21,896	4 1	900
Lorna	3	5-3	305	23,604	3 5	830
Vernon R Umble & Son						
Thelma	3	6-6	305	19,864	4 6	908
Angie	3	3 2	305	21,506	4 0	853
Wilmer R Martin						
Dill	3	5-10	305	26,125	3 5	907
Dana	3	4-4	305	19,901	4 2	834
Dale Weiler						
Gertie	3	5 10	300	22,237	4 1	907
Anna	3	6-8	305	20,986	3 7	778
Robert Martin						
46	3	9 7	297	21,203	4 3	904
23	3	3 10	305	20,878	4 1	850
Glenn R Bushong						
Darlene	3	3 6	290	22,792	4 0	903

Dee	3	5 1	285	23,719	3 5	834
Stephen L Hershey						
6 Joan	3	5 9	305	24,578	3 7	902
John S Zimmerman						
26	3	4 2	305	20,632	4 4	902
42	3	3-0	305	20,265	4 2	857
8	3	4-6	305	22,573	3 7	845
52	3	4-2	293	23,978	3 4	815
60	3	3-10	300	17,599	4 4	780
Harry L Troop						
Pauline 7	3	6 10	305	25,375	3 5	899
Lester M Weaver #1						
95B	3	6 10	305	23,306	3 9	899
325	3	2-11	305	20,231	3 8	776
Welsh-Vista Farms						
Lexie	3	9-7	303	21,629	4 1	894
Ella	3	10-0	305	21,182	3 8	811
Jem	3	5-10	305	22,455	3 6	806
Fred Crider (Holstein)						
Gail	3	5-3	305	21,211	4 2	894
Carl L Martin						
Ada	3	10-4	305	24,927	3 6	891
Dilly	3	3-3	305	23,023	3 7	852
Skyllark	3	9-11	305	20,546	3 9	807
Syphony	3	5-1	293	19,279	4 2	803
Nora	3	9-0	305	19,136	4 2	801
Norman L Hershey						
Hope 12	3	4-2	302	24,630	3 6	890
Anette	3	4-2	305	25,022	3 5	868
Violet	3	4-1	305	21,726	3 9	851
Alice	3	2-3	305	19,092	4 4	835
Faye	3	3-3	305	24,000	3 5	832
Ellen	3	3 6	305	23,108	3 5	808

(Turn to Page D19)

ABS Imports Zebu Semen From Brazil

DEFOREST, Wisc. - Zebu semen from Brazil is now available through American Breeders Service (ABS). ABS is the first U.S. company to import Zebu semen from this South American country.

"Brazil is the world's best source of Bos Indicus pure strain bulls," says Keith Vander Velde, ABS manager of beef programs. "The country has the most highly selected and second largest population of Zebu in the world." Besides individual performance records on the bulls, the Brazilian breed association issued a sire summary for the first time in 1985.

This Zebu semen importation is possible due to a recently enacted health protocol between the United States and Brazil. ABS worked with Fundacao Bradesco-Pecplan, the largest Zebu A.I. center in the world, to secure the semen.

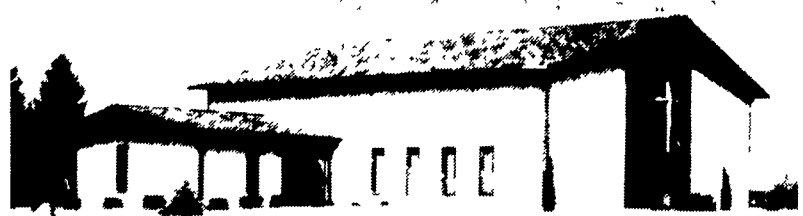
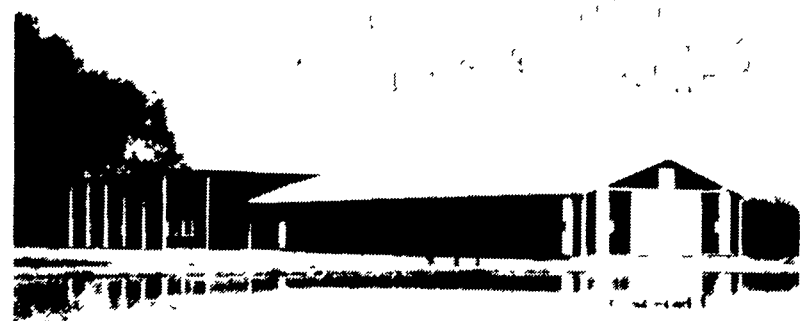
"This is very significant to beef breeders and will impact on the Bos Indicus breeds like the European breed importations of the early 1970's," comments ABS's manager of beef programs.

For more information on the Zebu bulls, call 1-800-ABS-STUD or call your local ABS Representative.

LEASING AVAILABLE



Morton Buildings



MORTON BUILDINGS

Call or write today to arrange to see and hear more reasons why you should own a Morton Building

1185 York Rd	Gettysburg PA 17325	Ph 717/334 2168
Rd #10 Box 76	Meadville PA 16335	Ph 814/336 5083
State College Box 361	Centre Hall PA 16828	Ph 814/364 9500
Box 126	Phillipsburg NJ 08865	Ph 201/454 7900
1918 Industrial Drive	Culpeper VA 22701	Ph 703/825-3633
P O Box 187	Harrington, DE 19952	Ph 302/398-8100



EAR CORN

Paying Top Prices For Good Quality Ear Corn

- Wet or Dry
- No Quantity too large or too small
- Fast Unloading - Dump on Pile & Go
- Easy access - 2.2 miles off 283 bypass-Manheim, Mt. Joy exit
- Daily Receiving 7:30 A.M. to 5 P.M. - unloading evenings & Saturdays by appt.
- Trucks available for pick up at your farm.

Call Anytime For Price
717-665-4785

JAMES E. NOLL GRAIN

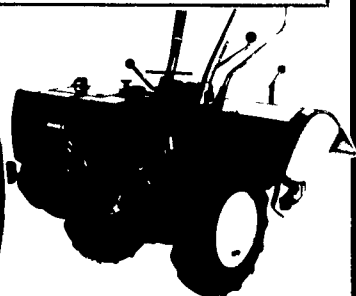
Gardeners!

TROY-BILT Tiller SALE!

Get The Best For Less!

- 4 Sizes To Choose From
- Rear-Tine, Powered Wheels For Ease-Of-Operation
- Busts Sod, Makes Seedbeds, Tills Out Weeds, Builds Rich Soil

BIGGEST DISCOUNT OF THE YEAR NOW IN EFFECT



WE MATCH TROY-BILT FACTORY PRICES

Your Authorized TROY-BILT Dealer



Hollinger's Financing Available
Lawn & Garden Equipment

THREE CONVENIENT LOCATIONS

1755 W. Main St. 1515 Chocolate Ave.
Ephrata, PA 17522 Hershey, PA 17033
Located on Rt. 322 Ph: (717) 533-4060
Ph: (717) 738-1131

2274 New Holland Pike, Lancaster, PA 17601
(717) 656-271G

