

Livestock market and auction news

Central U.S. Carlot

Pork Report
Wednesday, Sept. 3
Report supplied by USDA

Compared to Tuesday's 3:30 P.M. report, fresh pork loins 14-18 lbs. generally steady, 18-22 lbs. firm on light test; Boston butts 4-8 lbs. generally steady; sds bellies 12-16 lbs. \$2.00-4.00 higher; fresh hams 17-26 lbs. \$1.00 to \$5.50 higher. Trade slow to moderate, offerings light to moderate with moderate to good demand.

U.S. no. 2 175 lb. pork carcass cutout value advanced \$1.26 to an estimated \$84.37 per cwt.

Sales reported on 39 loads of fresh pork cuts, and 6 loads of trimmings and boneless processing pork.

Fresh Pork Cuts
FOP Omaha Basis
Loins, Regular, Fresh
14-18 lbs. 15½ loads 118.00-129.00, M 124.00-125.00.
18-22 lbs. 2 loads 122.00-124.00.
22-30 lbs. 121.00 B.
22/Up lbs. 1 load 122.00.
Tenderloins,
2/Bag
PL 320.00.
Picnics, Regular

4-8 lbs. 62.00 C.
8/Up 62.00 C.
Boston Butts
4-8 lbs. 6 loads 83.00-94.00, M 89.00-94.00.
8/Up 98.00 D.
Spareribs, Fresh
1.5-3.5 lbs. PL 155.00.
3.5-5.5 PL 115.00.
5.5/Up PL 64.00.
Spareribs, Frozen
5.5/Up PL 64.00.
Loin Backribs
1.5/DN PLS 320.00.
Hams, Skinned
Fresh
14-17 lbs. 94.00 E.
17-20 lbs. 1½ lds. 98.00-102.00.
20-26 lbs. 2½ lds. 98.00-102.00.
32/Up lbs. 4 lds. 92.00-93.00.
Hams, Skinned,
Frozen
17-20 lbs. 94.00 D.
Bellies, Sdls,
Skin On, Fresh
10-12 lbs. 81.00 E.
12-14 lbs. 1½ lds. 84.50-88.00.
14-16 lbs. 1½ lds. 84.50-88.00.
16-18 lbs. 83.00 A.
18-20 lbs. PL 81.00.
20-25 lbs. PL 79.00.
Bellies, Sdls,
Skin On, Frozen
10-12 lbs. 69.00 B.
12-14 lbs. 82.00 D.

14-16 lbs. 82.00 D.
Pork Trimmings/
Boneless Processing Pork
(Chemical Lean)
Combo 42% Fresh 1 ld. 52.00.
Combo 72% Fresh 2 lds. 94.00-97.00.
Boxed Frozen 94.00 A.
Blademeat
Boxed 88% Frozen PL 116.00.
Shank Meat
Fresh Comb 2 lds. 102.50-104.25.
Boneless Picnic
Combo 72% Frozen PL 98.00.
Boxed Frozen 99.00 B.
Skinned Jowls
Combo Fresh 52.00 A.
Cured and Processed
Meats
Hams, Smoked,
Skinned, Water
Added
16-19 lbs. 105.00-118.00.
19-23 lbs. 100.00-118.00.
Picnics, Smoked,
Water Added
4-7 lbs. 71.00-80.00.
Bacon, Sliced,
Vac. Pack
1 lb. pkg. 155.00-203.00.

Oklahoma Cattle
Wednesday, Sept. 3
Report supplied by USDA
Cattle and calves: Estimate

2500. Auction Sales totaled 1060 head. Same day last week: 586.
Weekly Cattle Summary:
Feeder steers and heifers steady. Good demand for stockers. Moderate demand from feedlot accounts. Slaughter cows weak to 2.00 lower mostly 50 cents to 1.00 off, exception breakers fully steady. Slaughter bulls weak to 1.00 lower. Slaughter cattle demand fair. Replacement or feeder cow demand very good. Bulk supply medium frame 1 thru 2 250-775# steers and heifers. Cows and bulls near 25% of auction sales.
FEEDER STEERS: Medium and large frame 1 250-260 lb. 80.00-85.50; 300-375 lb. 76.75-83.00; 400-450 lb. 75.00-79.75; 480 lb. fleshy 70.60; 550-570 lb. 65.50-67.25; 600-660 lb. 63.30-65.80; 700-760 lb. 62.50-63.50; 915 lb. 63.00. Medium and large frame mixed 1-2 380# 71.75; 480# 68.10; 500-560# 63.25-65.00; 625-700# 63.30-63.80; 700-750# 60.50-62.80; 830-910# 58.80-59.40. Medium and large frame 2 550-700# 59.90-63.30; 725-800# 57.30-58.50; Log Longhorn-Brahman Cross 600# 53.90. Large Frame 2 Holsteins 535# thin bulls 55.00; lot 755# Steers 48.60.
FEEDER HEIFERS: Medium frame 1 250-300 lb. 67.00-72.00; 375-

500 lb. 63.00-67.50; 550-750 lb. 58.80-60.00. Medium and large frame mixed 1-2 325-475# 58.25-61.25; 550-700# 57.25-58.60. Mixed small and medium frame 1 450-700# 55.00-57.10; Small frame 1 500-600# 53.40-56.00. Medium and large frame 2 450-700# 53.00-57.00, 575# Longhorns 50.25.
SLAUGHTER COWS: Breaking utility 3-4 36.20-38.10. Boning utility 1-2 35.10-38.00. Cutter 1-2 34.70-38.00. Canner and low dressing cutter 30.00-34.00.
SLAUGHTER BULLS: Y.G. 1 1590 lb. High dressing 47.75; 1075-1400 lb. 40.00-46.25.
REPLACEMENT OR FEEDER COWS: Small thru large frame 1 middle aged 35.25-38.75, lot 835 lb. 42.50.
FOR THE WEEK: Feeder steers and heifers steady to 50 cents higher. Slaughter cows steady to 1.00 higher. Slaughter bulls weak to 1.00 lower.

St. Louis Cattle

September 4, 1986

Report Supplied by USDA

FEEDERS: Around 800 head. Feeder steers steady to 1.00 higher, instances 2.00 higher on 600-700 lbs. Heifers mostly steady to 1.00 higher with the advance on 300-500 lb. calves.

FEEDER STEERS: Medium with few large frame 1: 300-500 lbs. 65.00-67.25, gaunt cross breeds 300-400 lbs. 76.50-77.00; 500-700 lbs. 63.00-67.00, package 695 lbs. 67.50; 700-900 lbs. 57.75-63.50; 900-1100 lbs. few fleshy 57.00-58.50.

FEEDER HEIFERS: Medium with few large frame 1: 300-500 lbs. 58.00-63.50, gaunt cross breeds 64.50; 500-600 lbs. 55.00-60.25; 600-700 lbs. 53.00-57.50, gaunt cross breeds 655 lbs. 61.00; 700-1000 lbs. fleshy 52.00-59.25, mostly 55.00-57.25.

BRED COWS: Five to seven year olds medium frame 1: 900-1000 lbs. second stage of pregnancy 43.25-43.75.

COW AND CALF PAIRS: Five year old medium frame 1: 900-1000 lbs. with 100-250 lb. calves at side 457.50-497.50 per pair.

	Hisex White	Hisex Brown
Hen Housed Production at 72 wks	273	269
Feed conversion	3.75	3.97
Egg size	25.6 oz/doz	26.4 oz/doz
Laying period depletion	0.5%	0.3%
Growing depletion	3.5%	3.0%
Final body weight	3.79 lbs	4.95 lbs



The Hisex White and Brown Layers: Above Average Performance Is Average

Compare the production and feed efficiency of the Hisex White and Hisex Brown layers and you won't find any better, anywhere. And that is a condition that will continue since Hisex research and development keeps improving the breed.

But mere test figures don't tell the whole story. The fact is that good henhouse managers can beat these figures. Hisex field testing has proven that. You may well obtain better feed conversion, mortality, and higher production.

As in all things, you must start with a good, basic product. The good genes, in other words.

See for yourself. Put these great birds to work for you soon. You'll find their average performance produces above average results.

For more information on our Hisex White or Hisex Brown layers, call (704) 528-4501 or write

Marketing Manager, Hisex Division of Pilch, Inc., Troutman, N.C. 28166
Telex 57-2323. Cable PILCHCHIX



FEEDER CATTLE

& PIG SALES

Tuesday, Sept. 9
7:00 P.M. SHARP

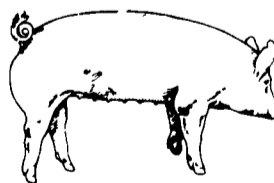
CARLISLE

LIVESTOCK MARKET, INC.
Just off I-81 Exit 12.
Phone (717) 249-4511
or Evenings,
Jim 249-2359



I'M NOT LION...

The Classified Livestock Section Has Beastly Selections!



EMERY'S BUYING STATION

OPEN TO RECEIVE YOUR MARKET HOGS

AT THE GREEN DRAGON MARKET
RD 4, EPHRATA, PA 17522
1 MILE NORTH OF EPHRATA
ON NORTH STATE STREET.

HOURS: MONDAY, TUESDAY, and WEDNESDAY 6:00 A.M. to 11:30 A.M.
215-458-5677 Residence
717-733-9648 Office

YOU ARE PAID FOR YOUR HOGS IMMEDIATELY

Ken & Lois Emery, Proprietors