

New Wheat Offers Growers Opportunities

MT. JOY — Despite the fact snow cover, moisture levels and disease pressured many Pennsylvania wheat fields, growers were able to harvest higher than average yields with a new wheat variety.

A side by side comparison shows

2551 wheat from Pioneer averaged more than 81 bushels an acre in comparison with public varieties Tyler, Saluda and Scotty which averaged 75 bushels an acre in the same plot.

"Harvests from this wheat were above public varieties and were in the same yield range as hybrid

wheat yields, but when you put a pencil to it, the difference in seed price makes the variety profitable," says Bill Fleet, eastern area agronomist for Pioneer Hi-Bred International, Inc.

The spotty growing conditions Pennsylvania growers experienced are apparent when additional plot data is examined. Harvests on a Kirkwood area farm show that 2551 yielded 89 bushels per acre at 11 percent moisture. In the same plot, Tyler yielded 84 bushels at 11.3 percent and Saluda yielded 75 bushels at 12 percent moisture. A plot of 2551 near Mt. Joy yielded 61 bushels an acre at 12.5 percent moisture, while the average of another variety in the same plot was 50 bushels an acre. A Northumberland County plot near Donsife yielded 70 bushels per acre at 12.2 percent moisture. Other varieties in the Donsife plot yielded an average of 57 bushels an acre.

Much of the yield advantage can be attributed to the variety's

defensive characteristics, strong straw strength and disease tolerance, but perhaps what sets it apart most is its multi-floret head.

"Field tests show that this variety has as many as 36 grains in each head. Other varieties will average around 26 to 29 grains per head. It makes sense that a wheat

with that many more grains in each head will put more grain in the bin.

"Common sense also says to spread out risk and maturity by planting more than one wheat variety. Making 2551 part of a package of wheats makes economic sense, too," Fleet says.



Long heads with four grains in each mash or section top a new wheat variety that combines excellent defensive traits such as strong straws and disease tolerance with high yields.

MAILBOX MARKET FOR SALE

Tyler near certified seed wheat, cleaned 50 bu.; IH manure spreader, 3 beater, good cond., 175 bu., \$600. Lanc. Co. 717-859-2374.

NI 319 mounted corn picker 322, 12 roll bed brackets for 560 Farmall. Berks Co. 215-944-9848.

400 gal. Sunset bulk milk tank, good cond. w/o compressor. Mifflin Co. 717-899-6628.

Amish buggy, good cond. New wheels, new brakes. Larry M. Stauffer, Rt. 2, Box 14-A, Diamond Station Rd., Ephrata, PA 17522.

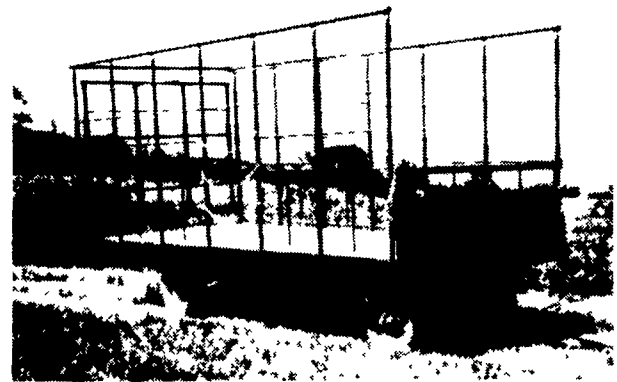
NH 616 forage harvester, corn and pickup heads. Columbia Co. 717-672-9426, no Sunday calls.

Parting Case 800 diesel tractor, wide front; Case 800 combine; JD 101 corn picker. Bucks Co. 215-968-4808.

1979 Mustang hatchback on 1974 Bronco 4x4 chassis and drive train, 70% complete, fiberglass front end, \$1,000. Bucks Co. 215-536-3649.

1984 Chevy Silverado diesel 4x4, 9200 GVW, dual tanks, rust proofed, new tires, automatic, AM-FM cassette, \$9,500. Tioga Co. 717-549-5431.

BEST BUY of the YEAR



- 6" Steel Main Beam
- 2" Vertical Tubing Drilled so that the 1" Horizontal tubing extends Full Length of Wagon
- Front-Side and Rear Loading and Unloading
- 2x8 Pressure Treated Lumber Floor
- 2x6 Oak Cross Beams
- Beds are 8' wide, available in 16, 18 or 21' lengths. Racks are 90" high.
- NEW FEATURE: 6" Channel across back for pushing wagon without damaging bed.

FOR FURTHER INFORMATION, CALL YOUR LOCAL DEALER:

LOST CREEK IMPLEMENT
Oakland Mill, PA
717-463-2161

MELROSE FARM SERVICE
Greencastle, PA
717-597-3138

KELLER BROS.
Lebanon, PA
717-949-6501

DUNKLE & GREIB
Mill Hall, PA
717-726-3115

WALTER G. COALE, INC.
Churchville, MD
301-734-7722

TOBIAS EQUIPMENT CO., INC.
Halifax, PA
717-362-3132

NORTHEAST DISTRIBUTING
West Clifford, Pa.
717-222-9020

VALLEY IMPLEMENT SALES
Harrisonburg, VA
703-434-9961

CHAMBERSBURG FARM SUPPLY
Chambersburg, PA
717-264-3533

OXFORD GREENLINE, INC.
Oxford, PA
215-932-2753

PAUL SHOVER'S, INC.
Loysville, PA
717-789-3117

A.B.C. GROFF
New Holland, PA
717-354-4731

CARLISLE FARM SERVICE
Carlisle, PA
77-243-4419

CLARK'S FARM SUPPLY
Williamsport, PA
717-494-0060

WE'RE MOVING!

INVENTORY CLEARANCE SALE

Now Thru Friday, Sept. 12th

15% OFF

All Stocked Inventory

D.S. MACHINE SHOP

DAVID E. STOLTZFUS

Old Address
3816 E. Newport Rd.
Gordonville, PA 17529
1 Mi. East of Intercourse
on Rt. 772

New Address
238 B Old Leacock Rd.
Gordonville, PA 17529

Effective Sept. 15th

SAVE UP TO

40%

OF YOUR FUEL COSTS PER YEAR WHEN YOU PURCHASE OUR NEW

ENERGY PERFORMER™



For literature call Morton, IL

1-800-447-7436

Illinois customers call 800/426-6686



MORTON BUILDINGS, INC.

OFFICE NEAREST YOU:



WEATHER VANE with every building purchased

MORTON BUILDINGS

Call or write today to arrange to see and hear more reasons why you should own a Morton Building

1185 York Rd
Gettysburg, PA 17325
Rd #10, Box 76
Meadville, PA 16335
State College, Box 361
Centre Hall PA 16828
Box 126

Phillipsburg, NJ 08865
1918 Industrial Drive
Culpeper VA 22701
P O Box 187
Harrington DE 19952

Ph 717/334 2168

Ph 814/336 5083

Ph 814/364 9500

Ph 201/454 7900

Ph 703/825 3633

Ph 302/398 8100

Manufactured By

CLW MANUFACTURING, INC.

R.D. #2, Box 8
Newburg, Pa. 17240
717-423-6794