



Blair Co. DHIA Monthly Report

Herd Owner

The twenty high herds for the month of June are listed as follows

Herd Owner	No. Cows	Days in Milk	Milk Lbs.	Fat Lbs.	
Clover Will Farms	137	5	89.2	21,600	779
Fidelity Holsteins	44	1	88.7	21,599	778
Marcove Farm	69.0	87.9	20,748	753	
Fred & Gary Bechtel	86.1	88.5	19,787	753	
Dale W Hoover	36	3	89.1	19,925	746
Burket Falls Farm	92.2	88.2	20,023	732	
Thomas W Kelly	69.1	87.6	20,637	727	
Richard R Fox & Sons	42	3	87.2	18,927	720
Penn-England	106	1	89.2	19,637	699
Baker Farms	124	3	87.1	18,942	699
Emile Dilling	108	2	86.3	19,517	697
Blackcrest Farms	71	5	87.5	18,669	694
Metzler Carson Farm	116	6	89.5	19,389	694
GW & RG Baker	72	0	89.1	18,722	688
Robert Kensingler	56	6	92.1	19,853	688
Lar Ann Farm	131	9	85.9	18,752	687
Mil-Ber Farms	117	2	89.1	17,990	686
Phillip E Pheasant	69	7	90.5	19,159	678
Charles & Mike Hoover	94.5	88.1	19,560	677	
Dennis A Smith	56	2	87.5	19,711	676

The high cow for the month is a registered Holstein in the Burket Falls herd Sandy, at 5 years 9 months, produced 27,694 pounds of milk and 1,098 pounds of butterfat in 305 days

The following are individual cow records of 305 days or less over 750 pounds butterfat

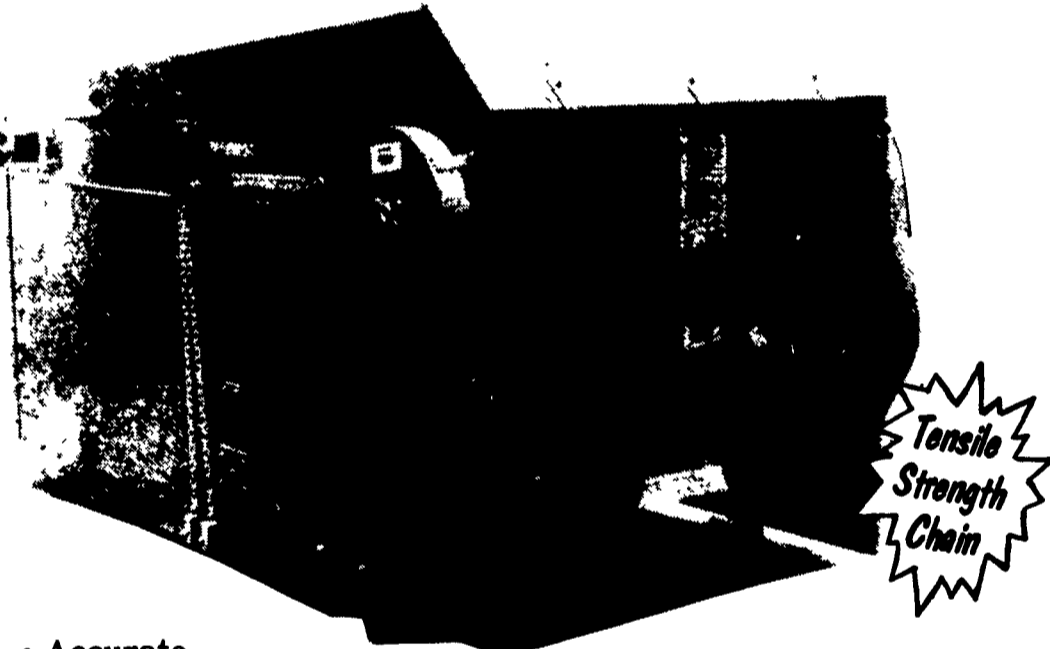
GW & RG Baker 266	GH	5-5	19,884	4	1	825
Over Lane Farms 110	RH	5-6	23,702	3	2	764
Smith Hollow Farms 167	GH	7-4	21,068	3	7	789
Mary Walters CSH6328	RH	4-2	20,489	3	8	784
Curryview Farms Lars	RH	3-2	21,837	3	6	780
Dale W Hoover Marla	RH	5-2	21,591	3	9	843
Judy	RH	3-0	19,962	4	5	896
Clover Will Farms 14C	GH	6-1	23,902	3	7	880
53C	GH	5-7	29,134	3	6	1057
65C	RH	5-4	21,425	3	7	802
24D	GH	4-7	23,360	3	8	893
7E	GH	3-5	20,874	3	7	770
34E	GH	3-0	22,719	4	0	919
39E	RH	3-0	17,668	5	0	877
G Wayne Smith Bev	GH	6-6	19,846	3	8	754
Metzler Carson Farm 602	GH	7-4	27,110	3	6	963
706	GH	0-0	20,932	3	8	791
Mil-Ber Farms Carl	RH	8-3	20,555	3	9	800
Betts	RH	7-1	22,714	3	3	750
Marcove Farm Mindy	RH	7-10	18,634	4	0	752
Alice	RH	6-2	22,093	3	6	790
Burket Falls Farm Sandy	RH	5-9	27,694	4	0	1098
Emile Dilling 293	RH	3-11	22,370	3	5	785
Fred & Gary Bechtel 81	RH	5-2	24,183	3	8	907
83	RH	5-4	24,342	3	3	801
87	RH	5-6	22,108	4	3	961

Lancaster Farming Saturday, September 6, 1986-D19

Donna	GH	4-1	21,963	3	6	780
Frosty	RH	4-0	18,298	4	3	780
Tracy	RH	3-9	20,241	4	1	839
Peach	RH	3-1	21,821	4	1	887
Kim	RH	2-2	19,140	4	0	758
George Wertman Wendy	GH	6-0	19,139	4	3	814
Richard R Fox & Sons Bess	GH	5-10	21,222	4	2	884
Harold & Bernard Bailey 170	GH	5-9	21,051	4	2	874
William R England 575	RH	4-4	21,207	3	9	829
665	GH	2-10	18,628	4	1	759
Donald G Hoover Maid	RH	7-9	21,292	3	7	793
Baker Farms 194	GH	11-10	18,347	4	6	848
337	GH	8-4	21,212	3	6	754
415	RH	6-1	21,739	3	7	809
514	RH	3-2	22,065	3	8	828
Pleasant View Farms 1 112	GH	4-8	18,245	4	3	783
Phillip E Pheasant Hump	GH	4-9	20,172	3	7	751
Thomas W Kelly Flossie	RH	7-8	22,173	3	5	774
Jessie	RH	3-4	22,512	3	6	810
Julius Replogle Decent	GH	0-0	18,193	4	2	770
Charles & Mike Hoover Janice	RH	3-0	17,524	4	3	751
Sollenberger Farms 63	GH	4-0	14,369	5	4	779
Bryon & Randy Huntsman ET-14	GH	5-11	20,207	4	2	856
Robert Babe 346	GH	5-9	21,178	3	6	770
Wilfred C Smith 57	RH	3-5	20,673	3	9	801
Fidelity Holsteins Jenifer	RH	4-3	23,514	3	7	860
Lizzie	RH	2-1	22,134	3	5	768
David W Bishop 15	GH	4-0	19,106	3	9	750

RISSLER FORAGE BLENDERS

For Your Total Mixed Ration Requirements



Tensile Strength Chain

- Accurate Beam Scales w/Signal Light
- Fast 2-3 Minute Mix Time
- 1/4 - 3/8 Steel Reinforcements
- Stainless Steel Floor
- Low Power Requirements
- Discharge Chute w/Magnets

Mixer Can Be Filled Anywhere Without Being Run All The Time

SPECIFICATIONS

Cu. Ft Capacity MODEL	75	105	135	150	190	230	300
Bushel Capacity	60	84	108	120	152	184	240
Approx. No Cows (TMR)							
Mix Twice Daily	36	45	55	65	85	100	125
Motor H.P.	3	3	5	5	5	5	5
Forages at 20 lbs per Cu. Ft	1500W	2100W	2700W	3000W	3800W	4600W	6000W
Width	49"	61"	61"	61"	73"	73"	85"
Height with Scales	65"	65"	65"	76"	76"	79"	79"
Length	96"	96"	120"	120"	120"	144"	144"
Discharge Height without Chute	24"	24"	24"	34"	34"	34"	34"
Tensile Strength On Chain	16,000 Lbs	16,000 Lbs	24,000 Lbs	24,000 Lbs	30,000 Lbs	30,000 Lbs	35,000 Lbs

SPECIAL DISCOUNT NOW THRU OCTOBER 1, 1986

I. H. RISSLER MANUFACTURING CO.
RD 3, Box 64, Denver Rd. Denver, PA 17517
(215) 267-2453

Authorized Dealers

Towanda, Pa.
McNEAL FARM SERVICE
717-364-5460

Dillsburg, Pa.
BADGER'S AGRI SERVICE
717-432-8377

Lebanon, Pa.
AUTOMATIC FARM SYSTEMS
717-274-5333

Mercersburg, Pa.
AG PRODUCTS CO.
717-328-3177

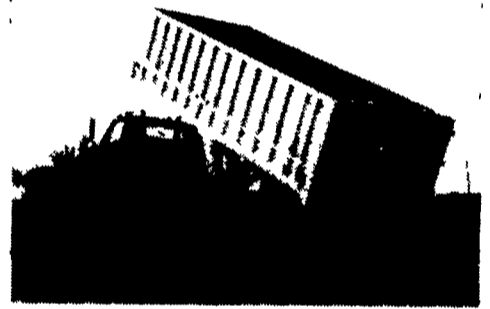
Bart, Pa.
SYLVAN RESSLER
717-786-2103

Littiz, Pa.
COUNTRY AG SERVICE, INC.
717-733-0408

HEWEY WELDING

Box 2312, Rd 4, Lebanon, PA 17042
717-867-5222

ALUMINUM GRAIN BODIES & ALUMINUM REPAIRS



These ultra-light bodies are designed for strength through engineering, not strength with bulk. For example a 16' grain body with tailgate and 48" sides weighs only 1490 lbs. complete. We'll build you any length or any side height up to 60".

Also available

- ★ Double swinging hay hauling tailgate
- ★ Barn door type tailgate
- ★ Slide out cattle chutes
- ★ Diamond Flooring
- ★ Pull out panel tailgates
- ★ Any size grain chute

BUCKETS & FORKS

For Skid Steer Loaders

Built To Order

AVAILABLE FOR MOST MAKES AND MODELS



- FORKS
40" to 72" Standard
Special Sizes Available
 - BUCKETS
Various Shapes And Widths According To Order
- Bucket Cutting Edge Available, Beveled One Side, Any Length.
5 Sizes: 3/8"x3", 1/2"x3", 1/2"x4", 3/4"x4", 5/8"x6"
Rubber Edges Available For Scraper Blades

WHOLESALE AND RETAIL

ATI CORPORATION

325 West Main St. New Holland, PA 17557
(717) 354-8721