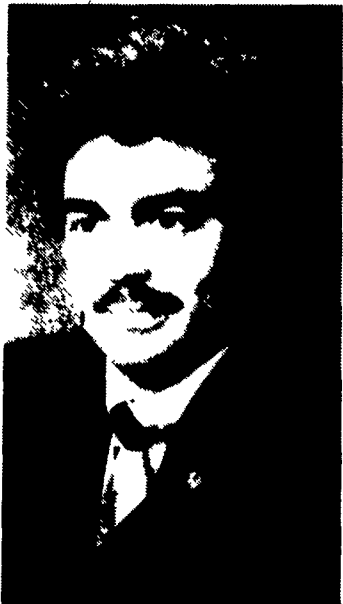


## Witman Named To Commonwealth Advisory Board

HARRISBURG — The appointment of Jay M. Witman of Manheim as a member of the Northeast Advisory Board of Commonwealth National Bank has been announced by Larry Zielinski, senior vice president and manager of the bank's Lancaster Region. Witman, an auctioneer and appraiser, is a partner in both J. Omar Landis Auction Service in Ephrata and Omar The Tent Renter in Ephrata.



Jay Witman

A 1971 graduate of Manheim Central High School, Witman is a graduate of Reppert School of Auctioneering, Decatur, Indiana, and the Stevens Trade School where he studied real estate appraising.

Witman is a past president of the Manheim Rotary Club, chairman of the Brethren Disaster Relief Auction, and past secretary-treasurer of the South East Auctioneers Association.

Members of Commonwealth National's advisory boards serve as advisors on such bank matters as business and community development and quality of service at the bank's branches in the

board's area. The Northeast Advisory Board serves the following Commonwealth National branch offices: Centerville, Lititz Springs, Manheim Township, New Holland, and Park City.

## Berks Co. DHIA

(Continued from Page D15)

Harold Dietrich Hol	B3	33 5	90 8	17,431	582
Luke Snyder	B3	54 7	87 3	17,115	582
Meadow Spring Farm	B3	54 2	83 2	16,995	579
Ronald Weyer Holst	B3	59 2	82 7	16,777	577
Lawrence Kieffer	B3	90 9	84 2	16,064	576
Ronald L O Neil	B3	49 5	86 9	15,529	574
Charles W Wagner	B3	50 8	90 0	15,787	571
Robert E Kieffer	B3	61 8	90 1	15,945	571
Eleanor K Siegfried	3	104 0	89 9	15,931	571
Lowell C Kurtz	B3	34 3	87 3	16,059	570
Charles D Moyer	B3	125 6	85 8	16,303	570
Wilmer Dreibelbis Jr	B3	110 2	82 7	15,847	570
Glenn E Hoffman	B3	54 7	86 3	15,643	570
Savidge Farms	B3	60 1	87 3	15,913	568
Richard W Hoppes	3	68 1	84 9	15,840	565
Poplardrive Holstein	B3	45 5	90 2	15,375	562
Clarelynn Farms	2	46 5	86 3	12,281	562
Albany Farm	B3	40 9	86 3	15,415	561
David Y Knauer	B3	53 2	85 6	16,758	560
Earl R Hafer	B3	111 8	87 2	15,453	559
Larry E Phillips	B3	34 8	84 8	15,358	558
Way Har Farms	B3	110 8	91 1	15,743	558
Richard Schlegel	B8	60 9	83 0	16,039	558
Edward R Haas	G3	28 7	91 7	15,224	555
Robert Yanos	B3	58 2	89 1	15,402	554
Jerry A Krone	B5	14 3	84 7	14,656	550
James H Adam	B3	114 5	87 5	14,626	550

\* 3 times a day milking

## Somerset Sale Topples Previous Records

BY MARGIE FUSCO

Cambria Co. Correspondent  
MEYERSDALE — Almost 300 animals went on the block in a record breaking sale at the Somerset County Fair Friday evening, August 22. Before the auctioneer's gavel had pounded out the last sale, \$144,626 was paid for 109 steers, 98 pigs, and 81 lambs.

Top bidder Godin & Godin Coal Co. of Boswell paid \$7 a pound for Greta Mostoller's 1,270 pound grand champion Simmental-cross steer. The winning bid was \$4.10 over the previous record.

Kermit Stahl's reserve grand

champion Chianina cross steer, weighing in at 1,280 pounds went for \$3.75 a pound to the Philson National Bank of Berlin, also topping the previous high of \$2.85.

Somerset County Market kept up the pace, buying Joe Speicher's 216 pound grand champion Duroc hog for \$6 a pound, a 75-cent increase over the past record. The reserve grand champion hog, a 222 pound Spotted - Yorkshire gilt owned by Diana Auman, sold to Philson National Bank for \$5.25 a pound, a full \$2 increase over the bid record set in 1983.

Rounding out the field, LaRue Meat Processing Co. of Somerset

bought the 123 pound grand champion Suffolk lamb from Theresa Phillips for \$9 a pound. The previous record was \$6.70 a pound. And Philson National Bank provided the winning bid for Gretchen Sheeder's 122 pound reserve grand champion Hampshire lamb at \$7 a pound, topping the 1982 record of \$4.85 a pound.

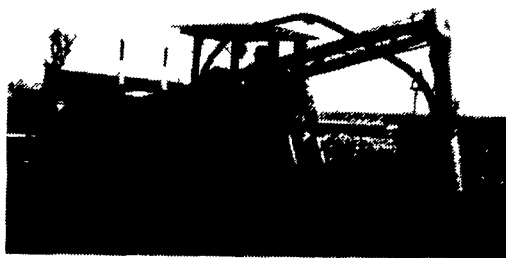
Top buyer for the sale was A. J. Walker Feed Service of Somerset, paying \$9,054 for 13 animals. Steer sales brought a total of \$111,350. Hogs auctioned for a \$21,914 total, and the final tally on lamb sales was \$11,361.

## Farm Drainage & Soil Conservation...

### That's Us!

We Are Fully Equipped To Install Tile With Laser Beam Control

We Specialize In Soil Conservation And Land Improvement Work



- Improved Land Use and Efficiency
- Better Soil Conservation
- Deeper Root Development
- Increased Crop Yield
- Longer Growing Seasons
- Improved Plant Quality
- Better Livestock Farming

We're Equipped With:  
Dozers, Pans And Excavators  
To Handle Any Excavating Jobs,  
Such As Terraces, Waterways,  
Diversion, Ponds, Etc.



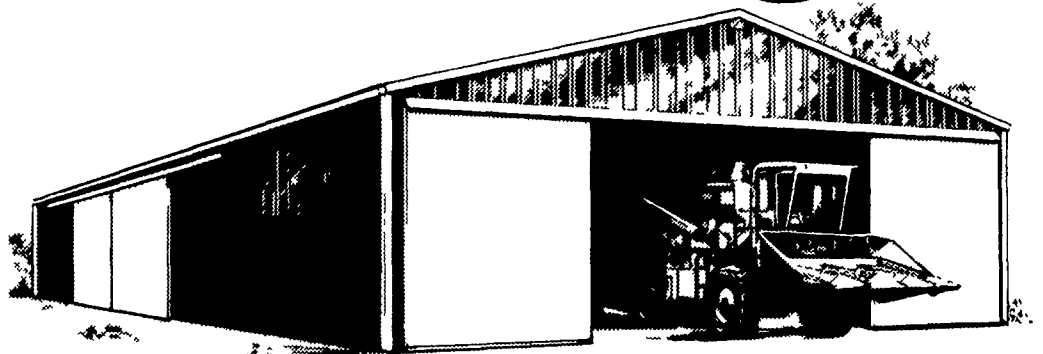
**COCALICO EQUIP. CO.**

FARM DRAINAGE & EXCAVATING

RD#4, BOX 317, DENVER, PA. 17517 PH: 215-267-3808  
717-738-3794



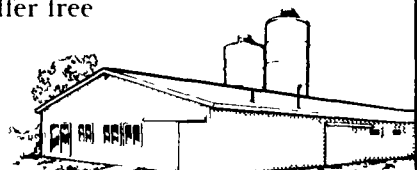
## We've got your Building



### Come and get it!

Machinery storage, dairy, farm buildings of all kinds Horse barns, utility buildings, garages, commercial structures too. You won't find a wider selection anywhere. More models, plans and sizes, more custom options. More bright, new siding and trim colors. We also offer free planning services to help meet your special needs

Take advantage of today's lower interest rates, and low Red Rose summer prices. Call today about a beautiful, maintenance-free Red Rose building for your farm, home or business



# Martin Limestone

## Apply lime early

Take advantage of early results by liming in the late Summer and Fall. Get ground ready for the first Spring shoots by allowing the lime all winter to condition the soil.

**MARTIN LIMESTONE, INC.**

Blue Ball, Pa. 354-4125  
Gap, Pa. 442 4148



CALL COLLECT OR MAIL  
COUPON FOR MORE INFORMATION

Name \_\_\_\_\_  
Address \_\_\_\_\_  
Town \_\_\_\_\_ State \_\_\_\_\_ Zip \_\_\_\_\_  
County \_\_\_\_\_ Tel \_\_\_\_\_

(215) 267-4911  
Mail To Box P-50 RD 2  
Stevens PA 17578