

# Beef Show Champions Named At South Mountain Fair

BY GINGER SECRIST MYERS

Adams Co. Correspondent  
**ARENDSVILLE** - Almost 50 head of beef cattle were paraded out for the Adams County Beef Show held in conjunction with the 65th South Mountain Fair here August 28. Serving as official judge for the evening was York County native and noted livestock judge, Laurie Dobrosky.

South Mountain Farm owners, Ray and Mary Grimes, McKnightstown, dominated the Charolais Show, capturing first place in all the classes except the junior heifer class. South Mountain also exhibited the grand champion female, a junior yearling heifer, SMF Margaret. The judge granted the champion more frame and muscling over the reserve champion female, ALS Silver Gina, the winning junior calf shown by Amy Sherman, Abbotstown.

South Mountain Farm entries swept the bull classes with their junior yearling bull, SMF Ram Rod, picking up the grand champion bull rosette, and their winning junior bull calf, SMF General Lee, receiving the nod for the reserve champion.

In the Polled Hereford show there was strong competition, with Lewis Hilbert, Littlestown collecting the rosette for the grand champion female of the show with his two-year-old cow, SF Miss Rockette. Reserve grand champion female went to Duane Glessner, Waynesboro, with his winning junior heifer calf, GBF Sara. Dobrosky noted a close placing in the championship, stating that as the calf matures she may well become the better animal, but that she had to go with the maturity of the two-year-old cow at this time.

Glessbrook Farm, Waynesboro, showed the grand champion bull, a 2-year-old named Care Bear. Duane Glessner led out a son of Care Bear, the winning junior bull calf, to be selected for the reserve slot.

Competition in the Santa Gertrudis breed was limited to one herd. Chapel Ridge Farm, Gene and Linda Moose, Gettysburg, exhibited all the entries in this breed.

There was only one Simmental entry, SSF Generation Gandhi, a junior bull calf, exhibited by Tim Spangler.



South Mountain Fair beef champions included (left) Santa Gertrudis shown by Gene and Susan Moose; Charolais, Donna Byers and Cathy Meckley representing South Mountain Farm; Hereford heifer, Lewis Hilbert; Hereford bull, Duane Glessner; Simmental, Tim Spangler; judge Laurie Dobrosky.

## Penn State Agronomists Receive Awards

**UNIVERSITY PARK** - Three Penn State agronomists recently received awards from the Northeastern Branch of the American Society of Agronomy.

Douglas Beegle, Thomas Watschke and Ann Wolf were recognized for their exceptional contributions to agronomic science, education and service.

Dr. Beegle, assistant professor of agronomy, received the industry-extension award. His work focuses on soil testing and soil fertility. He has initiated major changes in Penn State's soil testing program through new soil test

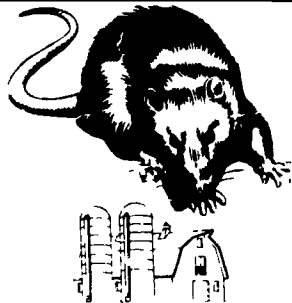
calibration work and has developed a manure analysis pilot program for Pennsylvania. The program is helping improve on-farm nutrient management for maximum economic benefit with minimum environmental impact.

The teaching award went to Dr. Watschke, professor of turfgrass science. He teaches several turfgrass management courses for both baccalaureate and certificate program students. Through lively teaching, slides and class projects, "he makes you want to learn," as one of his students commented. Dr. Watschke received the Gamma

Sigma Delta Teaching Award in 1982.

Ann Wolf, director of Penn State's Soil and Forage Testing Laboratory, received the graduate student research award. Ms. Wolf, whose research interests lie in increasing the efficiency of fertilizer use while protecting environmental quality, is working on her Ph.D. in agronomy. She is the author or co-author of 11 publications. Results of her research on soil phosphorus will be used in USDA models designed to evaluate the impact of non-point source pollution on water quality.

**ATTENTION FARMERS... FREE ESTIMATES ON RODENT CONTROL**



RODENTS carry diseases which can endanger the health of your poultry flocks. Your business is raising them. Ours is protecting them.

**We Specialize In Sanitizing And Disinfecting Poultry Houses**

Lancaster, PA  
397-3721

Lewistown, PA  
248-0983

State College, PA  
237-7607

**Fhrlich**

Since 1928  
 Pest control is too important to trust to anyone else

**WHITE WASHING with DAIRY WHITE**

- DRIES WHITE
- DOES NOT RUB OFF EASILY
- NO WET FLOORS
- IS COMPATIBLE WITH DISINFECTANT & FLY SPRAYS
- WASHES OFF WINDOWS & PIPELINES EASILY

**BARN CLEANING SERVICE AVAILABLE WITH COMPRESSED AIR**

To have your barn cleaned with air it will clean off dust, cob webs & lots of old lime. This will keep your barn looking cleaner & whiter longer

We will take work within 100 mile radius of Lancaster

**MAYNARD L. BEITZEL**  
 Witmer, PA 17585 717-392-7227

Barn Spraying Our Business, not a sideline.  
 Spraying since 1961.

**High Pressure Washing And Disinfecting Poultry Houses, Veal Pens, Hog Units And Dairy Barns**

**KEYSTONE GUN-KRETE**

**CONCRETE PUMPING SERVICE**

Featuring:

- Sidewinder 45 Concrete Pump • Up To 40 Cubic Yards Per Hour
- Pump Up To 150 Ft Vertical And 800 Ft Horizontal

**CONCRETE SPRAYING SERVICE**  
*A Proven Way Of Applying Concrete*

- Repair Retaining Walls
- Strengthen Existing Masonry Walls
- Reseal Manure Pits
- Manure Pit Construction
- Trench Silo Construction
- Silo Repair

**KEYSTONE GUN-KRETE**  
 61 Poplar Street Gordonville, PA 17529  
 (717) 768-3641

**Eliminate Fencing Problems with ARC 12 Solar Fencing High Tensile Wire**

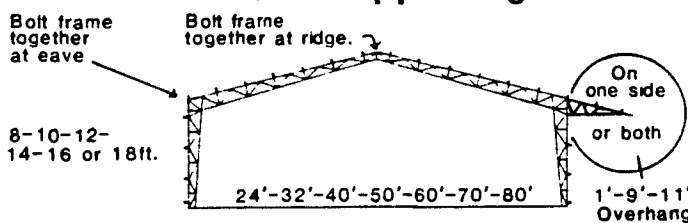
- Eliminates fence sagging
- No staples or wire clips
- Adjustable enclosed spring assembly for each wire
- Optional site rails™
- Optional Arc 110 Volt multi wire unit
- Installed by trained dealers
- Fully guaranteed by warranty

**SOLAR FENCING CO.**  
 1-800-247-8150

or  
**KEYSTONE SOLAR FENCE**  
 RD 2, Box 148 Watertown, PA 17777  
 717-649-5321

## PERKA BUILDINGS

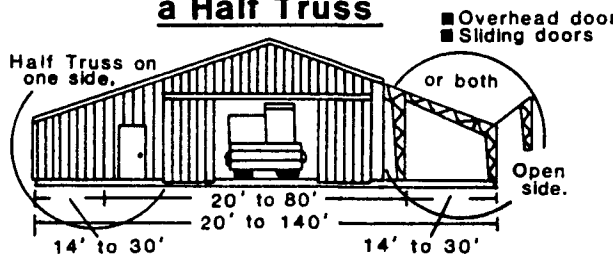
A size to suit your needs with or without Self-supporting Lean to.



**FARM • COMMERCIAL • INDUSTRIAL**

3"-12" Roof Pitch for more over head space.

For extra floor space at a low cost add a Half Truss



- OPEN CEILING-25% MORE USABLE SPACE.
- NO ROT-ONLY STEEL TOUCHING CONCRETE.
- EXPANDABLE-ADD ON LATER BY SIMPLY REMOVING ENDWALL SHEETING.

- EASY TO INSULATE.
- 40 YEAR WARRANTY ON STEEL COLUMN & TRUSS.
- 20 YEAR WARRANTY ON STEEL CLADDING.
- 8 MODELS TO CHOOSE FROM CUSTOM DESIGN AVAILABLE.
- DO IT YOURSELF OR HAVE US ERECT IT FOR YOU.

Get Your **FREE** Perka book

To: PERKA BUILDINGS SYSTEMS  
 Box 166, RD #2  
 New Holland, PA 17557

Name \_\_\_\_\_  
 Address \_\_\_\_\_  
 Town/City \_\_\_\_\_ County \_\_\_\_\_  
 Telephone No \_\_\_\_\_ Postal Code \_\_\_\_\_  
 I am interested in the following type of building  
 Width \_\_\_\_\_ Length \_\_\_\_\_ Size of Door \_\_\_\_\_  
 Implement Shed Dairy Hog Other  
 Workshop Loose Housing Stable  
 Industrial Commercial Riding Arena  
 Date of Planning To Build \_\_\_\_\_

Fill out this card and mail it today

or Call Now  
 (717)  
 354-4740