

USED COMBINES

- 1980 JD 8820 duals, 4WD
- 1980 JD 8820 4WD
- 1979 JD 7720 4WD
- 1973 JD 7700 4WD
- 2 - MF 750's
- AC G w/15' and 6 row C.H.
- 2 - JD 843 CH's
- 1 - JD 444 C.H.
- 1 - MF 63 C.H.

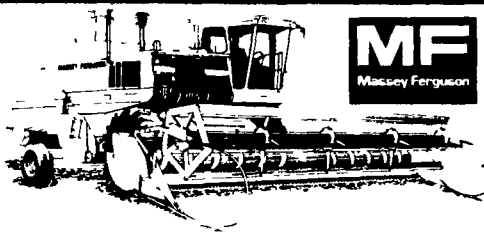
Jones Implement Co.
Cambridge, MD
301-228-0922

NEW
NEW HOLLAND 7',
472 HAYBINE
CASH PRICE \$5,695
717-243-2686

- | | | |
|--|-------------|----------------|
| | <u>List</u> | <u>SALE</u> |
| New Miller 2150 Wagon 15 Ft., 3 Beater,
Roof, Model 1074 10 Ton Easy Trail | | |
| Running Gear | \$6,771 | \$5,700 |
| New Miller 2175 Wagon, 17½ Ft., 3 Beater,
Roof, Model 1074, 10 Ton Easy Trail | | |
| Running Gear | \$7,523 | \$6,500 |

BIGGS INCORPORATED

34 Buckley Ave.
Rising Sun, Md.
301-658-5531



USED COMBINE SPECIAL
WAIVER TO
SEPT. 1, 1987
OR 6.9% APR MF FINANCING!

If you're ready to trade up to a pre-owned combine, we've got a combine and a very special offer for you. Come in now and let us put you on MF financing. For cash/no trade deal, we can even offer some additional discounts. See us for full details before the offer ends!

USED M-F COMBINES

- | | | | | | |
|-------------------------------|----------|---------------------------------------|----------|---|----------|
| 1980 MF 750 Gear Drive | \$27,000 | 1976 MF 750 Hydro 4 Wheel Drive | \$19,000 | 1977 A.C. Gleaner "M" | 16,000 |
| 1978 MF 750 Hydro | \$18,000 | 1976 MF 760 Hydro V8 | \$18,000 | 1967 New Idea 702 Uni System With 3 Row Picker-Husker | \$ 7,000 |
| 1978 MF 760 Hydro V8 | \$17,000 | 1975 MF 750 Gear Drive | \$15,000 | 1980 New Idea 801 Uni-System Diesel Tractor With 4 Wheel Drive Only 1200 Hrs. 818 Grain Combine, 840 Feeder Housing 844N 4 Row Corn Head, 767 Harvester, 774 Cutter Head, and 766 Pick-Up | \$45,700 |
| 1978 MF 750 Hydro 6 Cyl. | \$15,000 | 1974 MF 760 Hydro 6 Cyl. | \$14,000 | | |
| 1978 MF 760 Hydro V8 | \$17,000 | 1974 MF 760 Gear Drive | \$ 9,500 | | |
| 1977 MF 760 Hydro V8 | \$24,000 | 1972 MF 510 Diesel | \$ 6,500 | | |
| 1977 MF 760 Hydro V8 | \$18,000 | 1972 MF 300 Gas | \$ 5,500 | | |
| 1976 MF 760 Hydro V8 | \$15,000 | 1971 MF 300 Gas | \$ 3,500 | | |
| | | 1969 MF 510 Diesel | \$ 4,000 | | |
| | | 1966 MF 410 Gas | \$ 2,000 | | |

Above Combines Include Grain Tables, Less Cornheads, 40 Cornheads In 2, 4, 6 and 8 Row Sizes

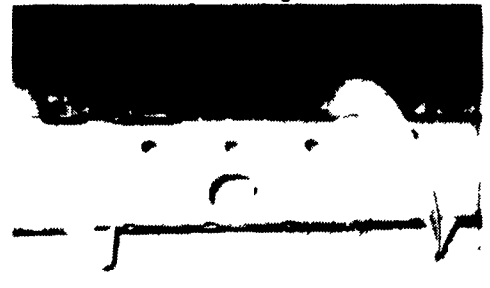
USED TRACTORS

- | | | | |
|--------------------------------------|----------|-------------------|----------|
| 1155 w/Cab | \$ 8,500 | MH Pony | \$ 1,250 |
| 1155 | \$10,000 | IH 1206 Dsl. | \$ 6,500 |
| 1155 | \$ 7,900 | MF 2675 | \$12,500 |
| MF 1080 | \$ 5,000 | MF 2705 | \$10,500 |
| MF 50 | \$ 2,200 | Super 90 | \$ 4,500 |
| MF 135 Gas | \$ 4,800 | MF 285 | \$ 8,200 |
| MF 1150 | \$ 5,500 | MF 180 | \$ 3,500 |
| Ford County 1164 4 Wheel Drive | \$ 6,800 | Oliver 1950 | \$ 5,500 |
| IH 574 Dsl. | \$ 5,200 | Ford 8000 | |

USED EQUIPMENT

- | | | | |
|---|----------|--|----------|
| MF 684 Harvester with 2 Row Corn Head | \$12,700 | MF 66 Spring Trip 3-16 Plow | \$ 450 |
| Tye 10 Ft. No Till Grain Drill | \$10,500 | MF 62 Rigid Beam 3-16 Plow | \$ 250 |
| MF 724 Manure Spreader 260 Bu. | \$ 6,100 | 6 Ft. Landmaster Rotavator | \$ 400 |
| Glenco F17 Transport 12 Ft. Disc Harrow | \$ 6,200 | Ford 10 Ft. 3 Pt. Chisel Plow | \$ 1,200 |
| MF 351 19½ Ft. Soil Finisher | \$ 6,100 | Yetter 15 Ft. Rotary Hoe | \$ 1,500 |
| Glenco 9 Tooth Soil Savor | \$ 5,900 | MF 820 Hyd. 19 Ft. Wing Disc | \$ 8,500 |
| Glenco 7 Tooth Soil Savor | \$ 6,100 | MF 233 10 Ft. Disc Harrow | \$ 4,100 |
| Landoll 10 Ft. Soil Finisher | \$ 3,200 | MF 124 Baler | \$ 1,500 |
| Brady 12 Ft. Flail Chopper | \$ 4,900 | MF 200 Harvester w/2 Row Corn Head | \$ 1,500 |
| Brady 6 Ft. Flail Chopper | \$ 2,500 | NH 717 Harvester w/1 Row Corn Head | \$ 800 |
| Brady 6 Ft. Flail Chopper | \$ 3,200 | Pequea 710 Hay Fluffer | \$ 1,325 |
| Shaver Post Driver | \$ 1,850 | E.Z. Flow Forage Wagon | \$ 6,000 |
| Danuser Post Hole Digger | \$ 640 | MF 41 3 Pt. Sickle Bar Mower | \$ 2,400 |
| Danuser Wood Splitter | \$ 780 | Hawk 6 Ft. Rotary Mower | \$ 540 |
| MF 880 Hyd. Reset 6-16 Plow | \$ 4,650 | Razor 5 Ft. Rotary Mower | \$ 400 |
| MF 345 Spring Reset 3-16 Plow | \$ 2,500 | MF 925 Haybine | \$ 1,900 |
| MF 345 Spring Reset 3-16 Plow | \$ 2,500 | Farmhand Grinder Mixer | \$ 1,700 |
| MF 82 Spring Trip 3-16 Plow | \$ 1,200 | E.Z. Trail 6 Ton Running Gear | \$ 550 |
| Athens 10 Ft. Offset Disc | \$ 1,200 | Gehl Running Gear | \$ 250 |
| | | MF 246 Loader | \$ 3,900 |

SCHMIDT "HEAVY DUTY REBUILT TABLE AUGER"



Damaged Or Broken Combine Table Augers Rebuilt Same As New!

No need to purchase a new auger when you can buy one that's rebuilt. Or have your auger repaired for less than one half of the new one's price. Rebuilt augers are guaranteed to run true! "They are jig repaired."

Call Now For Appointment
And Price Quotation To
Have Your Auger Repaired

M.M. WEAVER & SONS, INC.

LEOLA, PA 17540 PH: 717-656-2321
Located: 4 miles West of New Holland on Route 23, 1½ miles North-east of Leola on the North Groffdale Road, 1 mile on the right, opposite Groffdale Mennonite Church.



USED TRACTORS

- | | |
|-------------------------------|---|
| New JD 2150 | |
| JD 4630 w/4 post roll guard | IH 806 diesel, excellent |
| JD 4430, cab, air, quad range | Ford 7000 |
| JD 2510 | Ford 5000 Gas |
| JD 4320, cab & air | Ford 3400 w/Loader |
| JD 4030, 4 post, roll guard | Ford 3600, sharp |
| JD 2940 w/front wheel assist | Ford 555 w/loader & cab |
| JD 2940 w/cab | Ford 335 w/loader |
| JD 2840 | AC 210 diesel |
| JD 2640 w/146 loader, (sharp) | AC 185, sharp |
| JD 2510 Gas | AC 200, like new |
| JD 820 Die. SOLD | MF 205, 4WD |
| JD 4240, power shift | MF 50C w/loader |
| JD 4240 w/cab & air | MF 20 w/loader |
| JD 3020 diesel, side console | David Brown 1200 |
| JD 3020 gas | Kubota 4000 w/loader |
| JD 3020 D SOLD | |
| JD 310 backhoe loader | 1983 AC 8010 w/ front wheel assist, used 900 hrs. |
| JD 400 diesel backhoe loader | |
| IH 3500 backhoe loader | |
| IH 1066 | |
| IH 766 w/cab | |

1983 AC 8010 w/ front wheel assist, used 900 hrs.

Int. 7000 Forklift 28' Lift

USED PLOWS

- | | |
|-----------------------------------|--------------------------------------|
| Int. 5 btm. 16" spring reset plow | Large selection of 3 to 7 btm. plows |
| White 6 btm. 16" plow | Int. 3 btm. rollover plow |

GRINDERS & MIXERS

- | | |
|-------------------|--------------------------------------|
| NH 357, excellent | IH 1150 \$1, SOLD Gehl 65 |
|-------------------|--------------------------------------|

USED COMBINES

- | | |
|------------------------------|--|
| 444 JD corn heads | Large selection of JD 2, 3, 4 & 6 row corn heads |
| 443 & 643 corn heads | MF 1163 6 row head, like new |
| JD 3300 SOLD line | JD 6600 diesel, rotary screen |
| 1975 JD 4400 diesel | JD 4400 gas, rotary screen |
| MF 410 | |

USED PLANTERS

- | | |
|------------------------------|------------------------------------|
| JD 494A | JD 7000 6 row conservation, liquid |
| JD 7000 4 row Dry fertilizer | |

Used Moore no-till grain drill

USED HARVESTERS

- | | |
|-------------------------------------|--|
| Fox 2 row snapper head | Field Queen 3 row wide corn head |
| Fox Custom 90 | Fox 3 row narrow SOLD |
| NH 718, sharp | JD 3 row narrow SOLD ted head |
| NH 3 pt. hitch chopper w/1 row head | |

Gehl flail head, excellent condition

HAY EQUIPMENT

- | | |
|--|----------------------------------|
| NH 472 haybine | Large selection of used rakes |
| Gehl 1090 haybine | NH 1010 Stacker Bale Wagon |
| Gehl 1500 Round baler | NH 1032 Stacker Bale Wagon |
| NH 276 baler, excellent | NH 1037 Stacker Bale Wagon |
| JD 346 baler, excellent | |
| NH 315 wire baler, nice | NI 244 tandem spreader, like new |
| NH 273 w/thrower | |
| M-C 7' rotary sythe, used on 100 acres | |

MISCELLANEOUS

- | | |
|--|---|
| JD 58 loader | NI 2 row narrow, 12 roll bed |
| Int. 510 grain drill | NI 323 1 row picker |
| Large selection of smaller discs | NI 324 picker, like new |
| Danco hydraulic rear unloading silage wagon on tandem running gear | NI 2 row wide, 12 roll, \$3,000. |
| Badger 16' Forage Wagon, 3 Beaters SOLD w/roof, tandem running gear | Kewanee hydraulic fold 18' disc |
| NI 2 row wide, 12 roll bed, like new | Big V snow plow 12' wide |
| | 1979 Int. S-1954 w/DT 466 diesel engine, cab & chassis. |

D & R EQUIPMENT INC.

Ringoes, New Jersey (201) 782-5082