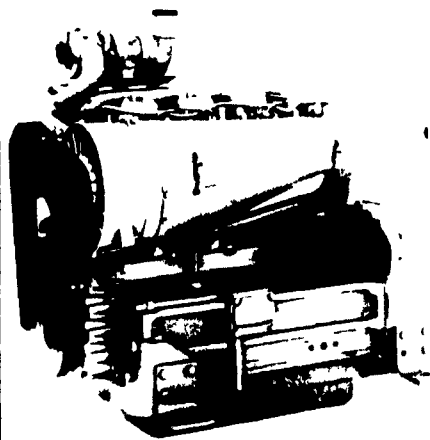


**ADIM-SAME Diesels: Your Growing Partner**

Rugged, simple cast-iron construction that's built to last! Trouble-free air-cooling with fewer components reduces maintenance, repairs, downtime. Air-cooled internal oil spray cools critical parts, extends engine life. Fuel-efficient for low operating cost. Time-tested since 1927. More than competitively priced. DISTRIBUTOR INQUIRIES INVITED.



24  
thru  
160 HP

**SAME DIESEL ENGINES**



6700 South Florida Ave  
Suite 3  
Lakeland, FL 33803  
Ph (813) 646-6767  
Telex 510 801 0754

**TRACTORS**

AC 7030	AC 7010D	AC XT190D	IH 806
AC 7060	AC 200	AC 180D	JD 2010
AC 7040D	AC 210	AC D19D	MF 65G
AC 7045D	Oliver Super 77	AC D14	Case 1490
AC 7050D	AC 7000D	AC 5050D	JD 450 Crawler
AC 7020D		AC 5040D	Oliver 1650D

<b>Used Hay Wagons</b>	<b>Used N.H. 315 Baler With Thrower, Like New</b>	<b>Used Gehl Mower Conditioner</b>
------------------------	---	------------------------------------

**SPECIAL**  
9 Ton Heavy Duty Tag-A-Long Trailer

**USED COMBINES (LIKE NEW)**  
A C Models G-C-N-L-F  
These Combines are in Excellent Condition

**USED FORAGE HARVESTORS:**  
GEHL I H, N H

NI 708 UNI-SYSTEM, HYDRO DRIVE w/717 COMBINE, CORNHEAD & GRAINHEAD

**GRUMELLI FARM SERVICE**

Quarryville, Pa.  
717-786-7318



1500-gal. Tank Will Load in Approx. 1 1/2 Min.

✓ **Check These Outstanding Features on the SLURRY BUGGY**

A liquid manure spreader that loads and unloads and has no chains, bearings, fans, augers, or moving parts that touch manure.

- ✓ Tanks are made of 5/16 thick metal
- ✓ Large air cooled vacuum pump
- ✓ Pump has not only a primary trap but also a large secondary moisture trap
- ✓ Pump has an air pre-cleaner
- ✓ A 6 inch hydraulic operated brass valve for unloading
- ✓ Has 3 different manure spreading patterns
- ✓ Tank has a float level indicator and sight glass
- ✓ A 20 inch rear manhole for easy access to tank
- ✓ Priced at \$5 625

**Optional Features:**  
Heavy Duty tool bar with tooth spring loaded injection  
6 inch side valve large flotation tires

Farmers rebuild your tanker with one of our new pumps (192 cfm @ 10 HG)

We have 6" and 8" Tapered brass valves for your Liquid Manure Handling Needs

**\*1,275**

**SLURRY BUGGY EQUIPMENT**

R.D. 2, Box 148

Ephrata, Pa. 17522

(717) 859-3869

**Engine Parts**

**Gaskets**

**Cylinder Heads  
Rebuilt or Exchange  
Engine Rebuilding**

Spring Garden Repair

RD 1, Box 204  
Kinzer, PA 17535

**IH 1440 COMBINE**  
Excellent Used Condition.  
Complete records available.

Call:  
**M & R Equipment, Inc.**  
New Park, PA  
717-993-2511

**USED TRACTORS**

AC 7040, cab & air, power shift; 7030, cab & air; 6140 4WD w/loader; 6080; 6060; 6060 4WD; 5050 4WD w/loader; 5040 w/full hyd. front end loader; 190XT; 190XT w/cab; 175 diesel; 170 Gas; 160; D17; D15; G w/hydr. & cultivator; B.  
JD 3010 diesel; 2240.  
IHC 674, 544; 424 w/hydr. dump loader; 230; 140; 100; Super A, with equipment; Cub; Cub low boy w/5' Woods rotary mower; Cub low boy w/Mott Hammer knife mower; Cub w/cultivator; Farmall 460 Gas, Farmall M.  
FORD: 7600 diesel, high clearance; 7000; 6600 w/quick tach front end loader; 5000; 4100 Diesel w/loader; 4000; 600; and 8 N's.  
KUBOTA: 7500 4WD demonstrator; L 225 w/cab.  
MF: 285; 265 diesel; 175 diesel; 165; 65; 65 diesel; 50 diesel; 40; Ferguson 30, 40.  
OLIVER: OC 6 diesel, crawler, good bottom.

**USED FORAGE HARVESTERS:**

Hesston 2000-100, 2000-150, 7020; NH Super 717; large selection of pick up heads. JD 5400 self-propelled forage harvester. IHC, Kools, and NI forage blowers. Gehl 750 chopper w/2R corn head, like new; NH 28 Blower, like new; NH 33 Flail Chopper; JD 643 Narrow Combine Head.  
FORAGE BOXES: IHC- 3 beater w/roof, Grove 2 beater, H & S 3 beater, Lamco 2 beater.

**MISCELLANEOUS**

Shaver 3 pt. post pounder; IHC 510 Grain Drill 13 double disc has grass seed & fertilizer like new, Shaver post pounder, 3 pt. hitch York rakes Servis 10 ft. 2 spindle trailer rotary mower, Bush Hog 5 & 6 ft. 3 pt. rotary mowers, Howard heavy duty 5 & 6 ft. 3 pt. rototillers, Small Davis backhoe for skid steer or 3 pt. mounting, IHC fast hitch carry all platform, Mott Hammer knife mower for Farmall Cub, 3 pt. hitch Mott Hammer knife mower, (3) Farmhand Corn Blurrs for high moisture corn, 20 misc. hydr. front end loaders for various models and make tractors - call for your needs, AC 100 HP D power unit with P.T.O. and clutch - choice of three. Mounted cultivator for Farmall Cub, Super C, 200, 340; PTO Roller Mill, like new. Farmhand regrinder blower, like new; JD 2 row potato digger; NH 28 Blower, like new; Woods 20' batwing mower; Woods 650 3 point backhoe; 12' Dump truck body.

**INDUSTRIAL**

TRACTOR LOADER BACKHOES - Case 580C w/cab, JD 310-A; AC 715D; 715B, low hrs. CRAWLER LOADER - AC 655. TRACTORS WITH LOADER, 3 PT. HITCH & PTO - IHC 2444, MF 40, MF 2200. SKID STEER LOADER - NH 225, Bobcat 610 gas, Bobcat 611 Deutz diesel. LOG SKIDDER - (2) JD 440 series A; Ford 50 HP power unit. FORKLIFTS - JD 9300 backhoe. AC 840 1 1/2 yd. articulated payloader; AC 940 2 yd. articulated payloader. 1 ton paving roller. 1977 Ford F700 truck with dump body, very good. 2 axle - 6 ton Tag-A-Long trailer. ARPS 3 pt. backhoe for small tractor. Mechanics Special, JD 1010 Diesel, IHC 3414, Moline tractor loader backhoes, low priced. IHC 560 Forklift; JD 350C dozer 6 way blade & winch; 1979 Louisville Ford low wheel base tandem & Cummins diesel

**SPRAYERS**

3 pt. & trailer sprayers, several orchard sprayers - air blast.  
Meyers trailer air blast  
John Bean trailer hand gun PTO driven

**LIQUID MANURE EQUIPMENT**

Martin V2100 Spreader.  
Clay vacuum honey wagon; injectors available, like new.  
Hedlund Martin Vanguard 2400 gal. tandem spreader.  
2100 gal. liquid spreader w/knife injector.  
NI Basin Pump.  
New Hedlund Martin liquid manure pumps & tanks in stock for immediate delivery.  
Patz 3000 gallon liquid tanker  
Better Bilt 1500 gallon liquid tanker  
Better Bilt PTO liquid manure pump  
Used tank type spreaders, 4 used PTO and ground drive conventional spreaders  
Better Built 8' Manure Pit Pump, very good cond.  
New Hawk 170 tank spreader at dealer cost, only 1 available  
Badger 3350 Gal. tandem spreader w/injectors.

**HAY EQUIPMENT**

HAYBINES: NH 489, like new; NH 477-7', Hesston PT7, PT10, 1071, 1090-9'.  
SELF-PROPELLED HAYBINES: Hesston 6200, 310, CUDITIONERS: NI 279-9', NH 270, 272-7'. HAY TEDDERS: (New)-Fahr 4 star 17 ft., Kuhn 2 star, Grimm PTO reel type Deutz-Fahr side rakes. (Used)-Fahr 4 star, Lely 2 star Kuhn 2 star, 3 pt., Grimm PTO and ground drive. BALERS: MF 12, NH 270, 268, 276, 310, 320. BALERS w/THROWERS: NH 270, 273, 275, 315, 320; Hesston 4500, MF 124, IHC 425. ROUND BALERS: Hesston 5800, NH 846, 851. Zimmerman 36 & 40 ft. elevators. New wood & steel bale racks. In stock new 6, 8, & 10 ton running gears, 12 ton tandem running gear. Large selection of sickle bar mowers, 3 pt. hitch, semi mount, & mounted. Call for your needs.  
SIDE RAKES: NH 256 w/dolly wheel, 56, JD 660 w/dolly wheel, NI, IHC 35 w/dolly wheel, NI wheel rake. Deutz 3 pt. hitch disc hay mower. Hesston 1014 2+2 hydr. swing mower conditioner. Hesston stack Hand 10 & 30 stack processor.

**NEW EQUIPMENT**

Full line of Kubota tractors, loaders, mowers and tillers, low interest on all models. Deutz-Allis lawn and garden tractors. Deutz-Allis farm tractors from 40 to 110 horse power in stock. Blades, loaders, backhoes, trailers and carts; NI 360, 362, & 364 spreaders.

WE SHIP PARTS DAILY BY UPS.

**MECHANICS SPECIAL**

IH 500 Crawler  
As Received  
**\$3,975**

**MARSHALL MACHINERY, INC.**

Rt 652, Midway Between Indian Orchard and Beach Lake  
Honesdale, R D #4, PA 18431  
PHONE: (717) 729-7117  
SALES & SERVICE  
Deutz-Allis, Kubota Hesston  
New Idea, CDS Industrial formerly  
AC light industrial