

# THE OLD FARMER'S ALMANAC

SEPT. 1-7, 1986

Showers are the rule as kids go back to school.

Labor Day Sept 1 Great Britain and her colonies switched to the Gregorian calendar, touching off violent protests, Sept 2, 1752 Average length of days for the week, 13 hours, 2 minutes Brush fires fanned by winds destroyed 20 villages and over a million acres of forest in Michigan, Sept 5, 1881 New moon Sept 4 (Thurs) Violent hurricane hit the Florida Keys, leaving 408 dead, Sept 2, 1935 President William McKinley shot and fatally wounded by Leon Czolgosz in Buffalo, N.Y., Sept 6, 1901 *He's a fool that cannot conceal his wisdom*



**Ask the Old Farmer:** The porcelain has worn off an old bathtub in our house, but my husband doesn't want to replace it because it's so comfortable for his size Is there a paint available that we can use to restore the tub? P A W, Rhinebeck, N.Y.

*There are epoxy paints made to coat old tubs and basins. It won't be the equal of a new tub, but it should last for three or four years. Be sure to clean the tub and fumigate the room after the job, since the paint fumes are toxic.*

**Home Hints:** As your crops finish producing, sow winter rye in fallow areas to act as a 'green manure' when you till next spring.

## OLD FARMER'S WEATHER FORECAST

**New England:** Beginning of week showers with cool temperatures, midweek rainy and warm, end of week cool

**Greater New York-New Jersey:** Week begins with thundershowers and cool temperatures, midweek sunny and warm, end of week showers with cool temperatures

**Middle Atlantic Coastal:** Rainy and mild at beginning of week, clear and hot midweek, showers with mild temperatures at week's end

(All Rights Reserved, Yankee Publishing Incorporated, Dublin, NH 03444)

## Eighty-Four Livestock

Eighty-Four, Pa.

Monday, Aug. 25

Report supplied by PDA

**CATTLE** 407. Compared with last Monday's market: Slaughter cows steady. Few Choice slaughter steers 56.25-58.00, Good 51.25-56.00, few high yielding 57.50, Standard 47.50-52.00, few Utility 39.25-45.00. Few Choice slaughter heifers 54.00-57.00, Good 49.70-53.50, Standard 41.25-46.00, Utility 36.50-41.00. Breaking Utility and Commercial slaughter cows 36.00-39.50, few 41.00, Cutter and Boning Utility 33.50-37.00, Canner and Low Cutter 29.00-34.00, Shells down to 18.00. One Good slaughter bullock 52.50. Yield Grade No. 1 1000-1800 lbs. slaughter bulls 42.50-48.50, No. 2 900-1400 lbs. 38.00-42.50. Feeder Cattle: Medium Frame No. 1 320-550 lbs. steers 60.00-75.00; Medium Frame No. 1 300-600 lbs. 48.00-58.00; Medium Frame No. 1 320-600 lbs. bulls 55.00-68.00.

**CALVES** 271. Few Choice

vealers 70.00-80.00, Good 63.00-70.00, Standard and Good 90-120 lbs. 44.00-50.00, 60-85 lbs. 38.00-46.00, few Utility 50-80 lbs. 20.00-38.00.

**FARM CALVES:** Holstein bulls 90-120 lbs. 56.00-89.00.

**HOGS** 191. Barrows and gilts mostly \$1 lower. US No. 1-3 208-245 lbs. 61.00-62.00, 2-3 220-270 lbs. 55.00-59.00, lot 2-4 245 lbs. 50.00. US No. 1-3 400-650 lbs. sows 54.00-57.00, 2-3 350-750 lbs. 47.00-50.00. Boars 35.00-46.00.

**FEEDER PIGS** 35. US No. 1-3 20-30 lbs. feeder pigs 18.00-23.00, 40-55 lbs. 37.00-50.00, few 75-80 lbs. 70.00-73.00, lot Utility 19 lbs. 10.00—all per head.

**SHEEP** 313. Spring slaughter lambs \$2 to \$4 lower. High Choice and Prime 80-100 lbs. 63.00-68.00, lot 125 lbs. shorn 62.00, Choice 80-95 lbs. 60.00-63.50, Good and Choice 55-75 lbs. feeder lambs 63.00-70.50, one small lot 76.00. Slaughter sheep 26.00-36.00.

**GOATS** 9. 10.00-36.00—all per head.

## New Holland Sales Stables

New Holland Dairy

Wednesday, Aug. 27, 1986

Report supplied by auction

Reported receipts of 75 cows, 55 heifers and 3 bulls. Market Steady.

Load of PA fresh cows, 550.00-735.00.

Load of PA fresh cows, 640.00-780.00.

Load of PA fresh cows, 560.00-820.00.

Load of Massachusetts fresh cows, 670.00-1425.00, springers 750.00-1050.00.

Load of PA fresh cows, 890.00-1125.00.

Springing heifers 480.00-860.00.

Open heifers 275.00-400.00.

Bulls 550.00-585.00.

Locally consigned cows 340.00-500.00.

## Omaha Weekly

Thursday, Aug. 28

Report supplied by USDA

Slaughter steers and heifers closed this week steady to 50 cents lower than last week's closing levels. Trading was marked by good buyer demand throughout the week. Dressed beef and boxed beef price declines prompting buyers to be bearish in their bidding but seller resistance to sharply lower bids was evident as some recovery was noted on Wednesday. Slaughter cows and bulls 2.00

lower.

Estimated 5 day receipts this week 4900 compared to actuals last week of 4089 and 6645 last year. Slaughter steers accounted for 45 percent of receipts, heifers 41 percent, cows 9 percent and feeder cattle 3 percent.

**SLAUGHTER STEERS:** Closing sales choice 2-4 1050-1300 lbs. 59.00-60.75. Mixed good and choice 2-3 1050-1250 lbs. 57.00-58.00.

**SLAUGHTER HEIFERS:** Closing sales choice 2-4 950-1100 lbs. 57.50-59.50. Mixed good and choice 2-3 925-1050 lbs. 55.00-58.00.

Average of LS 214 detailed price quotations for choice 900-1100 lb. steers 58.75, 1100-1300 lbs. 59.83. Average cost of all slaughter steers this week 58.39, average weight 1167 lbs. compared to 59.37 and 1166 lbs. last week. Average cost of all slaughter heifers this week 57.80, average weight 1031 lbs. compared to 58.60 and 1031 lbs. last week.

**SLAUGHTER COWS:** Breaking utility and commercial 2-4 35.50-38.25. Cutter and boning utility 1-3 34.00-38.00, few high dressing to 39.25. Canner and low cutter 29.00-35.00.

**SLAUGHTER BULLS:** Few 1-2 1500-1900 lbs. 44.00-47.50, low dressing 42.00-45.00.

## Chambersburg Livestock

Chambersburg, Pa.

Thursday, August 28

Report supplied by PDA

**CATTLE:** 259. Cows weak to .75 lower; few Good & Choice holsteins 45.75-49.25; few Standard 42.00-46.00; few Choice heifers 49.50-55.00; few Standard 38.00-41.50; Breaking Utility & Commercial cows 35.25-40.35; Cutter & Boning 34.00-37.50; Canner & Cutter 30.85-34.00; few YG No. 1, 1200-1675 lb. bulls 43.00-46.85; few YG No. 2, 1000-1150 lb. 41.00-42.60.

**FEEDER CATTLE:** Heifers few Med. No. 1, 400-600 lb. 41.50-49.50.

**CALVES:** 435. Vealers steady to 2.00 higher; few Choice 64.50-83.50; few Good 50.50-65.00; 85-105 lb. 44.00-48.00; 65-85 lb. 42.00-45.00; holstein bulls 90-135 lb. 46.00-91.00; mostly 75.00-89.00; heifers 90-120 lb. 48.50-71.00.

**HOGS:** 30. US No. 1-3 sows 300-475 lb. 51.00-53.50; 485-600 lb. 54.00-56.75.

**FEEDER PIGS:** 15. 2 lots No. 1-3, 25 & 35 lb. 19.50 and 31.50; lot 75 lb. 47.00.

**SHEEP:** 12. Few Good & Choice 55-115 lb. 52.50-58.00; lot Utility 75 lb. 46.00; few sl. ewes 18.50-22.00.

**GOATS:** 2. 39.00-46.00.

## Seeking Profits In Commodities Trading?

- Hedging
- Speculating
- Managed Account
- Commodity Options

Call Forney Longenecker, Commodities Investment Executive, At (717) 295-8914

**SHEARSON LEHMAN BROTHERS**  
29 E. King St.  
Lancaster, PA 17603



## York County Livestock Sales Ltd.

P.O. BOX 243 • FAWN GROVE, PA 17321

(717) 993-2564

Saturday's Hay Sale Canceled Until Further Notice

York County's Only Livestock Auction

On PA Route #24 between Stewartstown and New Park

All Kinds of Livestock Sold on Commission  
GWALTNEY OF SMITHFIELD

Open Every Monday - Hogs - 6:00 a.m. - 12 noon  
Auction - 7:00 p.m.

Buyers - Livestock Producers - Farmers  
We Need & Appreciate Your Patronage

**Stan & Mary Nagle - Owners**  
Home Phone: (215) 566-3239

## TOP PRICES FOR DOWN, CRIPPLED AND AS IS COWS, BULLS & STEERS

Slaughtered Under Federal Inspection  
Paid On Dressed Weight

Tom Mulvaney  
Livestock Trucking  
(201) 454-4247

**HANDLING:**

Warren, Hunterdon, Sussex  
And Somerset Counties, New Jersey

**IN PENNA:**

Northampton,  
Bucks, Lehigh  
And Parts Of  
Carbon & Schuylkill  
Counties



## ATTENTION FARMERS

EVERY MONDAY  
**HATFIELD PACKING CO. and MOYER PACKING CO.**

Will Receive Your Hogs and Cattle at the  
**DANVILLE LIVESTOCK MARKET**  
RD 4, Danville, PA

- We will receive your hogs from 8 AM to 12 Noon every Monday. Your hogs will be weighed and paid for immediately.
- We will also accept your sows & boars.
- Your cattle will be received from 12:30 to 5 P.M. We will either pay you for your cattle immediately or you may sell them dressed weight.
- There will not be a commission or yardage fee deducted from your check
- You may call our office Monday morning and we will be able to tell you the base price for hogs for the day.

**MELVIN M. LEHMAN - Owner**  
Danville Buying Station

**Phone: 717-275-2880**

## ATTENTION CATTLE FEEDERS

## GRADED SALE

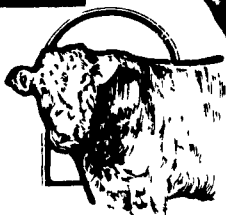
Friday, Sept. 5  
11 AM

• 150 Head Local Acclimated Cattle.

**Walter M. Dunlap and Sons**

Lancaster Stockyards Tel. (717) 397-5136

An Old Line Commission Firm Keeping Abreast With The Times



## ATTENTION LIVESTOCK PRODUCERS

WE ARE EXTENDING OUR FORWARD CONTRACT DEADLINE FOR OCTOBER DELIVERY THROUGH 2:00 PM ON SEPT. 5th  
Extension applies for both hogs & cattle!!

Call For Updates On Price And Basis:  
717-761-2740  
800-382-1356



**CFS**

PFA COMMODITY FUTURES SERVICE, INC.

## SWINE PRODUCTION SALES AND SERVICE

Complete Feeding Programs and Services

Feeding Programs to Meet Your Individual Needs

Computerized Record Keeping System

Providing Veterinarian Service

PA. Toll Free  
1-800-468-5524



419 W. High Street  
Elizabethtown, PA  
17022

Supplying Farm Fresh Feeder Pigs

Marketing and Hedging Services

Marketing of Genesis Breeding Stock

Developing Individual Financial Programs

Direct Dial  
(717) 367-1525