

Frederick Co. Hay

Buckeystown, Md.
Thursday, Aug. 28, 1986

Report Supplied by Auction

36 loads. Market steady on all grades, demand fair.
Alfalfa, 13 lds. good to better 112.00-140.00; 4 loads fair some high moisture 90.00-100.00; Alfalfa Mixed: 2 loads, fair to good 108.00-131.00; Timothy: 6 loads, fair to good 97.00-120.00; 2 loads dark 70.00-85.00; Mixed Hay: 4 loads fair to good 90.00-111.00; Straw: 3 loads birght wheat 85.00-105.00; 2 loads oat straw 81.00-87.00.

Leinbach's Hay

Shippensburg, PA
Tuesday, Aug. 26, 1986

Report supplied by Auction

31 loads hay & corn.
Alfalfa 60.00-109.00; Mixed Hay 48.00-101.00; Timothy 85.00-92.00; Ear Corn 60.00-68.00; Rye 3.30/bu.; Mulch Hay (1 load) 29.00.

King's Hay

Kirkwood, Pa.
Tuesday, August 28, 1986

Report supplied by auction

22 loads, most baled recently, not mild. Alfalfa, 83.00-105.00; Alfalfa Mixed, 66.00-103.00; Mixed Hay, 1 load, 85.00; Straw, 2 loads, 74.00-80.00; Ear Corn, 5 loads, 65.00-69.00.

Dewart Hay

Dewart, PA.
Monday, Aug. 25, 1986

Report Supplied by Auction

17 loads.
Hay: 53.00-88.00; Straw: 48.00-52.00; Firewood: 33.00 (1 load); Ear Corn: 61.00-69.00.

Belleville Hay

Belleville, PA
Wednesday, Aug. 28

Report supplied by Auction

Alfalfa (6 loads) 72.50-80.00; Mixed Hay (12 loads) 40.00-82.50; Straw (2 loads) 55.00-60.00; Ear Corn (2 loads) 65.00-70.00.

Carroll Co. Hay

Westminster, MD
Tuesday, Aug. 26

Report supplied by Auction

15 loads.
Alfalfa: 100.00-135.00, some dark 62.00; Timothy: 1 load 80.00; Orchard Grass/Timothy: 62.00-92.00; Clover/Timothy: 61.00-100.00, 1 load 2nd cut 112.00; Alfalfa/Timothy: 110.00-132.50; Alfalfa/Orchard Grass: 1 load 125.00; Straw: 1 load 88.00.

Jersey Shore Livestock Market, Inc.

Auction every Thursday
Aug. 28, 1986

Jersey Shore, Pa.

Report supplied by Auction

Return to Farm Calves 50.00-80.00.
Good Veal 50.00-65.00.
Common Veal 30.00-49.00.
Choice Steers 58.00-63.75.
Good Steers 53.00-57.00.
Common Steers 41.00-52.00.
Commercial Cows 34.00-40.00.
Canners-Cutters 33.00-37.00.

Shells 21.00-32.00.
Choice Heifers 55.00-60.00.
Good Heifers 52.00-56.00.
Common Heifers 40.00-51.00.
Good Feeders 58.00-63.00.
Common Feeders 30.00-57.00.
Bulls 41.00-58.50.
Good Hogs 60.00-63.00.
Heavies 45.00-59.00.
Sows 45.00-49.00.
Lambs 60.00-61.00.
Eggs \$.78-.90/doz.

Indiana Livestock

Homer City, Pa.

Thursday, August 28

Report supplied by PDA

CATTLE: 158. Steers mostly .50 higher; cows steady to strong; Choice steers 57.50-61.50; Good 52.00-56.50; Standard 45.25-51.00; few Choice heifers 55.00-57.00; few Good 50.00-54.50; Standard 43.00-47.0; Breaking Utility & Commercial cows 36.00-38.50; Cutter & Boning 33.50-37.00; Canner & Cutter 27.00-33.75; YG No. 1, 1200-1900 lb. bulls 44.00-49.00; few No. 2, 950-1250 lb. 39.00-43.00.

FEEDER CATTLE: Steers Med. Frame No. 1, 300-600 lb. 51.00-60.00; heifers Med. No. 1 few 300-550 lb. 42.00-52.00.

CALVES: 139. Few Choice 58.00-60.00; Good 51.00-57.00; 90-120 lb. 42.00-50.00; 60-85 lb. 34.00-43.00; holstein bulls 90-125 lb. 52.00-65.00.

HOGS: 251. 1.00 lower; No. 1-2, 220-240 lb. 62.50-63.25; No. 1-3, 205-235 lb. 61.00-62.00; No. 2-3, 240-270 lb. 57.00-60.25; No. 1-3, 115-160 lb. 54.00-60.00; US No. 1-3, sows 380-600 lb. 55.00-58.00; No. 2-3, 350-550 lb. 53.00-55.50.

FEEDER PIGS: 40. Lot 1-3, 35 lb. 30.00 per head.

SHEEP: 43. 2.00-4.00 higher; High Choice & Prime 85-95 lb. 64.00-68.50; Choice 80-90 lb. 59.00-64.00; Good & Choice 55-70 lb. feeder lambs 62.00-66.00; sl. sheep 18.00-23.00.

GOATS 9. 15.00-36.00 per head.

Green Dragon Livestock Sales

Location: Ephrata RD 4. 1 mile N. on North State St., Ephrata.

COWS COWS COWS

SALE EVERY FRIDAY

Lots of good Northern Feeder & Stockers Slaughter Cows - Bull Steer, Veal-lamb

11:00 A.M.-Beef Sale 200-300 each week.

1:00 P.M.-Dairy Sale.

7:00 P.M.-Small Animal Sale.

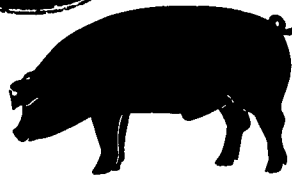
For Special Sales and Herd Dispersals on farm or at our barn or other market information call: Office 717-733-2444, Home 717-838-4318.

WALTER H. RISSER, Proprietor

All out of state and new buyers must have cash or certified check or current letter of credit from bank.



GWALTNEY of SMITHFIELD, LTD.



RECEIVING HOGS:

LANCASTER COUNTY FARMERS

MONDAYS: McCoy's Branch Office, Bareville
WEDNESDAYS: (Next to Bawells Butcher Shop)
& FRIDAYS: on Butler Rd. 717-656-9668

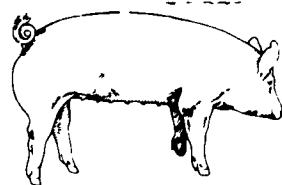
TUESDAYS: B & R Cattle
THURSDAYS: Marietta 717-426-3258

YORK COUNTY FARMERS

MONDAYS: Stewartstown 717-993-2564

TUESDAYS: Thomasville 717-792-2248 or 9836
Contact for information:

Ed Herrmann, 717-284-3203
or Charlie Kauffman, 215-593-5674
Future forward contracts available



EMERY'S BUYING STATION

OPEN TO RECEIVE YOUR MARKET HOGS

AT THE GREEN DRAGON MARKET RD 4, EPHRATA, PA 17522 1 MILE NORTH OF EPHRATA ON NORTH STATE STREET.

HOURS: MONDAY, TUESDAY, and WEDNESDAY 6:00 A.M. to 11:30 A.M.
215-458-5677 Residence
717-733-9648 Office

YOU ARE PAID FOR YOUR HOGS IMMEDIATELY

Ken & Lois Emery, Proprietors

KING'S AUCTION KIRKWOOD

Hay, Straw and Grain Auction
EVERY TUESDAY 12:00

Located Rt 472 5 miles south of Quarryville or 6 miles north of Oxford at Shaub's Auction House

Lloyd H Kreider

Auctioneer

AU-000513L

No out of state checks

ALL TRUCKERS AND FARMERS WELCOME

HAY & STRAW SALE

12:00 Noon

Every Wednesday Westend of Avondale at the intersection of Baltimore Pike and Route 41.

Harvey Z. Martin
215-268-3604 (Office)
215-445-5303 (Residence)

MELHORN SALES, SERVICE, TRUCKING CO.

1010 W. Main St., Mount Joy, PA 17552

The only full service company, in this area, to handle the total needs of the poultrymen.

Which Includes:

- Area distributor of a complete line of Bio-Guard Poultry & Swine sanitation products. Including: sow shampoo, field disinfectants, hatchery disinfectants, egg wash.
- DEKALB chicks & started pullets sold by Nelson Groff & Harold Mishler.
- Complete loading & unloading of pullets & spent hens.
- New modern dollie equipment to move your pullets fast and efficiently with minimum stress to the pullets.

Place Your Confidence In A Full Service Company That Wants To Be Worthy Of Your Business

For More Information Phone:

717-653-1102

Monday - Friday 8:30 AM - 4:00 PM

