

Public Auction Register

AUCTION SERVICE
PUBLIC AUCTION
FALL FARM EQUIPMENT AUCTION
SATURDAY, SEPTEMBER 20th, 1986
 10:00 A.M.

12th Annual Equipment Auction
 Consign Your Equipment Now! Call (301) 658-6400. Call Early So We Can Advertise In Advance For Better Results. Sell The Auction Way. The Auction That Has Proven Results And Experience.

Inviting: Lumber, Tractors, Vehicles, Industrial Equip., Tools, Posts, Wire, Lawn & Garden Equip., All Types Farm Equipment.

Hurry Phone (301) 658-6400 Today Consign Your Equip.

TERMS: Cash-Check If Established With Auction Firm Only.

Auction Held At:
 Hunter's Sale Barn, Inc.
 Rt. 276, Phone (301) 658-6400
 Rising Sun, MD 21911
Auctioneers: Norman E. Hunter - Chris E. Hunter
 Hauling Available - Restaurant On Grounds
 "Cecil County's Leading Auction Service"

SAT. SEPT. 6 - 10AM Hay Sale. On PA Rt, 24 between Stewartstown & New Park. York Co. Livestock Sales Ltd Stan & Mary Nagle, Owners.

SAT. SEPT. 6 - 10AM Farm Equip Personal

Property Livestock. Going W. 1/2 Wyoming, DE, to Hazlettville on Rt. 52 (same as Rt. 206), 2nd farm on right after going thru Hazlettville. Freeman Coblenz, Owner. Wilson's Auct. Sales, Inc

SAT. SEPT. 6 - 11AM 90 Head Reg. 3 Grade Holstein Dairy Cattle. Dell A. Clawson, RD 3, Blairsville, PA. On Rt. 982, 2 mis. N. of New Derry, 3 mis. S. of Rt. 22 (Sundial). Dell A & Betty

L. Clawson, Owners. L.H. Kuznik & J.L. Henry, Aucts.

SAT. SEPT 6 - 1PM 2 Acre Farmette. Personal Property. RD 4 Denver,

Rt. 272 N. of Ephrata to traffic light at Reamstown. Turn left to Denver, turn right at Ephrata National Bank Branch to stop sign turn left on Monroe St. to property on left. By: Earl K. & Patricia L. Hertzog. Randal Kline, Lloyd Kreider & Roy Good, Jr., Aucts.

2-DAY

ANTIQUE AUCTION

Troxelville Auction Gallery
Troxelville, PA
TUESDAY & WEDNESDAY,
SEPTEMBER 2 & 3, 1986
 10 a.m. Daily

Located from Harrisburg, PA: Take Rt. 15 N., go to Rt. 104, left to Middleburg, go left at light at square onto Rt. 522 to Beaver Springs, turn right onto Rt. 235, 4 mis. to auction.

For info: 717-658-7141

Tuesday, September 2: selling primitives, country items, smalls & glassware.

Wednesday, September 3: selling large furniture & oak, walnut, mahogany & depression.

Auctioneers:
 C.P. Jacobs, Jr.
 #AU00233-L
 Roy L. Martin
 #AU00058-L
 Sales Manager, Joe Herman

Next Antique Auction September 16 & 17 Starting 10 a.m.

"Former Red Run Hotel"
PUBLIC AUCTION

OF VALUABLE REAL ESTATE, HOUSEHOLD GOODS & ANTIQUES
SATURDAY, SEPT. 13, 1986
 AT 10:00 A.M.

On the premises known as "Former Red Run Hotel" on the corner of Red Run Rd. and Fivepointville Rd., Route 1, Stevens, Brecknock Twp., Lanc. Co., Pa.

REAL ESTATE: All that certain tenement and tract of land (formerly known as "the Red Run Hotel") situated in Brecknock Twp., Lanc. Co., Penna. Containing 4 Acres and 138 Perches. Having a 2 1/2 Story Stone and Frame Home Erected thereon, Containing 12 Rooms including 7 Bedrooms & Bath, 2 Kitchens, Dining Area, and 2 Living Rooms, Semi Bath on first floor, Laundry and Pantry. Lots of Room. 2 Furnaces 1 Hot water and 1 Hot Air thus lending itself readily to a two family unit. Well water. Recently Installed Pump and on the lot Sewer. Also a 30'x30' Frame barn with tin roof. Frontage on both Roads. A property with lots of potential; better look this one over. Conditions day of Sale. R.E. at 1:00 P.M.

For Inspection Call the undersigned for appointment at 445-5331.

Lunch Available
 Auction By
CLARENCE KEMPER, SR.

H.H. Leid Auction Service
 John H. Fry, Auct. 733-3606
 Au-306-L

SEPTEMBER

FRI., SAT., SUN. SEPT. 5, 6, 7 - 12th Annual Nittany Antique Machinery Association, Inc., of Central Penna. Show. Penns Cave, Rt. 192, E. of Centre Hall, PA.

MON. SEPT. 8 - 10AM Lebanon Valley Auction Co. Fall Machinery Auction. Lebanon Area Fairgrounds, Lebanon, PA. Harry H. Bachman, Auct.

MON. SEPT. 8 - 4PM Real Estate, Collector Bottles, HH. 255 Tannery Rd, W Cocalico Twp., Lanc. Co PA. By: Carl A. & Loraine F. Steingraber. T. Glenn & Timothy G. Horst, Aucts.

MON. SEPT. 8 - 5PM Good's Meats Auction of Butcher Eq., Trucks. Take Rt. 625 to Bowmansville. In Bowmansville turn W onto Maple Grove Rd. Go 1 mi. to property on left. Lanc. Co., PA. Kline, Kreider, & Good, Jr., Aucts.

TUES SEPT 9 - 10AM 65 Milking Animals, Machinery. Located 9224 Devilbiss Bridge Rd. in Frederick Co., MD. From Walkersville take Rt. 194 N., turn left on Devilbiss Br Rd. (first rd. on left), farm is first farm on the right. From Rt. 15 N. of Frederick turn on Devilbiss Br. Rd. near Sire Power headquarters. Merhle & Frances Duvall, Owners. Remsburg Sale Service.

G. LESTER & MARY A. WHITE

PUBLIC AUCTION

REAL ESTATE— ANTIQUES— HOUSEHOLD GOODS— TOOLS

SATURDAY, SEPTEMBER 6, 1986

AUCTION TIME: 9:30 A.M. REAL ESTATE: 2:00 P.M.
3.607 ACRES ZONED N. COMMERCIAL

LOCATED AT 1800 WEST MAIN ST., EPHRATA, ALONG ROUTE 322, CLAY TOWN-SHIP, LANCASTER COUNTY, PA.

MAYTAG WASHER; Hardwick Gas Range; White Sewing Machine; Electrolux Vacuum Cleaner with Power Head; Kneehole Desk; Metal Desk and Drawer; Child's Swing; Playpen; Double and Single Beds; Child's Table and Chairs; School Desks.

1852 MILLER SHOW TOWEL
1835 EBERLEY SHOW TOWEL
WICKER DOLL COACH

2 Brass Buckets; Pewter Teapot; Copper Teapot; Beveled Hall Mirrors; Washboard; Agate Chick Waterers; Flat Irons; Jugs and Crocks; Tin Ware; Rug Beater; Copper Wash Boiler; Jars; Pictures and Frames; Round Wooden Box; Gas Light; Brass Hanging Light; Iron Kettles; DEPRESSION GLASS; NORITAKE; CARNIVAL GLASS; PINK HEISEY Relish Dishes; Mustache Cup; Pressed Glass; Veg. & Fruit Dishes; China Set; Hull Vases; Mantel Clock; Other Clocks; Britannica Encyclopedia Set; Webster Dictionary; Lot of Books; Old Phone Directories; Quilts; Fabrics, Linens, and Misc. Housewares.

WINCHESTER MODEL
58 22 RIFLE
12 GA. SINGLE BARREL
w/410 INSERT
GRAVELY RIDING MOWER

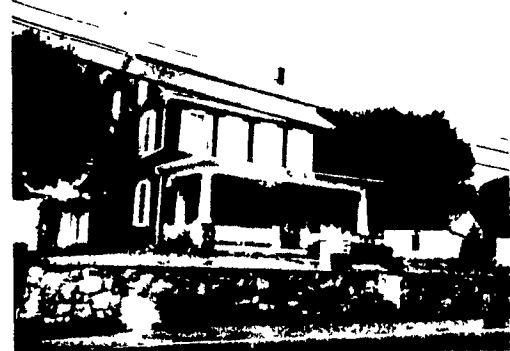
w/Electric Start; Merry Tiller; Lawn Spreader; Wheelbarrow; HORSE DRAWN Farm Wagon; Wooden Land Roller; 2 Section Spring Harrow; 2 Ext. Ladders; Table Saw; Digging Iron; Picks; Grinder; Log Chains; Scales; Stepladder; Shovels; Hoes; Rakes; Scythes; Pitcher Pump; Beam Scales; Baskets; Lumber; Saws; Rigid Pipe Cutter; Pipe Wrenches; Tobacco Spears and Shears; Corn Chopper; Croquet Set; Wire; POLE CLIMBING GEAR; Misc. PHONES, Parts and Test Sets.

ORDER OF AUCTION: Tools, Followed By Small Household Items, Furniture, Real Estate at 2:00 P.M.

AUCTION BY:
G. LESTER AND MARY A. WHITE
 1800 W. Main St., Ephrata, Pa.

AUCTION CONDUCTED BY:
J&P AUCTIONS
PAUL E. MARTIN AUCT.
 AU001600-L
 EPHRATA, PA. 717-733-3511
JOHN D. STAUFFER, AUCT.
 AU001509-L
 LITITZ, PA. 717-665-5099

FOOD AT AUCTION



2 1/2 STORY FRAME DWELLING

Containing on First Floor: Large Kitchen, Laundry Room, 1/2 BATH, Sewing Room, Living Room, Family Room, Second Floor Has FOUR BEDROOMS, Bath, Balcony, Full Attic Area. Basement with Cement Floor and Cold Cellar. COAL FIRED Hot Water Baseboard Heat, Auto. Feed, S/W Hookup.

- * MACADAM DRIVE
- * LARGE BARN
- * 3 CISTERNS
- * ON LOT SEWER
- * 138 FEET FRONTAGE
- * MATURE SHADE
- * GARAGE AREA
- * PRESSURE SYSTEM
- * DOUBLE STAIRWAYS
- * 823 FEET DEPTH

NOTE: If you are looking for an INVESTMENT or a PROPERTY for COUNTRY LIVING, CHECK OUT the MANY POSSIBILITIES of this one, at an EXCELLENT LOCATION, ZONED NEIGHBORHOOD COMMERCIAL.

OPEN HOUSE: Saturday, August 23 and August 30, from 12:00 noon to 3:00 p.m., or for private showing now, call PAUL E. MARTIN at 717-733-3511.

TERMS: 10% Down Day of Auction. Balance at Settlement in Approximately 60 Days. All herein Information Is Believed To Be Accurate, But Is Being Used For Advertising Purposes Only.

MICHAEL P. KANE, ATTORNEY
OAK PEDESTAL
EXTENSION TABLE

with 6 Boards; Jelly Cupboard; Marble Top Cupboard with Dutch Cupboard Type Top; 4 Rope Beds; One with High Headboard; Cedar Chest; Clothes Trees; 4 Leg Gate Leg Dropleaf Table; Dovetailed Woodchest; 2 Wash Stands; Six Arrow Back Chairs; Two Chest on Chests; Oak Chest of Drawers; Two Cane Seat Chairs; Rockers; Dressers; Trunk; Small Tables; Bench; Library Table; Nine Piece DINING ROOM SUITE; Bookcase; Rocker-Recliner; Sofa Bed; Glider; Frigidaire Refrigerator; Chest Freezer; Radio; Record Player;

PUBLIC AUCTION

ANTIQUES; FURNITURE; CLASSIC CARS;
GAS ENGINES BREWERIANA PCS.;
FARM EQUIP.; LUMBER

FRIDAY, SEPT. 5, 1986
 at 4 P.M.

Location: Werleys Corner Hotel. From Rt. 22 at Fogelsville turn North onto Rt. 100 continue 5 miles to rd. divider, turn left onto Holben Valley Rd., proceed for 2 1/2 miles to Hotel.

FARM EQUIP. & LUMBER: New Idea #206 - 3 beater ground driven manure spreader (like new); Ford 3 pt. 2 bt plow; Ford 3 pt 6' sickle mower; 3 pt rotary cutter; 9 round Pride of the Farm hog self feeders; 12,000 belt driven generator; Acme 1 horse farm wagon; 1 horse sleigh; 1 horse corn planter; walking cultivators; Fairbanks platform scale; rototiller; rotary mower; ci water & hog troughs; wooden troughs; folding garage doors; new & used wooden frame windows; large wooden spools; shop creeper; slate tools; few hand tools; elec. paint sprayer; elec. supplies; new & used lumber incl. walnut, oak & white pine.

FURNITURE: Oak round ped ext table; Oak sq. ext. table; 4 redec. 1/2 spindle back plank seat chairs; 8 asstd redec. plank seat chairs; set of 6 Oak chairs; ladder back rush seat chair; pressed back chair; 2 high chairs; nursing rocker; 3 camel back trunks; White treadle sewing machine; 2 pot belly stoves; flat top desk; 2 Oak dressers; end tables; Cheney record player; 5 reed porch rockers; porch benches; school desk; library & occ. tables; sausage-lard press; butcher bench; butcher block; meat grinder; wooden ironing boards; sail ship smoking stand.

ANTIQUES ETC.: Split oak baskets; crocks & jugs; old metal trucks; ammo boxes; teakettle; brass dipper; cherry stoner; clamp on corn sheller; corn cracker; wooden sausage stuffer; adv. lard cans; lanterns; sponge molds; mantel clocks; ci butcher truck bell; straw baskets; 2 elec clock w/horse clocks; rag carpets; lap blanket; blue checked bolster cover; 3 Express wagons; calculator cash reg.

BREWERIANA PCS: Daeufer's 19"x28" reverse painting on bow glass sign; Daeufer's thermometer-mirror; Daeufer's litho; 3 Old Dutch lighted signs; 5 clocks incl. Horlacher; Old Dutch, Neuweilers & Ballentine; dozens of trays incl. Daeufers, Neuweilers & others; Neuweiler beer boxes, coasters, bottles, mug & ash trays; Old Reading sign; Pepsi, Piels & Kaiers thermometers; beer tap knobs & glasses; Michelob neon; Wayne feed sign; 2 Wild Turkey decanters.

GAS ENGINES & TRACTOR: 1926 Fordson tractor on steel; 2 hp Hercules hit & miss eng.; 1 1/2 hp Associated hit & miss eng.

CARS & TRUCKS: 1949 Chrysler 5 pass. coupe (needs work); 1958 Oldsmobile 4 dr, V8, auto, PS & PB (good cond); 1959 Rambler 4 dr. 6 cyl, auto (good cond); 1968 Lincoln 4 dr, V8, loaded (good cond); 1966 Ford pickup (good cond); mid 30's Chevy pickup (less body needs work); 1949 Packard hub caps w/ruby inlay.

Order of Auction: 4 PM antiques & small pcs; 6 PM breweriana pcs; 6:30 furniture; 7 PM cars, engines, lumber & farm equip.

Terms—Cash or Pa. Check

Ordered by
STERLING & FLORENCE ZIMMERMAN

Conducted by
Ralph W. Zettlemoyer Auction Co., Inc.
 (215) 395-8084
 Pa. License #AU-001809-L

Refreshments Available

PO Box 215 • Fogelsville PA 18051 • 215-395-8084 • License #AU001809-L

RALPH W. ZETZLEMOYER AUCTION CO. INC