

# Westmoreland Fair Lists Beef, Sheep Champions

BY MARGIE FUSCO

**Cambria County Correspondent**  
**GREENSBURG** — Heath Lilley of Donegal took home the grand champion blanket for this 1205 Chi cross market steer during the 1986 4-H/FFA Market Steer competition held at the Westmoreland County Fair, Aug. 17 to 23.

Reserve honors went to Becky Shearer of Greensburg with her Angus Cross steer, weighing in at 1,255 lbs.

The winners for the 1986 Steer Show are:

Champion Lightweight  
 Loretta Binkey



The grand champion market steer, a 1,205-pound Chianina cross, was exhibited by Heath Lilley of Donegal.

## Farmers Urged To Report Drought Stricken Crops To FCIC

**HARRISBURG** — State Agriculture Secretary Richard E. Grubb recently reminded farmers with Federal Crop Insurance Corporation policies to report potentially covered losses to their FCIC agent before destroying or converting crops to other uses.

"Producers in drought stricken areas must do this even though the U.S. Department of Agriculture will allow them to salvage program crops for badly needed feed without penalty," Grubb noted.

Whether a crop is to be converted or destroyed, producers must report their intention to USDA through the local ASCS office and to FCIC, Grubb said.

E. Ray Fosse, manager of FCIC,

has notified the state that the agency can not waive the reporting requirement because it would impact directly on indemnity levels. However, FCIC will work with farmers to permit salvage harvesting.

Fosse has assured the state that FCIC will be as flexible as possible in permitting farmers to harvest while leaving loss adjustment strips.

Grubb said farmers in drought affected counties should call their crop insurance agent if they have questions regarding the operation of their policy in this situation.

Counties considered drought affected by USDA are York, Adams, Fulton, Franklin, Chester, Lancaster, Delaware, Dauphin, Cumberland, and Bedford.

Reserve Champion Lightweight

Heath Lilley

Champion Middleweight

Heath Lilley

Reserve Champion Middleweight

Ryan Shaw

Champion Heavyweight

Becky Shearer

Reserve Champion Heavyweight

Kris Long

Grand Champion

Heath Lilley

Reserve Grand Champion

Becky Shearer

Show and Fit

Age 15 and Up

1 Bill Shaw 2 Todd Lilley 3 Jeff Shaw

Ages 12-14

1 Jason McWilliams 2 Becky Bates 3 Kris Long

Ages 8-11

1 Ryan Shaw 2 Becky Shearer, 3 Jason Rice

Champion Showman and Fitter

Bill Shaw

Reserve Champion Showman and Fitter

Jason McWilliams

### SWINE

Swine raisers competed in market and breeding classes. Results are as follows.

#### OPEN BREEDING

Chester White

Champion Sow John Bronson

Reserve Champion Sow John Bronson

Duroc

Champion Boar William Hilty

Reserve Champion Boar William Hilty

Champion Sow William Hilty

Reserve Champion Sow William Hilty

Hampshire

Champion Sow William Hilty

Poland China

Champion Sow Paul Kohl

Reserve Champion Sow Joe Gardner Jr

Yorkshire

Champion Boar William Hilty

Reserve Champion Boar James Hilty

Champion Sow William Hilty

Reserve Champion Sow William Hilty

#### Spotted

Champion Boar James Hilty

Reserve Champion Boar James Hilty

Champion Sow James Hilty

Reserve Champion Sow James Hilty

#### 4-H/FFA BREEDING

Duroc

Champion Sow Lottie Trice

Reserve Champion Sow Lottie Trice

#### 4-H/FFA MARKET

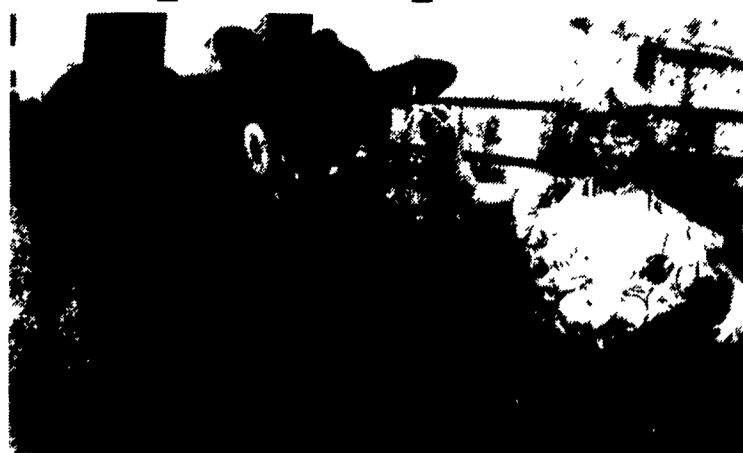
Lightweight

Champion John Ellison

Reserve Champion Craig Steele

Middleweight

Champion Chris Iapalucci



The reserve grand champion market steer, an Angus cross weighing in at 1,255 pounds, was exhibited by Becky Shearer.

#### Heavyweight

Champion Roy Berg

Reserve Champion Doug Sproat

#### Grand Champion

Chris Iapalucci

#### Reserve Grand Champion

Roy Berg

Show and Fit

Age 15 and Over

1 Roy Berg 2 Doug Sproat 3 Shari Gardner

#### Ages 12-14

1 Debbie Whetzel 2 Seven Steele 3 Rebecca Ott

#### Ages 8-11

1 Nettie Evanko 2 Lila Hughes 3 Melinda Kovac

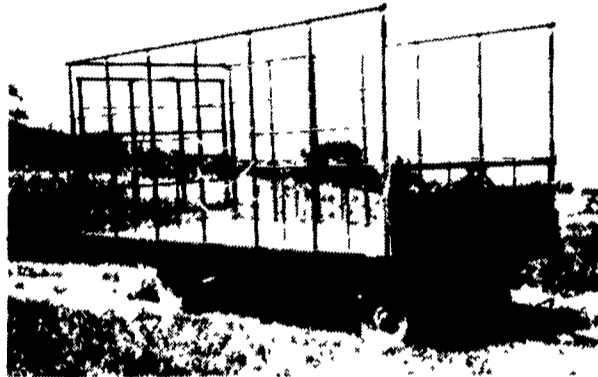
#### Champion Showman and Fitter

Roy Berg

#### Reserve Champion Showman and Fitter

Doug Sproat

## BEST BUY of the YEAR



- 6" Steel Main Beam
- 2" Vertical Tubing Drilled so that the 1" Horizontal tubing extends Full Length of Wagon
- Front-Side and Rear Loading and Unloading
- 2x8 Pressure Treated Lumber Floor
- 2x6 Oak Cross Beams
- Beds are 8' wide, available in 16, 18 or 21' lengths. Racks are 90" high.
- NEW FEATURE: 6" Channel across back for pushing wagon without damaging bed.

FOR FURTHER INFORMATION, CALL YOUR LOCAL DEALER:

#### LOST CREEK IMPLEMENT

Oakland Mill, PA  
 717-463-2161

#### MELROSE FARM SERVICE

Greencastle, PA  
 717-597-3138

#### KELLER BROS.

Lebanon, PA  
 717-949-6501

#### DUNKLE & GREIB

Mill Hall, PA  
 717-726-3115

#### WALTER G. COALE, INC.

Churchville, MD  
 301-734-7722

#### TOBIAS EQUIPMENT CO., INC.

Halifax, PA  
 717-362-3132

#### NORTHEAST DISTRIBUTING

West Clifford, Pa.  
 717-222-9020

#### VALLEY IMPLEMENT SALES

Harrisonburg, VA  
 703-434-9961

#### CHAMBERSBURG FARM SUPPLY

Chambersburg, PA  
 717-264-3533

#### OXFORD GREENLINE, INC.

Oxford, PA  
 215-932-2753

#### PAUL SHOVER'S, INC.

Loysville, PA  
 717-789-3117

#### A.B.C. GROFF

New Holland, PA  
 717-354-4731

#### CARLISLE FARM SERVICE

Carlisle, PA  
 77-243-4419

#### CLARK'S FARM SUPPLY

Williamsport, PA  
 717-494-0060

Manufactured By

## CLW MANUFACTURING, INC.

R.D. #2, Box 8  
 Newburg, Pa. 17240  
 717-423-6794

When You Think Seed Corn

THINK

CHEMGRO

We Are Distributors For  
 AGRIGOLD & CHEMGRO SEEDS

High Performing Varieties Proven In  
 This Area At Or Below Competitive  
 Prices

Dealerships Available: Call Now For  
 More Information (717) 569-3296

CHEMGRO FERTILIZER CO., INC.

Box 218 East Petersburg, PA 17520  
 (717) 569-3296