

RHINO...The Heavy-Duty Machine That Gets The Job Done At DISCOUNT PRICES!



The Do It All Cut And Finish
RHINO 76 & 77 DOUBLE OFFSET DISK
With or Without Wings

A Disk Harrow That Is Self-Leveling With A Flex Frame And C Clamp Flex Bearing Hangers



2 YEAR GUARANTEE ON QUADRASEAL™ ROLLER BEARINGS AND THE C CLAMP FLEX HANGER

If you want faster incorporation, better seedbeds, and less time in the field, Rhino Products R76 is the disk for you. The advanced Double Offset design lets you disk at faster speeds, vary the field speed on-the-go, and still leave a uniform level seedbed behind.



See In Action & On Display
The New Heavy Weight RHINO 200 SERIES DOUBLE OFFSET DISK Spring Bearing Hangers, 10'2" Cut w/a Midwest Buster Bar Attachment.

Ask About Our **SPECIAL SHOW PRICE**

RHINO CHISEL PLOWS YOU CAN AFFORD

- 5 Ft., 2 Bar
- 7 Ft., 2 & 3 Bar
- 11 Ft., 2 Bar

Great Quality At Good Prices



NONE BUILT HEAVIER!

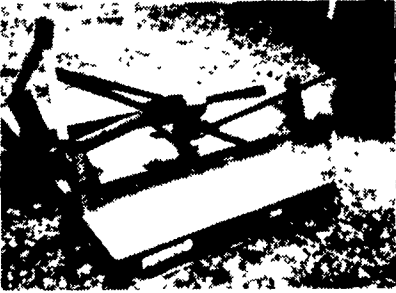
- 13'5" Width \$2,695
- 19'3" Width \$3,995

Flat rolling or rocky... you can depend on the 800 Field Cultivator to perform big and last for years! 9'11" to 47' 3" x 3" Mainframe 3 or 4 Bars High clearance Spring or S Tines Complete Hydraulics for lifting and folding QUADRASEAL • Wheel Hubs 7" spacing

100's of Rhino Disks, Chisels, Coulter Chisels, Blades And Cutters Are In Use In The Northeast AND FOR A GOOD REASON... LOOK!

RHINO SE SERIES ROTARY CUTTERS

- 4 Ft Model SE4, List \$525 SALE \$425
- 5 Ft Model SE5, List \$546 SALE \$495
- 6 Ft Model SE6, Shear Bolt Protection List \$929 SALE \$695
- 6 Ft Model SE6 w/Slip Clutch, List \$1029 SALE \$785
- 7 Ft Model w/Slip Clutch, Stump Jumper SALE \$1,199



RHINO HEAVY DUTY 8 FT. CUTTERS
Model Sat. 8, 8 Ft w/Slip Clutch No Stump Jumper List Price \$3,398
SALE \$2,485.00
Limited Stock

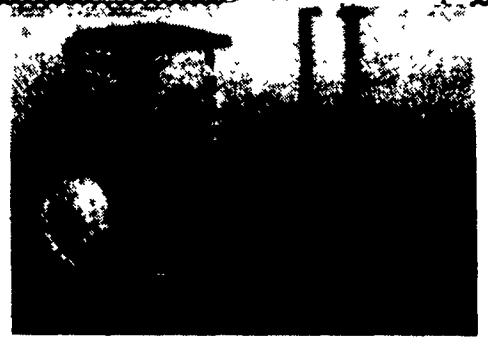
"RHINO" TOUGH ENOUGH FOR TRENCHING
3 Pt. HITCH BLADES
We Have Any Size Blade To Meet Your Tractor Power

MODEL	HP	WIDTH	SPECIAL PRICE
• LR	55	7'	\$498
• LR	55	8'	\$525
• BR	75	7'	\$855
• BR	75	8'	\$890
• 900	up to 100	8'	\$1050
• 900	up to 100	9'	\$1085

Ideal For Snow Removal, Barnyard Scraping, And Excavating or Terrace Work With The Big Ones!

BINKLEY & HURST BROS. INC.
SALES PARTS SERVICE

133 Rothsville Station Rd.
Lititz, PA 17543
Located 1/2 Mile North of Rothsville
(717) 626-4705
Hours: Mon-Fri 7 AM-5 PM, Sat 7 AM-11:30 AM, Sun Closed - Lord's Day



JD 4430 QR Dual HD, Good Rubber \$8,750
Call **(717) 733-4313**



Performance for the Long Run.



That's what makes Yanmar diesel tractors the choice among value-conscious owners. Every Yanmar diesel tractor is built from the ground-up to deliver the kind of long life and dependability you expect. And Yanmar's smooth fuel-squeezing diesel engine delivers that extra performance to pull you through even the most demanding work.

- Choose from 12 models 14 to 33HP
- Choose 2 or 4 wheel drive
- Experience Yanmar's exclusive finger tip shuttle power shift
- Check Yanmar's long list of standard features

Test drive a Yanmar today, and be ready for the long run



Tractors and Implements More than You Expect

MARTIN HARDWARE & EQUIPMENT CO. INC.
Rt 501 1 1/2 Miles South of Schaefferstown PA
PHONE (717) 949 6817
Mon Wed Sat 8 to 4 Tues Thurs Fri 8 to 6

IH 175A Crawler Loader, runs good.
\$7,500
Ask For Dennis
717-328-2881

1 FARM EQUIPMENT

NEW EQUIPMENT SPECIALS

Cash-No Trade Prices FOB Silverdale, PA

- JD 8200, 21x7 Plain Drill, Double Disk Openers, 20" Double Rib Tires, \$4,400
- JD 712 Mulch Tiller, 13'9", Spring Standards, new tires, \$8,500
- JD 1610 Chisel Plow, 8' Spring Trip Standards, \$1,800
- JD 1010 Field Cultivator, 3 pt., 12 1/2', \$1,725
- NH 316 Baler, Twine Tie, \$7,250

I.G. SALES

Silverdale, PA 18962
215-257-5135

DeLAVAL JAMESWAY



Quonset Buildings

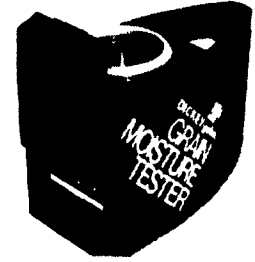
DICKEY-john DjGMT Grain Moisture Tester



The DICKEY john Grain Moisture Tester measures moisture content automatically. You don't have to preweigh the sample. There are no meters to read, no dials to set, and no thermometers to lose. As soon as you pour in the grain sample, the testing sequence begins. A digital readout is displayed when the proper weight of the sample has entered the test chamber. The readout is corrected for temperature at the touch of a pressure sensitive switch. Models are available with direct readouts for corn, soybeans or wheat, and adhesive conversion charts are provided for other grains.

- **GRAIN MODEL**
List...\$259
CASH.....\$185
- **FORAGE MODEL**
List...\$310
CASH.....\$215

Simple, four-step operation



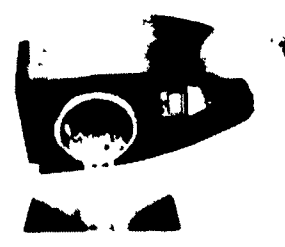
1 Place the tester on a steady, level surface. Then, lift the protective cover up and slide it down out of the way.



2 Use the sample cup to pour grain into the testing cell. Pour slowly and steadily, taking about eight to ten seconds to empty the sample cup. A readout will appear automatically.



3 Wait at least fifteen seconds. Then, press the temperature compensation switch for a direct readout of the moisture content of the grain listed on that switch. Refer to the appropriate chart for other grains.



4 Empty the tester by turning it over. (If you should forget to empty the test cell, the tester will shut itself off automatically after two minutes.)

BINKLEY & HURST BROS., INC.
133 Rothsville Station Rd. (717) 626-4705 Lititz, PA 17543