

# THE OLD FARMER'S ALMANAC

AUG 18-24, 1986

Here's wishing you good fishing.

Now's a good time to transplant most shrubs. US yacht *America* won the "Hundred Guinea Cup" (now the America's Cup) in a race around the Isle of Wight, Aug. 22, 1851. Full moon Aug. 19 (Tues). Hawaii admitted to the union as the 50th state, Aug. 21, 1959. Average length of days for the week, 13 hours, 40 minutes. American sociologist Scott Nearing died at age 100 at Harborside, Maine. *Time brings and time bears all things away.*



**Ask the Old Farmer:** I have a cabin in the woods, no electricity, and a well with a hand pump. I'd like to install a bathroom, but is there any alternative to buying an electric pump and an expensive generator? T.C., Middletown, N.J.  
*Get a water pump operated by a gas engine. It's also practical to install a big (80-gallon) water tank for storage so you won't have to run the pump all the time.*  
**Home Hints:** Applying a coat of wax to a dustpan will help dirt and dust slide off more easily.

## OLD FARMER'S WEATHER FORECAST

**New England:** Beginning of week rainy and cool, midweek warm, rain north, end of week sunny and warm north, seasonable south.  
**Greater New York-New Jersey:** Week begins cloudy, showers midweek, sunny and mild at end of week.  
**Middle Atlantic Coastal:** Beginning of week hot, midweek cloudy and mild, rain south, end of week clear and hot.

(All Rights Reserved Yankee Publishing Incorporated Dublin, NH 03444)

## Leola Produce Auction

Leola, PA

Tuesday, Aug. 12, 1986

Report Supplied by Auction

Broccoli: 5.00-6.50 16 ct.  
 Cabbage: 3.50-5.00 - 50 lbs.  
 Cantalopes: .45-.76 lg.; .25-.45 sm., md.  
 Corn: .80-1.20 doz. white.  
 Cucumbers: 4.00-6.00 1 1/9 bu.  
 Eggplant: 5.00-8.00 1 1/9 bu.  
 Lima Beans: 8.00-14.00 1 1/9 bu.  
 Nectarines: 4.50-8.25 1/2 bu.  
 Peaches: 3.00-7.00 1/2 bu.

Pickles: 5.00-9.00 1/2 bu.  
 Peppers: green 5.00-7.00 1 1/9 bu.; red 10.00-15.00 1 1/9 bu.  
 Potatoes: .60-.90 10#; 5.00-6.90 50#.  
 Red Beets: 4.00-6.50 15 bunch ct.  
 String Beans: green 12.00-20.00 1 1/9 bu.; yellow 10.00-20.00 1 1/9 bu.  
 Tomatoes: 6.00-10.00 25 lb. lg.; 4.50-6.00 sm., md.; cherry-3.00-5.00 12 pt. flat.  
 Watermelon: 2.25-2.50 30# ea.; 1.60-2.00 20-30# ea.; 1.00-1.50 15-20# ea.  
 Zucchini: 2.00-3.50 1/2 bu.

## ATTENTION CATTLE FEEDERS

### GRADED SALE

Friday, August 8  
 11 AM

• 150 Head Local Acclimated Cattle.

**Walter M. Dunlap and Sons**

Lancaster Stockyards Tel. (717) 397-5136

An Old Line Commission Firm Keeping Abreast With The Times

## ATTENTION

### Dairy Buyout Farmers

- \* Get the most for your herd
- \* Go direct - Farm to Packer
- \* Any size herd - all weights and grades of cows
- \* Trucking provided
- \* Paperwork handled quickly and efficiently

# TAYLOR PACKING CO., INC

P.O. Box 188  
 Wyalusing, PA 18853

717-746-1309

## New Holland Sales Stables

New Holland Dairy  
 Wednesday, Aug. 13, 1986

Report supplied by auction  
 Reported receipts of 85 cows, 50 heifers and 3 bulls. Market lower.  
 Load of PA fresh cows, 570.00-910.00.  
 Load of PA fresh cows, 650.00-1000.00.  
 Load of PA fresh cows, 725.00-1020.00.  
 Load of PA fresh cows, 720.00-1025.00.  
 Load of PA fresh cows, 535.00-780.00.  
 Herd of 22 head, all stage cows 325.00-890.00.  
 Locally consigned cows 300.00-710.00.  
 Springing heifers 440.00-750.00.  
 Purebred 760.00-910.00.  
 Bulls 380.00-610.00.

## Penns Valley Livestock

Centre Hall, Pa.  
 Tuesday, Aug. 12

Report supplied by Auction  
 Beef Cows: Utility and Commercial 37.75-44.10; Cutters 35.25-37.50; Canners 31.00-35.00; Shells 28.00.  
 Heifers: Good 51.00-54.35; Commercial 34.00-41.00.  
 Steers: Choice 55.00-57.85; Good 51.50-54.75; Standard 42.00-48.50.  
 Bulls: Good 49.50-50.00.  
 Feeder Cattle: 300-500 lbs. large frame 52.00-61.00; 500-700 lbs. large frame 46.00-53.00; 500-700 lbs. small frame 42.00-48.00.  
 Veal Calves: Choice 55.00-63.00; Good 48.00-44.00; Standard 43.00-46.00; Utility 34.00-42.00.  
 Farm Calves: Bulls 75.00-99.00; Heifers 60.00-67.00.  
 Hogs: Not Enough To Test.

Sows: Not Enough To Test.  
 Boars: Not Enough To Test.  
 Shoats: Not Enough To Test.  
 Lambs: 58.00-72.00.  
 Sheep: 9.00-14.00.  
 Goats per head: 14.00-34.00.

## Shippensburg Wholesale Produce Auction

(Leimbach's)  
 Shippensburg, PA  
 Aug. 7-13

Report Supplied by Auction  
 Price quotes are only #1 and Firm Produce.  
 Apples 2.00-2.80 1/2 bu.  
 Cabbage 1.75-3.50 50 lb. box.  
 Cantalopes sm.-lg. .27-.85 ea.  
 Corn (white) .70-1.50 dozen.  
 Cucumbers 2.00-4.50 1 1/9 bu.  
 Eggplant 1.75-2.60 1/2 bu.  
 Honeydews .70-1.05 ea.  
 Lima Beans 3.50-7.50 1/2 bu.  
 Nectarines 3.10-3.25 1/2 bu.  
 Peaches 2.40-4.50 1/2 bu.  
 Peppers (bell) large 2.75-5.00 1 1/9 bu.; medium 2.75-3.75 1 1/9 bu.  
 Plums 2.50-5.75 1/2 bu.  
 Potatoes 1.90-2.05 20 lbs.  
 String Beans 3.25-7.50 1/2 bu.  
 Tomatoes (lg. size) 3.50-5.00 25 lb. box; (md. size) 2.00-4.10 25 lb. box.  
 Watermelon (all sizes and varieties) .02-.07 lb.

## LOUIS LYONS & SON

Consign your cattle and hogs, feeder pigs & calves to Louis Lyons & Son. They offer choice service, excellent sorting & marketing of your livestock.

Charles Diller, Manager  
 Phone 394-7915

Burnell Siegrist - Buyer & Seller  
 Phone 717-626-8653

Experienced Personnel

Immediate Weighing

## TOP PRICES FOR DOWN, CRIPPLED AND AS IS COWS, BULLS & STEERS

Slaughtered Under Federal Inspection  
 Paid On Dressed Weight

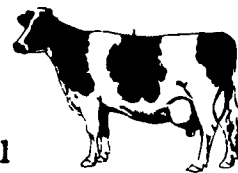
Tom Mulvaney  
 Livestock Trucking  
 (201) 454-4247

### HANDLING:

Warren, Hunterdon, Sussex And Somerset Counties, New Jersey

### IN PENNA:

Northampton, Bucks, Lehigh And Parts Of Carbon & Schuylkill Counties



## ATTENTION FARMERS

EVERY MONDAY  
**HATFIELD PACKING CO.** and  
**MOYER PACKING CO.**  
 Will Receive Your Hogs and Cattle at the  
**DANVILLE LIVESTOCK MARKET**  
 RD 4, Danville, PA

- We will receive your hogs from 8 AM to 12 Noon every Monday. Your hogs will be weighed and paid for immediately.
- We will also accept your sows & boars.
- Your cattle will be received from 12:30 to 5 P.M. We will either pay you for your cattle immediately or you may sell them dressed weight.
- There will not be a commission or yardage fee deducted from your check.
- You may call our office Monday morning and we will be able to tell you the base price for hogs for the day.

MELVIN M. LEHMAN - Owner  
 Danville Buying Station

Phone: 717-275-2880

## York County Livestock Sales Ltd.

P.O. BOX 243 • FAWN GROVE, PA 17321  
 (717) 993-2564

Saturday's Hay Sale Canceled Until Further Notice  
**York County's Only Livestock Auction**

On PA Route #24 between Stewartstown and New Park  
 All Kinds of Livestock Sold on Commission  
 GWALTNEY OF SMITHFIELD  
 Open Every Monday - Hogs - 6:00 a.m. - 12 noon  
 Auction - 7:00 p.m. - 7

Buyers - Livestock Producers - Farmers  
 We Need & Appreciate Your Patronage  
**Stan & Mary Nagle - Owners**  
 Home Phone: (215) 566-3239

## FRIDAY, AUGUST 29 ON THE FARM MONTHLY BRED GILT SALE

Sale to Start Promptly Every 4 Weeks  
 1 More Evening Sale 7:30 P.M.

Located 18 miles south of Lancaster, Pa., 6 miles south of Quarryville, take Rt. 272 to Little Britain, turn north, follow Little Britain Road to Jackson Road, right. 2nd farm, OR take Rt. 222, out of Quarryville to Cedar Hill Road to Little Britain Road to Jackson Road, left. Watch for sale arrows.

**25 Head Due Between Sept. 2 & 9**  
**25 Head Due Between Sept. 10 & 17**  
**6 Head Due Between Sept. 22 & 25**

**50 to 60 Head WHITE DIAMOND GILTS**  
 Here Now a new cross again. Large White & Landrace, first generation true F-1 gilts. Parent stock originated from Lieske Bros. Minnesota. Very productive in litter size and feed conversion.

Vaccinated for Lepto, Erysipias, Rhinitis, E'Coli, Pasteuerella

Hand mated with Breeding Dates

Local Trucker Available  
 No Hogs Sold On Commission

**JOHN B. STOLTZFUS**  
 R.D. 1, Kirkwood, Pa.

Abe Diffenbach, Auctioneer AU225L  
 NEXT SALE DATE SEPTEMBER 26, 1:00 P.M.