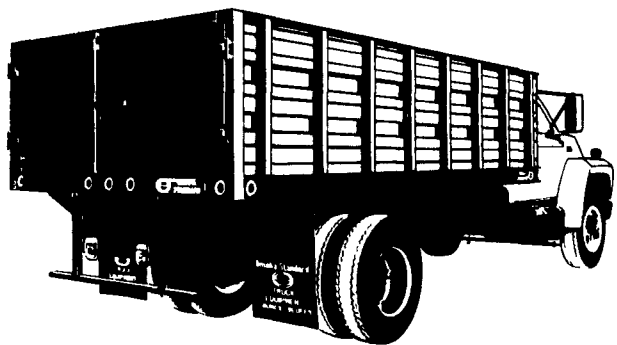


'85 Chevy 1/2 ton, 4x4, 350 auto., PS, PB, dual tanks. 18,000 miles, \$9,600. 717-733-2873

8 Ton Scotts electric hoist for 1 ton truck, brand new, \$900. 301-371-6981

Solid Stake Sides



Omaha Standard's solid steel stake sides are designed for confined cargo or bulk hauling, and are ideal for landscapers, trash haulers and contractors. They fit both our Standard and Metro platforms and come in heights of 28", 40" and 52". These sides are available with the standard solid front or an optional steel bulkhead with full width mesh window.

The solid 2-section, Econo-door rear is "glove" fit to the platform and sides, and offers unobstructed access to the interior. The doors fold back flush with body sides for easy loading and unloading.

Available at:

FARMERSVILLE EQUIPMENT INC.

RD 4, East Farmersville Road
Ephrata, PA 17522
Located in the Village of Farmersville,
Lancaster County
717-354-4271

Omaha Standard



HUNDREDS & HUNDREDS OF TRUCKS IN STOCK SALES AND LEASING

5.9% And 6.9% On Selected Trucks



Grumman Olson, Union City, American Cargo, Hi Cabs & Step Vans



Dump Truck, Stake Bodies, Complete Line Of Chevy Pick-ups including 6.2 Diesels, Cab & Chassis and Med. Duties.

GOOD USED TRUCKS

1985 Chev K-20 H.D. Pickup
1985 Chev. C-10 V6, AT
1984 Chev C-20 Suburban Silverado Loaded
1984 Ford F250 3/4 Ton Cargo Van
1983 Chev. Cargo Van V8, AT

1983 Chev. C-20 HD Pickup
1982 Chev. 6.2 Diesel Pickup
1982 Chev. C30 Big Dually V8, AT
1981 Jeep Scrambler 4x4 Pickup
1980 Chev Beauville Loaded

Over 250 New & Used Trucks In Stock For Immediate Delivery

NOBODY BUT NOBODY UNDERSELLS...

LARRY MURPHY CHEVROLET

(TRUCK CENTER)

1 Mile South of Park City, Old Harrisburg Pike
Lancaster, PA

717-397-0601

717-397-0601

Mark VII - Pickups - Broncos - Bronco II - Stake Body - Crew Cab -

SHEEHY FORD LINCOLN MERCURY INC.

For All Your Farming Transportation Needs Through The F800 Series

BRONCOS DIESEL PICKUPS CHASSIS CAB CARGO VANS 4x4 RANGERS PICKUPS
BRONCO II SUPER CAB CREW CAB STAKE BODY BOX VANS XLT CUSTOM VANS



9-9 Daily
9-5 Sat.
717-272-7671

SHEEHY HOTLINE 717-272-7671

Unless This Emblem Is On Your Car Or Truck You Probably Paid Too Much

SHEEHY LEBANON

Parts Dept. Open
Daily 8-5
Sat. 8-12
717-273-8168

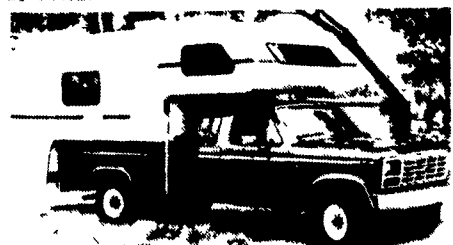
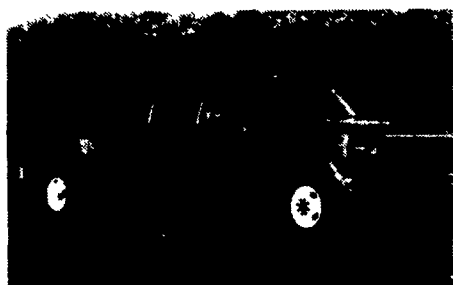
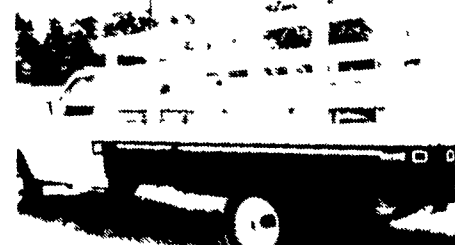
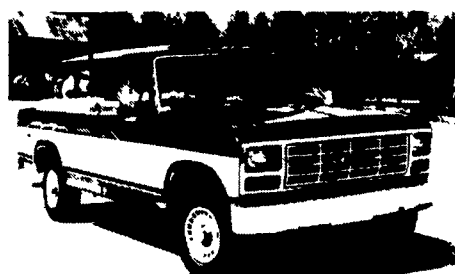
20th & Cumberland St., Lebanon

SHEEHY SELLS ALL TYPES OF FARM TRUCKS



6.9% Financing OR Up To \$600 Rebates On Selected Models

Sheehy Will Match The Ford Motor Company Rebate Extended Until August 30, 1986



Tempo - Cougar - Continental - Town Car - 4x4 - Box Van - Rangers -

Lynx - Topaz - Diesel Pickups - Mustang - T Bird

Custom Vans - XLT - Grand Marquis - Marquis