

Frederick Co. Hay

Buckeystown, Md.
Thursday, Aug. 14, 1986
 Report Supplied by Auction
 26 loads. Market prices steady compared to last week. Demand good.
 Alfalfa, 4 loads fair to good, 97.00-135.00, 6 fair some damaged, some high moisture, 67.00-91.00; Timothy, 4 loads fair to good, 110.00-117.00; Timothy Mixed, 2 fancy, 132.50 and 2 good, 106.00-110.00.
 Mixed Hay, 4 loads fair to good, 87.00-123.00; Fescue, 1 load, 65.00 and Straw, 85.00-87.50.

Belleville Hay

Belleville, PA
Wednesday, Aug. 13
 Report supplied by Auction
 2 loads Alfalfa, 87.50-100.00; 5 loads Mixed Hay, 40.00-82.50; 4 loads Straw, 42.50-82.50; 1 load Oats, 1.05 bu.

Carroll Co. Hay

Westminster, MD
Tuesday, Aug. 12
 Report supplied by Auction
 15 loads.
 Alfalfa, 1st and 2nd cutting, 116.00-136.00, 3rd cutting, 153.00; Timothy Mixed Hay, 77.50-83.00; Timothy Hay, 110.00; Clover Timothy mix, 98.00.
 Brome Grass, 88.00; Other Grass Hay, 79.00; Barley Straw, 93.00; Wheat Straw, 80.00-89.00; Oat Straw 93.00.

King's Hay

Kirkwood, Pa.
Tuesday, August 12, 1986
 Report supplied by auction
 14 loads.
 Alfalfa, 90.00-130.00, a few loads had rain and mold, 57.00-68.00; Mixed Hay, 68.00-132.00; Clover and Clover Mix, 60.00-120.00; Meadow Grass, 94.00.
 4 loads Straw, 68.00-77.00; 3 loads Ear Corn, 74.00-77.00.

New York Multiple Drop Broiler Report

Thursday, Aug. 14, 1986
 Report Supplied by USDA
 Current broiler-fryer negotiated prices for immediate delivery includes mostly multiple drop shipments to New York City from Delmarva.
 Range: U.S. Grade A 63-80. Weighted AVG.; U.S. Grade A 73.10.
 Premium (X) Boxes 9,437 (X) Includes special services, selected competitive brands, etc.

Hackettstown Poultry & Egg

Hackettstown, N.J.
Tuesday, Aug. 12
 Report Supplied by Auction
 Heavy Fowl .30-.55.
 Leghorn Fowl .10.
 Bantams .35-.90.
 Pullets 1.50-2.25.
 Geese .30-1.10.
 Turkey .35-.70.
 Ducks .50-1.10.
 Rabbits .40-1.35.

Pigeons .60-1.80.
 Guineas 1.70-2.20.

Eggs
 White
 Grade A

Jumbo X Lge. .69-.95; Large .63-.76; Medium .58-.59.

Brown
 Jumbo X Lge. .98-1.16; Large .89-1.02; Medium .79-.80.

Belknap Livestock

Dayton, Pa.
Wednesday, August 13
 Report Supplied by PDA
CATTLE 68. No Price Comparisons - Market Not Reported Last Week. One Good slaughter steer 52.00, few Standard 44.25-45.00, few Utility 37.25-40.75. One Standard slaughter heifer 42.00. Few Breaking Utility and Commercial slaughter cows 37.75-40.75, Cutter and Boning Utility 34.50-38.50, Canner and Low Cutter 29.75-34.25, Shells down to 25.00. Few Yield Grade No. 1 1485-1520 lbs. slaughter bulls 44.75-48.25.
FEEDER CATTLE: Few Medium

Frame No. 1 525-865 lbs. feeder steers 47.75-54.50.

CALVES 88. One Good vealer 53.50, few Standard and Good 90-100 lbs. 42.50-45.50, 60-85 lbs. 34.00-43.50, few Utility 50-95 lbs. 20.00-35.00. **FARM CALVES:** Holstein bulls 95-125 lbs. 55.00-85.00, mostly 65.00-80.00, 80-90 lbs. 44.00-60.00, few Holstein heifers 100 lbs. 50.00, Beef Cross bulls and heifers 70-140 lbs. 40.00-55.00.

HOGS 122. US No. 1-2 225-250 lbs. barrows and gilts 63.10-63.25, small lot 64.00, Lot No. 1-3 240 lbs. 63.00, lot 215 lbs. 57.75, No. 2-3 225-265 lbs. 60.00-62.10, few 3-4 240-285 lbs. 57.25-59.00, few 1-3 160-210 lbs. 56.00-57.00. Few 1-3 330-635 lbs. sows 49.25-54.00. Boars 39.00-45.00.

FEEDER PIGS: None.
SHEEP 17. Lot Choice 105 lbs. slaughter lambs 62.25, few Good 65-80 lbs. 49.50-50.00. Lot slaughter ewes 18.00.

GOATS 5. Few Kids 5.00-14.00 per head.

Green Dragon Livestock Sales

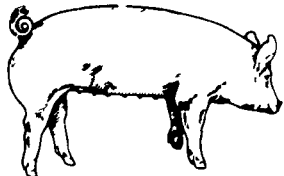
Location: Ephrata RD 4. 1 mile N. on North State St., Ephrata.



COWS COWS COWS SALE EVERY FRIDAY

Lots of good Northern Feeder & Stockers. Slaughter Cows - Bull Steer, Veal-lamb.
 11:00 A.M.-Beef Sale 200-300 each week.
 1:00 P.M.-Dairy Sale.
 7:00 P.M.-Small Animal Sale.
 For Special Sales and Herd Dispersals on farm or at our barn or other market information call: Office 717-733-2444, Home 717-838-4318.

WALTER H. RISSER, Proprietor
 All out of state and new buyers must have cash or certified check or current letter of credit from bank.



EMERY'S BUYING STATION

OPEN TO RECEIVE YOUR MARKET HOGS AT THE GREEN DRAGON MARKET RD 4, EPHRATA, PA 17522 1 MILE NORTH OF EPHRATA ON NORTH STATE STREET.

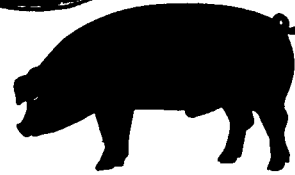
HOURS: MONDAY, TUESDAY, and WEDNESDAY 6:00 A.M. to 11:30 A.M.
 215-458-5677 Residence
 717-733-9648 Office

YOU ARE PAID FOR YOUR HOGS IMMEDIATELY

Ken & Lois Emery, Proprietors



GWALTNEY of SMITHFIELD, LTD.



RECEIVING HOGS: LANCASTER COUNTY FARMERS

MONDAYS: McCoy's Branch Office, Bareville
WEDNESDAYS: (Next to Bawells Butcher Shop)
& FRIDAYS: on Butler Rd. 717-656-9668

TUESDAYS: B & R Cattle
THURSDAYS: Marletta
 717-426-3258

YORK COUNTY FARMERS

MONDAYS: Stewartstown
 717-993-2564

TUESDAYS: Thomasville
 717-792-2248 or 9836

Contact for information:
 Ed Herrmann, 717-284-3203
 or Charlie Kauffman, 215-593-5674
 Future forward contracts available

HAY & STRAW SALE

12:00 Noon
 Every Wednesday
 Westend of Avondale at the intersection of Baltimore Pike and Route 41.

Harvey Z. Martin
 215-268-3604 (Office)
 215-445-5303 (Residence)

KING'S AUCTION

KIRKWOOD
 Hay, Straw and Grain Auction
EVERY TUESDAY 12:00
 Located Rt. 472 5 miles south of Quarryville or 6 miles north of Oxford at Shaub's Auction House

Lloyd H. Kreider,
 Auctioneer
 AU-000513L
 No out of state checks
ALL TRUCKERS AND FARMERS WELCOME

MELHORN SALES, SERVICE, TRUCKING CO.

1010 W. Main St., Mount Joy, PA 17552

The only full service company. in this area, to handle the total needs of the poultrymen.

Which Includes:

- Area distributor of a complete line of Bio-Guard Poultry & Swine sanitation products. Including: sow shampoo, field disinfectants, hatchery disinfectants, egg wash.
- DEKALB chicks & started pullets sold by Nelson Groff & Harold Mishler.
- Complete loading & unloading of pullets & spent hens.
- New modern dollie equipment to move your pullets fast and efficiently with minimum stress to the pullets.

Place Your Confidence In A Full Service Company That Wants To Be Worthy Of Your Business

For More Information Phone:

717-653-1102

Monday - Friday 8:30 AM - 4:00 PM

