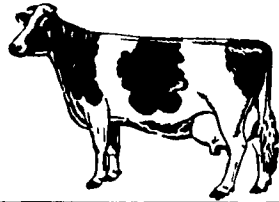


Major Dairy Sales And Dispersals Nationwide



Reports from three sales for the week of August 8 to August 13 showed 234 head averaging \$1,006.47. These sales were held in New York and Minnesota. The top prices at the sales ranged from \$1,750 to \$1,243. Here is a brief look at the results of these sales.

HOLSTEIN

The NEW YORK STATE BRED HEIFER SALE averaged \$776.42 on 166 head. The highest bid of the day was \$1,530 on a Lime Hollow Elevation Mars daughter. This bred heifer is due in September with a Bell calf. Her dam, a Chapel-Bank Apache daughter, has a high record of 16,990 pounds of milk and 736 pounds of fat with a 4.3 test. Her second dam has a high record of 17,520 pounds of milk with a 3.8 test.

Second high bid of the sale was on a Silver Shade Line Chief RORAE daughter. This bred heifer is due in September with a Quality Edge Banner calf. Her dam, a Chapel-Bank Apache daughter, has two records over 20,000 pounds of milk.

Empire Livestock Marketing Cooperative managed the sale.

The TRI-COUNTY CLUB SALE, held in New York, averaged \$1,243

on 33 head. Topping the sale was an 11-month-old daughter of Memorial, with a price of \$3,200. Her dam, classified VG-86, is a high index Valiant daughter. Presently her index is plus 878 milk, plus .19 percent, plus 66 fat, and plus \$161. At 298 days her record in progress is 24,770 pounds of milk with a 4.4 test and 1,084 pounds of fat.

A bred heifer sired by Bell came in second in the bidding with a price of \$2,500. She is due later this month with a Valiant calf. Her dam, a Matt daughter, has a top record of 22,020 pounds of milk and 820 pounds of fat.

The sale was managed by Backus Associates Inc.

The NORTHEAST GRAND-STAND SALE, held in Minnesota, averaged \$1,000 on 35 head. Topping with sale at \$1,750 was a 3-year-old sired by Lester. Her dam, a Royal Medalist daughter, has a high record of 22,000 pounds of milk and 710 pounds of fat.

Second high in the sale, with a bid of \$1,625 was a Very Good Sexation 4 year old. Her record in progress stands at 17,022 pounds of milk with a 4.4 test in 290 days.

The sale was managed by Henry Bartel Auctioneering Service.

York County Holstein Picnic

BY JOYCE BUPP

York County Correspondent
GLENVILLE — Cow-pasture softball, backyard volleyball, cow judging classes and general "visitin'" equaled a good time for everyone, as York Holstein breeders gathered last Thursday for their summe picnic.

Hosts for the day of fun and fellowship were Treva and Elmer Myers, and their son, Dennis.

The Myers' Sun-E-Ridge farm includes 120 acres tillable and a registered Holstein herd of 50 head. Production average on the primarily homebred herd is 16,500 milk and 533 fat. Dennis, who manages the farm since his parents' retirement, favors such current popular sires as Ned Boy, Chairman and Kirk Boy.

Elmer and Treva Myers began dairy farming 52 years ago, on a

farm near Loganville, with about six head of milking animals. His first purchase was a \$38 dry cow, which within a month had freshened with a heifer calf. In 1954, the Myers family moved to their present farm just outside Glenville.

Among the farm's most memorable homebreds is a 17-year-old Black Eagle whose stately, if graying, muzzle still eagerly shoves to the bunk feeder in the loafing shed.

Myers Black Eagle Edna, has dropped 13 calves in her 17 years, finishing her best lactation yet last year, with over 20,000 pounds of milk. And, during the herd's most recent classification, in January, she was raised two points to VG-87.

Cow judging again proved to be a popular Holstein picnic highlight, with most of the 125 in attendance submitting placings for the 2-year-old and aged cow classes.

Scott Green won the youth division, with Patty Bupp, second, and Jeff Hoff, third. In the ladies' division, Barb Taylor had top points, followed by Anna Charles and Darla Doll. Winning the men's division was Leroy Bupp, with Dale Doll, second, and Ira Boyer, third.

Official for the judging competition was Tom Smith, of Atlantic Breeders Cooperative, Lancaster, who also spoke briefly on the linear mating program.

NATIONAL DAIRY COW SALE INDEX

© 1986 Lancaster Farming Newspaper

This sale index can help dairymen place a value in the dairy cows in their own herds. Breed organization sales and private dispersal sales reported in Lancaster Farming are included in the dollar averages.

	Ayrshire	Brown Swiss	Guernsey	Jersey
Year to date:				
Nation	721	946	1135	872
Pennsylvania	1027	—	556	1069
Four previous weeks:				
Nation	—	1694	3055	598
Four previous weeks				
+/-year to date:	—	748 higher	1920 higher	274 lower
	Holstein	Red and White	Milking Shorthorn	
Year to date:				
Nation	2053	2837	672	
Pennsylvania	1334	2837	922	
Four previous weeks:				
Nation	2177	—	—	
Four previous weeks				
+/- year to date:	124 higher	—	—	

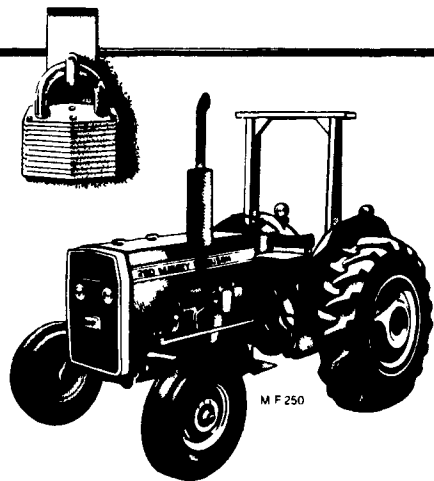
VOTE FOR SAVINGS

- Big factory discounts
- 9.9% APR M-F financing
- Waiver of finance charges

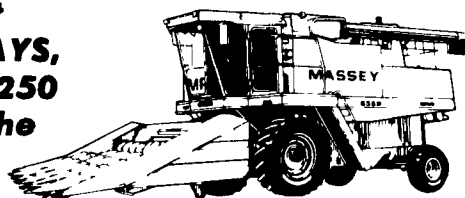
Pick your winning deal.

Pick one of the nine 34 to 78-hp Massey-Ferguson 200 Series Tractors and you've picked the best candidate to handle your tough jobs. Then pick one of our great money-saving offers and you've got a winning deal on that new M-F tractor. You can get low rate M-F financing or waiver of finance charges to January 1 1987. And get huge factory discounts. But you have to hurry. These winning deals end November 1 1986.

Mfr. rated PTO hp



See The Full Line Of MASSEY-FERGUSON Equipment At AG PROGRESS DAYS, Including The MF250 TRACTOR And The New MF8560 COMBINE



N.H. FLICKER & SONS, INC.
Maxatawny, PA
Ph (215) 683 7252

LEBANON VALLEY IMPLEMENT CO.
700 E. Linden St.
Richland, PA
Ph (717) 866-7518

ABRACZINSKA'S FARM EQUIP. INC.
RD 1 Catawissa, PA
Ph (717) 356-2323
(South on Rt. 42)

M.M. WEAVER & SON
N. Groffdale Rd.
Leola, PA 17540
Ph (717) 656-2321

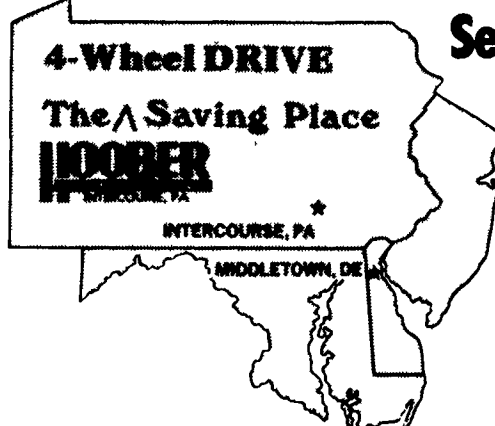
R.W. KELLER SALES
Perkasie, PA 18944
Ph (215) 257 0101

ARMETT'S GARAGE
Rt 9 Box 125
Hagerstown MD
Ph (301) 733 0515

S.G. LEWIS AND SON
West Grove, PA
Ph (215) 869-9440
869-2214

GUS FARM EQUIP. INC.
Rt. 616, P.O. Box 85
Seven Valleys, PA 17360
Ph: (717) 428-1967

MARLIN W. SCHREFFLER
Pitman, PA
Ph (717) 648 1120



See The PUMA On Display

Plus The NEW Steiger LION On Display And In The Field Pulling The NEW Krause LandKing™

WHY SPEND MONEY IN COSTLY TRACTOR REPAIRS WHEN YOU CAN OWN A NEW **STEIGER** PUMA 1000

with **STEIGER'S 5 YEAR NO RISK PROTECTION**

FOR AS LOW AS **\$54,500**

With These Features:

- Cummins 6 Cylinder Engine - 505 CID, Turbocharged, Aftercooled @ 190 HP
- Powershift Transmission - Full 12 Speed Forward; 2 Speed Reverse
- Wet Hydraulic Master Clutch
- Hydraulic Disc Brakes
- Dual, 27 GPM Remote Hydraulic Valves
- 115 Gallon Fuel Tank
- Super Quiet Cab w/50.75 Sq. Ft. of Tinted Glass
- Deluxe, Adjustable, Air-Ride Seat
- AM-FM Radio
- Climate Controlled Air Conditioning and Heating
- 14' Turning Radius to Center Of Drawbar
- 17,000 Lbs. Shipping Weight
- 5 YEAR "STEIGER TRACTOR EXTENDED PROTECTION"



PUMA 1000
190 Horsepower

STEIGER POWER, COMFORT AND DEPENDABILITY AT A LOW PRICE AND WITH 5 YEAR NO RISK S.T.E.P. PROTECTION

...It's Much More Than A Tillage Tractor

* Covers Engine, Transmission, Clutch, Transfer Case, Driveline, Axles.

TWO CONVENIENT LOCATIONS

HOOBER
C.B. HOOBER & SON INC.
INTERCOURSE, PA
(717) 768-8231

ALL NEW AND USED PRODUCTS BACKED BY HOOBER PARTS AND SERVICE

HOOBER
HOOBER EQUIPMENT INC.
MIDDLETOWN, DE
(302) 378-9555