



ALL DAY & NIGHT SALE

WEDNESDAY, AUGUST 20, 1986

Located: Just West of Lancaster, Pa. At 1531 Manheim Pike, Along Rt. 72 at Rt. 72 & 283 Exits.

SELLING WED., AUG. 20 AT 9:00 A.M.

TRACTORS: HARVESTERS; 1 & 2 row corn pickers; corn planters; corn shellers; flail-rotary & cycle mowers; alfalfa & grain drills; fertilizer spreaders; loaders; bin & forage wagons; N.H. rake; elevators; Plows, int. reset plow, cultmulcher, Disc Harrows, Cultipackers, manure spreader; post drivers; new & used tractor tires; scraper blades; HUFF PAY LOADER, CAB, D. GM engine, boom, bucket & sno-plow; dump truck & others.

SALE BY C.E. KEENER

SELLING WED., AUG. 20 1986 AT 6:00 P.M.

ABSOLUTE AUCTION

225 Lincoln welder; 36-O Blast All sand blaster; two heavy duty air compressors; Steam Jenny; acetylene torch & cart; heavy duty press; wheel pulleys; crow bars; jacks; electric drills; bits; wrenches; shelving; 20 parts bins; 12 new PTO shafts; four tanks w/pumps; several work benches (2 w/vices); two electric grinders (1 portable); two portable shop heaters; three battery chargers; two floor jacks; long ram jack; 500 gal. gas tank w/elec. pump; 12 fluorescent hanging lights; 4 fire extinguishers; office equipment; three desks; 2 chairs, Apple photo copy 2 E Printer; calculator; time clock; metal cabinet; 7-file cabinets; plus items not listed.

LUNCH AVAILABLE

NO OUT OF STATE CHECKS unless known by Auctioneers or Owners.

SALE BY

KEENER EQUIP. INC.

AUCTIONEERS

C.H. WOLGEMUTH & SONS Lic. #1036

R.D. #2, Manheim, Ph. 717-665-5664

B. Rentzel - Lic. #761

Emigsville, Pa. Ph. 717-764-6412

CONSIGNMENT SALE

SATURDAY, AUGUST 30, 1986

AT 10:00 A.M.

LOCATION: Williams Grove Historical Steam Engine Association. 10 miles South of Harrisburg off Rt. 15 or 74. From I-81 North take Exit 15. From I-81 South take Exit 18. Turnpike Exit 17. Mechanicsburg, Pa. Watch for signs.

ANTIQUES TRACTORS & MACHINERY

Hand crank John Deere H w/cult. & plow; 1940 L; Allis Chalmers 1938 WC; Farmall F-12; Allis Chalmers WD; Fordson track road grader; Case model L; 1948 SC Case; Huber AU 18-36 w/book; Huber L; Massey Harris pony w/plow & cult.; 2 Huber thrashers; Ellis Keystone stationary wooden thrasher; Dearborne combine; NH 7' sickle bar mower; MH 2-bottom FH plow; 2 standard twin steel wheel garden tractors; walk behind garden tractor; Syracuse 12" walking plow; tractor & machinery parts; plow shears; owners manuals & lots more.

STEAM ENGINE, GAS ENGINE & ANTIQUE AUTOS

Built model traction engine, nice; IH 1 1/2 HP gas engine; 1932 Ford model B dump truck; 1937 Buick 4-door special, nice; 1941 2-door Chevy; 1951 Chevy 1/2 ton pick-up; 1953 Cadillac; 1964 Chevy 1/2 ton panel truck.

NOTE: Several more items are expected before sale day. Some items may be sold prior to sale. Nothing excepted on sale day.

TERMS: Cash or certified check only. No out of state checks. Not responsible for accidents, fire, theft or damage. All items must be removed within 10 days.

AUCTIONEERS:

Little Ike Eichelberger #1954L

Melvin Haines #379L

Ralph Brenneman #708L

For information call Sundays:

Ronnie Brandt (717) 766-4001

Dairy and Livestock Sales

PUBLIC SALE

OF FURNITURE MANUFACTURE EQUIP.-SUPPLIES AND UNFINISHED FURNITURE

MYERSTOWN, PA.

TUESDAY, AUGUST 26, 1986

At 5:30 P.M.

Sale to be held at Weaver's Star Motors, 1 mile east of Myerstown, (along Rt. 422), Lebanon Co., PA.

TOOLS & EQUIPMENT

Double Belt Sander (table mounted with disc & belt); 2 Craftsman Band Saws (table mounted); Craftsman Router (table mounted); 10" Craftsman Table Saw; Craftsman Drill Press; Centry Heavy Duty Drill Press (16 speed); 15 H.P. Time Saver Speed Belt Sander & Polisher; 5 H.P. Double Drum Sander; 3 H.P. Sander (2850-3450 RPM); 10" Craftsman Radial Arm Saw (2 1/2 H.P.); 2 H.P. Magna Force Compressor (120 psi - 22 gal. tank); 5 H.P. Champion Air Compressor (upright tank); 6" Craftsman Jointer; Pallet Carrier (steering); Pull Cart (steel wheels); 2-10 Gal. Paint Pressure Pots; 3- Binks 200 Spray Nozzles; Packing Blankets; Exhaust Fans; 24" Belt Conveyor (conveys 1 floor level).

MATERIALS

Rolls Upholstery Fabric; Chest of Drawers; 55 gal. Drums Rosewood Stain; 55 gal. Drums Lacquer Sealer; 55 gal. Drum Gloss Varnish & C05 Varnish; Large Assortment Unfinished Bunk Beds, Chairs, Tables and Table Tops; SCREWS; STAPLES & HOLE PLUGS; Foam Material and other items to be sold!

Terms By

RICHARD WEAVER

717-866-4312

T. Glenn Horst, Auct.

859-1331-AU00438L

Timothy G. Horst, Auct.

738-1245-AU001767L

MON. thru FRI. SEPT. 22 to 26 - PA All American Dairy Show, Farm Show Complex, Harrisburg, PA. The Six Breed Show of All Americans. Charles A. Itle, Manager.

FRI. EVE. SEPT 26 - At Kling's Sale Barn, RD1, Landisburg, PA "3rd Annual Fall Invitational." Kling's Auction Service, Sale Mgrs.

FRI. SEPT 26 - Annual Dairy Show & Sale. Show 11AM, Sale 1:30PM. Penns Valley Livestock Auction, Centre Hall, PA. Scott Yocum.

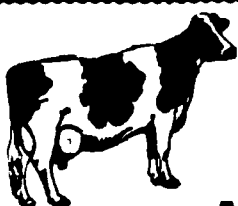
FRI. SEPT. 26 - 5:30PM Gap Auction. Antiques & HH sold at every auction. Located off Rt. 41, Lancaster Turkey Hill Minit Mkt., cross RR bridge. Ira Stoltzfus & Son, Aucts.

FRI. SEPT. 26 - 7PM New Saddle & Tack. Red Carpet Horse Sale, Cambria Co. Fairgrounds, Rt. 219N., Ebensburg, PA. K. Hines, C. Rowe.

SAT. SEPT. 27 - 9AM Antiques & Collectibles. Estate of Harrold H. Heintzelman, 490 Orange St., Northumberland, PA. Dockey, Dockey & Deppen, Aucts.

SAT. SEPT. 27 - 11AM 45 Open & Bred Hi Grade Heifers, Farm Mach. Springville, PA. Susq. Co., on Rt. 29. R. Hewitt Sutton, Owner. M.L. Bunnell Auct. & Sale Mgr.

SAT. SEPT. 27 - 12 Noon Catalog Registered Horse. Red Carpet Horse Sale, Cambria Co. Fairgrounds, Rt. 219N., Ebensburg, PA. K. Hines, C. Rowe.



WILMER & MARK KRAYBILL MILKING HERD, BRED HEIFER & CALF DISPERSAL

AUGUST 21, 1986

10:30 A.M.

Elverson, PA

Location: 30 miles east of Lancaster along Rt. 23 between Morgantown and Elverson. From PA Turnpike Exit 22, Morgantown, take Rt. 10 South 1/4 mile, go east on Rt. 23 2 miles to farm on the right. Watch for sale signs.

90 REGISTERED HOLSTEINS 90

55 Milking Age

15 Bred Heifers

20 calves under 1 yr.

14 Due July-Aug.

20 Due Sept.-Oct.

FEATURING:

10 GENERATIONS VG OR EX BY JEMINI

Fountain Farm Jem Marquis VG-87 EX MS

3-5 365 21,460 3.6 771

2-1 365 20,572 3.5 725

Due September to Ned Boy

EX GMD NET PROFIT AND HER

4 DAUS. SELL

Caernarvon Profit Jane EX EX MS GMD

7-3 365 23,571 3.6 852

8-5 365 22,863 3.6 814

lifetime over 150,000

Fresh June Her Ned Boy Heifer calf sells

Her dam is also a GMD and over 29,000

HER 3 VG DAUGHTERS

Penn-Lite Tradition Jody VG

by Tradition Fresh April

2-5 324 16,829 3.6 611

Index +539 +7 .07 +344

Penn-Lite Persuader Jubilee VG-86

2-10 335 22,110 4.1 905

3-11 365 22,957 3.7 848

Fresh July

Penn-Lite Fuse Janet VG

7-4 365 23,136 3.5 814

Ivanhoe Star Granddaughter

Fresh May

THREE OUTSTANDING YOUNG VALIANTS

Dimon-Acres Valiant Smith VG-87 2 yrs.

Proj. 2-4 17,091 551

Due Dec. to Ned Boy

Dam GP-84 Marvex Next Dam EX 23,000

Penn-Lite Valiant Delight

2 yr. old Fresh May

Dam: 7-4 365 25,144 3.5 885

Manormead Valiant Pansy

Fresh July

Dam GP-84 Bootmaker over 19,000

CLASSIFICATION: 1 EX 15 VG 14 GP 5 from EX Dams - 32 from VG Dams RHA 17,785 3.4 613

Sires Include: Bell, 7; Chairman, 7; Pete, 3; Valiant, 3; Ned Boy, Rotate, Enchantment, Lot, Tradition, Mars Tony

Service Sires: Mandingo, Lot, Ned Boy, Chairman, Melvin

Semen Selling: 9 units Fisher-Place Mandingo 8 units Lekker Valiant Royalty

Sale in Tent Interstate Tested DHIA Records Preg. Exam. Cert. & Acc.

Owners:

Wilmer G. & Mark B. Kraybill

Elverson R. 3 Box 21, PA

215-286-9576 (Barn) 215-286-6130

(Home)

Ringmen: John Umble, Omar Stoltzfus

For Catalogs contact Sale Manager

Sale Manager-Pedigrees:

Dale L. Hoover

R 4 Box 805, Lebanon, PA 17042

717-867-2489

Auctioneer: Leon Kurtz AU-000522-L

Cochranville, PA 215-593-5387



COMPLETE DAIRY HERD DISPERSAL

FRIDAY EVENING, AUGUST 29, 1986

7:00 p.m.

Located in Path Valley, Franklin County, on Route 75, 1 mile north of Willow Hill Exit on PA Turnpike, 3 miles south of Spring Run, PA.

★ 50 REGISTERED HOLSTEINS ★

35 MATURE COWS ★ 5 BRED HEIFERS

BALANCE YEARLINGS AND CALVES

Majority of Animals are calfhood vaccinated.

DHIA Herd Average- 17,994m, 3.60 percent, 659 fat.

Atlantic Sired and Bred Herd.

Records to over 20,000m, 800f.

7 recently fresh- 8 due for Sept. and Oct.

"This is a very nice young herd with good individuals and several good cow families."

9 Animals sell sired by Kingway Elevation Very; 4 by Superior; 2 by Marvex; 2 by Stewart; 2 by Ivanhoe Star. Other sires include Glendell, Basic, Mil-Nor, Oak Star, Apollo Rocket, Penstar, and Harrisburg Gay Ideal.

Service Sires include: Joyland Forcaster, Mil-Nor, Stewart, Sir C Valor, Bachelor, Ranger and More.

Features include:

An Ivanhoe Star daughter due in September with 18,000m and 650 fat. Sells with 3 daughters; a fancy Very making a 15,000 lb. 2 year old record; a Milu Granddaughter with over 22,000m and a Marlu Basic yearling.

2 Maternal sisters from a Harrisburg Gay Ideal dam; one sired by Very, making a 14,000 2 year old record and a 4 year old sired by Superblend- due in September to Crescentmead Chief Stewart- made over 19,000 this lactation.

A nice Glendell Arlinda Chief bred 12-24-85; making 17,000 this lactation.

A fancy Mor-Clem Bootmaker Clem, 5 year old, due in September to Marlu Basic- finishing a 17,500 record this year with over 600 fat. Her dam is a 4.9 tester.

Tie-stall cattle- Well cared for and in top condition- DHIA Records

All Registered- Vaccinated for Shipping Fever- 30 Day test

Don't miss this sale if you need good registered cattle that know how to work!

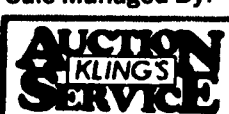
MARVIN N. ADAMS, Owner

13671 Path Valley Road

Willow Hill, PA

(717) 349-2834

Sale Managed By:



R.D. 1, Landisburg, PA 17040

Tel. (717) 789-3883

License No. AU-000500-L