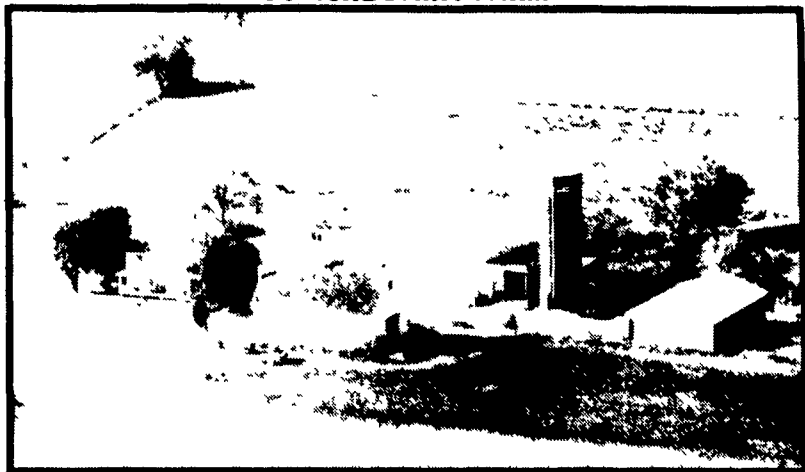


**PUBLIC AUCTION**

**REAL ESTATE  
WEDNESDAY, SEPTEMBER 17, 1986**

1:30 P.M.

**70 ACRE DAIRY FARM**



Located in Salsbury Twp., Lancaster Co., Pa. along 340. 20 miles east of Lancaster City. 4 miles east of Intercourse. 1 mile west of White Horse.

8 rooms 2 1/2 story house, full basement, kitchen, dining and living room, den, pantry on first floor 4 bedrooms and full bath on second floor

Bank barn, 2 silos, 20x70 Harvester (Goliath unloader) 10x50 concrete 40x60 implement shed 4 acre capacity tobacco shed. Large corn crib and 4 grain bins built in barn, 3 car garage. Good spring stream runs through farm.

Building in good repair Nice place

10% down day of sale, final settlement on or before April 1, 1987.

For appointment to see property call 717-768-8372

Auctioneer-

Steve  
Steve Jr **PETERSHEIM**  
AU-001349L

Owners:

**HERSHEY & MARGUERITE KURTZ**

**OUTSTANDING  
PUBLIC AUCTION**

**FINE ANTIQUES- GLASSWARE- VERY NICE GUNS- TOYS**

Having sold residence the undersigned will sell at public auction his life-long collection of antiques and guns, located 1 mile South of Littlestown, PA - along Route 97 (formerly 140), turn left onto Bollinger Road, go 7/10 mile, turn right onto Mathias Road and to first farm on right hand side - on

**SATURDAY, AUGUST 23- 9:00 A.M.**

A fine lot antiques consisting of: Chippendale 3 over 5 walnut inlaid high chest of drawers w/old brass and bracket ft.; Chippendale 4 drawer chest of drawers; walnut broken arch, 30 hr. grandfathers clock, 2 weight, keywind, dec. face, calendar dial, signed Louis Miller - March 15, 1900; unusual Chippendale graduated 4 drawer solid end chest; maple bird cage tilt top stand; Rupp 4 drawer chest of drawers w/stiple finish; fine old wicker baby buggy, original; Chippendale graduated 4 drawer bracket ft. chest of drawers w/original brass; walnut and curley maple Hepplewhite slant front desk w/nice interior; Sheraton 4 drawer solid end chest of drawers; old farm table w/1 drawer; set 6 boot-jack plank bottom chairs; set 6 curley maple rush seat chairs; mahogany bow front and side 5-shelf china w/claw ft. and carved front & top w/mirror back; 2 pc. softwood corner cupboard, 2 dovetailed drawers and glass door top; walnut broken arch 2 pc. corner cupboard w/dovetailed drawer; oak marble top chest of drawers; oak roll top desk; painted softwood drysink w/dovetailed drawer; curley maple 3 drawer chest of drawers; wicker chairs; carved mahogany four shelf glass door bookcase; oak 5 shelf glass door china w/2 drawers & bevel glass top; Hepplewhite tapered leg inlaid 6-leg drop leaf table; softwood dovetailed blanket chest w/original stiple finish; round oak pedestal table; softwood stand w/dovetailed drawer; flat top & camel back trunks; walnut bow front china cabinet; oak chest of drawers & dressers; plank bottom chrs.; oak arm rocker; pr. Adams chairs; slat back rockers; old churn w/stand; old ladder-back rocker; very old walnut 3 drawer pedestal stand; very old Olympic wood childs wagon; spinning wheel chair; Victorian settee.

Curley maple pewter top coffee mill; unusual brass 2-bulb lamp; brass clothes tree; lot old pictures & picture frames; lot copper & brass items; 4 brass buckets - some signed; old pewter top coffee mill; small cast Enterprise coffee mill; lg. copper apple butter kettle; rare unusual Harrisburg Machine & Foundry brass display steam power unit in case; old childs wooden riding horse; old childs tricycle; old childs metal riding horse pedal toy; repro. drysink; oak table boards; oak dresser mirrors; silver-plate & sterling items; lot old post cards; lot misc. castware, woodware & tinware items; flat irons; glassware includes; lot Strawberry w/gold leaf pressed & patterned glass, very nice lot other pressed & patterned glass, flow blue pieces, art glass pitcher & glass sets; very nice lot copperlustre pitchers, cups, bowls - lot decorated; carnival, old hobnail, cranberry glass, old tea pots, old shakers, cut glass; Oneida Tudor plate service f-12 w/extra pieces table china; Faust pretzel; lg. oriental vases; lot other very nice glassware items.

Two fine coverlets- 1- J. Lutz, E. Hempfield Township for Sussan Shookers- 1855; 1 signed Mary A. Hofacker; quilts; 2 old bisque dolls- 1 marked Special 9/0- other 1894 AM3-DEP; lot collectors and antique toys, tin and cast.

Ten drawer office file unit; mantle pieces; Hardwick apartment size gas range; GE Harvest Gold 2 door refrigerator-freezer; Enterprise stuffer; other items.

Fine lot guns include: Parker 12 gauge Trojan; Pre 64- Winchester Model 70- 300 H&H magnum w/variable 3-9X scope & 4 boxes ammo. (new cond.); 2 Winchester Model 12-12 gauges; LC Smith 12 & 16 ga. doubles - one Specialty Grade; 2 Ithaca 12 ga. doubles; Fox Sterlingworth 12 ga. doubles; J. Hollis & Sons. A. Richards and other 12 ga. doubles; Browning Light 12-12 ga. Semi w/rib; Stevens & Remington 12 ga. singles; Winchester 22 cal. rifle; others.

Auctioneer's Note: A fine sale from start to finish- Many items rare and hard to find. Plan to attend. Sale under tent- bring own chairs.

Sale Day Inspection Only- Beginning at 7:00 A.M.- Furniture: 1:00 P.M. Guns: following furniture.

Terms: Cash- Refreshment Rights Reserved

Owner-

**GLENN Y. KINDIG**

Littlestown, PA- PH: 717-359-4691

Auctioneers: C. David Redding- PA License No. 742-L

Gettysburg, PA- PH: 717-334-6941 or 334-6598

Edgar A. Bohrer- PA License No. 1233-L

Bunker Hill, West Virginia- PH: 304-229-8354

will sell 4 stands at  
Lancaster Central Far-  
mers Market. 717-291-  
4740 or 291-4739  
Bernard G. Grimm, Jr.,  
Auct.

THURS. AUG. 28 - 10AM  
Consignment Sale of  
Tractors, Combines, FARM

implements, Trucks.  
Everetts Corner, 3 mis.  
W. of Kenton, DE, on Rts.  
300 & 44. C.T. Scuse &  
Sons, Aucts

THURS. AUG. 28 - 11AM  
58 Holsteins & Farm  
Machinery. For G. & F

Larney, Rt. 609 (Ram-  
seyburg Rd.), 3 1/2 mis. W.  
of Hope, N.J. 2 mi. E. of Rt.  
46! 2 1/2 mis. E. of PA line,  
16 mis. E. of Easton, PA,  
and 10 mis. S. of Delaware  
Water Gap! Col. Fred R.  
Daniel Aucts., Inc.

THURS. AUG. 28 - 12  
Noon. 50 Reg. Holstein  
milk cows and some heifer  
calves. Located Upper  
Dauphin Co., at Halifax,  
PA. Go N. on Rt. 225 to  
Fisherville, turn right  
toward Enders, about 3  
mis. to farm. Roy & tim  
Wilbert, Owners. Mark  
Glick, Auct. Art Kling,  
Pedigrees.

THURS. AUG. 28 - 2PM 69  
Acre Dairy Farm, Farm  
Eq. Albright Rd.,  
Heidelberg Twp., Lebanon  
Co., PA. Take Rt. 419 N.  
from Rt. 897 in Scheaf-  
ferstown approx. 2 mi. to  
Albright Rd. 1st farm on  
left. Isaac S. & Verna H  
Brubaker. Sanford G.  
Leaman Auct. Serv.

THURS. AUG. 28 - 7PM  
Farm Machinery. By  
Order of: FmHA. Col. Fred  
R. Daniel Aucts., Inc.

THURS. AUG. 28 -  
7:30PM Berks Co.  
Holstein Sale, 55 head of  
Registered Holsteins.  
Held at Reading  
Fairgrounds, PA.  
Managed by Backus  
Associates.

FRI. AUG. 29 - 7PM Willow  
Hill, Franklin Co., PA.  
Dairy Herd Dispersal of 50  
Top Registered Holsteins,  
Marvin N. Adams, owner,  
Willow Hill, PA. Kling's  
Auction Service, Sale  
Mgrs.

FRI. AUG. 29 - 7:00  
Lebanon Co. Holstein Club  
Heifer Sale. Lebanon Area  
Fairgrounds. Harry H.  
Bachman, Auct.

SAT. AUG. 30 - 8:30AM  
Real Estate, Antiques,  
Carnival Glass,  
Glassware, Car, HH. For  
the Walter C. & Mabel E.  
Smith Estate of 50 W.  
High St., Windsor, PA,  
York Co. Bob & Tom  
Sechrist, Aucts.

SAT. AUG. 30 - 8:30AM  
Libraries and Collections  
of H. Glenn Baker, Julia E.  
Byrd, Mrs. Harry Groff,  
Dr. Raymond R. Stayer  
and Leon K. Walters.  
Farmersville Fire Hall, E.  
Farmersville Rd., Far-  
mersville, Lanc. Co., PA.  
Terms by: T. Glenn Horst  
& Son, Inc. (Agent for  
Owners) T. Glenn &  
Timothy G. Horst, Aucts.

**CONSIGNMENT  
SALE**

of  
**TRACTORS - COMBINES -  
FARM IMPLEMENTS - TRUCKS**  
**THURSDAY, AUGUST 28, 1986**

10 A.M. RAIN or SHINE

LOCATION: Everetts Corner. 3 Miles  
West of Kenton, De. on Rts. 300 & 44.

We will be accepting equipment on  
August 25, 26, 27 from 8 A.M. till 5  
P.M.

For information call

C.T. Scuse & Sons, Auctioneers, Inc.  
302-653-7530

or

Marvel Everett  
302-653-7532



**PUBLIC  
AUCTION**

Valuable 85 acre farm (2 parcels). An-  
tiques, Collectors Items, Household  
Goods, etc. At the former Frank Bartlow  
farm, 1 mile SE of Unityville.

**MONDAY, LABOR DAY,  
SEPTEMBER 1, 1986**

Starting at 10:00 A.M.

Real Estate 1:00 P.M. Parcel 1: 14 acre far-  
m-ette with black top road frontage, 7 room, 3  
bedroom home, 2 full baths with attached 2 car  
garage. Oil hot air heat etc. Also large bank  
barn remodeled for horses. Farm pond ideal  
for the hobby farmer. Lovely setting and  
location. Parcel 2: approx. 71 acres with ap-  
prox. 50 tillable, balance woodland. Black top  
road frontage adjoining parcel 1. Parcel 3:  
Consists of parcel 1 & 2. To view these fine  
properties call 458-6043 or 546-6907. Real Estate  
sells subject to owners confirmation.

Owners:

**THOMAS & GRACE HUNTER**

Conducted by Fraley Auction Co.  
AU001194L, 546-6907

Listing Later

**THOMPSON  
ESTATE COMPLETE  
DISPERSAL**

Located 1 mile off Rt. 15 Covington, Pa. Watch for arrows at  
blinker light in Covington.

**SATURDAY—AUG. 23 at 10:30 sharp**

Selling order, shop & small items at 10:30; large machinery will be  
sold at 1:00 sharp regardless if done on small items or not.

**MACHINERY**

Case 930 Comfort King diesel tractor; IHC 240 tractor 2 pt. hitch; M Far-  
mall for parts; Oliver 70; 8N Ford; Model 3WL Oliver crawler w/bucket &  
quick attach backhoe; Dodge 200 truck 4 speed 4/wheel drive w/stake body  
& Myers snow plow; Viking 60 Chev. truck w/hoist & 14' flat bed; JD  
self prop. combine; heavy duty Miller transport 12' disk; BN215 Badger  
liquid tank spreader; Ford 5 bottom semi-mount plows; Brillion 16'  
transport disk; large transport dry fertilizer spreader; JD 2 row corn  
planter; Decker D60 flail chopper; JD 13 disk grain drill; 40' hay elev.;  
Ontario 16 disk grain drill; 2 bottom trailer plow; 9 shank chisel plow; JD  
70 barrel spreader; Papec transport weed sprayer w/200 gal. plastic tank  
& pump; 2 Haines gravity boxes; IHC hopper blower; 2 old spreaders for  
trailers; 3 pt. blade; 2 grain augers; Esco milk tank (no compressor);  
small lowboy trailer; pole trailer; M 53 jet rotary mower; 3 pt. fertilizer  
spreader; Wisconsin air cooled motor; air compressor; 2 pt. two 3 pt. tool  
bars; hammer mill; cinder block; approx. 250 bu. baskets; approx. 250  
potato crates; approx. 75 apple bins; lots of windows; plank & lumber; lots  
of old doors; old house shutters; corn sheller; wheel barrow; platform  
scales; 2 bag carts; cords; milk cans; tires; pallets; barn jogger; piano; a  
shop full of tools such as jig saw; sander; anvil; vices; saws; motors; pipe  
cutters & threader; etc. grinder; bolts & lots & lots of small items not  
listed.

Terms Cash or good check.

Estate of  
**MERVIN (JIGGS) THOMPSON**  
OWNER-  
**NANCY THOMPSON**  
717-659-5135

Auctioneer- Arlow Kiehl  
Sales Manager- Gordon Wood  
Mansfield, Pa.—Ph. 717-549-4901

For the most in advertising coverage and  
preparing your sale. Call Woods Auction Service

Lunch Available