

# York County Named Crop Disaster Area

(Continued from Page A20)

Lyng promised to have CCC commodities moved from storage facilities in the Midwest, where crops are plentiful, to areas of the Southeast where storage is available.

Lyng has also authorized a nationwide, across-the-board 10-percent increase of 1986 advance deficiency payments, in generic certificates, at the cost of an estimated \$1 billion.

Counties designated disaster areas are, in addition, eligible immediately for the following programs:

- Under the Emergency Feed Assistance Program, eligible farmers may purchase feedgrains owned by the Commodity Credit Corporation at 75 percent of the basic county loan rate. This program does not include hay.

- Under the FHA emergency loan assistance program, family farmers who cannot obtain credit elsewhere are eligible for low-interest loans. Interest rate is 5

percent for loans up to \$100,000; and 8 percent for loans over \$100,000 and up to \$500,000. Loan amounts are limited to the government's estimate of a farmer's losses.

Those programs are in addition to others announced earlier which include:

- Haying and grazing of all crops on acreage set aside under the Acreage Conservation Reserve requirements of the commodity programs, including cotton.

- Acres designated to be put to a conservation use under Acreage Conservation Reserve requirements may be planted for winter pasture with fast-growing grasses or small grains for grazing.

- Producers participating in federal farm programs will still be eligible to receive deficiency payments on planted acreage, even though the crop is used for forage, or not harvested at all. Participating producers who harvest their crops for forage will

be permitted to retain their acreage bases.

- Designated counties are eligible for cost-sharing of reseeding, applying necessary minerals and controlling competitive shrubs.

- The Forestry Incentive Program cost-sharing assistance is available to re-establish stands of planted pine trees lost due to drought conditions.

As necessary, USDA anticipates shifting additional clerical personnel to areas where the needs are greatest. A toll-free hotline is in operation by USDA, to answer farmers' questions and facilitate drought relief efforts. That toll-free number is 1-800-433-0703.



Grain producer David Trout faces considerably less than half a normal corn crop with depressed prices for what crops he does harvest.

## Maryland Begins Listing Commodities, Producers In Need Of Feed Supplies

BY JOYCE BUPP

York County Correspondent

While York County was just gaining disaster status this week, agricultural extension agents in neighboring Maryland were working to pull together lists of commodities available and producers in need of feed supplies.

All but two Maryland counties have been designated disaster areas, eligible for federal emergency programs. Only Allegheny and Garrett counties are not included in Maryland's official disaster area; however, Allegheny County, because it is contiguous to disaster status counties, will still be eligible for those federal programs.

In Carroll County, one of Maryland's hardest hit counties, Extension personnel are trying to bring available commodities and producers in need of supplies together.

"We're trying to assemble information on any commodities for sale, but primarily corn and hay," says assistant county agent Walter Bay. "We'd like to get supplies for farmers needing hay at a reasonable cost."

And while local supplies would entail less transportation cost, the commodity supplier list already includes names from both Pennsylvania and upper New York, primarily commercial commodity dealers equipped to handle volume.

In addition, Carroll County's ASCS and FHA offices are helping to compile lists of farmers who might need emergency supplies of donated hay. A meeting is scheduled Aug. 19 with feed suppliers, farm lenders and related agencies and services, to clarify emergency help available to farmers. And a producer meeting, set for Sept. 23, after silage har-

vest, is scheduled to help farmers balance feedstuffs on hand and plan for winter feed and financial needs.

Carroll County farmers seeking information on feedstuffs and suppliers are asked to contact the county's extension office at 301-848-4611.

Across Maryland, the state's Department of Agriculture is serving in a similar "clearinghouse" capacity for those who both need, or have to sell, appropriate feedstuffs. During regular business office hours, calls should be made to 301-841-5770. Evenings and weekends, a toll-free number is available at 1-800-638-2209, where a recorded message may be left, with Maryland Department of Agriculture officials making follow-up contacts to those leaving messages.



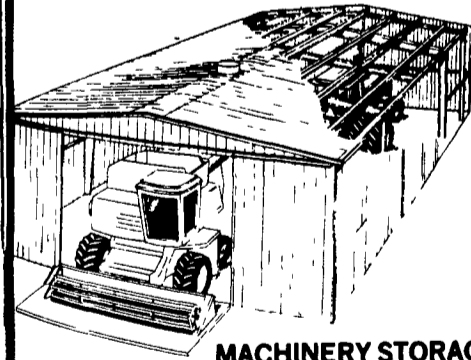
Late planted soybeans, drilled into powder-dry soils in southern York County, have responded to scattered showers with efforts at growth. But unless substantial rain falls immediately, farmers may harvest only planting costs for their efforts.

### SYSTEM OFFER\*



- Grain Bins
- Fans
- Dryers
- Feed Bins
- Grain Legs
- Heaters
- Scales

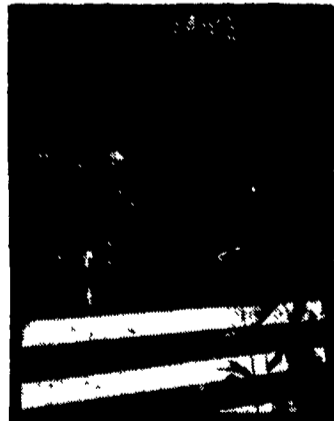
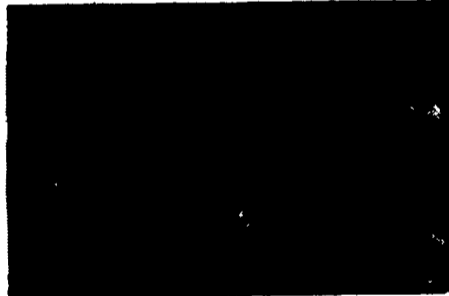
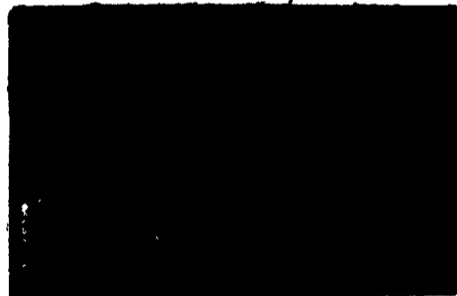
### ERATION SYSTEM OFFER\*



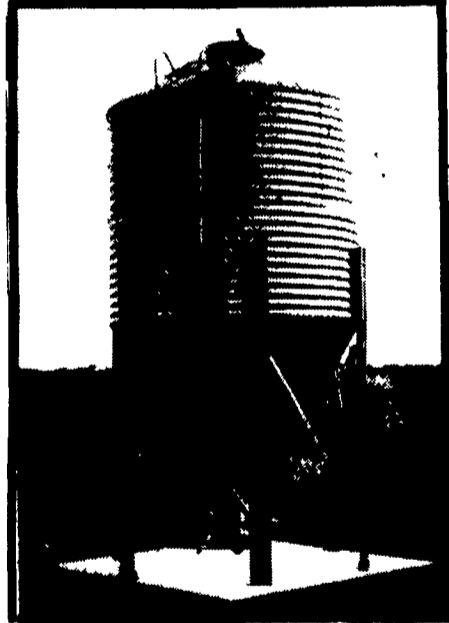
MACHINERY STORAGE LATER

### Builder For Details

FRIDAY, AUGUST 29th



Butler® Scales



### FEED BINS AND GRAIN BINS IN STOCK

### BUTLER GRAIN BINS, GRAIN LEGS, DRYERS, FANS, HEATERS, SCALES

### SPECIAL PRICES IN AUGUST

TRI-STATE MARINE DIST. INC.  
P O Box 121  
Deale MD 20751  
PH 301-867-1447

H.R. WEAVER CONSTRUCTION  
RD 3, Box 403  
Anncville, PA 17003  
PH 717-838-3753

W.R. MOODY, CONTRACTOR  
113 Walnut Lane  
West Newton, PA 15089  
PH 412-872-6804

CLIFFORD E BOLLINGER ASSOCIATES  
RD 4 Box 197  
Denver PA 17517  
PH 215-267-6046

O.A. NEWTON & SON CO., INC.  
P O Box 397  
Bridgeville, DE 19933  
PH 302-337-8211

FOUR COUNTIES CONTRACTOR, INC.  
R D, Box 816  
Coalport, PA 16627  
PH 814-672-5751

PHIC BUILDERS  
435 King Street  
Pottstown, PA 19464  
PH 215-323-4070

BINTRIM BUILDERS  
204 Hoover Road  
New Castle, PA 16101  
PH 412-924-2698

### BIN STOCKING AGRI-BUILDERS

BUTLER MFG. CO.

Attn P E Hess

P O Box 337 Oxford PA 19363

I'm interested in more information on Butler products

- Buildings
- Grain Bins
- Feed Bins
- Grain Legs
- Dryers
- Scales

Name \_\_\_\_\_

Address \_\_\_\_\_

County \_\_\_\_\_ Zip \_\_\_\_\_

City \_\_\_\_\_ State \_\_\_\_\_

Phone \_\_\_\_\_

(Include area code)

LF