

**Chambersburg Hay**

Chambersburg, PA  
Thursday, July 31  
Report supplied by Auction  
7 loads.  
Alfalfa, 100.00-116.00; Blue  
Grass, 119.00; 3 Loads Mixed Hay,  
72.00-85.00; Alfalfa Mixed, 120.00.

**New Holland Hay**

New Holland, PA  
Monday, July 28  
Report supplied by Auction  
164 loads.  
Alfalfa, 90.00-174.00; Timothy,  
76.00-146.00; Mixed Hay, 75.00-  
148.00; Straw, 44.00-75.00; Corn,  
70.00-78.00; Oats, 1.25-1.85 bu., Rye,  
2.30-2.60 bu.

**Carroll Co. Hay**

Westminster, MD  
Tuesday, July 29  
Report supplied by Auction  
8 loads.  
Alfalfa & Grass, 115.00; Alfalfa,  
112.00; Timothy, 84.00; Mixed Hay,  
85.00-87.50; Oat Straw, 69.00;  
Wheat Straw, .75 bale.

**Omaha Weekly**

Thursday, July 31  
Report supplied by USDA  
Slaughter Steers and Heifer  
prices lower for the week erasing  
advances posted on Monday.  
Prices for both steers and heifers  
.50 to mostly 1.00 lower than last  
week according to USDA livestock  
market news.

Trading early was marked by  
good higher demand with a  
dressed market that was little  
changed from the previous weeks  
levels. However, by mid-week  
dressed beef prices turned lower  
and packers applied pressure to  
bring live prices more in line with  
carcass realization.

Slaughter cows steady to 1.00  
lower. Slaughter bulls steady.

Estimated 5 day receipts of  
cattle this week 4,200 compared to  
actuals last week of 4,323 and 6,944  
last year. Slaughter Steers ac-  
counted for 48% of receipts,  
slaughter heifers 40%, slaughter  
cows 9% and feeder cattle 1%.

SLAUGHTER STEERS: Closing  
sales Choice 2-3, few 4's, 1050-1250  
lbs. 58.50-59.25, upper limits of

grade not tested. Mixed good and  
choice 2-3 1050-1250 lbs. 57.00-58.50.  
Few good 53.00-57.00.

SLAUGHTER HEIFERS:  
Closing sales choice 2-3, few 4's  
950-1100 lbs. 57.50-58.50, upper  
limits of grade not tested. Mixed  
good and choice 2-3 925-1050 lbs.  
54.50-57.50. Few good 51.00-54.50.

Average of LS214 detailed price  
quotations for choice 900-1100 lbs.  
steers this week 58.83, 1100-1300  
lbs. 60.25. Average cost of all  
slaughter heifers this week 57.38  
average weight 1018 lbs. compared  
to 56.65 and 998 lbs. last week.

**East Coast Carlot**

Thursday, July 31, 1986  
Report supplied by USDA  
Compared to Wednesday's  
close: Trading moderate. Special  
fed veal generally steady in ltd.  
comparison. Good & Choice boning  
veal steady to 1.00 lower; in-  
shipped steady; spring lamb 5.00  
lower compared to last week.  
Boneless beef unestablished with

weak undertone.

Veal Carcass- Hide On

Choice & Prime

(Special Fed)

Hide On 50 Head

220-280 lbs. ltd. 145.00 generally  
steady.

Good and Choice

Boning Type-Hide On

Northeastern Suppliers

500 Head

Steady 1.00 lower.

65-75 lbs. 73.00-75.00.

55-65 lbs. 71.00-73.00.

45-54 lbs. 69.00-71.00.

35-44 lbs. 67.00-69.00.

34 lbs. dn. 65.00-67.00.

Inshipped

750 Head

Steady.

71-80 lbs. 74.00.

61-70 lbs. 72.00.

51-60 lbs. 70.00.

41-50 lbs. 68.00.

30-40 lbs. 66.00.

Spring Lamb Carcass

Choice & Prime

18 loads

55 lb. down 145.00, 5.00 lower.

55-65 lb. 145.00, 5.00 lower.

65-75 lb. 145.00, 5.00 lower.

Compared to last week: special  
fed veal steady, good & choice  
boning veal 3.00 higher. Inshipped  
steady - 4.00 higher, spring lambs  
5.00 lower. Boneless beef  
unestablished with weak un-  
dertone.

**Joliet Weekly**

Thursday, July 31

Report supplied by USDA

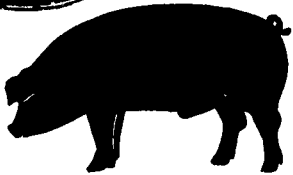
Slaughter Steers and Heifers  
1.00; instances 1.50 higher on  
Monday but not tested the balance  
of week. Receipts 533 this week;  
717 a week ago; and 934 a year ago.

SLAUGHTER STEERS: Choice  
2-4, mostly 3 1025-1250 lb. 57.50-  
60.00.

SLAUGHTER HEIFERS:  
choice 2-4 925-1050 lbs. 57.00-58.50.  
Some mixed good and choice 2-3  
840 lb. Wednesday 54.00.



**GWALTNEY of  
SMITHFIELD, LTD.**



**RECEIVING HOGS:**

**LANCASTER COUNTY FARMERS**

MONDAYS: McCoy's Branch Office, Bareville  
WEDNESDAYS: (Next to Bawells Butcher Shop)  
& FRIDAYS: on Butler Rd. 717-656-9668

TUESDAYS: B & R Cattle

THURSDAYS: Marietta

717-426-3258

**YORK COUNTY FARMERS**

MONDAYS: Stewartstown

717-993-2564

TUESDAYS: Thomasville

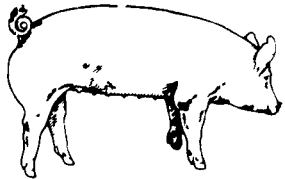
717-792-2248 or 9836

Contact for information:

Ed Herrmann, 717-284-3203

or Charlie Kauffman, 215-593-5674

Future forward contracts available



**EMERY'S  
BUYING  
STATION**

**OPEN TO RECEIVE  
YOUR MARKET HOGS**

**AT THE GREEN DRAGON MARKET**

**RD 4, EPHRATA, PA 17522**

**1 MILE NORTH OF EPHRATA**

**ON NORTH STATE STREET.**

**HOURS: MONDAY, TUESDAY, and  
WEDNESDAY 6:00 A.M. to 11:30 A.M.**

215-458-5677 Residence

717-733-9648 Office

**YOU ARE PAID FOR YOUR  
HOGS IMMEDIATELY**

Ken & Lois Emery, Proprietors

**Green Dragon  
Livestock Sales**



Location: Ephrata RD 4. 1  
mile N. on North State St.,  
Ephrata.

**COWS COWS COWS  
SALE EVERY FRIDAY**

Lots of good Northern Feeder  
& Stockers. Slaughter Cows  
- Bull Steer, Veal-lamb.

11:00 A.M.-Beef Sale 200-300 each week.

1:00 P.M.-Dairy Sale.

7:00 P.M.-Small Animal Sale.

For Special Sales and Herd Dispersals  
on farm or at our barn or other market  
information call: Office 717-733-2444,  
Home 717-838-4318.

**WALTER H. RISSER, Proprietor**

All out of state and new buyers must have  
cash or certified check or current letter of  
credit from bank.

**KING'S AUCTION  
KIRKWOOD**

Hay, Straw and  
Grain Auction  
**EVERY TUESDAY**

12:00

Located Rt. 472 5 miles south  
of Quarryville or 6 miles north of  
Oxford at Schaub's Auction  
House

Lloyd H. Kreider,  
Auctioneer  
AU-000513L

No out of state checks  
**ALL TRUCKERS AND  
FARMERS WELCOME**

**HAY & STRAW  
SALE**

12:00 Noon

Every Wednesday  
Westend of Avondale  
at the intersection of  
Baltimore Pike and  
Route 41.

Harvey Z. Martin

215-268-3604

(Office)

215-445-5303

(Residence)

**MELHORN SALES, SERVICE, TRUCKING CO.**

1010 W. Main St., Mount Joy, PA 17552

The only full service company, in this area, to handle the total needs of the poultrymen.

Which Includes:

- Area distributor of a complete line of Bio-Guard Poultry & Swine sanitation products. including: sow shampoo, field disinfectants, hatchery disinfectants, egg wash.
- DEKALB chicks & started pullets sold by Clay Mumma, Nelson Groff & Harold Mishler.
- Complete loading & unloading of pullets & spent hens.
- New modern dollie equipment to move your pullets fast and efficiently with minimum stress to the pullets.

*Place Your Confidence In A Full Service Company That  
Wants To Be Worthy Of Your Business*

For More Information Phone:

717-653-1102

Monday - Friday 8:30 AM - 4:00 PM

