

# Moser Receives Largest Equity Check

BARTO — Eastern Milk Producers recently presented its largest-ever equity check to retiring dairy farmer Harold Moser of Barto.

The \$5,666 check represented all of the money Moser contributed to Eastern's equity while he was a member of the 4,000-member dairy cooperative.

"Eastern's policy of redeeming regular equity upon a member leaving dairy farming is one of the most liberal programs available because Eastern refunds the entire equity in one lump sum," said Dan Fox, an Eastern director from Ephrata, Pa., who presented the

check to Moser.

Also on hand for the presentation was Tony DiFava, an Eastern quality control inspector who has been servicing the Moser farm since 1972.

"In all the years this man has shipped to Eastern, he never had a high bacteria count or a high somatic cell count," DiFava said. "That in itself is an accomplishment."

Moser's son, Harold Jr., took over the operation of the farm, which, DiFava noted, is one of four Moser family farms in the immediate area that ship a total of 28,500 pounds of milk to Eastern every other day.



Retiring dairy farmer Harold Moser, center, of Barto, Pa., receives a \$5,666 equity check from Dan Fox on behalf of Eastern Milk Producers Cooperative. Looking on is Tony DiFava, an Eastern quality control inspector.

## Inter-State Slates Annual Picnics

SOUTHAMPTON — Inter-State Milk Producers' Cooperative District 14 has scheduled its annual picnic at Knoebels Grove, Elysburg, for Thursday, August 7.

Cooperative Districts 16, 18, 21, 24, 25 and 26 have also scheduled their annual picnic at Cowan's Gap State Park, Allen's Valley for Thursday, August 7.

Robert M. Dever, Inter-State's assistant general manager, will be the guest speaker.

Picnic registration will begin at 11 a.m. in pavilion "U." Milk and ice cream will be provided.

Inter-State District 14 covers

Guest speaker will be Paul E. Hand, Inter-State's general manager.

Registration will begin at 10 a.m. Milk and ice cream will be provided.

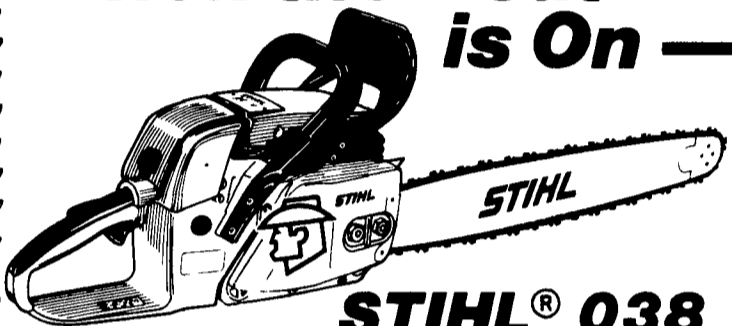
The picnic covers membership in Adams, Cumberland, Franklin, Fulton, Juniata and Perry counties; Carroll, Frederick, Harford and Washington counties, Md.; and Berkeley, Clarke, Frederick, Jefferson and Morgan counties, W. Va.

Clinton, Columbia, Luzerne, Lycoming, Montour, Sullivan and Union counties and parts of Centre, Northumberland and Snyder counties.

Inter-State Milk Producers'



**When the Heat is On —**



**STIHL® 038 FarmBoss® Keeps its Cool**

The 038AVE Farm Boss™ is a versatile mid-size saw with unique heat resistant features. So you can keep on cutting when the temperature climbs.

**A & B SALES & SERVICE GAP POWER EQUIPMENT**  
2 Miles South of Rt. 23 Along 772 Thru Monterey - RD 1 Ronks, PA  
Corner of Rt. 30 & Rt. 897 Gap, PA  
Phone 717-442-8970

**HOLLINGER'S LAWN & GARDEN EQUIP.**  
1755 W Main St., (Loc on Rt. 322) Ephrata, PA 717-738-1131

**MARTIN HARDWARE & EQUIPMENT CO.**  
Rt. 501 1 1/2 Miles South of Schaefferstown, PA  
Phone 717-949-6817

**SHARTLESVILLE FARM SERVICE**  
RD #1 Box 1392 Hamburg, PA  
Phone 215-488-1025

**STIHL® THE WORLD'S LARGEST SELLING CHAIN SAW**

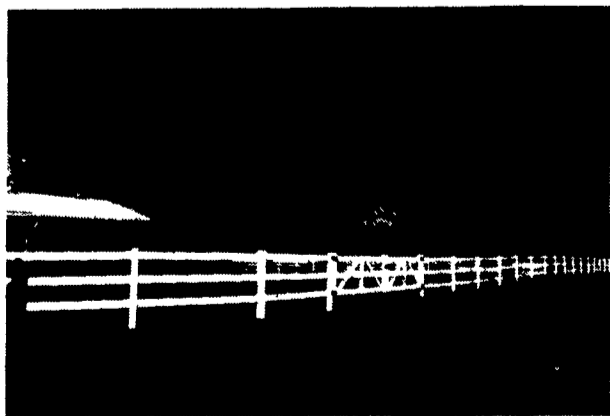
## POLYVINYL P.V.C. PRODUCTS

100's Of Uses

### P.V.C. RAW MATERIAL

- 2x4
- 2x6
- 2x8 T&G
- 4x4
- 5x5
- 7/8"x1 1/2"
- 7/8"x3"
- U-Channel
- Pipe • Accessories, Etc.

## P.V.C. WHITE RAIL FENCE



3-Rail Fence w/Gates "Never Need Paint"  
P.S. Polyvinyl will not rot, splinter, chip, etc.

Apply To

## QUALITY FENCING & SUPPLY

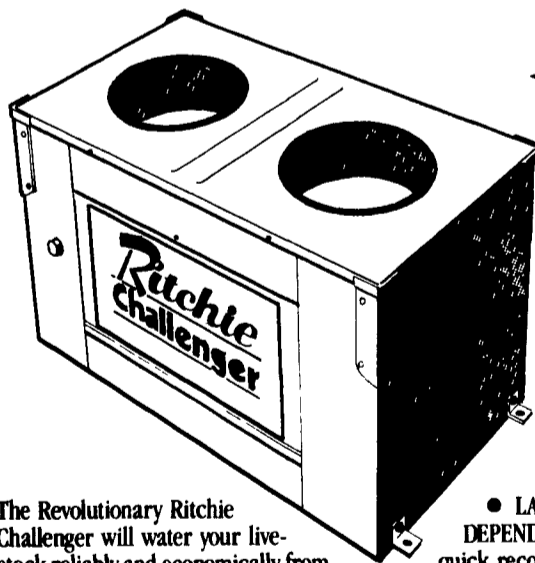
WHOLESALE AND RETAIL

R.D. 1, Box 428

New Holland, PA 17557

(717) 354-9760

# COME IN AND SEE THE REVOLUTIONARY RITCHIE® CHALLENGER™



The Revolutionary Ritchie Challenger will water your livestock reliably and economically from now 'til the end of this century and beyond!

The Ritchie Challenger is your best long term investment in livestock watering!

- DEEP WATER WELLS provide protected and controlled access to clean fresh water supply all year.
- FLOATING THERMAL CAP insulates water for coolness in summer and heat conservation in winter Easy for livestock to depress and drink . easy to remove for service. Keeps water cleaner and prevents algae formation

- LARGE, PROVEN DEPENDABLE VALVE provides quick recovery of 15 gal. per minute!

- STAINLESS STEEL trough, casing, cover, bolts & screws (including painted parts).

- ONLY 196 WATTS, including supply line cable. Electrical operating costs of \$4.10 to \$11.84 per year, according to university tests.

- UP TO 2 1/4" of foam insulation



## RYDER SUPPLY CO.

P.O. Box 219  
539 Falling Springs Rd.  
Chambersburg, PA 17201  
Phone: 717-263-9111