

Farm Calendar



(Continued from Page A10)

Holstein Show, Carlisle Fairgrounds, 9:30 a.m.
 Bullsken Township Community Fair, Mt. Pleasant; continues through Aug. 16.
 Dayton Fair, Dayton; continues through Aug. 16.
 Kutztown Fair, Kutztown; continues through Aug. 16.
 Montour-DeLong Community Fair, Washingtonville; continues through Aug. 16.
 McKean County Fair, Smethport; continues through Aug. 15.
 Sewickley Township Community

Fair, West Newton; continues through Aug. 16.

Tuesday, August 12
 Bradford County 4-H Dairy Roundup, Troy Fairgrounds.
 Cochranon Community Fair; continues through Aug. 16.
 Harrold Fair, Greensburg; continues through Aug. 16.
 Lawrence County Farm Show, New Castle; continues through Aug. 16.
 Venango County Fair, Frederick; continues through Aug. 16.

Wednesday, August 13
 Northeast District Jersey Show.
 Pa. Nurserymen's Association advertising seminar, Reading Holiday Inn.

Thursday, August 14
 Schuylkill 4-H Dairy Show, Schuylkill County Fairgrounds.
 Middletown Grange Fair, Wrightstown; continues through Aug. 16.
 Pesticide Handling and Safety Meeting, York County office meeting room, Pleasant Acres, York, 7:30 to 9:30 p.m.

Friday, August 15
 Schuylkill County Fair Open Dairy Show.
 NE District FFA Show, Troy.
 Bucks County 4-H and open Holstein cattle shows, 11 a.m.
 Montgomery County Dairy Show

and 4-H Fair.
 Northeast District FFA Show, Troy.

Saturday, August 16

Saturday, August 16
 Central Pa. Championship Holstein Show, Huntingdon Fairgrounds, 6 p.m.
 Northeast District 4-H Dairy Show, Troy.
 Lancaster County Beekeeper's Meeting, Robert Fulton Farm,

Route 222 south of Quarryville, 12:30 p.m.
 South Central Pork Producers Meeting, Memorial Park, Shippensburg, 6:30 p.m.
 Somerset County Fair, Meyersdale; continues through Aug. 24.
 Bucks County 4-H Fitting and Showmanship Contest, Middletown Grange, Fairgrounds, Wrightstown, 11 a.m.
 Grand Squares Dance, East Petersburg Firehall; 8 p.m.

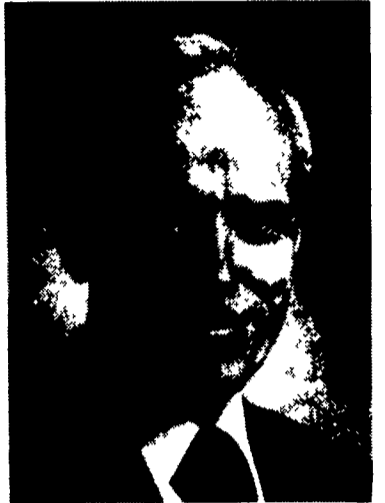
Penn State Assistant Ag Dean Retires

UNIVERSITY PARK — Dr. Robert F. Hutton, Penn State's assistant dean in agriculture and assistant director of the Pennsylvania Agricultural Experiment Station, retired July 14 with emeritus status. He has been with the University for 32 years.

The Agricultural Experiment Station, the research arm of the College of Agriculture, oversees all research in the college, and also funds research projects in the Colleges of Science and Human Development.

Dr. Hutton, who was named to his current position in 1967 partly because of his expertise with computer systems, applied computer management control procedures to budgeting and reporting systems in agricultural research administration.

Between 1979 and 1982, Dr. Hutton served as interim associate dean for research in the College of Agriculture. Before moving to the Experiment Station, he was a professor in the Department of



Dr. Robert F. Hutton

Agricultural Economics and Rural Sociology.

A graduate of the University of Kentucky, Dr. Hutton received the master of arts and doctor of philosophy degrees from Harvard University in economics.

USDA Buyout Report

WASHINGTON, D.C. — An estimated 26,200 head of dairy cattle were slaughtered in federally inspected plants during the week ending July 5, as a result of the Dairy Termination Program, the U.S. Department of Agriculture announced Wednesday.

This total includes all cows, heifers and calves identified as dairy animals designated for disposition in compliance with the program requirements.

The cumulative total of cattle slaughtered under the program from April 1 through July 12 is an estimated 567,900 head.

The purchases of meat in addition to normal purchases are to

help offset the effects of the DTP on the domestic meat market. These purchases, which totaled 20.4 million pounds during the week ending July 26, consisted of 20.2 million pounds frozen beef carcasses and 120,000 pounds of frozen boneless roasts. The cumulative purchases total 219.5 million pounds.

Dairy cattle reported for export under the program for the period April 1 to July 26 totaled an estimated 20,408 head. Live cattle exported under the program are expected to increase as countries develop tenders participate in the export enhancement program. Live cattle exports are in addition to meat purchase requirements.

The Saving Place

HOOBER EQUIPMENT INC.
 INTERCOURSE, PA
 (717) 768-8231

HOOBER EQUIPMENT INC.
 MIDDLETOWN, DE
 (302) 378-9555

WE SHIP PARTS DAILY
 Via UPS - PPSH - BUS - AIR FREIGHT, ETC.



CALL US...
It Could Be We Have It

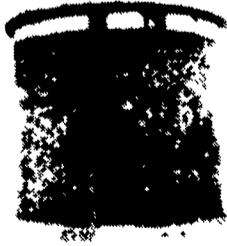
Case
 Authorized
 UPS Station

EMHERR.. EVERYDAY LOW PRICES

EARLY ORDER SALE SPEEDY CORNCRIBS

- Easy To Erect
- Rods Instead Of Bolts On Wire Mesh

Place Your Order NOW And SAVE



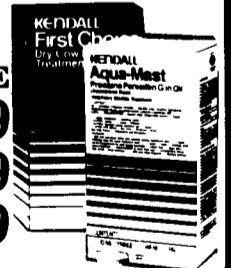
KENDALL MILK REPLACER



Medicated
 For growth promotion and increased feed efficiency
ACTIVE DRUG INGREDIENT
 Chlorotetracycline 100 grams/ton
GUARANTEED ANALYSIS
 Crude Protein, Minimum 24.0%
 Crude Fat, Minimum 10.0%
 Crude Fiber, Maximum 1.0%
 Vitamin A, Minimum 30,000 I U/lb
 Vitamin D₃, Minimum 10,000 I U/lb
 Vitamin E, Minimum 20 I U/lb
 50 Lb

ONLY \$17.99

KENDALL MASTITIS TREATMENT



SALE
 First Choice \$6.99
 Aqua-Mast \$7.49
 DC-600..... \$7.39

FLY CATCHER



Traps Over 4000 Flies. Seven Ft. Long And Almost One Ft. Wide. Hangs Horizontally In Barns And Stables

\$2.49 Each

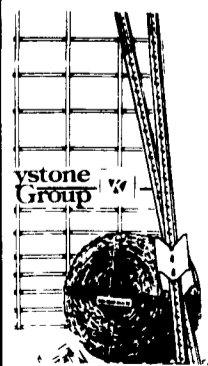


BALING TWINE

325 lb.

\$15.99 50 + Up

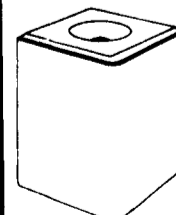
\$16.59 10-49 \$16.99 1-9



FENCING SUPPLIES

We Will Match Anybody's Price Bring Your Deal In And See What We Can Do!

SALT BLOCKS



50 lb. White Block \$3.99
 50 lb. Trace Mineral \$5.29
 50 lb. Sulphur Block \$4.39
 4 lb. Bricks White Trace Mineral 99¢ Ea.

EMHERR

R.D. #1, Rte. 272 South, Herrville Rd.
 Willow Street, PA

PRICES EFFECTIVE THRU AUG. 9th
 FARM & HOME SUPPLY

WE UPS ANYWHERE

HOURS: Mon.-Thurs. 7:30-6:00
 Fri. 7:30-9:00; Sat. 7:30-5:00

PH: (717) 464-3321 or
 TOLL FREE: (Area Codes 717 & 215)
 1-800-732-0053