

Bender Named Premier Breeder and Exhibitor

BY MARGIE FUSCO

Cambria Co. Correspondent

MEYERSDALE — The first evening Holstein Show in Somerset County drew more than 175 entries and a large crowd. They watched as Ezra and Mary Yoder's cow, Ray-Anthony Chantilli Rose, took grand champion honors in the senior division as well as the senior

champion rosette, and blue ribbon for best cow age six years and over.

The 7-year-old cow was sired by Straight-Pine Elevation Pete out of Cass-Ridge Mark Esther. She was bred by Ray E. Anthony.

Junior division grand champion as well as reserve grand champion of the senior division was Mar-

teeny Tony Corry, owned by Karen Marteeny. The 2-year-old cow is a Marshfield Elevation Tony daughter with Berkline Betty Chief Cola as her dam. She was bred by William and Connie Marteeny.

Reserve grand champion in the junior division went to Paul Carr's Carrdale Pete Little Jo. The 5-year-old was sired by Straight-Pine Elevation Pete with Carrdale Triple Threat Joy as her dam. The cow was bred by Gerald and Patricia Carr.

Paul Carr was also named Premier Breeder and Exhibitor in the junior division. Senior division honors for Premier Breeder and Exhibitor went to Oren Bender.

The show, sponsored by the Somerset County Holstein Club, was judged by Jake Emig of Shippensburg. A professional hoof trimmer and cattle showman, Emig helped to develop eight all-Americans when he worked with the show herd at Allen Dairy Farm.

Trophies and plaques were presented in 33 categories, all backed by local sponsors. Missy Walker, Somerset County Dairy Princess, was on hand to present the awards and ribbons.

Results of the show are as follows:

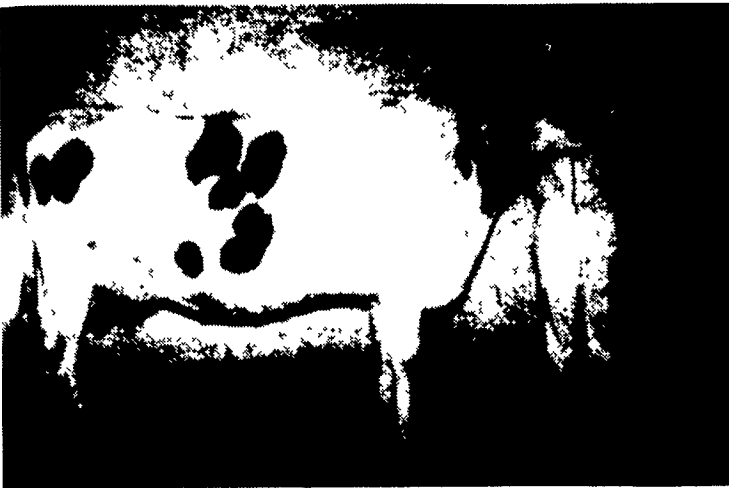
**SOMERSET COUNTY
HOLSTEIN SHOW**
Junior Bull Calf
Harry Mosholder
Senior Yearling Bull
Kirk Hillegass
Senior Champion Bull
Reserve Sr. Champion Bull
Harry Mosholder
Junior Champion Bull
Ryan Weiner
Reserve Junior Champion Bull
Jeffrey Kimmel
Junior Heifer Calf
Craig Glessner
Intermediate Heifer Calf
Paul and Sharon Fox
Senior Heifer Calf
Paul and Sharon Fox
Summer Yearling Heifer
Paul and Sharon Fox
Junior Yearling Heifer
Paul Carr



Junior division grand champion and reserve grand champion of the senior division was exhibited by Karen Marteeny.

Intermediate Yearling Heifer
Hillmont Farms
Senior Yearling Heifer
Paul and Sharon Fox
Junior Champion Senior
Paul and Sharon Fox
Reserve Junior Champion Senior
Hillmont Farms
Junior Champion Junior
Craig Glessner
Reserve Junior Champion Junior
Paul Carr
Junior Best 3 Females
Paul & Sharon Fox
Dry Cow 4 and Under
Sheila Bender
Dry Cow 5 and Over
Oren Bender
Junior 2 Year Old
Jas. Sechler and Brad Winter
Senior 2 Year Old
Karen Marteeny
3-Year-Old
Oren Bender
4-Year-Old
Lewis and Barbara Berkley

5-Year-Old
Oren Bender
100,000 Pound Production Class
Oren Bender
Aged Cow
Ezra and Mary Yoder
Senior Champion Senior
Ezra and Mary Yoder
Reserve Senior Champion Senior
Karen Marteeny
Senior Champion Junior
Karen Marteeny
Reserve Senior Champion Junior
Paul Carr
Senior Best 3 Females
Cove Run Farms
Produce of Dam
Corrdale Ezra and Mary Yoder
Dam and Daughter
Mike Walker
Best Animal Bred and Owned
Paul and Mike Carr
Premier Breeder and Exhibitor Senior
Oren Bender
Premier Breeder and Exhibitor Junior
Paul Carr



Grand champion of the show, senior division, is owned by Ezra and Mary Yoder.



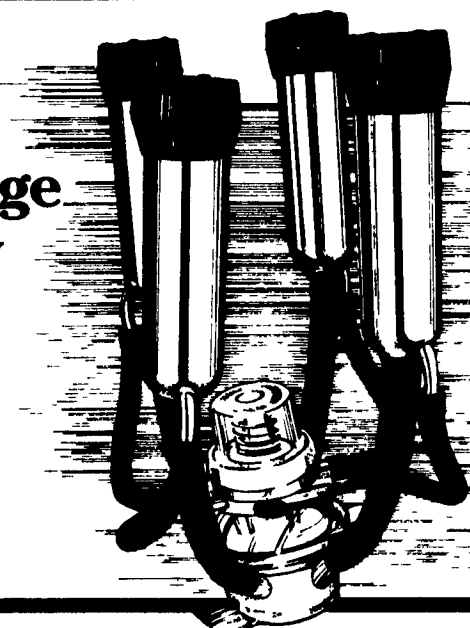
Premier breeder and exhibitor in the senior division of the Somerset Holstein Show was the Owen Bender family. They are pictured here with the Somerset County Dairy Princess, Missy Walker.

Milk Order Decision Amended

WASHINGTON, D.C. — The U.S. Department of Agriculture has issued an interim final decision amending the location adjustment provisions in the Greater Kansas City, Southwest Plains, Central Arkansas and Texas milk marketing orders. The proposed amendments would modify the plant location adjustment provisions under the four orders to conform with higher Class I price differentials mandated by the Food Security Act of 1985.

The revised location adjustments reflect a north-to-south price surface that increases generally at a rate of three cents per hundredweight for each 10 miles from a plant. Currently, the orders provide for adjustments of 1.5 cents per 10 miles. The changes will provide additional price incentives to ship milk from production areas to city markets. USDA will conduct a poll of the affected cooperative associations to determine their approval of the amendments. In order to become effective, at least two-thirds of the producers in each market must approve the proposed amended orders.

This
could change
your day
for the
better.



The NuPulse Milker

Would you like to have up to 11% faster milking, high quality, longer life rubberware; better udder health, less unit fall-off, eliminate faulty and corroded electrical pulsator connections and clean milk-outs?

Then it's time for a change

Let us prove it to you! Try NuPulse milkers FREE and you be the judge. For more information, contact your local dealer or call NuPulse, Inc.

Time for a change

Nu Pulse, Inc.
908 Stewart Street
Madison, WI 53713 USA 608/274-2722

DIST. SALES MGR.
CURT CASSADY
519 Golden Street, Lititz, PA 17543
717/626-1065

**LUCAS BARN
EQUIPMENT**
RD 2, Box 339D
Bellefonte, PA 16823
814/383-2806

**PENN YORK
REFRIGERATION**
RD 1, Box 390
Knoxville, PA 16928
814/326-4496

**CRIDER DAIRY
EQUIPMENT**
8933 Rowe Run Road
Shippensburg, PA 17257
717/532-2196

**FISHER &
THOMPSON**
127 Newport Road
Leola, PA 17540
717/656-3307

HENRY JAQUITH
RD 1, Box 325
Spring Creek, PA 16436
814/664-2397

**STINER'S
REFRIGERATION**
25 Crooks Terrace
Canton, PA 17724
717/673-8351

**NORTHAMPTON
FARM BUREAU**
300 Bushkill Street
Tatamy, PA 18085
215/258-2871

**SCHMIDT'S
EQUIPMENT**
RD 2, Box 122
Hawley, PA 18428
717/253-3048

AQUILLA YODER
Box 83
Belleville, PA 17004
717/935-2481

VISIT WITH US AT AG PROGRESS DAYS

NuPulse® Inc. Welcomes Two New Dealers
ZIMMERMAN'S SALES & SERVICE
2440 St. - Rt. 7
Columbiana, OH 44408
216/482-5190
ASHBY FARM SERVICE
RD 8 - Box 1A
Harrisburg, VA 22801
703/434-9943

CONTACT US

For
**SUPER GROUND DRIVE
TANK - SPREADERS
PIT - ELEVATORS**

COMPACT ROTO BEATERS

**WISCONSIN & ALLIS
CHALMER POWER UNITS**

**HAND-O-MATIC BUNK
FEEDERS**

**COMBINATION MOWER
AND CRIMPER UNITS**

455 AND 456 MOWERS

NEW IDEA CRUSHERS

NOW AVAILABLE
Crimping Rolls To Fit
Your New Idea Crusher
Speeds drying time approx. 1/2 day.

SMUCKER

WELDING & MANUFACTURING
2110 Rockvale Road
Lanc., PA 17602