

## Feed Supplements Critical To Milk Production

ST. LOUIS, Mo. — The key factor limiting milk production in most herds is feed with insufficient nutrients, says John Hess of John J. Hess II Inc. in Paradise, Lancaster County.

"Even good cows with an inbred capacity to consume and convert large quantities of feed won't produce up to their genetic potential if improperly fed," Hess says.

Cows should receive abundant feed with plenty of nutrients in correct proportions, he adds. "At

the onset of pregnancy, dairy cows must have enough nutrients for both milk production and building up and maintaining the developing fetus."

Getting a dry cow or heifer in proper condition is extremely important. Her condition at freshening largely determines the extent of her production, says the dealer.

"A deficiency of protein, energy, minerals or vitamins in the ration during the last two months of pregnancy may result in a weak or unhealthy calf. However, the cow's

condition can be controlled by proper feeding during the latter part of lactation as well as during the dry period.

"Modern feed production technology can help today's dairy farmers carry out feeding programs that suit their production goals by making nutritionally balanced supplements available," he adds. "A supplement will help dry cows and heifers build body reserves for the next breeding or lactation period," he says. "The blocks provide the necessary protein they require, in addition to selenium, magnesium and vitamins A and D in a precise formulation to balance roughages."

In addition, proper body condition before calving can mean up to 2,000 pounds of extra milk in the following lactation period, he notes. "These supplements assure dairymen their dry cows are getting the balance of nutrients needed for producing healthy calves and maintaining body condition," he concludes.

## New Grain Law Protects

### Maryland Farmers

ANNAPOLIS, Md. — A new grain law that went into effect last month should result in added protection to any Maryland farmer that sells or stores his grain. Effective July 1, 1986 changes in the Grain Dealers Licensing Law made by the 1986 Maryland General Assembly became law. The major change in the wording of the law was the definition of a "grain dealer".

Under the new law, "grain dealer" is defined as any person who is in the business of buying, receiving, exchanging, or storing grain from a person who grows grain. This does not apply to a farmer who buys, receives, exchanges, or stores grain for use in the farming business of that farmer.

Under the law a license may not be issued or renewed until the applicant has filed with the

Secretary a financial statement that is reviewed by a certified public accountant or a letter from a CPA. Each document must indicate that the applicant's grain business has a net worth of at least \$100,000 or he must post a surety bond in the amount of \$100,000 and present proof of insurance coverage. Anyone who violates this portion of the new grain law is guilty of a misdemeanor and upon conviction is subject to a fine of \$10,000.

"This law should help protect the farmer who is selling or storing his grain by assuring him that the person he is dealing with (when storing at time of licensing grain) is a licensed grain dealer who is financially stable and carries adequate insurance to protect his product until he (the farmer) is paid," explained Thomas O. Meredith, administrator, Maryland Grain Laws.

## FMC To Sponsor Soybean Leadership Conference

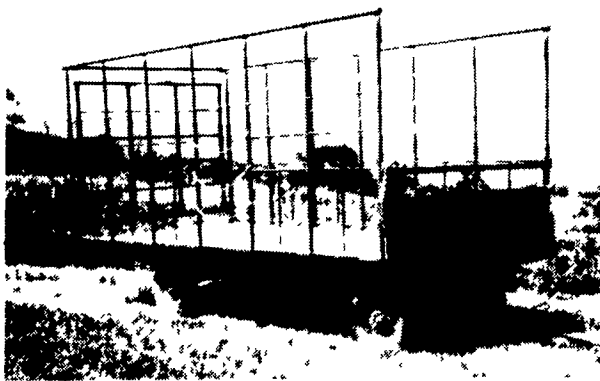
ST. LOUIS, Mo. — Farmers from across the nation, who hold leadership positions in soybean organizations will have an opportunity in August to learn more about the Soybean Association and to develop their leadership skills. The 75 soybean farmer leaders will travel to Princeton, New Jersey in mid-August for a two-day educational program of the American Soybean Association sponsored by FMC Corporation.

The farmer-leaders, all of whom serve on soybean organization boards of directors, will hear

soybean industry leaders discuss current challenges and opportunities. The two-day intensive educational program is designed to help the farmers develop more effective programs to help increase soybean farm profits in their states.

The conference program will include an update of ASA structure, policies and objectives, technical training and upgrading of communications skills, review of the agricultural economy, a presentation by FMC and several informal group activities.

## BEST BUY of the YEAR



- 6" Steel Main Beam
- 2" Vertical Tubing Drilled so that the 1" Horizontal tubing extends Full Length of Wagon
- Front-Side and Rear Loading and Unloading
- 2x8 Pressure Treated Lumber Floor
- 2x6 Oak Cross Beams
- Beds are 8' wide, available in 16, 18 or 21' lengths. Racks are 90" high.
- NEW FEATURE: 6" Channel across back for pushing wagon without damaging bed.

FOR FURTHER INFORMATION, CALL YOUR LOCAL DEALER:

LOST CREEK  
IMPLEMENT  
Oakland Mill, PA  
717-463-2161

MELROSE FARM  
SERVICE  
Greencastle, PA  
717-597-3138

KELLER BROS.  
Lebanon, PA  
717-949-6501

DUNKLE & GREIB  
Mill Hall, PA  
717-726-3115

WALTER G. COALE, INC.  
Churchville, MD  
301-734-7722

TOBIAS EQUIPMENT CO., INC.  
Halifax, PA  
717-362-3132

NORTHEAST  
DISTRIBUTING  
West Clifford, Pa.  
717-222-9020

VALLEY IMPLEMENT  
SALES  
Harrisonburg, VA  
703-434-9961

CHAMBERSBURG FARM  
SUPPLY  
Chambersburg, PA  
717-264-3533

OXFORD GREENLINE,  
INC.  
Oxford, PA  
215-932-2753

PAUL SHOVER'S, INC.  
Loysville, PA  
717-789-3117

A.B.C. GROFF  
New Holland, PA  
717-354-4731

CARLISLE FARM  
SERVICE  
Carlisle, PA  
77-243-4419

CLARK'S FARM SUPPLY  
Williamsport, PA  
717-494-0060

Manufactured By

## CLW MANUFACTURING, INC.

R.D. #2, Box 8  
Newburg, Pa. 17240  
717-423-6794



## WOOD - COAL - OIL HOT AIR FURNACES AND WOOD-COAL BOILERS

### FEATURES:

- \* Harman grate system for ultimate wood/coal performance
- \* Automatic draft system
- \* Heavy steel plate construction
- \* Airtight cast-iron doors
- \* External shaker lever
- \* 3-speed -- 100 cfm blower
- \* 5-yr. limited warranty (includes grates)
- \* Log Length 19", 23", & 27"
- \* Types of fuel: wood/coal (pea, nut, stove sizes)
- \* Option Available: Domestic Hot Water Coil

Wholesale To  
Heating & Plumbing Trade

## WALTZ ENTERPRISES INC.

30 S. Hershey Ave.  
(Barville) Leola, PA 17540  
(717) 656-6898

RD 1 Pleasant Valley Rd.  
Cogan Station, PA 17728  
(717) 998-2539

## KATOLIGHT!

THE PIONEER IN BRUSHLESS P.T.O. ALTERNATORS!! YEARS OF EXPERIENCE HAVE GONE INTO THE ADVANCED DESIGN OF THESE POWERFUL BRUSHLESS ALTERNATORS. THE RESULT IS THE UNIQUE COMBINATION OF...

★ 300% Surge Capacity: For Superior motor starting capabilities

★ Totally Brushless Design: For greater reliability and more positive voltage build-up after long periods of idleness



24 HR. EMERGENCY  
SERVICE BY RADIO  
DISPATCHED SERVICE  
PERSONNEL

Model Selection Chart

Model No	Watts	Momentary Surge Watts	Minimum Required HP	Volts	C B Amps	Phase	Wire	Approximate Wt	
								Net Lbs	Ship Lbs
25LR1	25 000	75 000	40	120 240	100	1	3	475	500
35LR1	35 000	105 000	55	120 240	150	1	3	580	600
45LR1	45 000	135 000	70	120 240	175	1	3	670	730
55LR1	55 000	165 000	86	120 240	225	1	3	730	750
85LR1	85 000	255 000	130	120 240	350	1	3	795	860

USED UNITS ALSO IN STOCK

Distributor for  
DE, MD, NJ & PA

**MARTIN MACHINERY**  
SALES - SERVICE - RENTALS  
P.O. Box 35, Martindale, Pa. 17549  
215-445-4585