

Livestock market and auction news

Eighty-Four Livestock

Eighty-Four, Pa.
Monday, July 21
Report supplied by PDA
CATTLE 311. COMPARED WITH LAST MONDAY'S MARKET: SLAUGHTER COWS weak to .50 LOWER...Choice slaughter steers 52.00-55.00, Good 49.25-52.25, Standard 44.50-48.50, Utility 37.50-42.00, few down to 33.75. Choice slaughter heifers 49.00-51.00, Good 47.00-51.00, Standard 40.00-45.25, Utility 35.00-39.50. Breaking Utility and Commercial slaughter cows 35.00-38.00, few to 39.50, one to 40.00, Cutter and Boning Utility 33.00-36.00, Canner and Low Cutter 28.00-33.50, Shells down to 17. Yield Grade No. 1, slaughter bulls 1000-1900 lbs. 43.50-50.00, No. 2 900-1500 lbs. 39.00-44.00. Feeder Cattle: Few Medium Frame No. 1, 400-650 lbs. steers 49.00-58.00, Few Large Frame No. 2, 600-900 lbs. steers 42.00-47.00. Medium Frame No. 1, 300-550 lbs. heifers 44.00-50.00, Large Frame No. 2, 400-600 lbs. 35.00-46.00. Medium Frame No. 1, 300-550 lbs. bulls 48.00-58.00.

CALVES 231: Few Choice vealers 66.00-70.00, Good 56.00-64.00, Standard and Good 90-120 lbs. 44.00-54.00, 60-85 lbs. 39.00-46.00, Utility 55-85 lbs. 30.00-36.00. Farm Calves: Holstein Bulls 90-120 lbs. 61.00-85.00, few to 91.00.

HOGS 120: Barrows & gilts 2.50-3.00 higher. US No. 1-2 210-240 lbs. 60.30-61.70, No. 1-3 200-250 lbs. 59.00-60.40, No. 2-3 (one lot) 258 lbs. at 58.10, No. 1-3 170-190 lbs. 41.00-45.00. Few US No. 1-3 400-690 lbs. sows 46.00-48.75. Boars 38.00-39.00.

FEEDER PIGS 4: Couple US No. 1-3 50 lbs. at 30.00 per head, and a couple No. 1-3 75 lbs. at 47.00 per head.

SHEEP 163: Spring slaughter lambs steady to weak, spots .50-1.00 lower. High Choice 75-85 lbs. 70.00-72.00, Choice 80-95 lbs. 68.00-71.00, Few Good 80-97 lbs. 55.00-57.00, Good and Choice feeder lambs 55-77 lbs. 68.00-71.00, Slaughter sheep 18.00-26.00.

GOATS 25: 11.00-28.00 per head.

New Wilmington Livestock Auction

New Wilmington, Pa.
Monday, July 21, 1986
Report supplied by PDA

CATTLE 194. Compared with last Monday's market: Slaughter cows steady. Few Choice slaughter steers 54.00-57.50, few Good 50.50-54.00, few Standard 45.00-48.75, few Utility 41.75-43.00. Few Choice slaughter heifers 54.75-57.75, one 50.50, few Good 45.50-49.75, few Standard 39.75-42.75. Breaking Utility and Commercial slaughter cows 37.00-40.50, few 41.50-43.00, Cutter and Boning Utility 34.00-38.50, Canner and Low Cutter 28.00-34.50, Shells down to 26.00. Few Standard slaughter bullocks 44.25-46.50. Yield Grade No. 1, 1150-2075 lbs. 43.75-46.00, few No. 2, 1245-1930 lbs. 37.75-41.00. Feeder Cattle: Few Medium & Large Frame No. 1, 400-715 lbs. heifers 41.00-46.75, few Medium & Large No. 2, 425-605 lbs. 30.50-37.00. Few Medium & Large Frame No. 2, 400-730 lbs. bulls 30.00-37.50.

CALVES 246: Few Choice vealers 66.00-72.00, few Good 55.00-

64.00, Standard and Good 90-120 lbs. 35.00-51.00, 65-85 lbs. 30.00-44.00, few Utility 50-60 lbs. 26.00-30.00. Farm Calves: Holstein Bulls 85-135 lbs. 49.00-95.00, Holstein Heifers 100-130 lbs. 48.00-60.00.

HOGS 317: Barrows and Gilts mostly 1.50 higher. US No. 1-2 215-240 lbs. 59.50-60.25, few lots 61.00 & 62.00, No. 1-3 210-250 lbs. 58.00-59.75, few No. 2-3 220-260 lbs. 55.00-58.00, No. 1-3 190-205 lbs. 48.00-52.50. Sows fully \$1 higher. US No. 1-3 210-580 lbs. sows 42.50-50.00, few No. 2-3 355-625 lbs. 38.00-42.00. Boars 32.00-39.50.

FEEDER PIGS 47: US No. 1-3 20-35 lbs. feeder pigs 20.00-38.00, one lot 45 lbs at 48.00 - all per head.

SHEEP 143: High Choice and Prime 65-85 lbs. spring slaughter lambs 64.00-74.50, few 76.00-77.00, couple small lots 76.00-77.00, few 55-65 lbs. 85.00-90.00, Choice & Prime 90-115 lbs. 55.00-66.00, one lot 69.00, Good & Choice 60-85 lbs. feeder lambs 52.00-70.00. Slaughter ewes 11.00-21.00.

GOATS 8: 12.00-28.00 per head.

New Holland Sales Stables

New Holland Dairy

Wednesday, July 23, 1986

Report supplied by auction

Reported receipts of 101 cows, 78 heifers and 6 bulls. Cow market lower; heifer market stronger.

Load of PA fresh cows, 750.00-1000.00.

Load of PA fresh cows, 490.00-580.00.

Load of Canada fresh cows,

670.00-800.00; springers 520.00-910.00.

Load of PA fresh cows, 520.00-635.00; springers 650.00-800.00.

Load of PA fresh cows, 630.00-875.00.

Load of Connecticut fresh cows, 750.00-1250.00; springers 685.00-1425.00.

Locally consigned cows 375.00-780.00.

Springing heifers 500.00-850.00.

Open Heifers 270.00-395.00.

Bulls 265.00-880.00.

Seeking Profits In Commodities Trading?

- Hedging
- Speculating
- Managed Account
- Commodity Options

Call Forney Longenecker, Commodities Investment Executive, At (717) 295-8914

SHEARSON LEHMAN BROTHERS
29 E. King St.
Lancaster, PA 17603

SHEARSON LEHMAN BROTHERS

AMERICAN EXPRESS



NOTICE

Due to Severe Drought Conditions in our Area and the need for hay, we are opening our hay and straw auction Thursday, July 31.

Same location, time, rules and terms will apply as in the past.

Frederick County Hay & Straw Auction

3810 Ballinger Creek Pike
Frederick, MD
Dan Poole, Manager
301-473-8100

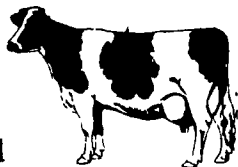
TOP PRICES FOR DOWN, CRIPPLED AND AS IS COWS, BULLS & STEERS

Slaughtered Under Federal Inspection
Paid On Dressed Weight

Tom Mulvaney
Livestock Trucking
(201) 454-4247

HANDLING: Warren, Hunterdon, Sussex And Somerset Counties, New Jersey

IN PENNA: Northampton, Bucks, Lehigh And Parts Of Carbon & Schuylkill Counties



ATTENTION FARMERS

EVERY MONDAY HATFIELD PACKING CO. and MOYER PACKING CO.

Will Receive Your Hogs and Cattle at the DANVILLE LIVESTOCK MARKET
RD 4, Danville, PA

- We will receive your hogs from 8 AM to 12 Noon every Monday. Your hogs will be weighed and paid for immediately.
- We will also accept your sows & boars.
- Your cattle will be received from 12:30 to 5 P.M. We will either pay you for your cattle immediately or you may sell them dressed weight.
- There will not be a commission or yardage fee deducted from your check.
- You may call our office Monday morning and we will be able to tell you the base price for hogs for the day.

MELVIN M. LEHMAN - Owner
Danville Buying Station

Phone: 717-275-2880

20 Head due between Aug. 4 & 11
17 Head due between Aug. 11 & 18
16 Head due between Aug. 18 & 28

50 to 60 Head WHITE DIAMOND GILTS
Here Now a new cross again. Large White & Landrace, first generation true F-1 gilts. Parent stock originated from Lieske Bros. Minnesota. Very productive in litter size and feed conversion.

Vaccinated for Lepto, Erysipelas, Rhinitis, E'Coli, Pasteurella

Hand mated with Breeding Dates

Local Trucker Available
No Hogs Sold On Commission

JOHN B. STOLTZFUS
R.D. 1, Kirkwood, Pa.

Abe Diffenbach, Auctioneer AU225L

NEXT SALE DATE AUGUST 29

OUR BUSINESS IS SERVICE TO FARMERS

Let us help you build a successful marketing program!

Call:

Ron Manley
Mike Orndorff
717-761-2740
800-382-1356



Grains & Livestock

- Forward Contracting • Hedging Services

CFS PFA COMMODITY FUTURES SERVICE, INC.

SWINE PRODUCTION SALES AND SERVICE

Complete Feeding Programs and Services

Feeding Programs to Meet Your Individual Needs

Computerized Record Keeping System

Providing Veterinarian Service

PA. Toll Free
1-800-468-5524



419 W. High Street
Elizabethtown, PA
17022

Supplying Farm Fresh Feeder Pigs

Marketing and Hedging Services

Marketing of Genesis Breeding Stock

Developing Individual Financial Programs

Direct Dial
(717) 367-1525