

1973 GMC Model 7500, tandem axle, dsl. w/automatic shift, 20' steel bed w/hoist, 4' sides, 44,000 GVW.
215-286-5298

SUMMER SPECIALS

* **DEMOLITION/END DUMPS**
26' to 36' Custom Built to Suit
Example: 30' Length, 60" Sides, Steel, American Made.
Call Now For More Details

***18,500**

SPECIAL
1986 22' Steel American Made
Dump, Like New, Excellent
Condition, 2-year Warranty
***14,900**

* **LOW-BOYS**
Any Size Custom Built
Example: 34½ ton, 2 axle, 22' bed w/out-riggers, low profile, detachable Gooseneck, American made, much, much more.
Call Now For More Details

***18,900**

* **TRANSFER TRAILERS**
Any Size Custom Built To Suit
KEITH WALKING FLOOR Transfer Trailers All New - Any Size
Example: 45' length, 13'6" high, fuel saver side, open top, expanded metal front & tailgate, KEITH WALKING FLOOR, extra duty floor, Pro Par 25,000 lb. axle, 56,000 lb. suspension plus much, much more, American made.

SPECIAL OFFER

***33,900**

Trucks & Rollbacks Available

BURKETT'S BODIES

Manns Choice, PA
814-623-9696

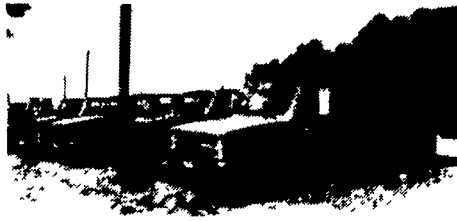


**HUNDREDS & HUNDREDS OF TRUCKS IN STOCK
SALES AND LEASING**

5.9% And 6.9% On Selected Trucks



Grumman Olson, Union City,
American Cargo, Hi Cabs &
Step Vans



Dump Truck, Stake Bodies,
Complete Line Of Chevy Pick-
ups including 6.2 Diesels, Cab
& Chassis and Med. Duties.

GOOD USED TRUCKS

- 1985 Chev K-20 H.D. Pickup
- 1984 Ford F350 Diesel 4x4
- 1983 Chev. C-30 HD Pickup
- 1982 Chev. 6.2 Diesel Pickup
- 1982 Chev. C30 Big Dually V8, AT
- 1981 Jeep Scrambler 4x4 Pickup
- 1980 Chev Beauville Loaded
- 1979 Bronco V8, 4 Spd.
- 1979 Chev. 4x4, V8, AT
- 1978 GMC Suburban 4x4, V8, AT, Air

Over 250 New & Used Trucks In Stock For Immediate Delivery

NOBODY BUT NOBODY UNDERSELLS...

LARRY MURPHY CHEVROLET

(TRUCK CENTER)

1 Mile South of Park City, Old Harrisburg Pike
Lancaster, PA

717-397-0601

717-397-0601

18' Bed w/hoist, 4 years old. 215-286-9802.

1970 IH 2000, 20' grain dump, tandem drive, 250 h.p. Cummins, 10 spd., P.S. \$8,000.
717-626-5438

1973 LNT9000 Ford, 318, 10-speed, road ready, \$5500. 1968 custom tank trailer, 8300 gallons, nice, \$6,000. Call 814-238-0339 from 8-5.

1974 Ford cab and chassis, one ton, F350, 10,000 GVW, dual rear wheels, motor good, cab needs work, \$1,500.
717-560-0387.

1980 Int. 1854S model, 466 diesel, power steering, 5+2 spd., 22' Morgan Van body; 1978 Int. 1800, 446 V8, 5+2, power steering, air brakes, 34,000 GVW, 38,000 original miles; (2) 1977 Int. 1800's, 404 V8, 5+2, power steering, air brakes, 32,000 GVW; 1977 Ford LN800, 391 V8, 5+2, power steering, 22' Duralite Van body, 27,500 GVW; 22' tandem steel dump trailer w/55" sides. 301-877-9889

**78 PETERBILT
COE**

400 Cummins engine, approx 560,000 miles, radial tires \$21,000

215-286-9510

36

**REAL
ESTATE**

For Sale: 10 Acres land and hunting camp bordering State Land, Middlebury Center area, 6 miles to Wellsboro, \$22,500. 607-594-2223 after 6pm

Mark VII - Pickups - Broncos - Bronco II - Stake Body - Crew Cab -

SHEEHY FORD LINCOLN MERCURY INC.

For All Your Farming Transportation Needs Through The F800 Series

BRONCOS DIESEL PICKUPS CHASSIS CAB CARGO VANS 4x4 RANGERS PICKUPS
BRONCO II SUPER CAB CREW CAB STAKE BODY BOX VANS XLT CUSTOM VANS

SHEEHY HOTLINE 717-272-7671

Unless This Emblem Is On Your Car Or Truck You Probably Paid Too Much



9-9 Daily
9-5 Sat.

SHEEHY LEBANON

Parts Dept. Open
Daily 8-5
Sat. 8-12

20th & Cumberland St., Lebanon

6.9%

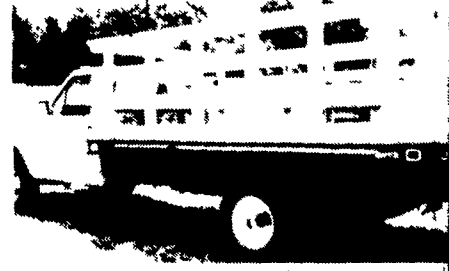
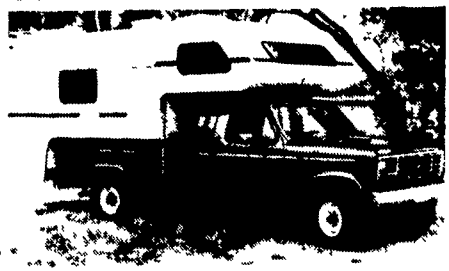
OR

Up To **\$600**

REBATES

On
Selected
Models

10% DISCOUNT ON ALL PARTS WITH THIS COUPON ONE PURCHASE PER CUSTOMER 10%



Tempo - Cougar - Continental - Town Car - 4x4 - Box Van - Rangers -

Custom Vans - XLT - Grand Marquis - Marquis -

Lynx - Topaz - Diesel Pickups - Mustang - T Bird