

Rough And Tumble Reunion Set Aug. 13-16

The "Time Machines" will be running at Rough and Tumble Engineers' Historical Association during their 38th Annual Threshermen's Reunion this August 13-16. That's what some folks call the massive steam traction engines which are a part of the collection of early farm, home and industrial machinery for which Rough and Tumble is noted.

Right now, the massive steam traction engines, threshers and tractors, their iron wheels rutted by countless trips through owner's fields, stand quiet. So tall you'd need a ladder to reach the top, these mechanical work horses of yesterday are now possibly laced with a few cobwebs, a bit of rust and dust. During the August 13-16 Reunion, however, the dust will stir and a kind of mechanical

symphony will begin.

Rough and Tumble is a museum dedicated to preserving equipment used years ago for the work-a-day tasks in industry and on the farm. Clattering, clunking, whistling, bellowing, smoke-belching steam traction and stationary engines, sawing wood, powering calliopes, and threshers into action are the focal point of the annual threshermen's Reunion.

It was in the late 1920s when gas powered combines made steam engines on the farm obsolete. Twenty years later, a few devoted enthusiasts of steam power organized a picnic similar to the ones threshermen enjoyed at the end of the harvest season. The picnic grew into Rough and Tumble Engineers Historical Association, with an annual

Threshermen's Reunion, where today visitors can enjoy the noise and nostalgia of equipment operating as it did back at the turn of the century.

If you love early gas engines, you will be happy to discover that half of Rough and Tumble's machinery is gas powered. You can find anything running there from very early "hit-n-miss" gas engines once used to pump water, shell field corn, wash clothes, or power a small mill, to large gas-powered tractors.

A special feature of this year's reunion will be a chronological display of many pieces of machinery made by the Hart-Parr/Oliver-White farm machinery company. If this name sounds strange, please remember that modern companies hold no

exclusive title to company mergers. A bit of history of these company names and how and when they merged, will be included in the demonstration narrative.

A Pageant of threshing is held daily as is a Cavalcade of Power. This mechanical parade features everything on the grounds of Rough and Tumble which can move under its own power, including those steam traction engines. Maneuvering them to parade position and through between the grandstands has been likened to "teaching dinosaurs to square dance."

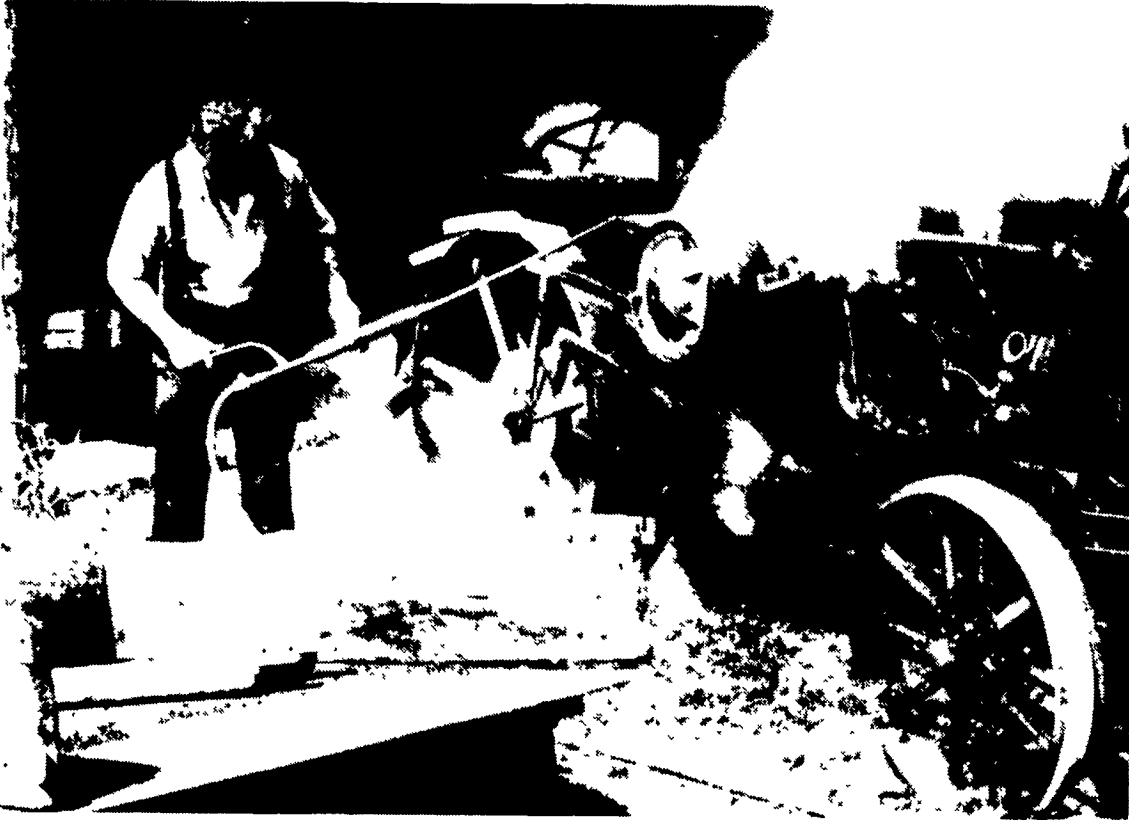
The reunion will feature a tent of items which could have been found in a turn-of-the-century hardware store, a museum building filled with early industrial steam engines — most of the running, and a front display of early farm and home implements such as butchering equipment, sausage stuffers, wooden washing machines, butter churns, seeders, corn shellers and early farm carpentry tools.

There is a whole building devoted to models which run on steam — meticulously built to scale with craftsmanship and precision. The latest addition is an outdoor miniature railroad track, 20' by 40', on which enthusiasts may run their own Gauge #1 - 3/4" 45 mm steam locomotives. If you have one, bring it to try on this new track. If you don't happen to have one of your own, do come and enjoy the others that will be there.

There is an operating saw mill, a shingle mill and a steam-powered stone crusher on the grounds. There will be displays of horse power (real horses) and a chance to ride a steam-powered scale model train or ride on a cart pulled by oxen. The Ladies Auxiliary and the Kinzer Fire Company will both be supplying delicious homemade food, along with several vendors who feature such past remembered items as Sassaperilla or Birch Beer.

Evening programs include a threshing demonstration and fiddlin' on Wednesday evening (with everyone welcome to join in the fiddlin'.) Thursday evening Warren Mercer will play for square dancing, so bring and swing your partner. Friday features steam and gas games and competition. This is a don't-miss evening with contests the like of which you have never seen before, like the "How slow can you go?" (without stalling) event and precision handling of tons of powered iron.

Admission during the four Reunion days is \$3 for adults and \$1.50 for children six to 10. Under six, the kids get in free (accompanied by an adult) and all admissions are cut to half-price at 6 p.m. Rough and Tumble is located approximately midway between Coatesville and Lancaster on Route 30. For additional information write: R & T, Box 9, Kinzers, PA 17535, or phone (717) 442-4249.



All-American Show Slated

HARRISBURG — The 23rd Pennsylvania All-American Dairy Show is slated to run from September 22 to 26.

Again this year over 2,000 head of cattle from about 25 state and Canada are expected.

Annually, this show hosts the

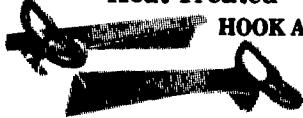
National Guernsey Show, the Eastern National Brown Swiss Show, the Eastern National Ayrshire Show, and the Eastern National Holstein Show. The All-American banquet will be held on Monday, September 22.

Special Chain Offer
Extended Thru July

HUSKY

Heavy Duty
REPLACEMENT CHAIN

- Heat Treated • All Chain Has 10 Yr. Warranty



HOOK AND EYE

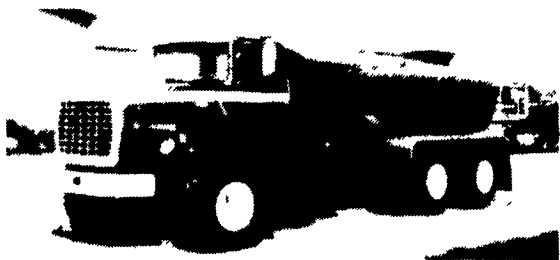


FORAGE LINKS

This Chain Will Replace Most Brands Of Chain

HUSKY LIQUID
MANURE EQUIPMENT

Replace Your MANURE TANK



Truck-Mount

Truck-Mount
or
Trailer-Mount

Tank Sizes (Gal.)
Available:

- 1200 • 2400 • 3600
- 1800 • 3000 • 5000

Husky-A Fine Line Of Good Equipment

24 Hrs. - 7 Days A Week - Refrigeration Service
Installation, Sales And Service

RAY SHENK
(Formerly Shenk's Farm Service)

505 E. Woods Drive

Lititz, PA 17543

(717) 626-1151

We Want To

PAY YOUR HEATING BILL \$\$\$

Gimmick? **NOT THIS TIME!**

In Celebration Of ALCOH'S 25th YEAR

ALCOH Is Going To **PAY**
The Heating Bills Of Its
Next **100** Customers.

Replace the windows in your home with ALCOH'S exclusive
8000 SERIES ARCHITECTURALLY CERTIFIED WINDOW
And We Will Pay Your Heating Bill!

SPECIAL ANNOUNCEMENT



926 STATE STREET • LEMOYNE, PA. 17043

25 Year Celebration Sale!!

Our Arrangement with our factory is **ONLY** for 100 homes!

Get Your Name In NOW!

Send Us Your Name & Address OR Call Collect

Name _____

Address _____

Phone No. _____

717-761-5011

ALCOH

ALUMINUM CO. OF HARRISBURG INC.



926 State Street
Lemoyme, PA 17043