

# Berks Co. DHIA

(Continued from Page D11)

Ontelynn Acres	3	124.6	88 0	15,925	603
Whirlwind Acres	B3	115 0	89 6	17,110	601
Raymond B Nolt	B3	86 6	83 5	16,937	600
Ronald Kelchner	B3	78 4	84 3	16,388	600
Clyde Loump	B3	56 9	85 0	16,668	599
Floyd Kurtz	B3	63 5	85 1	17,819	598
David J Williams	B3	44 9	83 5	17,038	597
Glenn R Harnish	B3	115 3	86 9	17,524	597
Donald Burkholder	B3	104 2	86 2	16,940	597
Ro Ria Farms	B3	208 3	89 4	16,180	596
William C Adams	B3	88 4	91 6	14,619	594
Pinnacle View Dairy	B3	46 8	85 8	16,508	593
Kur-Del Farm	B3	43 7	83 4	17,625	592
Robert L Sattazahn	B3	101 8	91 0	16,870	*592
Lester Martin	B3	44 9	83 5	15,992	591
Gary-Martha Heffner	B3	44 8	81 5	16,144	590
Harold Dietrich Hol	B3	33 2	90 5	17,487	590
Clarence C Sattazahn	B3	108 9	89 4	15,545	586
Terry Kunkel	B3	40 4	83 5	17,541	585
Pine Brook Farm	3	108 3	83 8	15,762	585
Landis R Martin	B3	40 6	86 5	16,133	583
John H Stump	B3	73 4	87 3	16,775	583
Teen Chal Farm	B3	118 5	86 9	16,608	582
Luke Snyder	B3	54 6	88 0	17,020	582
Alfred E Schmidt	3	57 5	88 2	16,447	581
Lynacres	3	190 0	88 9	16,131	580
Don Aloan	B3	46 0	83 6	16,308	579
David L Phillips	4	44 3	86 9	12,542	578
Ronald Weyer Holst	B3	59 2	82 5	16,668	577
Meadow Spring Farm	B3	54 4	83 4	16,992	576
Robert E Kieffer	B3	61 9	90 0	15,985	574
Charles D Moyer	B3	124 2	85 5	16,460	573
Wilmer Dreibelbis Jr	B3	109 5	83 1	16,068	573
Lawrence Kieffer	B3	90 3	84 4	15,847	572
David Y Knauer	B3	53 2	86 7	17,135	572
Eleanor K Siegfried	3	104 6	89 5	15,841	570
Lowell C Kurtz	B3	34 2	87 9	16,238	569
Ronald L O Neil	B3	49 0	86 4	15,408	569
Donald Rentschler	B3	60 1	85 3	16,481	568
Edward R Haas	G3	28 9	91 9	15,503	567
Albany Farm	B3	41 6	86 8	15,565	566
Glenn E Hoffman	B3	54 3	85 7	15,390	565
Poplar Drive Holsten	B3	45 5	90 0	15,405	565
Savidge Farms	B3	59 9	86 7	15,737	563
Charles W Wagner	B3	51 3	89 8	15,534	563
Clarelynn Farms	2	46 5	86 4	12,325	562
Jerry A Krone	2	16 7	86 5	12,374	559
Richard W Hoppes	3	69 1	85 1	15,862	559
Larry E Phillips	B3	34 5	84 9	15,268	558
Earl R Hafer	B3	111 0	87 7	15,351	557
Way Har Farms	B3	111 0	91 1	15,784	556
Jerry A Krone	B5	14 3	85 5	14,794	554
Richard Schlegel	B8	60 6	83 3	15,755	554
Carl H Rabenold	B3	62 8	84 3	16,597	552
Robert Yanos	B3	58 1	89 0	15,310	551
Rodger L Wagner	B3	126 9	90 0	15,049	550



# Perry County DHIA Monthly Report

May, 1986					
Ray E McMillen	3	72 6	87 0	21,003	772
Kenneth R Benner	3	62 3	87 6	20,771	741
J Ted Troutman Sons	B3	52 0	86 8	20,789	735
Byersholm Farms	B3	15 3	96 7	19,755	720
Carl E McMillen	3	81 5	88 4	18,975	715
Dumbelle Farms	B3	46 2	90 1	19,419	711
Richard L Maurer	3	54 4	87 1	19,750	700
Ed & Wilma McMillen	3	41 8	87 3	20,141	697
Nevin G Rice	B3	102 0	89 8	19,303	694
Donald Dum	3	37 8	87 9	18,861	691
Dean Loy & Son	B3	52 3	87 8	19,191	690
Robt & Bernice Gabel	3	43 0	87 9	20,014	683
Ed & Merrill Brotee	B3	134 9	84 5	19,027	682
Milligan Bros	3	66 3	86 8	19,371	679
Alrada Farms	B8	100 4	84 9	18,447	677
Bratton View Farms	3	74 7	88 1	19,147	676
Innerst Farm	G3	52 9	86 2	19,350	675
David H Weller	B3	57 3	86 7	18,508	672
Max Reapsome	3	58 8	84 5	18,840	670
Richard G Smith	3	58 4	87 4	18,621	667

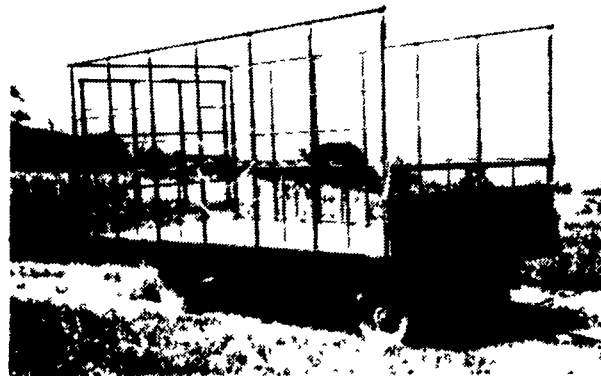
MW Smith Farms	B3	76 0	85 3	19,482	662
R Jack Crozier	B3	45 3	86 3	19,003	659
Benjamin E Dum	3	51 0	87 3	19,060	647
Carl R Martin	B3	64 8	86 1	19,351	646
Lyons Brothers	B3	65 3	90 8	17,780	644
Milmay Farm	3	55 5	85 7	17,723	643
WM E Martin & Sons	3	158 4	87 3	17,868	643
Arthur E Dum Jr	G3	48 6	91 9	18,147	639
Ronald W Shambaugh	B3	43 8	85 7	17,542	638
Dean & Eric McMillen	B3	52 9	83 4	16,721	636
John-Timothy Adair	G3	40 1	84 5	16,612	631
Oscar & Winie Campbell	B3	53 4	86 5	18,748	628
Melvin S Weaver	B3	68 6	85 3	18,108	626
Vernon B Burkholder	B3	51 7	90 2	18,214	625
Howard & Paul Barkley	B3	58 9	88 8	16,443	623
Perry M Kretzing	B3	91 5	87 6	16,908	622
O'Toole Bro's	B3	49 2	86 4	16,858	621
Daniel F Stoltzfoos	B3	40 3	84 7	17,389	611
Roy E Hall	3	35 3	90 1	16,901	609
Clark W Bower	B3	79 9	85 6	16,539	607
Dennis K Dum	B3	47 1	86 2	18,275	605
Edward Horn	B3	39 0	84 0	17,521	603
John L King	B3	46 7	87 0	17,412	601
Wayne-Gordon Stephens	B3	46 8	84 8	17,894	601
Edwin L Shebley	B3	59 8	84 4	16,784	601

Listed below are completed lactation of 700 lbs. of butterfat or over for May 1986.

Edwin L Shebley					
Patti	7 9	305	20,745	3 5	735
Teddy	6 7	305	19,622	3 7	718
Dobbs Brothers					
Pat	3 6	305	22,842	3 1	707
Cedar Lane Farm					
246	4 6	305	17,940	4 1	728
R Jack Crozier					
Sandy	11 1	305	21,589	3 5	749
Holly	7 6	305	21,855	3 3	731

(Turn to Page D13)

# BEST BUY of the YEAR



- 6" Steel Main Beam
- 2" Vertical Tubing Drilled so that the 1" Horizontal tubing extends Full Length of Wagon
- Front-Side and Rear Loading and Unloading
- 2x8 Pressure Treated Lumber Floor
- 2x6 Oak Cross Beams
- Beds are 8' wide, available in 16, 18 or 21' lengths. Racks are 90" high.
- NEW FEATURE: 6" Channel across back for pushing wagon without damaging bed.

FOR FURTHER INFORMATION, CALL YOUR LOCAL DEALER:

- |   |  |  |
|---|--|--|
| <p><b>LOST CREEK IMPLEMENT</b><br/>Oakland Mill, PA<br/>717-463-2161</p> <p><b>MELROSE FARM SERVICE</b><br/>Greencastle, PA<br/>717-597-3138</p> <p><b>KELLER BROS.</b><br/>Lebanon, PA<br/>717-949-6501</p> <p><b>DUNKLE &amp; GREIB</b><br/>Mill Hall, PA<br/>717-726-3115</p> <p><b>WALTER G. COALE, INC.</b><br/>Churchville, MD<br/>301-734-7722</p> | <p><b>TOBIAS EQUIPMENT CO., INC.</b><br/>Halifax, PA<br/>717-362-3132</p> <p><b>NORTHEAST DISTRIBUTING</b><br/>West Clifford, Pa.<br/>717-222-9020</p> <p><b>VALLEY IMPLEMENT SALES</b><br/>Harrisonburg, VA<br/>703-434-9961</p> <p><b>CHAMBERSBURG FARM SUPPLY</b><br/>Chambersburg, PA<br/>717-264-3533</p> | <p><b>OXFORD GREENLINE, INC.</b><br/>Oxford, PA<br/>215-932-2753</p> <p><b>PAUL SHOVER'S, INC.</b><br/>Loysville, PA<br/>717-789-3117</p> <p><b>A.B.C. GROFF</b><br/>New Holland, PA<br/>717-354-4731</p> <p><b>CARLISLE FARM SERVICE</b><br/>Carlisle, PA<br/>77-243-4419</p> <p><b>CLARK'S FARM SUPPLY</b><br/>Williamsport, PA<br/>717-494-0060</p> |
|---|--|--|

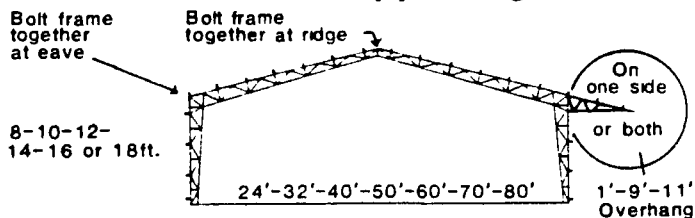
Manufactured By

# CLW MANUFACTURING, INC.

R.D. #2, Box 8  
Newburg, Pa. 17240  
717-423-6794

# PERKA BUILDINGS

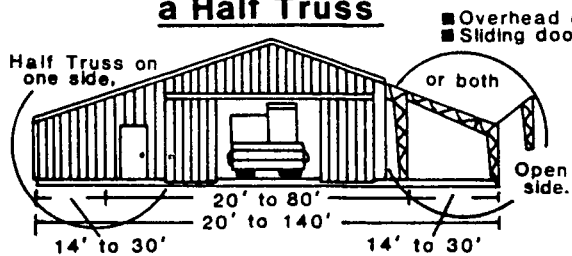
A size to suit your needs with or without Self-supporting Lean to.



FARM • COMMERCIAL • INDUSTRIAL

3"-12" Roof Pitch for more over head space.

For extra floor space at a low cost add a Half Truss



- OPEN CEILING-25% MORE USABLE SPACE.
- NO ROT-ONLY STEEL TOUCHING CONCRETE.
- EXPANDABLE-ADD ON LATER BY SIMPLY REMOVING ENDWALL SHEETING.
- EASY TO INSULATE.
- 40 YEAR WARRANTY ON STEEL COLUMN & TRUSS.
- 20 YEAR WARRANTY ON STEEL CLADDING.
- 8 MODELS TO CHOOSE FROM CUSTOM DESIGN AVAILABLE.
- DO IT YOURSELF OR HAVE US ERECT IT FOR YOU.

Get Your FREE Perka book

To: PERKA BUILDINGS SYSTEMS  
Box 166, RD #2  
New Holland, PA 17557

Name \_\_\_\_\_  
Address \_\_\_\_\_  
Town/City \_\_\_\_\_ County \_\_\_\_\_  
Telephone No \_\_\_\_\_ Postal Code \_\_\_\_\_  
I am interested in the following type of building:  
Width \_\_\_\_\_ Length \_\_\_\_\_ Size of Door \_\_\_\_\_  
Implement Shed | Dairy | Hog | Other  
Workshop | Loose Housing | Stable  
Industrial | Commercial | Riding Arena  
Date of Planning To Build \_\_\_\_\_

or Call Now  
(717)  
354-4740

Fill out this card and mail it today