



Pennsylvania Dairy Herd Improvement Association

# Lycoming County DHIA Monthly Report

Owner	Brd.	Age	No. Cows	Days In Milk	Lbs. Milk	Lbs. Fat	
<b>LYCOMING COUNTY DHIA</b>							
<b>May, 1986</b>							
Don & Scott Lepley*	R&GR	H	37	4	88.5	21,345	763
Eugene W Hall	RH		71	8	89.7	19,547	755
Marshall Bros Inc	RH		123	2	86.1	17,611	743
Voll Dairy Fm*	R&GR	H	42	9	87.8	19,168	734
Dale F Cooley	R&GR	H	40	0	89.8	20,432	718
Schon-Crest Farms	R&GR	H	44	9	89.3	20,952	717
Willard M Brelsford	R&GR	H	40	4	88.7	18,025	713
El Yvo Metzger*	GR	H	41	8	88.7	19,048	713
Franklin J Finck	RH		92	5	90.5	18,820	712
Marvin L Waltz	R&GR	H	65	2	86.6	18,634	710
Bar-Vista Farm	R&GR	H	45	9	87.6	19,447	701
Benjamin McCarty	R&GR	H	41	6	85.8	18,425	681
Sandward Farm	RH		29	0	85.4	18,951	678
Kenneth Baistian	GR	H	34	2	88.4	18,306	670
Steppe Brothers	RH		87	5	87.6	17,258	668
Fred & Scott Lovell	R&GR	H	40	4	85.8	18,466	665
Linden-Hills Farm	RH		33	5	86.2	18,209	662
Lester M Poust	RH		64	2	83.9	17,615	662
Mont Will Farms	R&GR	H	43	7	86.4	18,025	662
Charles F Ulmer Jr	R&GR	H	40	9	86.1	18,650	659
John Snyder	RH		45	4	86.5	18,033	659
Samuel & Larry Fry			4-5		22,458	779	305
Cleo							
Stephen R Waltz			3-10		19,327	786	305
34-77							
Lester M Poust			3-2		19,091	789	305
#Kathie			4-9		18,562	822	305
#Phili							
Don & Scott Lepley			4-5		19,321	753	305
Wendy22							
Willard M Brelsford			4-2		20,639	859	305
Blacky							
Stanley Warn			4-2		19,060	772	305
Goldie							
Steppe Brothers			7-7		19,756	761	305
Glory18							
Eugene W Hall			6-7		22,464	854	305
Laurie			7-10		19,242	858	305
Blizz							
Marshall Bros Inc			12-10		20,312	818	305
B 141			5-9		20,390	826	305
Petey			4-6		19,100	762	305
251			3-10		18,813	814	305
260			3-9		17,934	846	265
265							
Schon-Crest Farms			4-5		25,559	864	305
Polly							



**READ LANCASTER FARMING FOR COMPLETE AND UP-TO-DATE MARKET REPORTS**

## COW MATS

Use our unique method of installing a one piece mat under a row of cows. Prevents movement of mat and bedding from creeping underneath.

All "row" and single mats are cut from heavy one inch rubber belting.

**SAVE COWS, TIME & BEDDING**

**SAVE 40%**

on

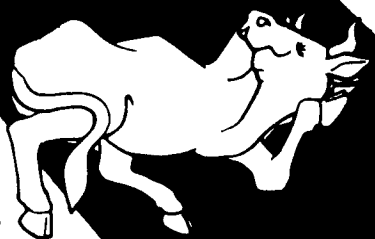
**New Replacement Belts For Farm Machines**

• **Bale Thrower Belts \$70.00**

• **Grove-Gehl-Int.-S.U. Wagon Box Belts \$120 to \$150**

Also Available **Bean Picker Belts & Big Round Baler Belts**

Flat belts shipped same day as order



Any flat belt can be custom made for your farm machinery (cleats installed). Belts shipped same day by UPS.

For more information, write:

**Bob Gabel**

Rt. 16, Chaffee, New York 14030

**CALL TOLL FREE: 1-800-537-3003**

**Phone Collect: 716-496-6025**

Chris  
Eldon Yvonne Metzger  
47  
Rodger & Owen Swartz  
29  
Benjamin E McCarty  
12  
Sandward Farm  
10Wendy

3-9 22,978 771 305  
4-2 20,697 790 305  
5-7 20,692 779 305  
5-7 24,291 862 305  
3-4 23,302 789 305

66  
Marvin L Waltz  
Vicky  
Mandy  
J David & John Jarret  
147  
Franklin J Finck  
28Debbi  
58 Lucy

5-6 21,733 778 305  
5-2 19,474 812 271  
2-5 20,195 796 306  
4-3 26,763 791 305  
4-0 22,391 756 305  
3-5 23,507 879 305

# NEW DEALER

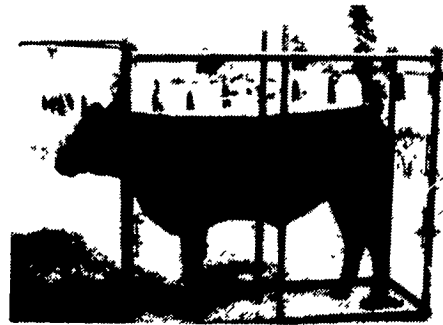


**For Cumberland Co. and Surrounding Areas**



## FARM & BARN EQUIPMENT

- Blocking Chute
- Automatic Headgate
- Headlocks
- Suspended Comfort Stalls
- Hay Feeders



- Loop Stalls
- Pail Holder
- Calf Pen Front
- Bale Moves
- Farrowing Crate
- Feed Thru Fence
- Gates & Fencing

## GLENNWOOD METAL SPECIALS

**29 Gauge Painted Steel**

- Gold
- Dark Brown
- Tan
- Dark Blue
- Red

For Only

**\$38.00**

Per Covered Sq.

*While Supplies Last*

## PLUS OUR REGULAR METALS

.024 Mill Finish Aluminum

29 Gauge Galvanized

26 Gauge Painted Steel

28 Gauge Galvalume

Painted White Aluminum

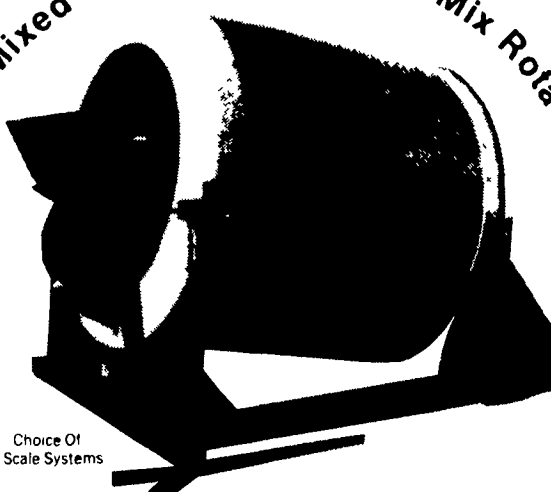
*We Will Cut To Any Lengths*



**IS NOT HERE TO MEET THE COMPETITION**

**WE ARE AHEAD OF THEM!**

*Total Mixed Ration with Tumble Mix Rotation*



- \* Stainless Steel Mixing Drum
- \* Beam or Digital Scale
- \* Dependable Drive Train

Choice Of 2 Scale Systems

- \* Lowest HP Requirements
- \* Lowest Maintenance
- \* Thoroughly Mixed Rations

**AND IT IS AFFORDABLE**

*Check Our Prices*

*Call Today*

**Robert N. Zimmerman**

R.D. #2 Box 299 Newville, PA 17241

**(717) 776-5951**