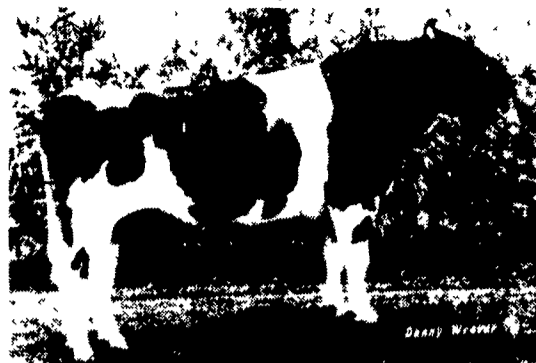


+1,942 PDM +\$172 +.86 PDT

+\$210 +1,850 PDM



8H1301 Sun-Ben BERLIN



8H922 Moodys Pat TROY

Code 8 Holstein July 1986 USDA Sire Summary

SIRE	PREDICTED DIFFERENCES					PROTEIN			HFA TYPE		
	MILK	TEST	FAT	VALUE	RPT	%	LBS.	\$	RPT	PDT	RPT
8H922 Troy	+1,850	-.03	+ 61	+\$210	99%	-.08	+43	+\$192	99%	-.72	97%
8H1205 Scott	+1,610	+.01	+ 60	+\$194	81%	-.03	+44	+\$186	80%	N/A	N/A
8H1301 Berlin	+1,942	-.19	+ 34	+\$172	81%	-.11	+41	+\$147	81%	+.86	64%
8H1034 Bachelor	+1,202	+.08	+ 59	+\$168	81%	+.01	+38	+\$168	78%	N/A	N/A
8H416 Pepper	+1,531	-.10	+ 37	+\$152	84%	-.11	+28	+\$128	84%	-.42	74%
8H1276 Sundancer	+1,261	+.00	+ 46	+\$151	77%	+.00	+40	+\$150	77%	+.05	66%
8H398 Steady	+ 986	+.10	+ 54	+\$147	74%	+.01	+33	+\$149	73%	+2.05	61%
8H1039 Graydawn	+1,151	+.04	+ 48	+\$147	91%	-.08	+22	+\$130	90%	N/A	N/A
New! 8H1350 National	+ 952	+.10	+ 53	+\$144	65%	+.07	+43	+\$158	64%	-.42	61%
8H1258 Starwar	+1,178	+.01	+ 44	+\$142	76%	+.00	+37	+\$142	75%	+.90	61%
New! 8H114 Spike	+1,150	-.04	+ 34	+\$124	63%	N/A	N/A	N/A	N/A	+.52	70%
8H90 Lannie	+1,338	-.13	+ 23	+\$117	71%	N/A	N/A	N/A	N/A	+1.20	69%
8H421 Nate	+1,161	-.07	+ 29	+\$117	71%	-.01	+35	+\$114	71%	-.07	65%
8H1082 Warsaw	+ 882	+.04	+ 39	+\$117	85%	+.00	+29	+\$117	82%	-.84	70%
8H1306 Merit	+ 150	+.34	+ 65	+\$116	83%	+.10	+22	+\$135	82%	+.50	72%
New! 8H1381 Poppie	+1,121	-.06	+ 30	+\$116	78%	-.05	+26	+\$105	77%	N/A	N/A
8H96 Country Boy	+1,208	-.09	+ 26	+\$115	65%	N/A	N/A	N/A	N/A	+.55	63%
8H1122 Walworth	+1,217	-.11	+ 24	+\$112	88%	-.04	+30	+\$102	81%	+.47	54%
8H1280 Behavior	+1,284	-.13	+ 21	+\$111	84%	-.04	+32	+\$101	79%	N/A	N/A
8H341 Stewart	+ 584	+.14	+ 46	+\$110	85%	+.05	+27	+\$120	84%	+.70	77%
New! 8H1351 Potential	+ 919	-.01	+ 31	+\$106	71%	-.06	+18	+\$ 93	71%	N/A	N/A
8H1033 Mutual	+ 724	+.06	+ 37	+\$104	87%	+.16	+51	+\$136	86%	-1.39	71%
8H1158 Skyler	+1,167	-.11	+ 21	+\$104	82%	-.11	+16	+\$ 80	80%	+1.48	67%
8H1202 Vernon	+1,011	-.06	+ 26	+\$103	77%	-.08	+16	+\$ 84	75%	+1.27	66%
8H1208 Dial	+1,131	-.10	+ 22	+\$103	80%	-.04	+28	+\$ 94	79%	-.84	63%
8H1221 Kappa	+ 569	+.12	+ 42	+\$103	77%	-.05	+ 9	+\$ 92	76%	-1.38	50%
8H346 Rusty	+ 721	+.06	+ 36	+\$102	57%	+.02	+25	+\$104	57%	+.87	48%
8H1195 Ambassador	+1,011	-.07	+ 23	+\$ 98	79%	-.06	+21	+\$ 85	78%	N/A	N/A
8H410 Invincible	+1,289	-.19	+ 11	+\$ 95	69%	-.08	+25	+\$ 76	69%	+.59	59%
New! 8H435 Kasper	+ 790	+.01	+ 27	+\$ 91	60%	-.04	+17	+\$ 82	60%	+1.45	59%
8H1095 Exclusive	+ 847	-.03	+ 25	+\$ 91	86%	-.03	+20	+\$ 83	85%	+.20	53%
8H1068 Truxton	+ 525	+.09	+ 35	+\$ 89	90%	-.04	+ 9	+\$ 80	83%	+1.39	68%
8H376 Andy	+ 829	-.04	+ 23	+\$ 87	82%	-.06	+15	+\$ 74	82%	+.51	69%
8H9202 Mariner	+1,034	-.13	+ 14	+\$ 85	99%	-.05	+23	+\$ 73	99%	+.24	98%
New! 8H438 Kelsey	+ 507	+.08	+ 32	+\$ 83	69%	+.06	+26	+\$ 94	68%	+.29	58%
8H452 Mil-Nor	+ 771	-.04	+ 21	+\$ 80	98%	-.09	+ 9	+\$ 63	98%	+1.47	94%

Our selection has never been greater!

Call Atlantic Professional Service today for top genetics with high repeatability at affordable prices.



PA: 800-732-0391

DE, MD & NJ: 800-233-0216

LOCAL: 569-0411

PARTNER IN **G** FEDERATED GENETICS