

**Central U.S. Carlot**

**Pork Report**

Wednesday, July 16

Report supplied by USDA

Central U.S. Carlot Pork Report FOB Omaha basis (includes the major production areas in the midwest) as of 3:30 P.M.

Compared to Tuesday's 3:30 P.M. report, fresh pork loins 14-18 lbs. 6.50-7.00 higher, picnics 4-8 lbs. 1.50 lower, Boston butts 4-8 lbs. 5.00-8.00 lower; skinned hams 3.00-8.00 higher; sds bellies 10-14 lbs. 3.00-9.50 higher, 16-18 lbs. 1.00 lower; other cuts generally steady. Trade slow to moderate for light offerings and light to moderate demand.

U.S. No. 2 175 lb. pork carcass cutout value advanced \$1.05 to an estimated \$77.81 per/cwt.

Sales reported on 22 loads of fresh pork cuts, and 14 loads of trimmings and boneless processing pork.

**Fresh Pork Cuts**

FOB Omaha Basis

Loins, Regular, Fresh

14-18 lbs. 7 loads 110.00-118.00,

mostly 112.00.  
18-22 lbs. 112.50-118.00 D.  
22/Up 88.00 A.

Tenderloins,  
2/Bag

Picnics, Regular

4-8 lbs. PL 55.00.

8/Up lbs. 55.00 A.

Boston Butts

Spareribs, Fresh

4-8 lbs. 2 1/2 lds. 95.00-99.00.

1.5-3.5 lbs. 1 ld. 133.50.

3.5-5.5 lbs. PL 105.50.

Spareribs, Frozen

3.5-5.5 lbs. 102.50-109.00 A.

Loin Backribs

1.5/DN lbs. PL 307.00.

1.75/DN lbs. PLS 297.00-300.00.

1.75-2.25 PL 275.00.

Hams, Skinned

Fresh

14.17 lbs. PL 91.00.

17-20 lbs. 2 1/2 loads 90.00-91.00.

20-26 lbs. 1 1/2 loads 90.00-91.00.

26-32 lbs. 1 ld. 78.00.

32/Up lbs. 1 ld. 75.00.

Hams, Skinned,

Frozen

17-20 87.00 A.

Bellies, Sdls,

Skin On, Fresh

10-12 lbs. PL 86.00.

12-14 lbs. PL 91.00.

14-16 lbs. PL 91.00.

16-18 lbs. 1 ld. 85.00.

18-20 lbs. 86.00 E.

20-25 lbs. 75.00 E.

Bellies, Sdls,

Skin On, Frozen

10-12 lbs. 81.00 C.

12-14 lbs. 2 lds. 89.00.

14-16 lbs. 85.50 D.

16-18 lbs. 84.00 D.

Pork Trimmings/

Boneless Processing Pork

(Chemical Lean)

Combo 42% Fresh 1 load 58.00.

Boxed Frozen 54.00 D.

Combo 72% Fresh 6 loads 77.75-

83.00.

Boxed Frozen 4 lds. 78.00-80.00.

Picnic Cushion Meat

Combo 92% Fresh 110.50 D.

Bals Picnic

Combo 72% Fresh 2 lds. 86.00-

87.00.

Boxed Frozen 86.00 A.

Skinned Jowls

Combo Fresh 1 ld. 54.00.

Boxed Frozen 50.50 B.

Cured and Processed

**Meats**

Hams, Smoked,

Skinned, Water

Added

16-19 lbs. 93.00-108.00.

19-23 lbs. 90.00-108.00.

Picnics, Smoked,

Water Added

4-7 lbs. 65.00-73.00.

Bacon, Sliced,

Vac. Pack

1 Lb. Pkg. 154.00-217.00.

\*ABCDE After Market Quotes

Represents Days Since Last Actual

Reported Sales. Market Quotes

After Five Days Without Trade

Will Be Dropped.

**Valley Livestock**

Athens, Pa.

Monday, July 14

Report supplied by auction

Holstein Hfr. Calves 55.00-65.00.

Veal Calves 65.00-79.00.

Vealer Bull Calves 65.00-74.00.

Slaughter Calves 45.00-50.00.

Grassers & Feeders 34.00-45.00.

Lambs 50.00-69.00.

Sheep 18.00-30.00.

Hogs, 200 to 250 50.00-56.00.

Sows 36.00-48.00.

Boars 30.00-35.50.

Pigs 15.00-35.00.

Heifers 36.00-42.50.

Steers 38.00-42.50.

Steers, feeder 38.00-48.00.

Bulls 38.00-49.00.

Cows, utility 34.00-36.00, Top 39.

Cows, fat 34.00-36.00.

Cows, medium 33.00-34.00.

Cows, poor or small 26.00-32.00.

Cattle Market unsettled.

Calf Market steady to easier.

Horses small to 135.

Ponies none.

Goats 10.00-33.00.

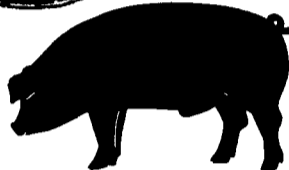
Feeder Sale 1st Monday of Each

Month.

Dairy Sale 3rd Thursday of Each

Month.

**Gwaltney of SMITHFIELD, LTD.**



**RECEIVING HOGS:**

**LANCASTER COUNTY FARMERS**

MONDAYS: McCoy's Branch Office, Bareville

WEDNESDAYS: (Next to Bawells Butcher Shop)

& FRIDAYS: on Butler Rd. 717-656-9668

TUESDAYS: B & R Cattle

THURSDAYS: Marietta

717-426-3258

**YORK COUNTY FARMERS**

MONDAYS: Stewartstown

717-993-2564

TUESDAYS: Thomasville

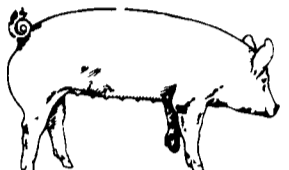
717-792-2248 or 9836

Contact for information:

Ed Herrmann, 717-284-3203

or Charlie Kauffman, 215-593-5674

Future forward contracts available



**EMERY'S BUYING STATION**

**OPEN TO RECEIVE YOUR MARKET HOGS**

**AT THE GREEN DRAGON MARKET RD 4, EPHRATA, PA 17522 1 MILE NORTH OF EPHRATA ON NORTH STATE STREET.**

**HOURS: MONDAY, TUESDAY, and WEDNESDAY 6:00 A.M. to 11:30 A.M. 215-458-5677 Residence 717-733-9648 Office**

**YOU ARE PAID FOR YOUR HOGS IMMEDIATELY**

Ken & Lois Emery, Proprietors

**Green Dragon Livestock Sales**

Location: Ephrata RD 4. 1 mile N. on North State St., Ephrata.

**COWS COWS COWS SALE EVERY FRIDAY**

Lots of good Northern Feeder & Stockers. Slaughter Cows - Bull Steer, Veal-lamb

11:00 A.M.-Beef Sale 200-300 each week.

1:00 P.M.-Dairy Sale.

7:00 P.M.-Small Animal Sale.

For Special Sales and Herd Dispersals on farm or at our barn or other market information call: Office 717-733-2444, Home 717-838-4318.

**WALTER H. RISSER, Proprietor**

All out of state and new buyers must have cash or certified check or current letter of credit from bank.

**HAY & STRAW SALE**

12:00 Noon

Every Wednesday Westend of Avondale at the intersection of Baltimore Pike and Route 41.

Harvey Z. Martin

215-268-3604

(Office)

215-445-5303

(Residence)

**KING'S AUCTION**

**KIRKWOOD**

Hay, Straw and Grain Auction

**EVERY TUESDAY**

12:00

Located Rt. 472 5 miles south of Quarryville or 6 miles north of Oxford at Shaub's Auction House

Lloyd H. Kreider,

Auctioneer

AU-000513L

No out of state checks

**ALL TRUCKERS AND FARMERS WELCOME**

**MELHORN SALES, SERVICE, TRUCKING CO.**

1010 W. Main St., Mount Joy, PA 17552

The only full service company, in this area, to handle the total needs of the poultrymen.

Which Includes:

- Area distributor of a complete line of Bio-Guard Poultry & Swine sanitation products. including: sow shampoo, field disinfectants, hatchery disinfectants, egg wash.
- DEKALB chicks & started pullets sold by Clay Mumma, Nelson Groff & Harold Mishler.
- Complete loading & unloading of pullets & spent hens.
- New modern dollie equipment to move your pullets fast and efficiently with minimum stress to the pullets.

*Place Your Confidence In A Full Service Company That Wants To Be Worthy Of Your Business*

For More Information Phone:

717-653-1102

Monday - Friday 8:30 AM - 4:00 PM



DEKALB



MELHORN  
DEKALB SALES • SERVICE • TRUCKING