

### Chambersburg Livestock

Chambersburg, Pa.  
Thursday, July 17

Report supplied by PDA

CATTLE: 293. Choice steers no trend. 1170-1570 lb. 55.00-60.00; few Good 46.85-50.75; few Standard 39.00-41.00; few Choice heifers 46.35-48.75; few Good 45.00-47.25; few Standard 40.00-44.50; Breaking Utility & Commercial cows 34.50-37.50; Cutter & Boning 33.85-37.00; Canner & Cutter 30.50-34.00; YG No. 1, 1220-1950 lb. bulls 44.25-47.85. FEEDER CATTLE: Bulls Few Med. No. 1, 300-695 lb. 42.00-44.00. CALVES: 538. Choice 57.50-

66.50; Good 50.00-55.00; 70-100 lb. 40.00-47.00; hol. bulls 90-130 lb. 45.00-87.00; heifers 90-125 lb. 46.00-78.00.

HOGS: 25. 2 lots of No. 2-3, 225-240 lb. 60.35-61.10; sows No. 1-3, 300-550 lb. 44.75-48.75.

FEEDER PIGS: 23. 1 lot 25 lbs. 36.00.

SHEEP 37. Few Good & Choice 50-85 lb. 49.00-53.00.

### Leesport Livestock

Leesport, PA

Wednesday, July 16, 1966

Report Supplied by PDA

CATTLE 339. Compared with last Wednesday's market: Slaughter steer uneven, spots .50 to

1.00 higher. Slaughter cows uneven, weak. High Choice and Prime 1160-1390 lbs. Steers 57.50-59.35, one 56.50, Choice 1035-1510 lbs. 53.25-57.25, Choice 4-5 50.00-55.10, Good 49.00-54.00, Standard 42.50-49.00, Choice Holsteins 48.00-50.10, Good 43.25-46.85, Utility 39.25-40.75. Choice Slaughter Heifers 52.75-55.00, Good 48.00-49.00, few Standard 40.50-46.00. Breaking Utility and Commercial Slaughter Cows 36.00-39.10, Cutter and Boning Utility 33.75-36.50, Canner and Low Cutter 28.85-34.50, Shells down to 26.85. Few Choice Slaughter Bullocks 47.00-48.60, Good 45.35-46.00. Yield Grade No. 1 1010-1930 lbs. Slaughter Bulls 44.50-51.60, one 53.00, few #2 1015-1255 lbs. 42.75-44.75.

FEEDER CATTLE: Large Frame No. 1 450-700 lbs. Steers 49.25-51.00, Medium #1 320-600 lbs. 50.00-63.50. Medium Frame #1-2 310-500 lbs. Heifers 35.00-40.50. Medium Frame No. 1 425-500 lbs. Bulls 45.50-47.00.

CALVES 165: Vealers steady to weak. Few Choice 75.00-80.00, few Good 65.00-70.00, Standard & Good 75-115 lbs. 40.00-45.00, Utility 70-115 lbs. 28.00-40.00. Good and Choice 190-300 lbs. Slaughter Calves 48.00-56.00. Farm Calves: Holstein Bulls 90-130 lbs. 47.00-97.00, mostly 55.00-85.00; few Holstein Heifers 95-105 lbs. 47.00-53.00. Few beef cross bulls and heifers 80-120 lbs. 50.00-68.00, one 97.00.

HOGS 370. Barrows and gilts .50 to 1.00 higher. US No. 1-2 200-240 lbs. 60.75-62.25, No. 1-3 200-265 lbs. 59.00-61.25, No. 2-3 245-265 lbs. 55.75-58.85, No. 1-3 175-200 lbs. 51.50-59.25. SOWS 2.00 to 5.00 lower. US No. 1-3 390-630 lbs. sows 42.00-47.50. Boars 30.50-35.50, light

weights 37.00-41.00.

FEEDER PIGS 322. US No. 1-3 20-30 lbs. Feeder Pigs 100.00-107.00, 30-40 lbs. 102.00-113.00, one lot 90.00, 40-50 lbs. 88.00-98.00, 50-70 lbs. 76.00-82.00, 80-85 lbs. 62.00-68.00 - All per hundredweight.

SHEEP 47. High Choice and Prime 50-60 lbs. Spring Slaughter Lambs 70.00-81.00, few 72-90 lbs. 74.00-77.00, one 50 lbs at 100.00, Choice 50-60 lbs. 66.00-73.00, few good 55-60 lbs. 66.00-68.00. Slaughter Ewes 27.00-41.00. Few Yearlings 47.00-52.00.

GOATS 12. Large 30.00-45.00, one 54.00, kids 21.00-30.00 - all per head.

### Omaha Weekly

Thursday, July 17

Report Supplied by USDA

CATTLE: 1632. Compared to Wednesday slaughter steers steady to .50 lower; slaughter heifers fully steady; cows steady to weak; bullocks steady; bulls mostly steady. Supply included 70 percent slaughter steers and 19 percent cows.

SLAUGHTER STEERS: High Choice and Prime 2-3, few 4 1100-1325 lb. 58.10-60.50; Good and Choice 1-2 1100-1325 lb. 57.50-60.00, few 60.00-61.00; Choice 2-3, few 4 1100-1400 lb. 56.50-59.25, several lots early 59.25-60.00, 3-4 1250-1450 lb. 51.25-56.50, few head Choice 3 1420-1500 lb. 57.00-60.00, few 1675-1850 lb. 50.00-52.50; high Good and low Choice 2-3, 1000-1350 lb. 52.00-56.50, few Good 2-3 48.00-52.00; Good and Choice 1190-1750 lb. Holsteins 43.25-47.00, few Choice 47.00-50.00.

SLAUGHTER HEIFERS: Choice 2-3, 1000-1100 lb. 52.75-53.60;

Good 2-3 950-1100 lb. 47.00-51.25.

COWS: Breaking Utility & Commercial 2-4 35.00-38.50, couple 38.75-40.00, few mostly 4 33.00-35.75; Cutter and Boning Utility 1-3 34.25-37.25, few 37.50-39.75; Canner and low Cutter 32.00-34.50, few 30.00-32.00.

BULLOCKS: Choice 2-3 1050-1435 lb. 50.00-52.25; Good 1-2 1000-1325 lb. 45.50-48.50.

BULLS: Yield grade 1 1350-1900 lb. 48.00-50.25, couple 53.00; yield grade 2 1000-1550 lb. 44.50-48.00, few 950-1050 lb. 42.75-45.00.

VEAL CALVES: 802. Vealers mostly steady; slaughter calves steady. Demand fair for Holstein bulls to return to farm.

VEALERS: High Choice and Prime 205-320 lb. 91.00-98.00; Choice 160-320 lb. 73.00-85.00, few 85.00-89.00; high Good and low Choice 140-320 lb. 58.00-73.00, 120-140 lb. 45.00-55.00, 80-110 lb. 38.00-45.00, few 65-80 lb. 22.00-38.00.

SLAUGHTER CALVES: Good and Choice 320-450 lb. 40.00-50.00, few Choice 50.00-59.00.

RETURNED TO FARM: Bulk 95-130 lb. Holstein bulls 65.00-90.00, few 90.00-100.00; several small frame 90-110 lb. 45.00-60.00.

SHEEP: 182. Spring lambs 2.00-3.00 higher; slaughter ewes steady.

SPRING LAMBS: Choice and Prime 70-110 lb. 70.00-76.00, few 60-65 lb. 77.00-82.00, couple 35-50 lb. 88.00-90.00; Good 55-90 lb. 60.00-69.00.

SLAUGHTER EWES: Utility and Good 15.00-32.00.

GOATS: 82. All goats sold by the head, Large mature 50.00-65.00, five head 75.00-84.00, Medium 33.00-45.00, Small 17.00-29.00.

### Weekly New York Egg Market Northeast Quotes

From Friday, July 11 to Wednesday, July 17

	Fri.	Mon.	Tues.	Wed.	Thurs.
<b>WHITE</b>					
Jumbo	.84	.84	.86	.88	.90
Ex. Large	.75	.75	.77	.79	.81
Large	.72	.72	.73	.74	.77
Medium	.52	.52	.53	.54	.55
Pullets	.41	.41	.41	.41	.41
Off Grade	.58	.58	.60	.62	.63
<b>BROWN</b>					
Ex. Large	.83	.83	.85	.87	.89
Large	.80	.80	.82	.84	.86
Mediums	.57	.57	.58	.59	.61
<b>OFF GRADE</b>					
Undergrades	.33	.33	.33	.33	.33
Checks	.31	.31	.31	.31	.31

Breaking Stocks

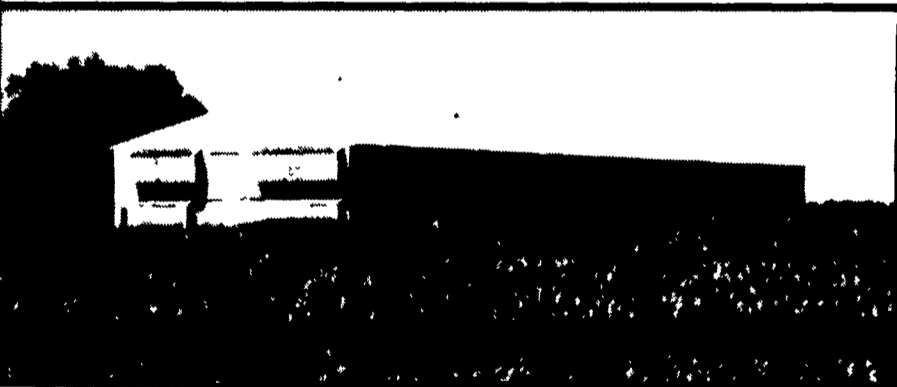
48.50 lbs. Fri.- 39.00-40.00; Thurs.- 39.00-41.00.

## BROILER BUILDING & EQUIPMENT DESIGN

"Experience Makes The Difference"



Our business was founded on designing & building broiler units for over 20 years. From the footers to the fans we can complete a broiler unit designed to be efficient & economical.



If you are considering a new broiler unit or remodeling your present unit, contact us.

"Let Our Experience Work For You."



REYNOLDS  
ROOFING & SIDING

Serving The Agricultural Industry For Over 20 Years



Designers & Builders

RD 4, EPHRATA, PA 17522

(Located In Farmersville)

PHONE (717) 354-4271



Cattle, Hogs and Poultry

RD 4, East Farmersville Rd., Ephrata, PA 17522

(Located In Farmersville)

(717) 354-6520