

St. Louis Cattle

Thursday, July 17

Report supplied by USDA

Receipts This Week 2,600
Week Ago 2,700
Year Ago 2,500

Compared to last week's close, slaughter steers 1.50-2.00 lower. Slaughter heifers 1.00-1.50 lower. Cows steady. Bulls weak to 1.00 lower. Slaughter supply mainly choice and mixed choice and prime slaughter steers and heifers, around 15% cows.

SLAUGHTER STEERS: Mixed choice and prime 2-4 1075-1325 lbs. 56.50-57.00, load 57.50. Couple packages 4-5 1450-1475 lbs. 45.50 and 49.75. Package 5's 1600 lbs. 43.75. Choice 2-4 950-1350 lbs. 55.50-57.00, mostly 55.00-56.50. Mixed good and choice 2-3 900-1250 lbs. 54.00-56.00. Good 2-3 900-1200 lbs. 52.00-54.00. Mostly good 2-3 1050-1500 lb. holsteins 42.00-46.00. Couple loads mixed good and choice 2-3 47.00.

SLAUGHTER HEIFERS: Mixed choice and prime 2-4 900-1150 lbs. 55.00-55.50, load 2-3 1100 lbs. 56.00. Choice 2-4 825-1100 lbs. 54.00-55.00. Mixed good and choice 2-3 800-1050 lbs. 52.50-54.00. Good 2-3 750-1000 lbs. 49.00-52.50.

COWS: (Closing Week Sales) breaking utility and commercial 2-4 35.00-38.00. Cutter and boning utility 1-2 37.00-38.00. High-yielding cutter and boning utility 1-2 38.00-

39.00. Canner and low cutter 1-2 34.00-37.00. Shelly canner 1-2 30.00-34.00.

BULLS: YG 1-2 1050-2000 lbs. 45.00-49.00. Few YG 1 50.00.

Wednesday's weekly sheep auction. Receipts around 550 head. Slaughter lambs 2.00-3.00 lower. Slaughter ewes steady. Feeder lambs steady to 1.00 lower. Receipts included 178 head string of western white-faced, smooth mouth ewes. Quality improved. Good demand.

SLAUGHTER LAMBS: Choice and prime shorn with No. 1-2 pelts 98-115 lbs. 66.50-70.00. Woolled lambs 64.00-67.50.

SLAUGHTER EWES: Cull to low utility 17.00-22.50. Few utility 25.00 few utility 25.00. String of Western 19.50.

FEEDER LAMBS: Choice and fancy 60-95 lbs. 59.00-64.00.

FEEDERS: Receipts around 500 head. Feeder steers and heifers steady. Supply mainly medium and large frame 1 and 2 400-700 lb. steers and heifers. Quality well below previous week's level.

FEEDER STEERS: limited supply medium and large frame 1: 300-500 lbs. 61.00-65.00; 500-700 lbs. 56.00-61.00; 700-950 lbs. 53.00-57.50. Fleshy 700-1000 lbs. 52.50-55.00. Medium and Large Frame 1-2: 400-700 lbs. 53.00-61.00. Large Frame 2 Holsteins 300-700 lbs. 43.00-48.00.

FEEDER HEIFERS: Limited

supply Medium and Large frame 1: 300-700 lbs. 51.00-57.00. Medium and Large frame 1-2: 400-700 lbs. 46.00-50.00.

Omaha Weekly

Thursday, July 17

Report supplied by USDA

Slaughter Steer and Heifers prices closed steady to .50 higher after posting declines early in the week. Good demand was the primary factor for the advance as a few packers came into the week in a 'short-bought' situation. Carcass beef prices steady at last week's declines. Slaughter Cows

1.00-2.00 lower, Slaughter Bulls 1.00 lower.

Estimated 5 day receipts this week 4,500 compared to actuals last week of 6,039 and 9,114 last year. Slaughter Steers accounted for 48 percent of receipts. Slaughter Heifers 38 percent, Slaughter Cows 10 percent and Feeder Cattle 2 percent.

SLAUGHTER STEERS: Closing sales Choice 2-4 1100-1300 lbs. 58.00-59.50. Mixed Good and Choice 2-3 1050-1150 lbs. 56.50-58.00.

SLAUGHTER HEIFERS: Choice 2-4 950-1150 lbs. 57.00-58.25. Mixed Good and Choice 2-3 925-1050

lbs. 54.00-57.00.

Average of LS 214 detailed price quotations for Choice 900-1100 lb. Steers this week 57.25, 1100-1300 lbs. 58.58. Average cost of all Slaughter Steers this week 56.39, average weight 1152 lbs. compared to 57.48 and 1167 lbs. last week. Average cost all Slaughter Heifers this week 56.01, average weight 1027 lbs. compared 57.09 and 1016 lbs. last week.

SLAUGHTER COWS: Breaking Utility and Commercial 2-4 34.00-38.00. Cutter and boning Utility 1-3 35.50-39.00, high dressing to 40.50. Canner and low cutter 31.00-36.50.



C.B. HOOPER & SON INC.
INTERCOURSE, PA
(717) 768-8231

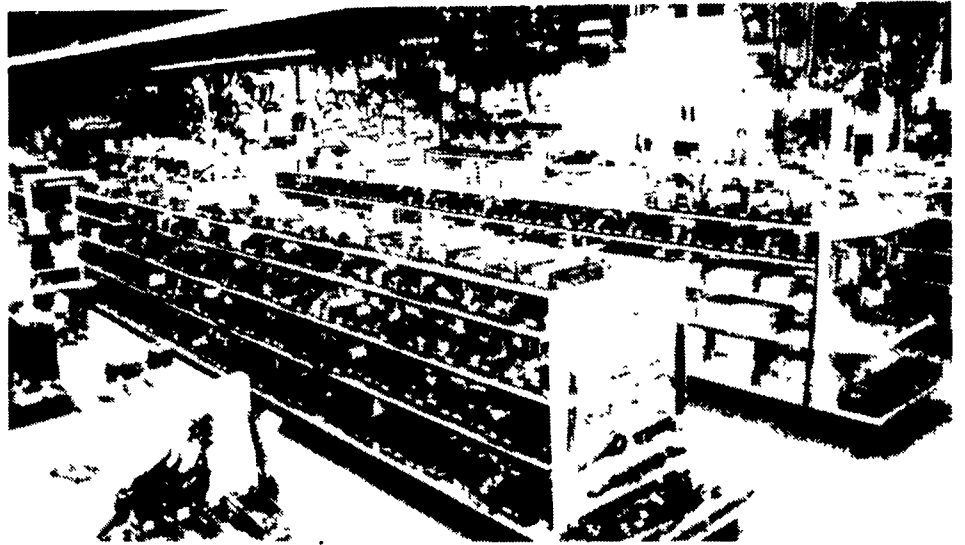
The Saving Place



HOOPER EQUIPMENT INC.
MIDDLETOWN, DE
(302) 378-9555

WE SHIP PARTS DAILY

Via UPS - PPSH - BUS - AIR FREIGHT, ETC.



CALL US...
It Could Be We Have It

Case
Authorized UPS Station

ATTENTION TOBACCO FARMERS!!!

Due to current dry conditions, more frequent spraying will be required for good control of aphids & hornworm. Applications of pesticides are also more effective when applied in the morning hours.

I have just returned from a trip into South VA and N. Carolina to meet with several buyers. Farmers in this flue-cured area are experiencing a severe drought.

Burley tobacco farmers had 50% less plants than normal in their seedbeds. Burley quotas were also cut by 6%.

These factors will certainly create an interesting supply/demand situation for our tobacco leaf; however, I will stress that quality will become very important in marketing out tobacco for years to come.

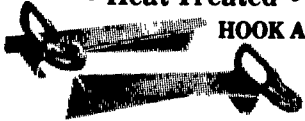
ERIC R. PROBST

**Special Chain Offer
Extended Thru July**



Heavy Duty REPLACEMENT CHAIN

- Heat Treated • All Chain Has 10 Yr. Warranty



HOOK AND EYE



FORAGE LINKS

This Chain Will Replace Most Brands Of Chain

HUSKY LIQUID MANURE EQUIPMENT

Replace Your MANURE TANK



Trailer-Mount

Truck-Mount
or
Trailer-Mount

Tank Sizes (Gal.) Available:
• 1200 • 2400 • 3600
• 1800 • 3000 • 5000

Husky-A Fine Line Of Good Equipment

24 Hrs. - 7 Days A Week - Refrigeration Service
Installation, Sales And Service

RAY SHENK
(Formerly Shenk's Farm Service)

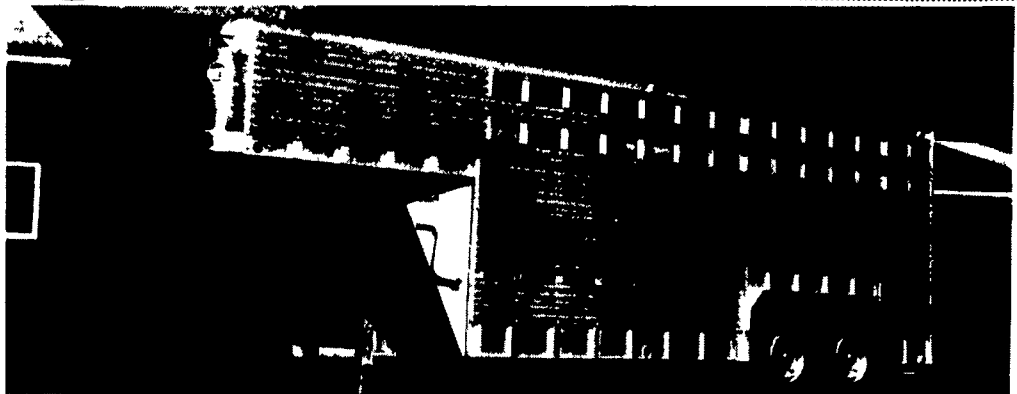
505 E. Woods Drive

Lititz, PA 17543

(717) 626-1151



ALUMINUM GOOSENECK TRAILERS



ATTENTION FARMERS & LIVESTOCK HAULERS:

ALUMINUM EBY GOOSENECK TRAILERS, Standard Specifications:

LENGTHS AVAILABLE: 14' to 28' (longer lengths available as option)
WIDTHS: 96" Standard - 102" Optional
HEIGHT: 6'6" Standard - 7'6" Optional

A versatile, lightweight, Eby aluminum stock trailer is built to provide years of maintenance free service. An Eby trailer is custom built to fit your individual hauling needs - No mass production! We use only quality components and strong alloy aluminum to manufacture what may be the last trailer you'll ever buy.

CONSIDER THE FEATURES OF AN EBY ALL-ALUMINUM TRAILER

LIGHTWEIGHT
Eby stock trailers are 25-35% lighter than comparable steel trailers. Less weight means better fuel mileage or increased payload.

MAINTENANCE
Eby aluminum trailers won't rust. Welding and painting can cost you dollars in down time and repairs.

DURABILITY
Eby trailers are built tough. Quality components of 6061 alloy aluminum provide the ruggedness required in a livestock trailer.

For more information on the economical choice in livestock trailers, contact:



M.H. EBY, INC.

P.O. Box 127 Blue Ball, PA 17506

717/354-4971