

MAILBOX MARKET FOR SALE

Oliver 770, gas, live PTO, PS, remote cylinders, NF, 3 pt.; 3B plow, disk. Montgomery Co. 215-754-7366.

Kawasaki 1982 KD80 dirt bike, used very little, \$275. Balto. Co., MD. 301-343-0026.

Hyd. pumps, hyd. motors, hyd. cylinders, gear reducers, coal and wood stoves, cultivators for Farmall A. York Co. 717-927-6967.

Registered Polled Herefords. Bulls, cows w/calves, heifers. Center point pastures, Worcester Montgomery Co., PA. 215-584-4495.

Registered Suffolk ram lamb born Jan. '86. Good size and ready to go. Montour Co. 717-437-3386.

Appaloosa 14.2H 8 yr. old gelding. English or Western. Used as lesson pony, 100% sound and quiet. Chester Co. 215-948-6109.

Cab-over camper for 8' pickup truck, electric, stove, cooler, jacks included. Good Condition. Lanc. Co. 717-898-0037.

Polled Hereford heifers to breed this fall, registered, growthy, good conformation, halter broken. Call Deitschland Farm, Womelsdorf, Berks Co. 215-589-5617.

Barn vent fan 36" diam 1/2 HP motor, outside dimensions 3 1/2 x 3 1/2, \$125. Dauphin Co 717-367-4221.

IHC 1R PTO potato digger on rubber Franklin Co. PA. 717-597-2787

Reg. & Grade holstein heifers due July-Oct. A-I sired by Bell, Tony, Matador & Milestone. Lanc. Co. 717-687-7475.

Registered star nubian buck from cert. Br. & TB free herd. Has improved production legs and udders, \$250. York Co. 717-637-9375.

Ground driven 1R potato digger, very good condition, \$600. Quarryville, Lanc. Co. 717-548-2286.

Hereford Simmental herd 18 cows, bull, 12 calves. Buy one or all Bucks Co. 215-294-9548.

Rye seed, cleaned, \$4.50 bu. in July. Master water softner, \$50; 14" car rims, \$1. Lanc. Co. 717-687-6321.

Head rebuilding, gas & dsl. engine rebuilding, cast iron welding. Spring Garden Repair, RD 1, Box 204, Kinzer, PA 17535

Zero bulk tank w/automatic wash, dump station 3HP compressor, 4 Surge milkers, 2 fifty LB buckets. Lanc. Co. 717-949-2536

Lickity log splitter, 2 stages pump heavy duty, \$1,200; Cornell splitter, 1 yr old, \$1,100. Northampton Co. 215-588-1350.

Ford 1981 porcelain 14' enclosed body, rollup door, new paint, runs excellent, automatic, 80,000 mis., \$4,500. Morris Co., NJ. 201-697-6626.

IH 800 planter, 4R w/fert., insect., \$3,900 or Make Offer. 8' insulated truck cap, \$275. Lanc. Co. 717-786-1458.

Paint Horse, 9 yrs. old. 14.2 hands. Almost anyone can ride this horse. Lanc. Co., 717-733-7947 or 717-627-1210.

2 Suffolk Rams, \$60. each. Heavy duty rotary mower, 3 pt., \$350. Berks Co. 215-582-3066

Cleaned rye seed. 717-949-6834. Lebanon Co.

Wisconsin VF engine with starter or will trade. Lanc. Co. 717-656-9734

8'x40' Mobile home, needs a little cleaning & minor repair, \$800 Berks Co. 215-689-9181

Doylestown #4 Threshing Machine, good condition, (shedded), \$250 Trade for 2 horse sulky plow and corn planter 215-681-4431

Merhow 2 horse van for pickup truck. Columbia Co. \$250. 717-683-5196.

Winpower PTO alternator model 45/25 on trailer, \$1,900; parts from 14' Gehl self unloading box. Col. Co. 717-458-5959.

Creekside family dairy farm. Best Offer over \$600. Monthly Christian family preferred. Available Sept. Cows also avail. Leb. Co. 717-866-7056.

Herf. cow w/bull calf & rebred; herf. cow w/heifer calf; W-F black heifer a mo.; herf heifer, 4 mo old. '65 Dodge dump York. 717-244-0624.

4 yr. old reg standardbred mare, traffic safe and sound, good road horse. Melvin J. Fisher, P.O. Box 57, Bart, PA 17503.

Farmall Cub w/cultivators; Farmall M. New 6 ton wagon gear; IH manure spreader, side dressers for IH. Salem Co. 609-358-8625.

JD 3 bottom, 16", 3 pt., late model 810A plow, complete w/jointers, good cond., \$375 York Co 717-266-1221.

Hobart meat grinder, \$450; Hobart band saw, \$1,000, reg. Simmental cow, \$550, Doeblers seed corn. Berks Co 717-933-8719

Heavy duty front guard grill for Ford 8N thru 2,000 series. Akron, Lanc. Co., PA. 717-859-3148.

JD 214 lawn tractor, exc. cond., 46" mower peck, w/hyd. lift, \$1,995. Lanc. Co. 717-354-0035 after 6 PM.

NH 270 baler w/thrower, AI, \$995; new thrower belts, '67 Dodge D-500 bucket truck, 49' reach, \$3,200. Lanc. Co. 215-484-4148.

Dunham 12' transport disc, used 30 acres. Cost, \$3,000. Sell, \$1,800. Carroll Co 301-262-9037 eyes.

Arabians: Mare w/foal, 4 yr. old filly, yearling colt and filly. Crabbet and Double R bloodlines. Chester Co. 215-932-5791.

Int. gas engine, patent 1917, 3 HP, mint cond., original cart, 90% original paint, \$700/OBO. R2, Barto. Berks Co. 215-845-2779

Oliver 525 combine, 11' grain head, hume reel, variable speed, drive, grain dividers, \$2,200/OBO. Field ready Berks Co., 215-367-7256.

Looking for a good horse? TB/Otr. 4, 14.3H gelding, bayh. Super on trails, English/Western, \$775. Lanc. Co. 717-665-7852.

Holstein bull, service age, records 26,170 milk, 4.3% fat. Stephen S. Fisher, 703 Hickory Hill, Lewisville Rd., Oxford, PA 19363.

Spinners, Cotswold/Dorset or Leicester/Dorset ram lambs. Colored Dorset/Corriedale ewe lambs All twins. Koch Farm, Pittstown, NJ. 201-788-3651.

1075 JD wagon gear, 12.5L-16-12 ply tires, cradle, bolsters, new. List \$2,500, sell \$1,600. Take smaller gear trade, private. Chester Co. 215-593-6238.

8x10 wood over head door, \$50; used grocery store carts, \$8; 7' variable speed pully; 10-1 gearbox, \$70. Lanc. Co. 215-445-4305.

Rebuilt big Stauffer air operated water pump, \$325. Elam M. Beiler, 51 Esbshade Rd., Ronks, PA 17572. Lanc. Co.

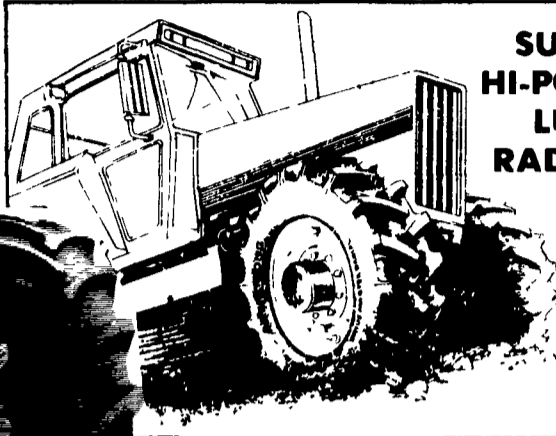
NI #10 manure spreader, \$275; JD 290 corn planter, \$175, 9 yr. old Tenn Walker, field trial horse, \$850. Chester Co 215-935-2928

Gravity bin wagon, 200 bu 6 ton running gear, \$1,200; Gehl 120 grinder mixer, good shape. Both pieces, \$2,500. 215-682-6257

ARMSTRONG WE GO THE EXTRA MILE

Over 15,000 TIRES IN STOCK

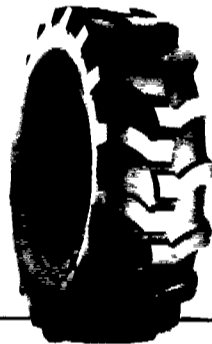
SPECIAL OFFER On ARMSTRONG RADIAL FARM TIRES



SUPER HI-POWER LUG RADIALS

14 9R28 10 Ply	\$325 00
16 9R28 10 Ply	\$399 00
18 4R34 6 Ply	\$399 00
16R38 6 Ply	\$429 00
18 4R38 6 Ply	\$459 00
18 4R38 8 Ply	\$529 00
18 4R26 10 Ply	\$449 00
20R34 8 Ply	\$639 00
20 8R38 8 Ply	\$649 00
20 8R38 10 Ply	\$699 00

Loader-Dozer



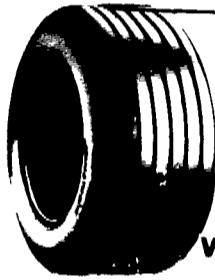
★ TUBELESS ★

16 9x24 8 ply	\$265 00
16 9x24 10 ply	\$330 00
17 5Lx24 6 ply	\$240 00
17 5x24 8 ply	\$270 00
15 5x25 12 ply	\$320 00
17 5x25 12 ply	\$445 00
19 5Lx24 10 Ply	\$359.00
18 5Lx24 12 Ply	\$359.00
21Lx24 12 Ply	\$465.00

★ TUBE TYPE ★

14 9x24 6 ply	\$200 00
14 9x24 8 ply	\$220 00
16 9x24 6 ply	\$220 00
16 9x24 8 ply	\$235 00
16 9x24 10 ply	\$280 00
17 5Lx24 8 ply	\$240 00
16 9x28 8 ply	\$260 00
18 4x28 10 ply	\$340 00
20 5x25 12 ply	Call For Quote
23 5x25 16 ply	Quote
1300x24 10 ply	\$225 00
1300x24 12 ply	\$245 00
1400x24 10 ply	\$255 00
1400x24 12 ply	\$280 00

We Have Lots Of **USED TIRES** In Stock!



WAGON TIRES

26 1200x12 4 ply	49 00
8 5Lx14 6 ply	41 00
9 5Lx14 6 ply	44 00
9 5Lx14 8 ply	49 50
11Lx14 6 ply	49 00
9 5Lx15 6 ply	42 00
9 5Lx15 8 ply	44 00
11Lx15 6 ply	43 00
11Lx15 8 ply	47 00
25x7 50x15 4 Ply Tubeless	44 00
25x7 50x15 6 Ply Tubeless	49 00
27x9 50x15 4 Ply Tubeless	53 00
27x9 50x15 6 Ply Tubeless	60 00
31x13 50x15 6 Ply Tubeless	65 00
31x13 50x15 8 Ply Tubeless	88 00
31x13 50x15 8 Ply Tubeless	99 00
11Lx15 8 ply tubeless	50 00
11Lx16 8 ply	58 00
11Lx16 10 ply tubeless	74 00
12 5Lx15 10 ply	75 00
12 5Lx16 14 ply	85 00
14Lx16 1 12 ply	140 00
16 5Lx16 1 10 ply tubeless	160 00

Deduct \$5.00 During July



Small Rear Farm

750x20 4 ply	59 95
750x24 4 ply	64 95
8 3x24 4 ply	79 00
9 5x24 4 ply	84 00
11 2x34 4 ply	135 00
11 2x36 4 ply	137 00
12 4x36 4 ply	175 00
13 6x36 4 ply	189 00



Skid Loader

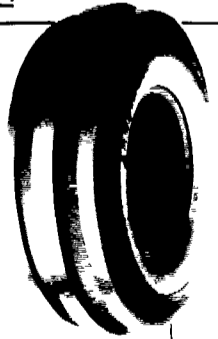
700x15 6 ply	\$65 00
750x15 6 ply	\$68 00
10 16 5 6 ply	\$80 00
17 16 5 8 ply	\$120 00
Steel Shield	
10 16 5 6 ply	\$95 00

Above Tires Shipped To You FREE

Contractor F-3

11Lx15 8 ply	\$80 00
11Lx16 8 ply	\$92 00
11Lx16 10 ply	\$98 00
750 800x16 10 ply	\$80 00
11Lx16 12 ply	\$130 00
145 75 16 10 ply	\$225 00

Front Tractor



400 12	\$22 00
400 15	\$24 00
500 15	\$31 00
550 16 4 ply	\$33 00
550 16 6 ply	\$36 00
600 16 4 ply	\$37 00
600 16 6 ply	\$41 00
650 16 6 ply	\$42 00
75L 15 6 ply	\$50 00
750 16 8 ply	\$54 00
750 16 6 ply	\$50 00
750 18 6 ply	\$64 00
9 5L 15 6 ply	\$55 00
9 5L 15 8 ply	\$60 00
1000 16 6 ply	\$80 00
11Lx15 8 ply	\$75 00
1100 16 8 ply	\$110 00
14L 16 1 8 ply	\$160 00

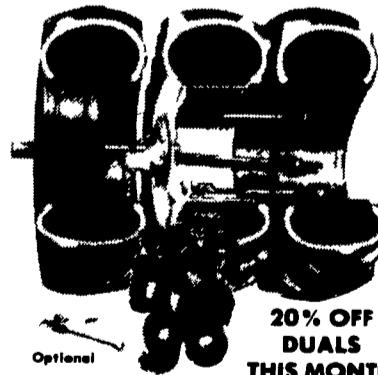
Above Shipped UPS - No Charge

Hi Power Lug



11 2x24 4 ply	100 00
14 9x24 4 ply	150 00
14 9x24 6 ply	165 00
14 9x24 8 ply	190 00
16 9x24 6 ply	190 00
16 9x24 8 ply	210 00
14 9x26 6 ply	172 00
18 4x26 6 ply	235 00
23 1x26 8 ply	525 00
23 1x26 10 ply	600 00
11 2x28 4 ply	115 00
12 4x28 4 ply	130 00
13 6x28 4 ply	145 00
13 6x28 6 ply	160 00
14 9x28 4 ply	160 00
14 9x28 6 ply	175 00
16 9x28 6 ply	220 00
16 9x28 8 ply	240 00
18 4x28 6 ply	275 00
16 9x30 6 ply	230 00
18 4x30 6 ply	270 00
23 1x30 8 ply	650 00
24 5x32 10 ply	750 00
16 9x34 6 ply	255 00
18 4x34 6 ply	299 00
18 4x34 8 ply	325 00
20 8x34 6 ply	459 00
20 8x34 8 ply	510 00
23 1x34 8 ply	689 00
11 2x38 4 ply	140 00
12 4x38 4 ply	168 00
13 6x38 4 ply	179 00
13 6x38 6 ply	198 00
14 9x38 6 ply	224 00
15 5x38 6 ply	225 00
16 9x38 6 ply	279 00
18 4x38 6 ply	325 00
18 4x38 8 ply	365 00
20 8x38 8 ply	500 00

the strongest, most reliable and easiest to install...



20% OFF DUALS THIS MONTH

M & W DUAL SUPER LOCK II

Tire	Price	Discount	You Pay	(12.5-Belts)
18 4x30	\$650	\$130	\$520	(12.5-Belts)
18 4x34	\$620	\$130	\$490	(12.5-Belts)
18 4x38	\$630	\$140	\$490	(12.5-Belts)
20 8x38	\$790	\$190	\$600	(16.5-Belts)
20 8x34	\$780	\$170	\$610	(16.5-Belts)

Above Duals Are The Strongest Clamp-On Dual Available Snap-On Also Available
* 10-Hole Dual Axle Available At 20% Discount Now
* All Duals Shipped To Your Farm Free During July

Ask About Our 4 Year Guarantee On Rear Tires Strongest In The Country

We Install Tires On Your Farm

- Centre Hall • Williamsport
- Sunbury • Allentown
- North Penna. • New Jersey
- Northern Maryland

Route 230 West

MUMMAU TIRE

Serving Farmers In Penna. New Jersey Northern Maryland and Delaware

Out Of State 717-653-1260 In Penna. 1-800-222-1729

Mt. Joy, PA