

Centre County 4-H Sheep Club

The Centre County 4-H Dairy Club met July 2 at the Grange Fair Grounds. Members trimmed their own sheep and received instruction on how to fit a lamb for show.

Lily Musser, exhibit committee chairman, reported on the club's exhibit which will have the theme "The True Story About Mary's Little Lamb." It will explain all the products that come from sheep. The exhibit will be used at the Grange Fair and the Pennsylvania Lamb and Wool Festival.

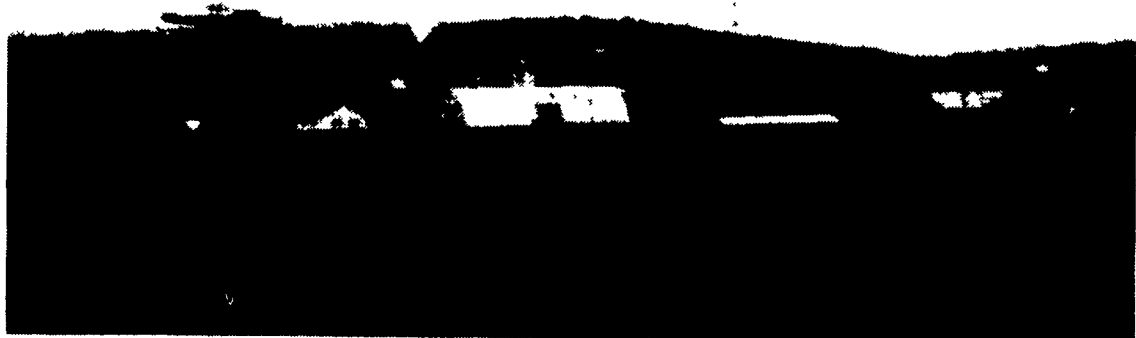
Mike Rider, chairman for the food stand at the Keystone Ram and Ewe Sale, gave a committee report on the event to be held July

11 and 12.

Tour committee chairman Joyce Harpster reported on a trip to Berks County planned for July 14 and 15. The club will visit various businesses related to the sheep industry and historical sites. Members will leave from the Hills Plaza at 6 a.m. Monday morning.

Club leader Shirley Harpster reported that the club has been asked to serve a banquet at the Tested Ram Sale Aug. 2 at Penn State. The club will serve lamb at the event.

The next meeting will be held Aug. 6 at 8 p.m. at Gary Rossman's home.



A group of about 100 farmers and agribusiness representatives joined the FMC summer plot tour and picnic at the New Holland Community Park on Wednesday. Steve F. Fisher is the local representative. The tour was assisted and co-sponsored by the Eastern Lancaster County Adult Farmer Program under the direction of Don Robinson, Vo Ag instructor.

The climax of the tour was the aerial application of granular Furadan on corn for the control of corn bore. In addition test plots for weed and insect control in tobacco, cantaloupes, watermelon and alfalfa were visited. The New Holland area farms included on the tour were Willis Fox Farm, Harry Burkholder Farm, Earl Weaver Farm and Delmar Weaver Farm. John D. Tallman from the Tallman Aerial Spraying Service flew the airplane.

5% LEASING RATES

GRAIN STORAGE

NATURAL GRAIN DRYING

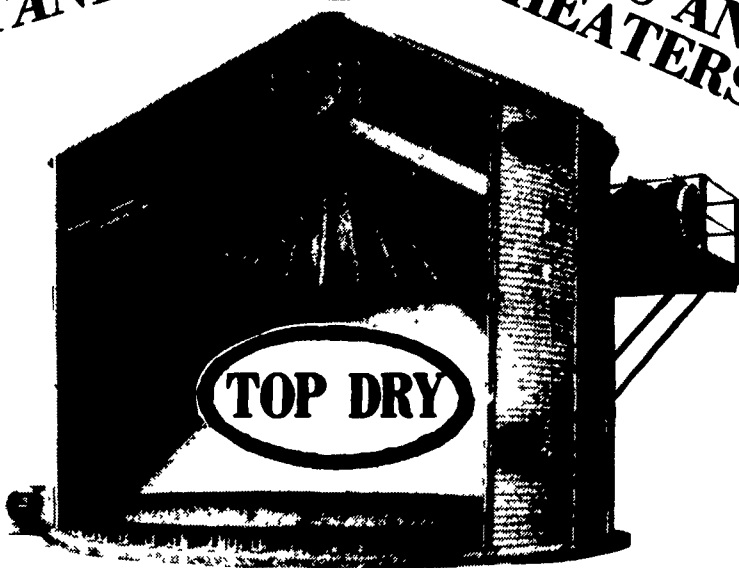
FLOORS

WET TANKS

FEED BINS

AUGERS

DRYING FANS AND HEATERS



CALL NOW



automatic farm systems

608 Evergreen Rd., Lebanon, PA 17042

(717) 274-5333

Check Our Low Prices Before You Buy

SAVE COWS, TIME & BEDDING

COW MATS

Use our unique method of installing a one piece mat under a row of cows. Prevents movement of mat and bedding from creeping underneath.

All "row" and single mats are cut from heavy one inch rubber belting.

SAVE 40%

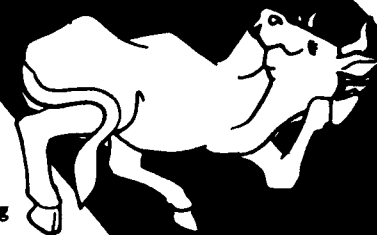
on New Replacement Belts For Farm Machines

• Bale Thrower Belts \$70.00

• Grove-Gehl-Int.-S.U. Wagon Box Belts \$120 to \$150

Also Available: Bean Picker Belts & Big Round Baler Belts

Flat belts shipped same day as order



Any flat belt can be custom made for your farm machinery (cleats installed). Belts shipped same day by UPS.

For more information, write:

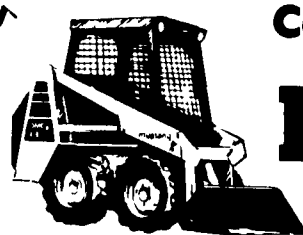
Bob Gabel

Rt. 16, Chaffee, New York 14030

CALL TOLL FREE: 1-800-537-3003

Phone Collect: 716-496-6025

HEY Y'ALL



Come On Over To Our

Mustang RODEO!

WANTED: The fastest skid-steer operator in the East.

DATE: SAT., JULY 26

TIME: 7:30 P.M. SIGN IN TIL 7:00 P.M.

PLACE: Plainfield Farmers Fair

\$100 REWARD FOR 1st PLACE FINISH

ENTRANCE FEE: \$5.00 REGISTER EARLY
FREE HAT TO FIRST TWENTY ENTRIES

SPONSORED BY

LEISER'S Rt. 191 Bethlehem

REGISTER BY CALLING
(215) 691-3070 - LEISER'S



REGISTRATION LIMITED - CALL EARLY